



# Philips Sonicare FlexCare Shaft Replacement

The shaft that connects to the brush head will be replaced.

Written By: Tasha Panattoni

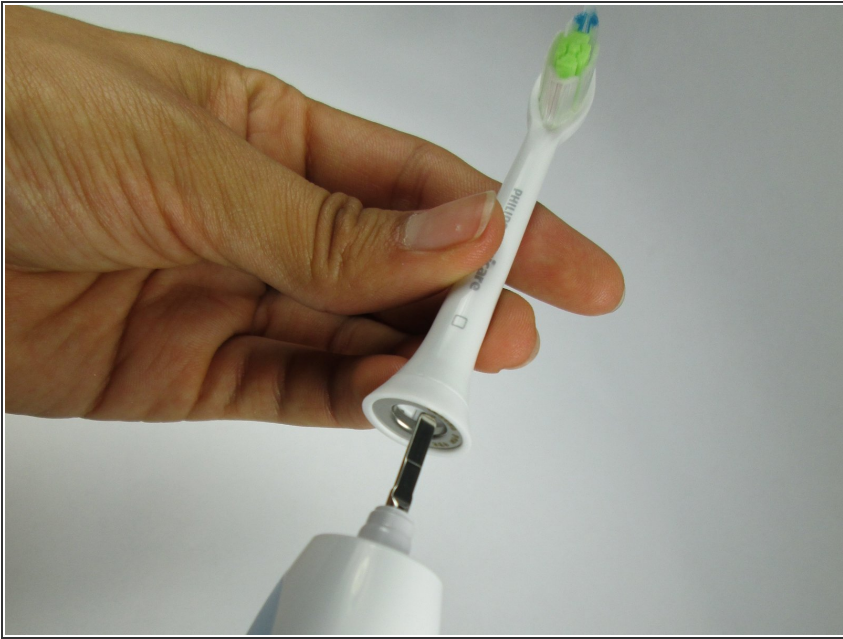




## TOOLS:

- [Metal Spudger](#) (1)
- [Phillips #00 Screwdriver](#) (1)
- [Metal Probe](#) (1)
- [Spudger](#) (1)

## Step 1 — Shaft



- Pull the brush head away from the handle to remove it.

## Step 2



- Push the flat edge of a metal or nylon spudger between the seal and the toothbrush body and pry it open. Do this all around the edge until the seal is partially sticking out.

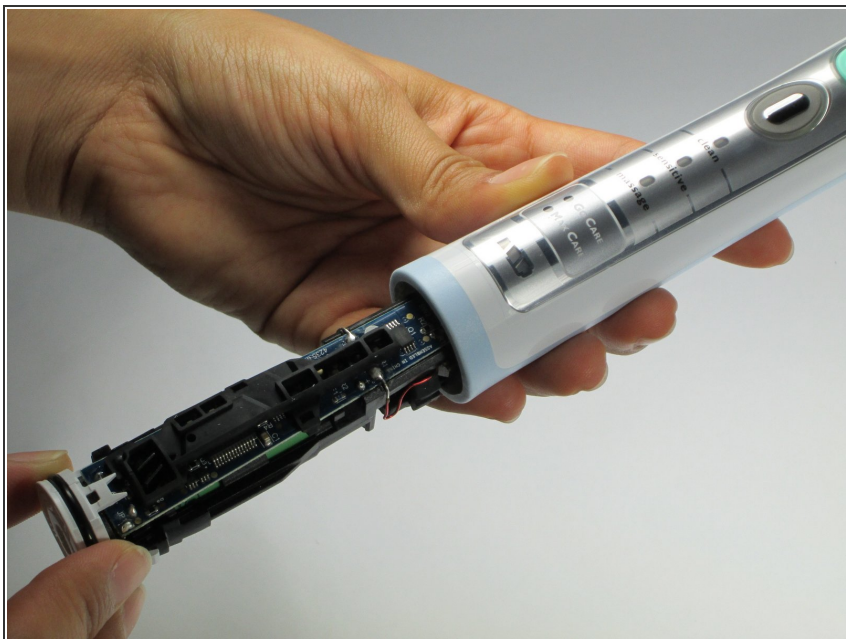
## Step 3



- Apply pressure to the shaft by pressing it against a firm and flat surface. Continue to apply pressure until the electronics located in the interior are exposed.

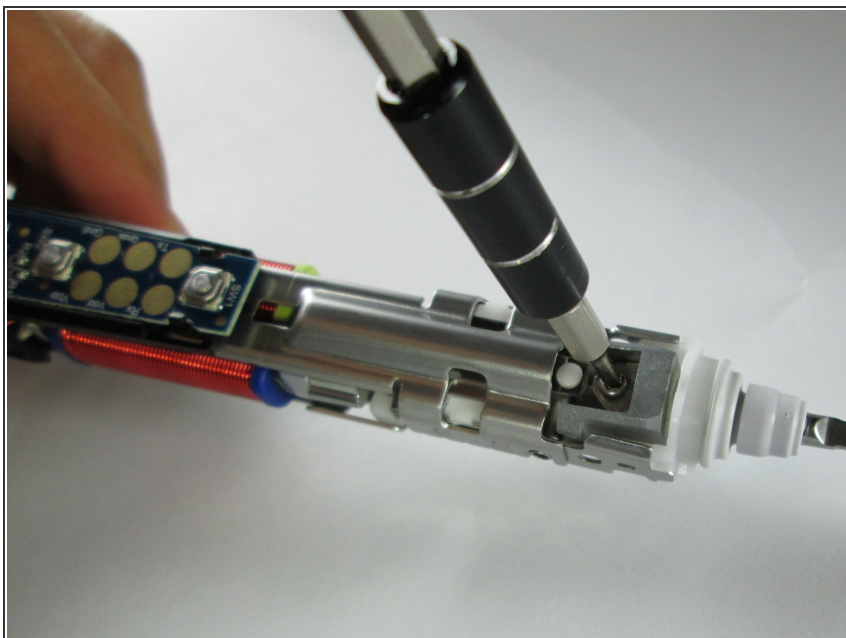


## Step 4



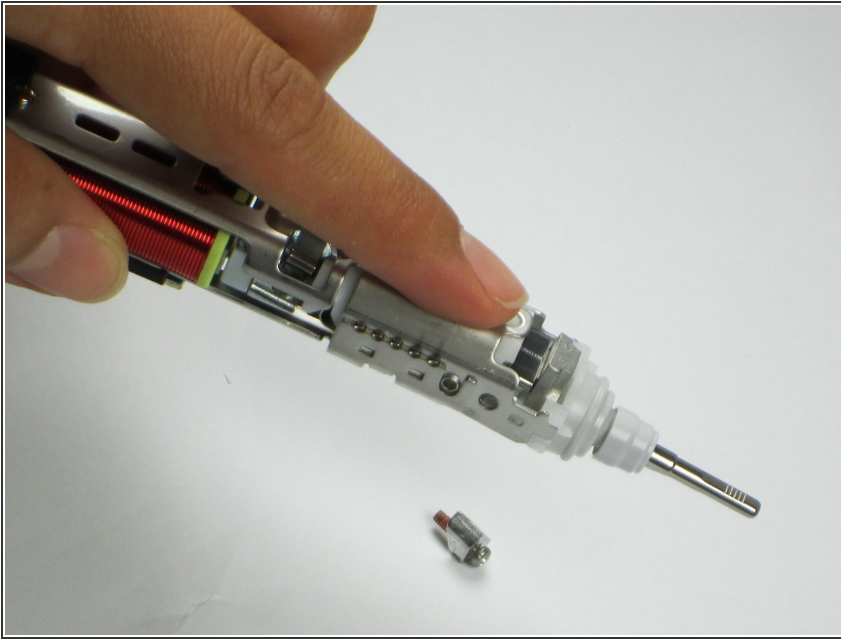
- Grab the circular, plastic base with the o-ring and pull it outward.

## Step 5



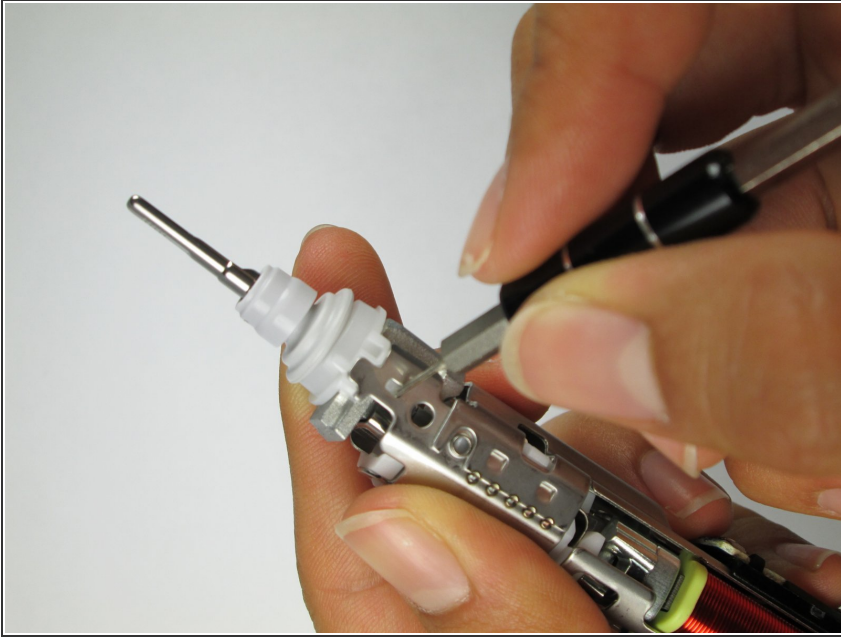
- Using a #00 phillips head screwdriver, loosen the screw completely.

## Step 6



- Rotate the interior of the toothbrush until the screw is facing downward. Slightly shake the interior so that the screw with its accompanying metal part fall out.
- Slightly shake the interior so that the screw falls out.
- ⓘ A small ring may fall out when the screw is removed. Be careful not to lose the ring.

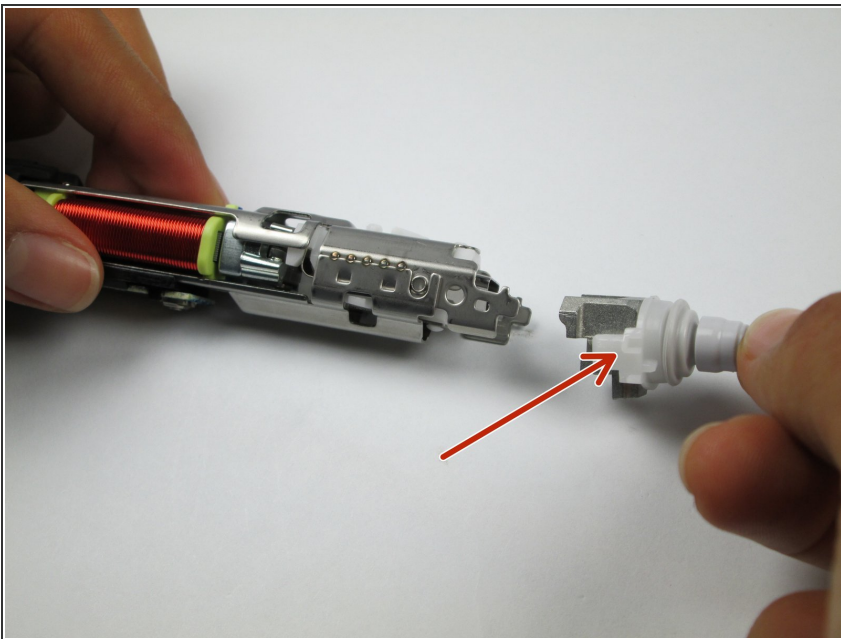
## Step 7



- Use a metal probe to press against the hole located at the edge of the interior. While applying this pressure, pull on the shaft outward. Repeat this step on the opposite side.

**i** A small nut may fall out when the shaft is removed. Be careful not to lose the nut.

## Step 8



- Once the shaft is released, separate it from the body of the interior.
- Insert the replacement shaft by aligning the components and applying a force to insert the legs (one of the legs is identified by the red arrow) of the shaft into the interior.

To reassemble your device, follow these instructions in reverse order.