



Philips Sonicare FlexCare Spring Replacement

This guide will help you replace the spring in the toothbrush.

Written By: Joanna Moraza





TOOLS:

- [Metal Spudger](#) (1)
 - [Spudger](#) (1)
-

Step 1 — Spring



- Pull the brush head away from the handle to remove it.

Step 2



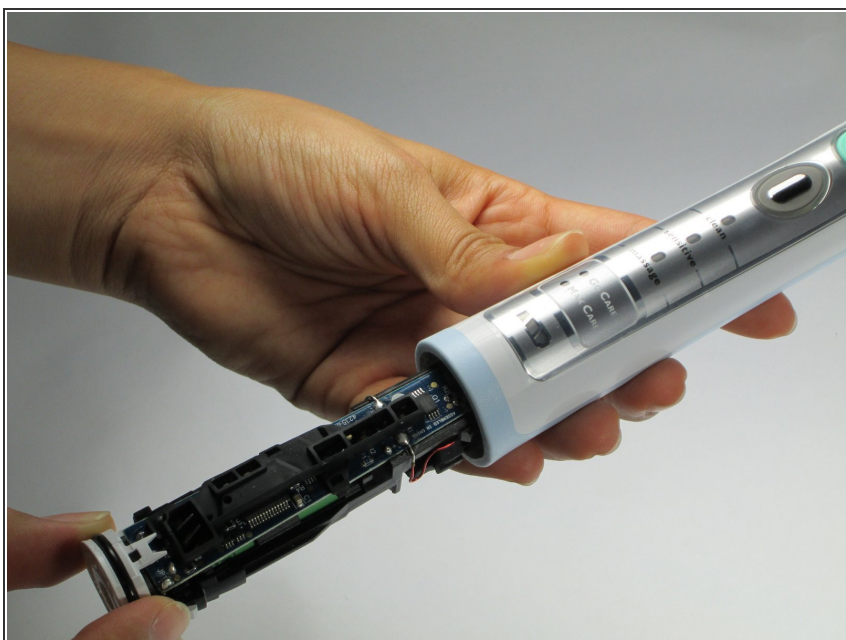
- Push the flat edge of a nylon or metal spudger between the seal and the toothbrush body and pry it up. Do this on each side until the seal is partially sticking out on all sides.

Step 3



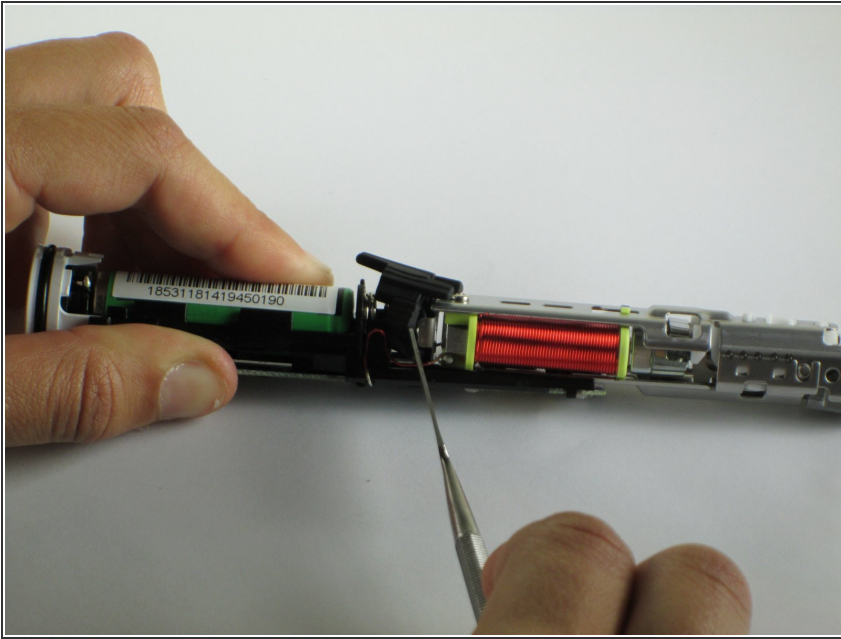
- Apply pressure to the shaft by pressing it against a firm and flat surface. Continue to apply pressure until the interior electronics are exposed.

Step 4



- Grab the circular, plastic base with the o-ring and pull it outward.

Step 5



- Pull off the black rubber ring with a metal or nylon spudger until it clears the metal piece that holds it in place. Pull the ring out.

Step 6



- Remove the spring from the rubber ring and replace it with the new spring.

To reassemble your device, follow these instructions in reverse order.