



# Philips Sonicare HX6710 Battery Replacement

Replacing the battery in the electric toothbrush Philips Sonicare HX6710

Written By: Michael S.





## TOOLS:

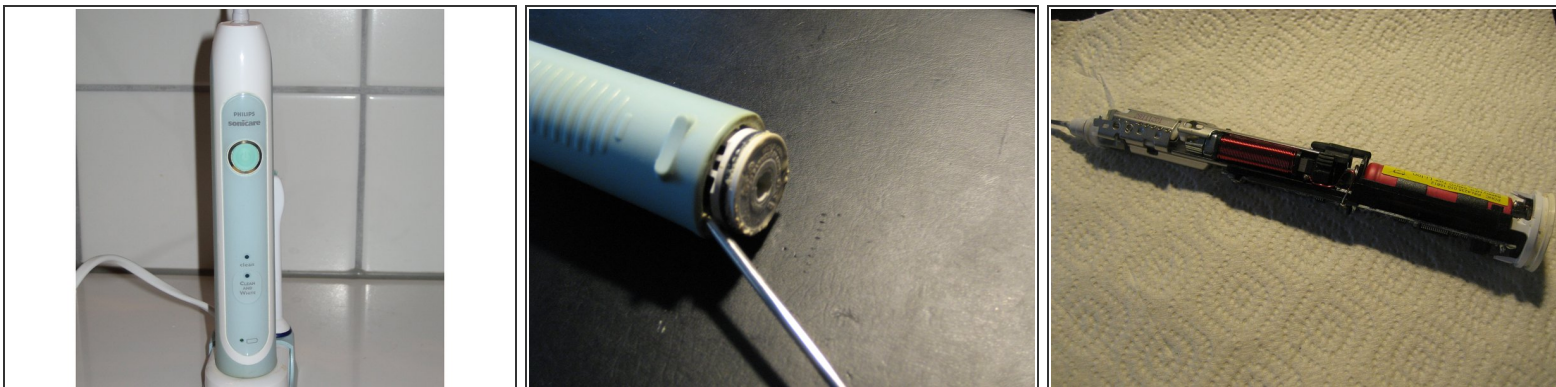
- [Portable Soldering Iron](#) (1)
- [Flathead Screwdriver](#) (1)



## PARTS:

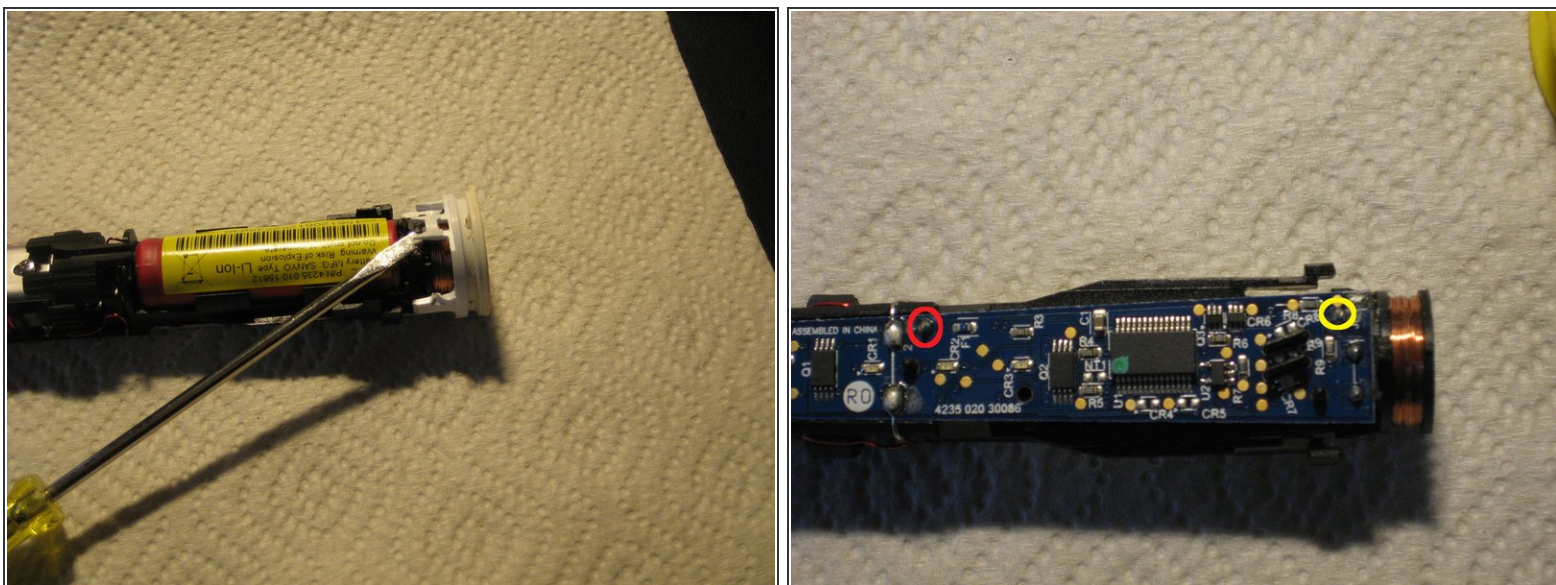
- [New Item](#) (1)

## Step 1 — Open housing



- Carefully pry the housing down with a thin, wide screwdriver

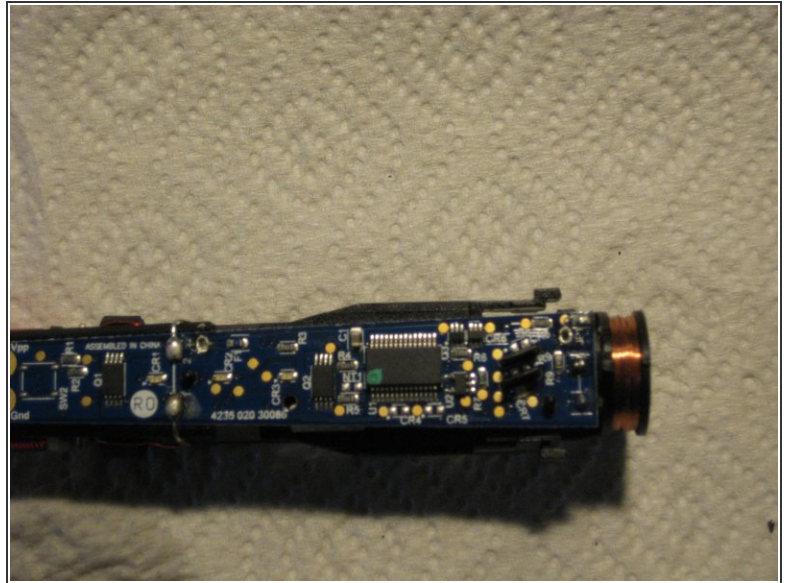
## Step 2 — Remove lower cap



- Remove lower cap (2 plastic tabs). O-ring is already removed in the picture.
- Solder connections of the battery: + (red) and - (yellow).

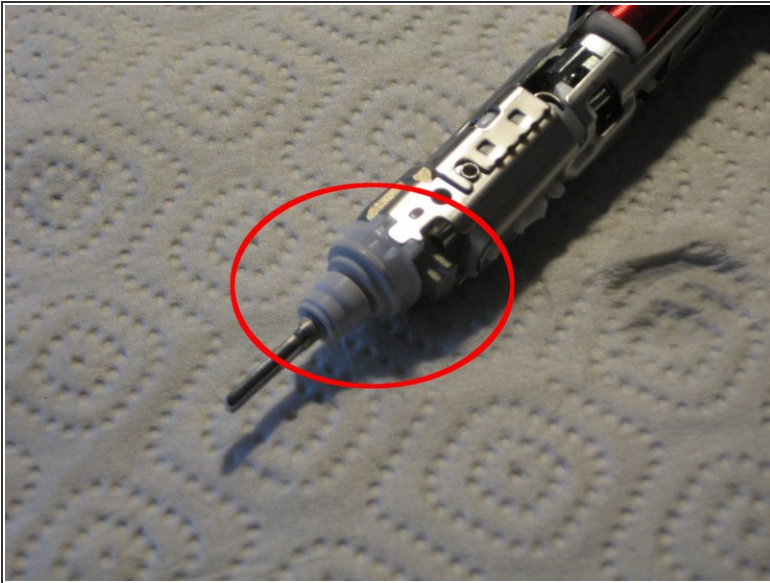


## Step 3 — Replace the battery



- Unwrap the battery and replace it (see Soldering Skills).
  - To avoid a short circuit (the battery will normally still have a remaining charge), start at the positive pole of the battery and unsolder completely from the board.
  - Continue with the negative pole.
  - At the end, loosen the soldering pads from remaining solder, so that the contacts of the new battery can be inserted into the board.
  - Solder plus and minus pole.
- Requires a 3.7V battery, which is approximately 14mm x 49mm (similar to AA).

## Step 4 — controls



- Before assembly, check the upper seal and the lower O-ring and replace if necessary.

Repeat the steps in order to reassemble your device.