



Philips TT2021 Bodygroomer Series 5000 On / Off Switch Replacement

The razor can not be switched off or switched on anymore?

Written By: bper



INTRODUCTION

Your Bodygroomer Series 5000 can not be turned on / off anymore?

Most likely it is due to the micro-button !!! This seems to be relatively inferior.

Before you start to swap the button as in my instructions, check whether the battery i.O. is.

The voltage should be at least 2.6V when charged. If this is not the case, the batteries are very likely to be defective and should be replaced.



TOOLS:

- [New Item](#) (1)
- [New Item](#) (1)
- [New Item](#) (1)



PARTS:

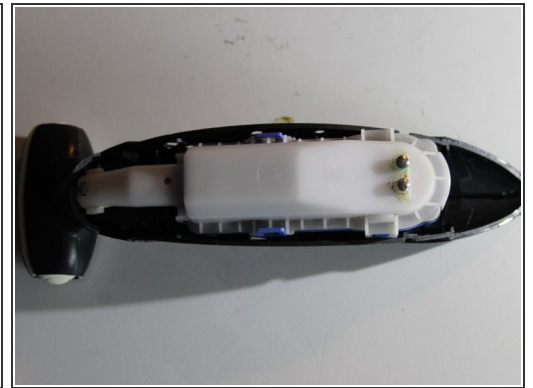
- [New Item](#) (1)

Step 1 — On / Off switch exchange



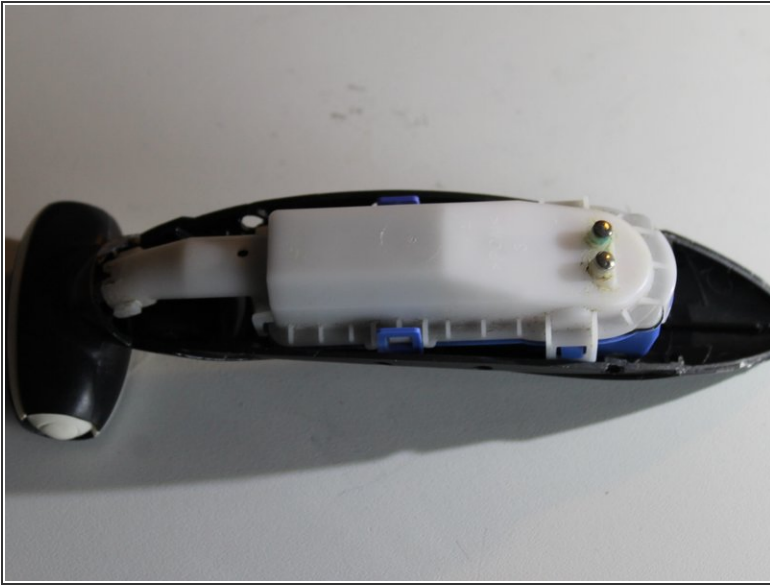
- First remove the white side parts with a thin slotted screwdriver (everything is just "clipped")

Step 2



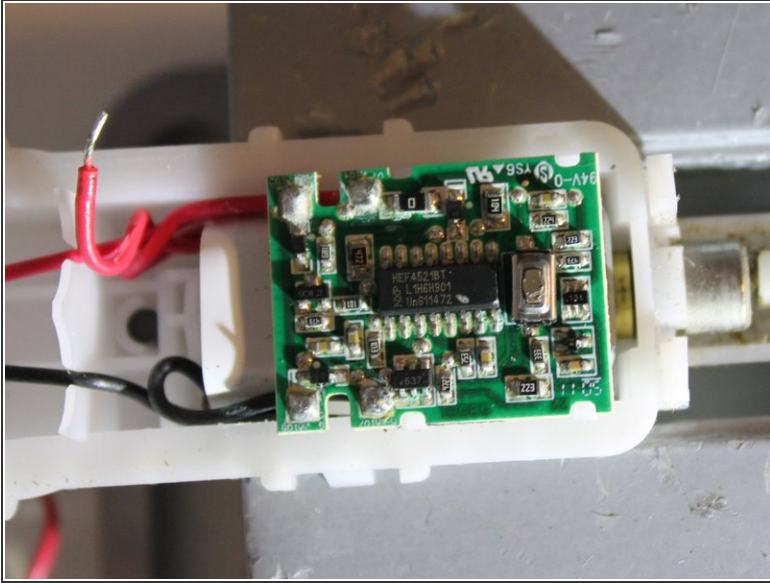
- Next, open the black plastic case (also like the white parts with a thin slotted screwdriver)

Step 3



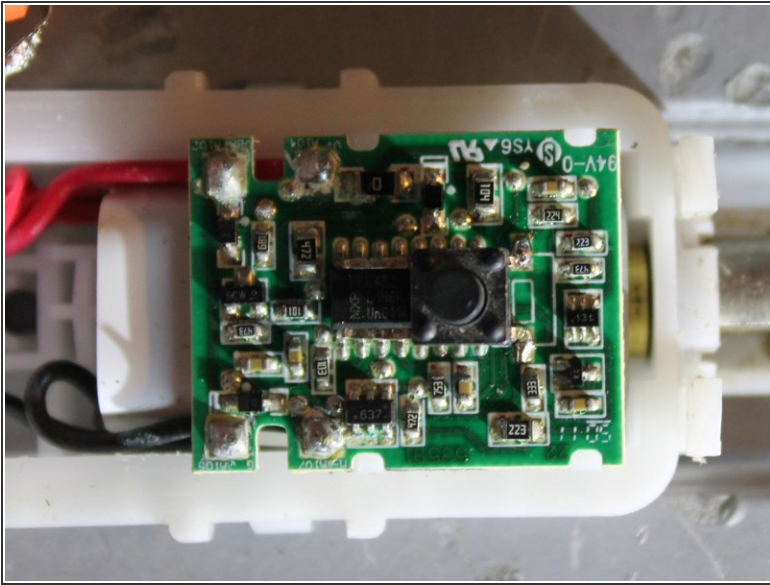
- The capsule has on the outside only 5/6 points where the upper and lower shell are connected.
- Next, the "waterproof capsule" must be removed and opened.

Step 4



- Now, when the capsule is open, you can already see the "culprit" (The small button to the right of the large IC chip)
- Now carefully desolder this button

Step 5



- Now solder in the new button
- The button should rest on the IC module so as not to slip / bend

Repeat the steps in order to reassemble your device.