



Phillips Iron Teardown

Written By: david Rees



INTRODUCTION

As part of our Uni course at UWE we have had to do a product teardown, so here is ours



TOOLS:

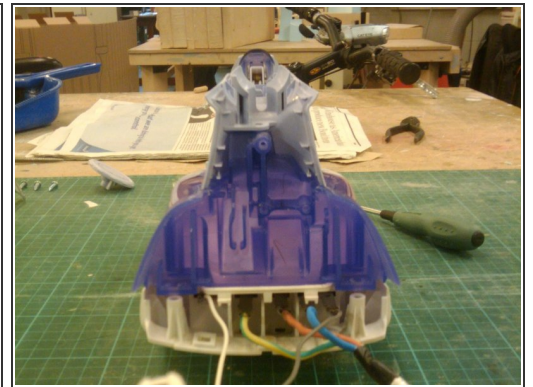
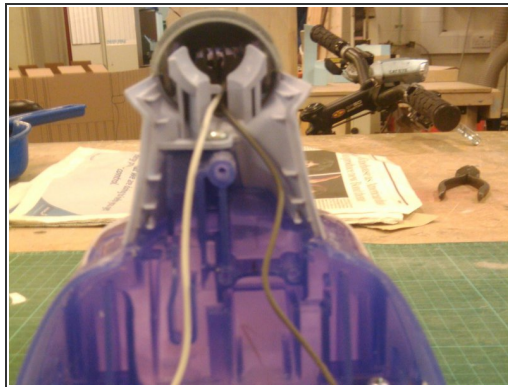
- [Phillips #0 Screwdriver](#) (1)
-

Step 1 — Phillips Iron Teardown



- Insert wisdom here.

Step 2



- Insert wisdom here.

Step 3



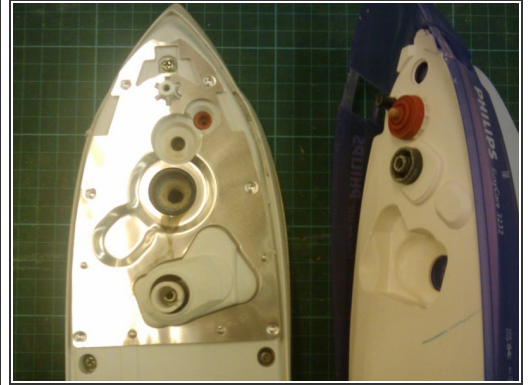
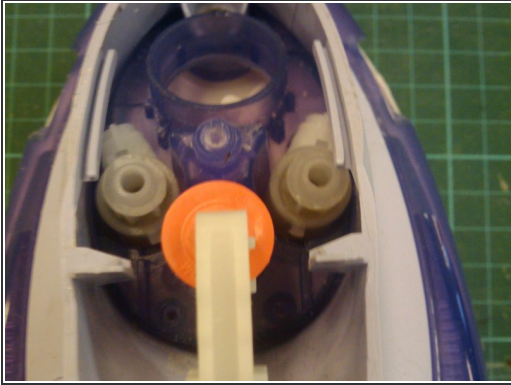
- Insert wisdom here.

Step 4



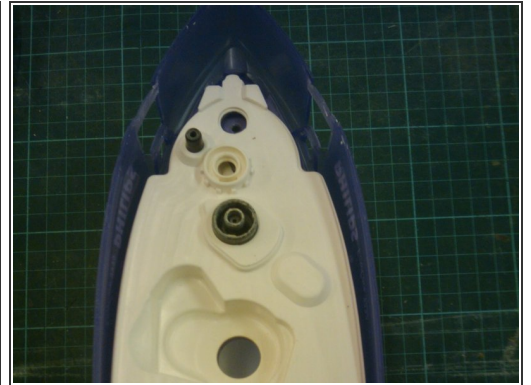
- Insert wisdom here.

Step 5



- Insert wisdom here.

Step 6



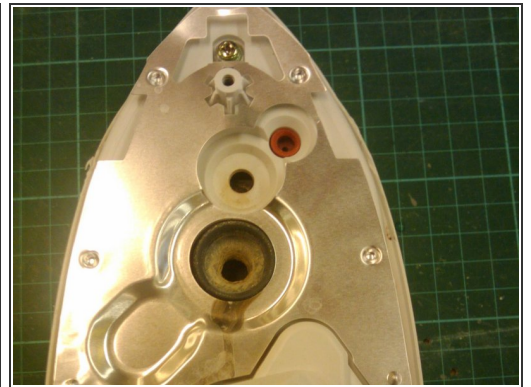
- Insert wisdom here.

Step 7



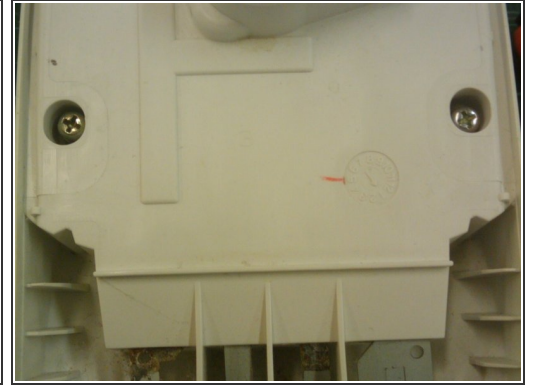
- Insert wisdom here.

Step 8



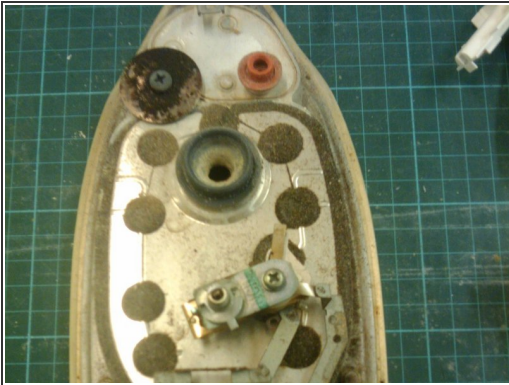
- Insert wisdom here.

Step 9



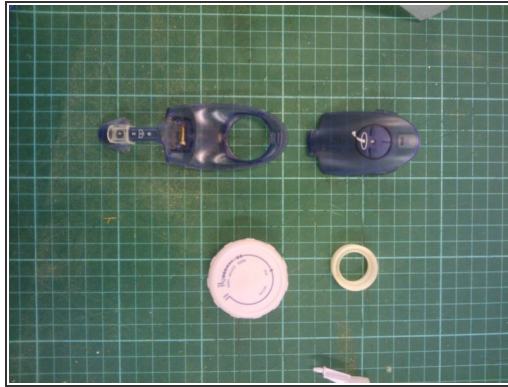
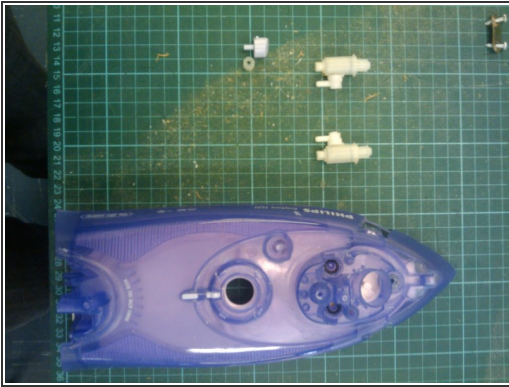
- Insert wisdom here.

Step 10



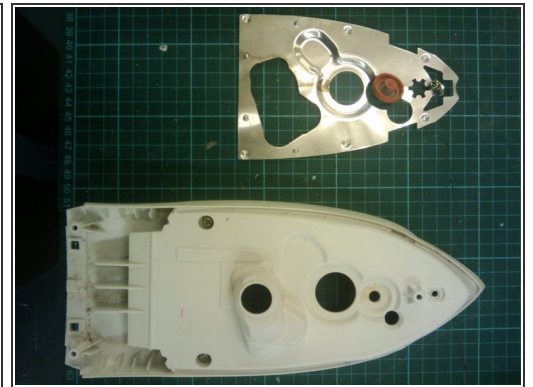
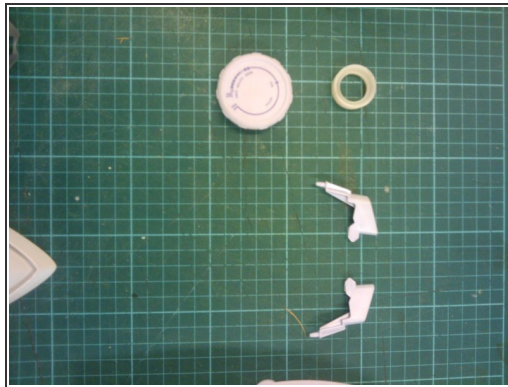
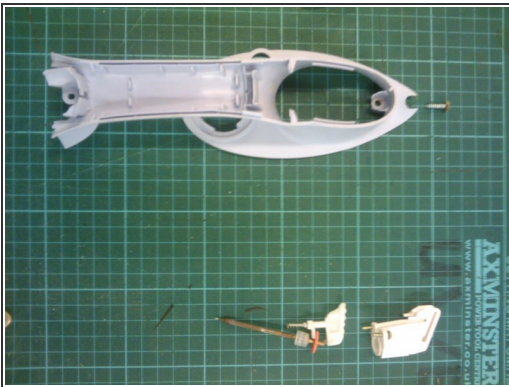
- Insert wisdom here.

Step 11



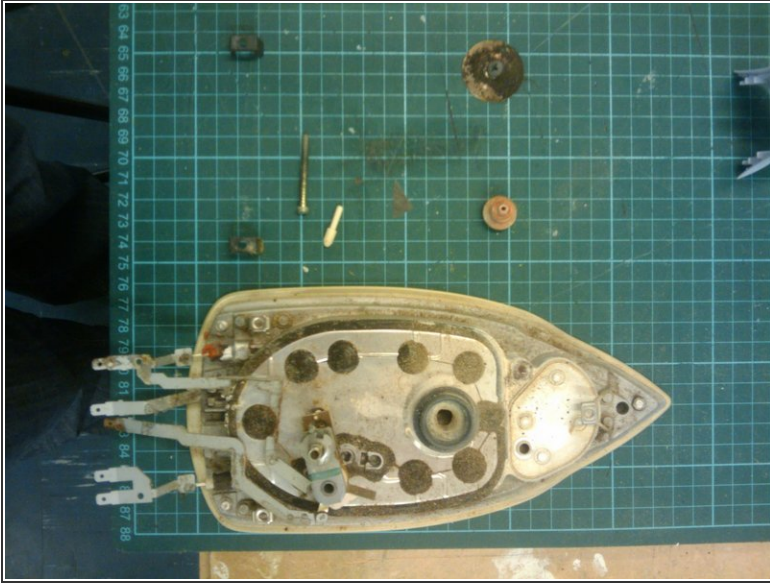
- Insert wisdom here.

Step 12



- Insert wisdom here.

Step 13



- Insert wisdom here.

To reassemble your device, follow these instructions in reverse order.