

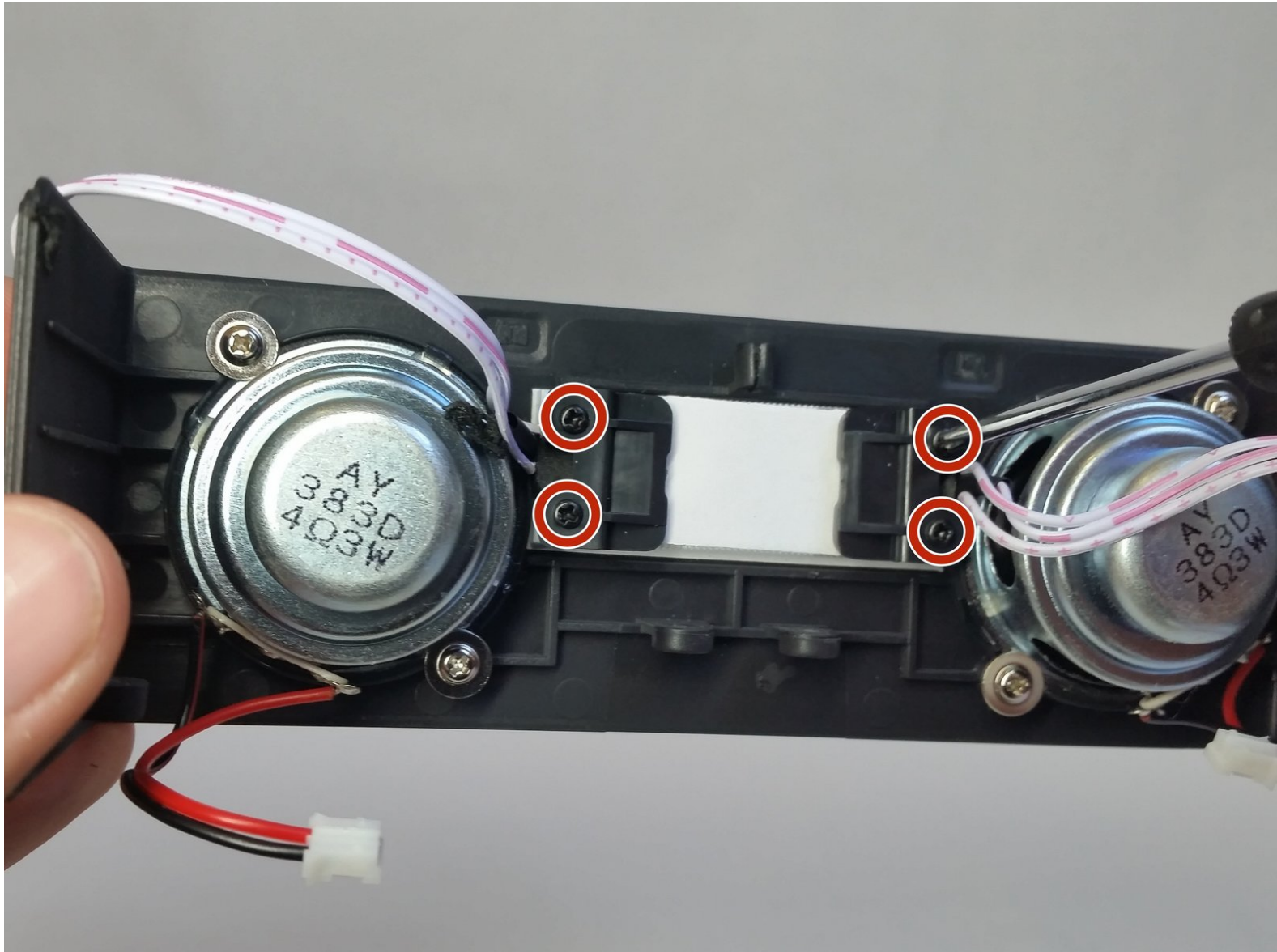


Photive Artisan Portable Bluetooth Speaker

Front Panel Light Replacement

Replace the front light for the Photive Artisan Portable Bluetooth Speaker.

Written By: David Lennon



INTRODUCTION


Use this guide to replace the front light in your speaker.

TOOLS:

- [Phillips #0 Screwdriver](#) (1)
-

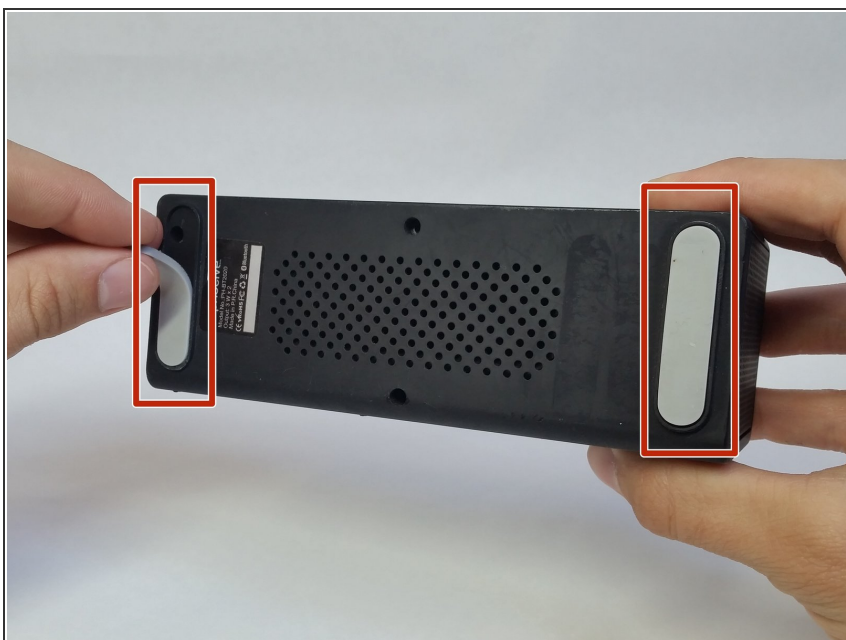
Step 1 — Front Panel



 Before continuing, be sure your device is powered off.

- Remove two 9mm Phillips #0 head screws from the bottom side of the speaker.

Step 2



- Peel back the rubber feet from either side of the base.

Step 3



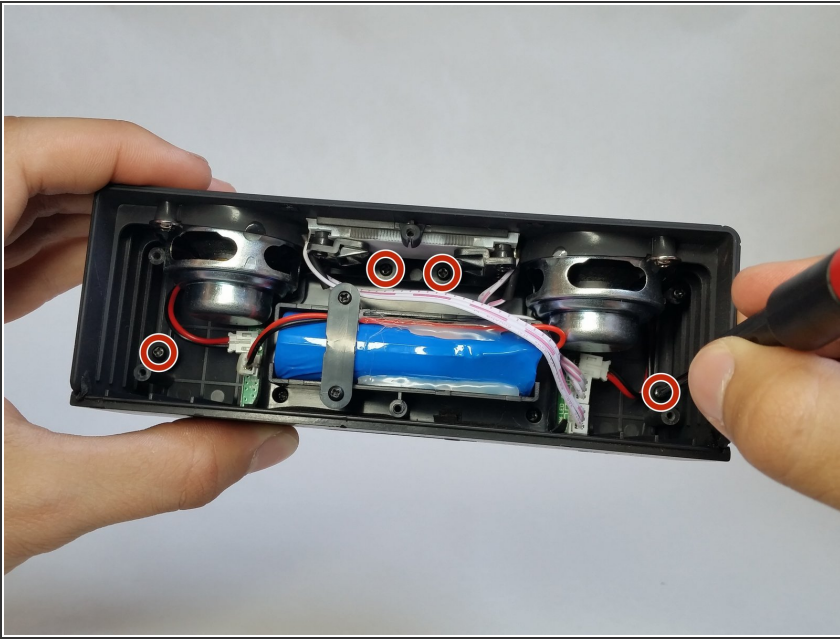
- Remove four 9mm Phillips #0 head screws from the bottom of the speaker.

Step 4



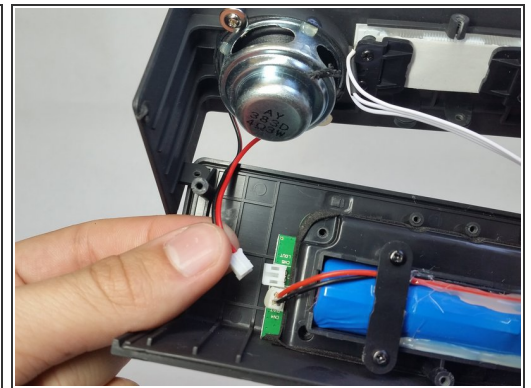
- Separate the base of the speaker from the upper housing.

Step 5



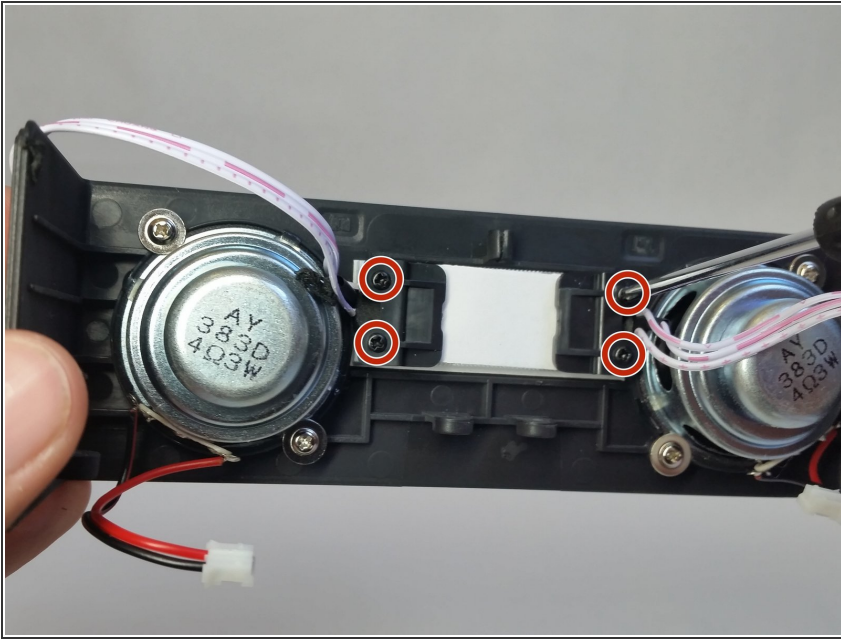
- Remove four 9mm Phillips #0 head screws from the inside of the speaker case.

Step 6



- Remove all cable connectors from the speaker motherboard.

Step 7 — Front Panel Light



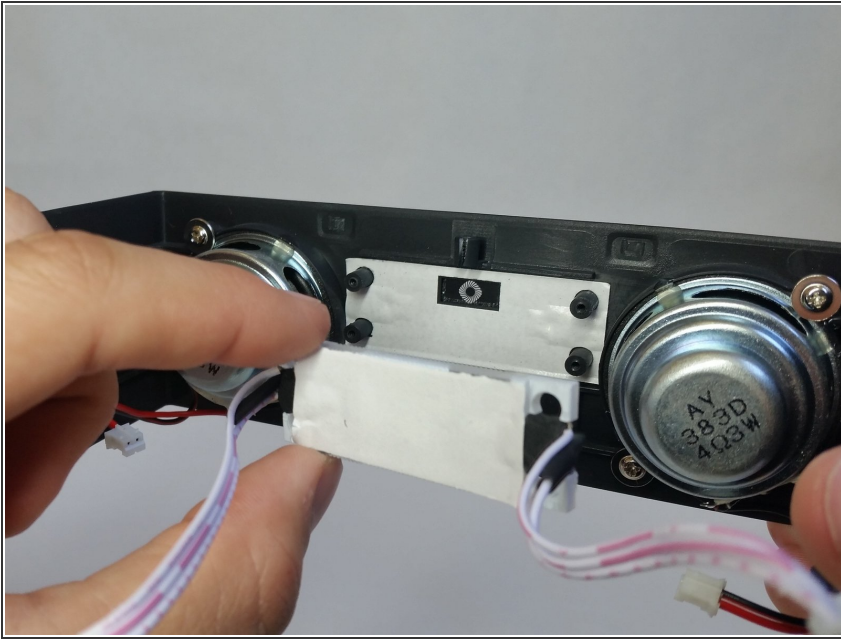
- Remove four Phillips #0 head screws from the front panel.

Step 8



- Using the tip of your finger, gently separate the front panel display from its mount.

Step 9



- Remove the front panel display.

To reassemble your device, follow these instructions in reverse order.