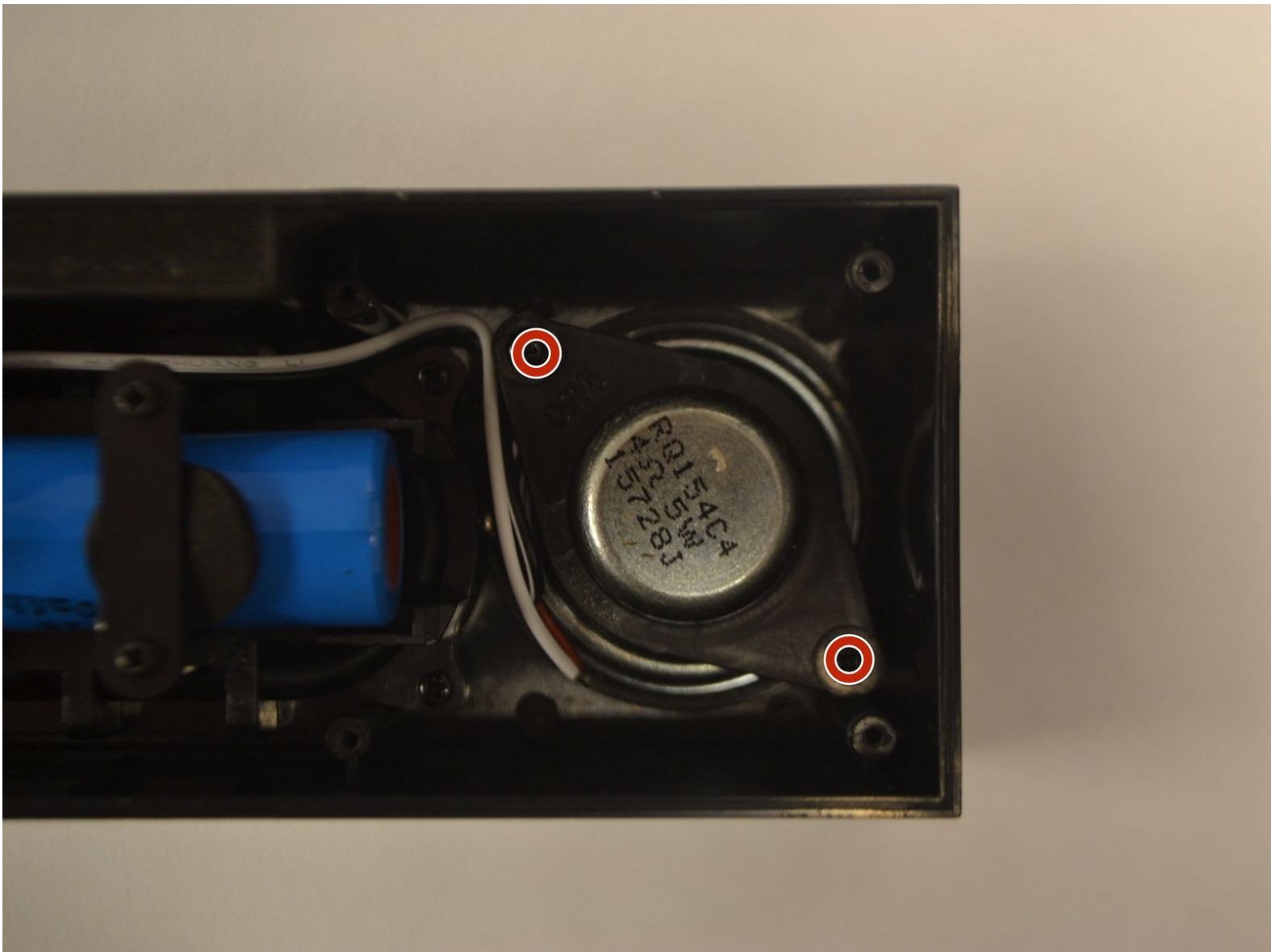




# Photive Hydra Speaker Replacement

This guide will help you replace the speakers in your device.

Written By: Andrew Chase



## INTRODUCTION

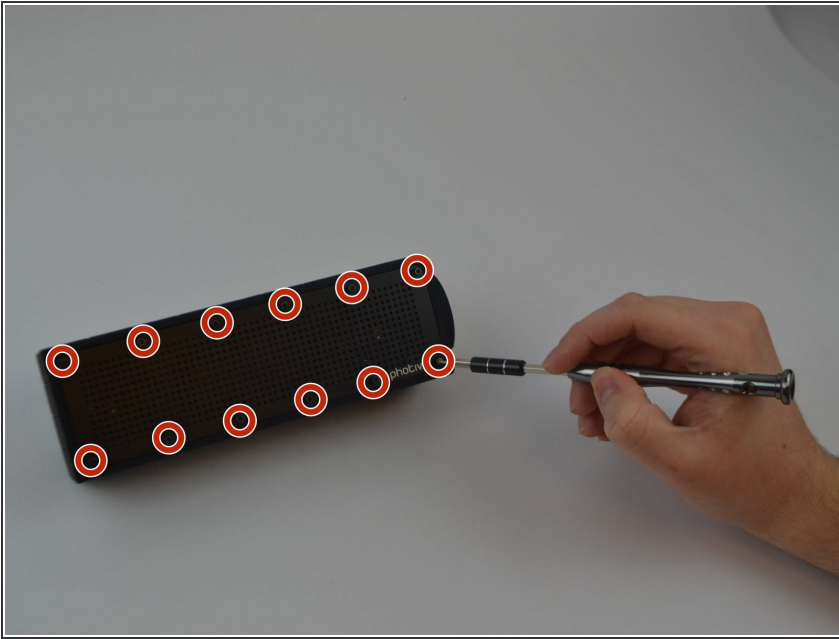
In this guide you will use a #1 and #1.5 screwdriver to remove various screws and components. Once you have gained access to the speaker you will have to use creative techniques to remove speaker.



### TOOLS:

- [Phillips #1 Screwdriver](#) (1)
  - [iFixit Opening Tools](#) (1)
  - [1.5mm Hex Screwdriver](#) (1)
-

## Step 1 — Face Plate and Back Plate



- Unscrew all twelve Hex Head 1.5 (Length-3/8", Head- 1/8") screws using a 1.5mm hex screwdriver.

## Step 2



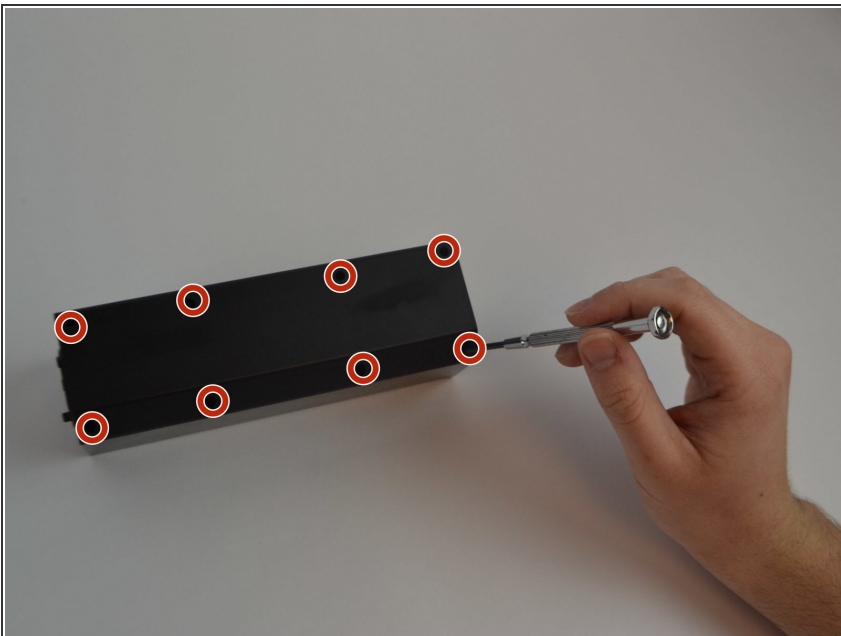
- Use a plastic opening tool to pry off the face plate.

### Step 3



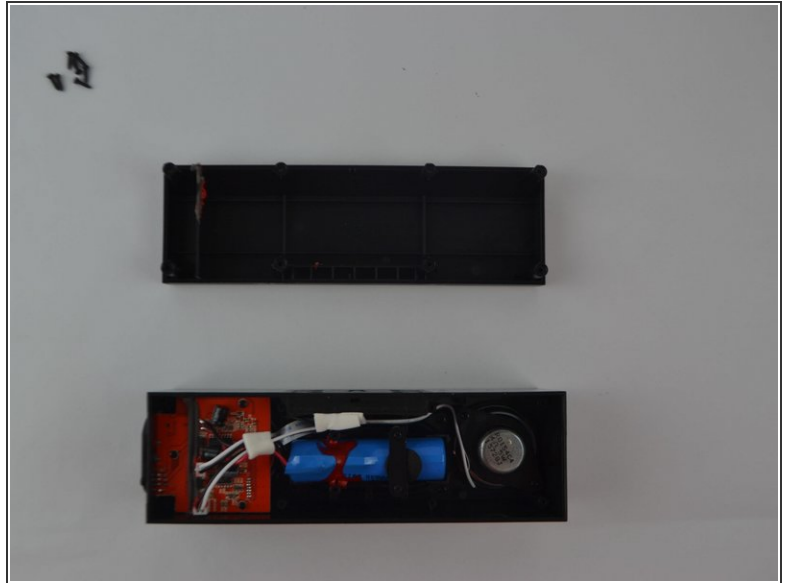
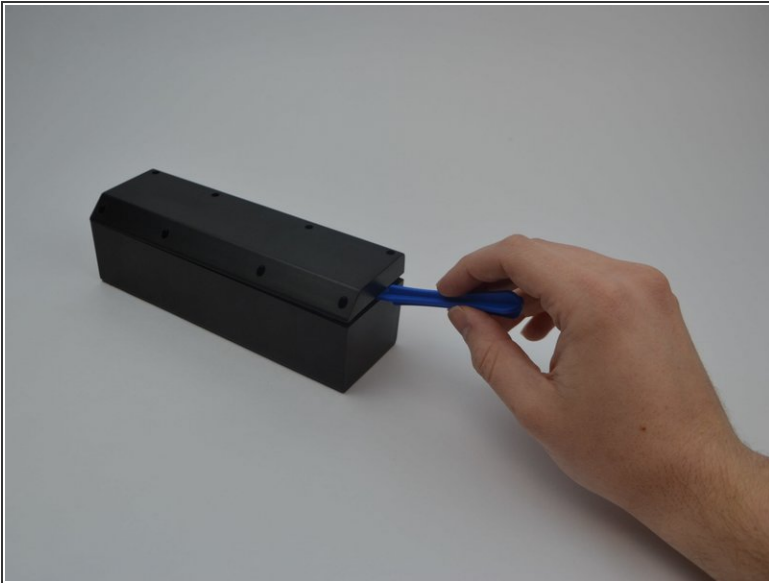
- Remove the rubber casing by using your fingers to pull off. Be sure not to tear or rip the rubber casing.

### Step 4




- Flip the device upside down and remove all eight Phillips (Length-3/8", Head-1/8") screws using a standard #1 Phillips screwdriver.

## Step 5

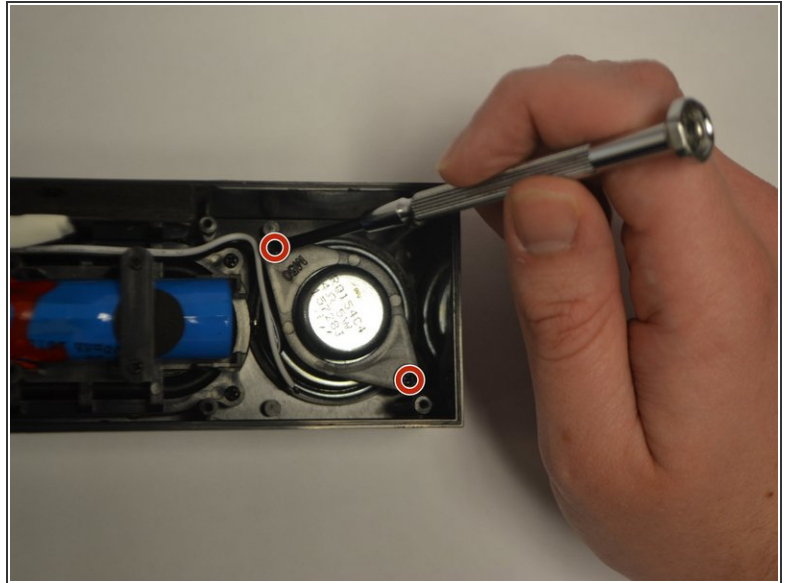
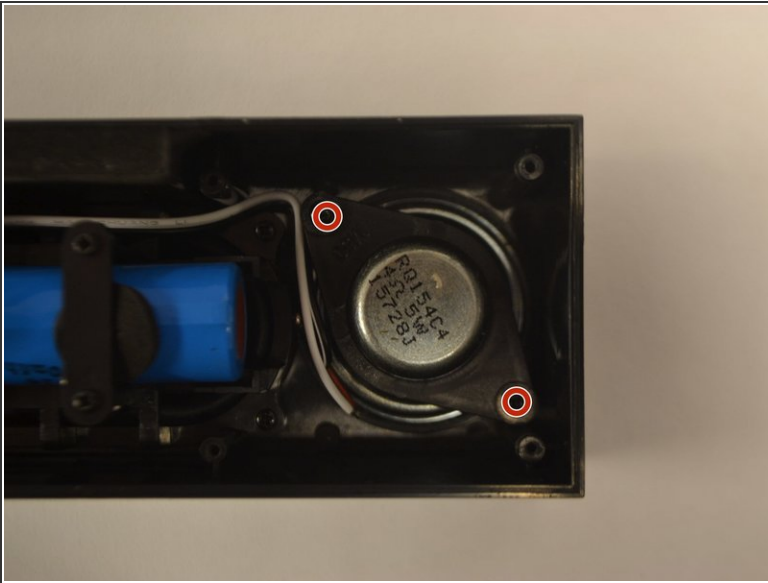


- Use plastic opening tool to pry off back plate.
- Move the plastic opening tool along the the device to further pry open the device.

 Be careful when taking this plate off. You may accidentally damage the water proof seal.

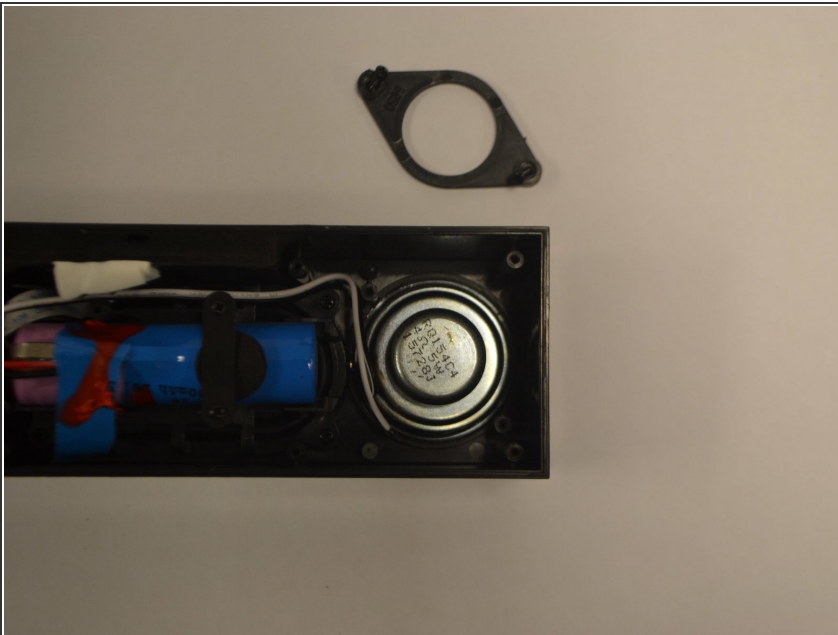


## Step 6 — Speaker



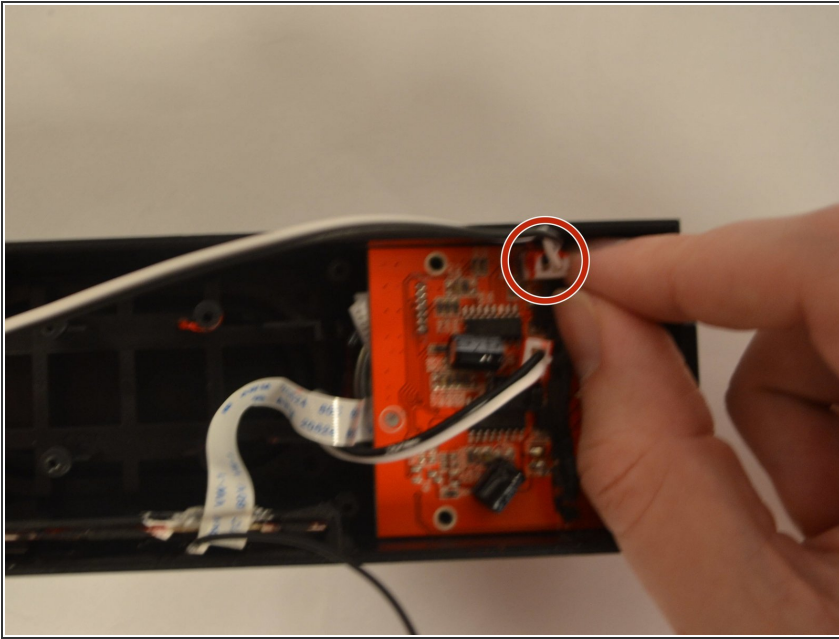
- Identify the two Phillips (Length-5/16" Head-1/8") screws holding the speaker in place and remove them.

## Step 7



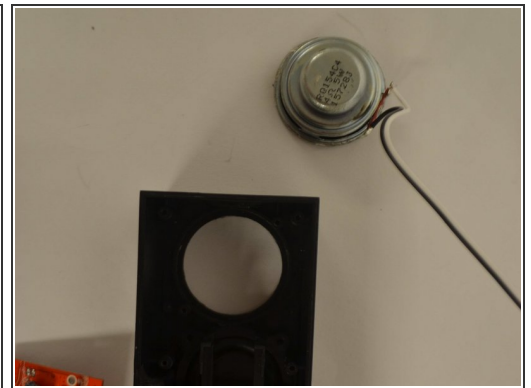
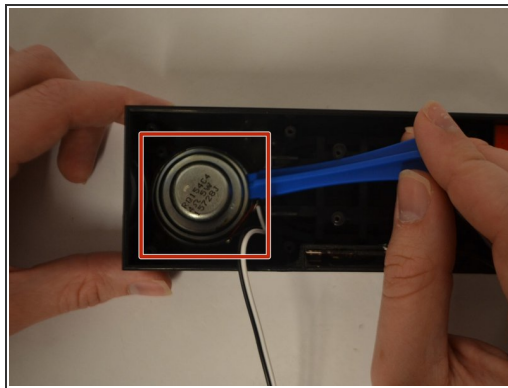
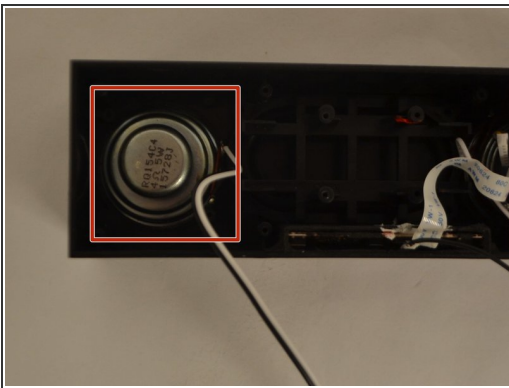
- Remove the bracket holding the speaker in place.

## Step 8



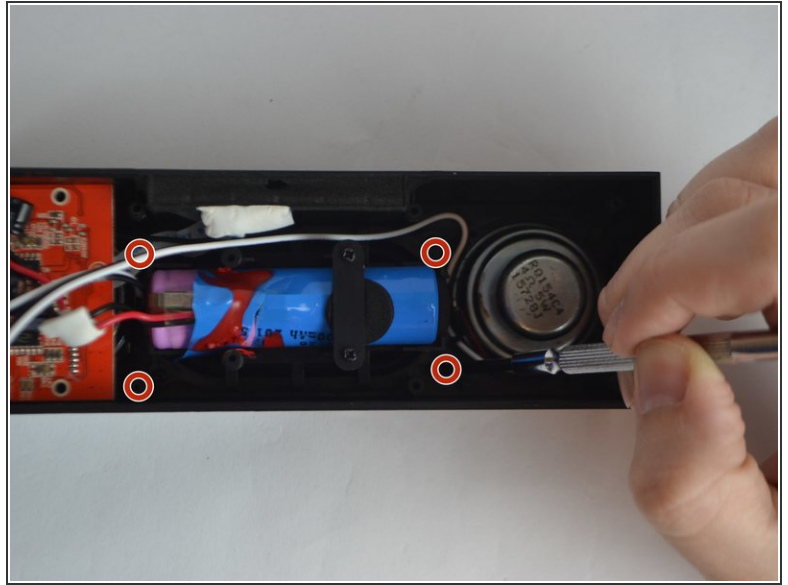
- Disconnect the wires that are connected from the speaker to the motherboard.

## Step 9



- After all extra components are out of the way, you will need to remove the adhesive holding the speaker using either a heating gun or the iOpener kit (both can be purchased under the Parts and Tools Store section of the menu bar). Once that is completed, replace the broken speaker with the new, functional speaker.

## Step 10



- Identify the four Phillips (Length-5/16", Head-1/8") screws holding the speaker housing (below the battery) and remove them.

## Step 11



- Identify motherboard.

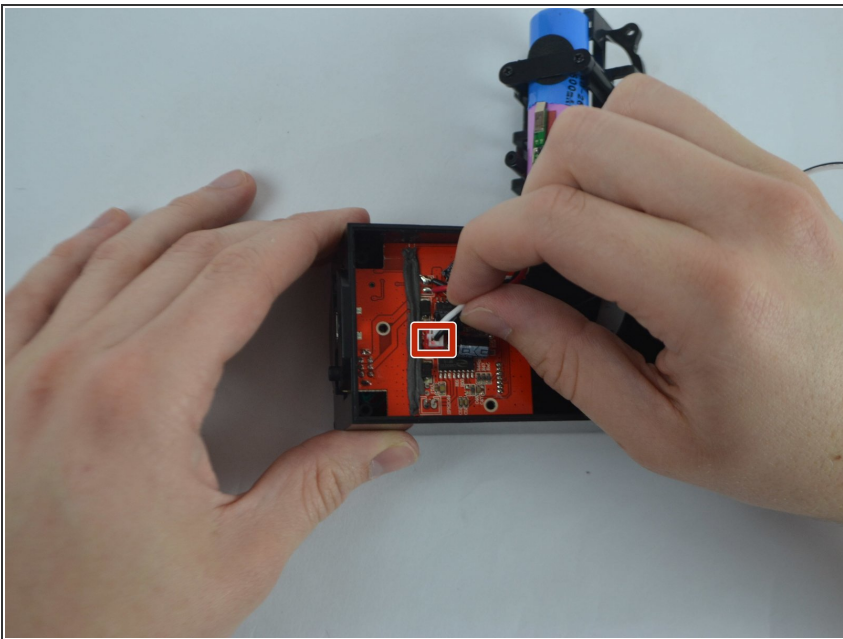


## Step 12



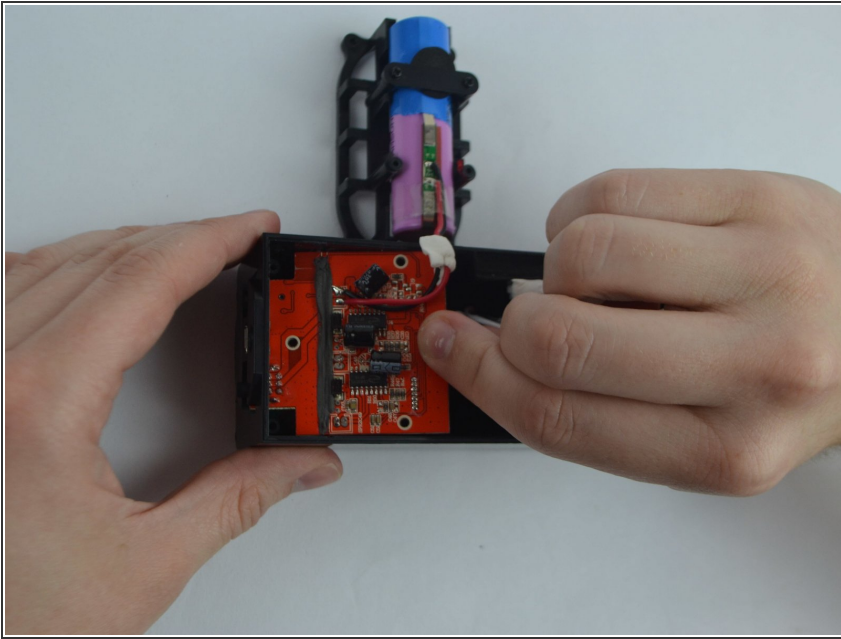
- Disconnect highlighted electrical cords.

## Step 13



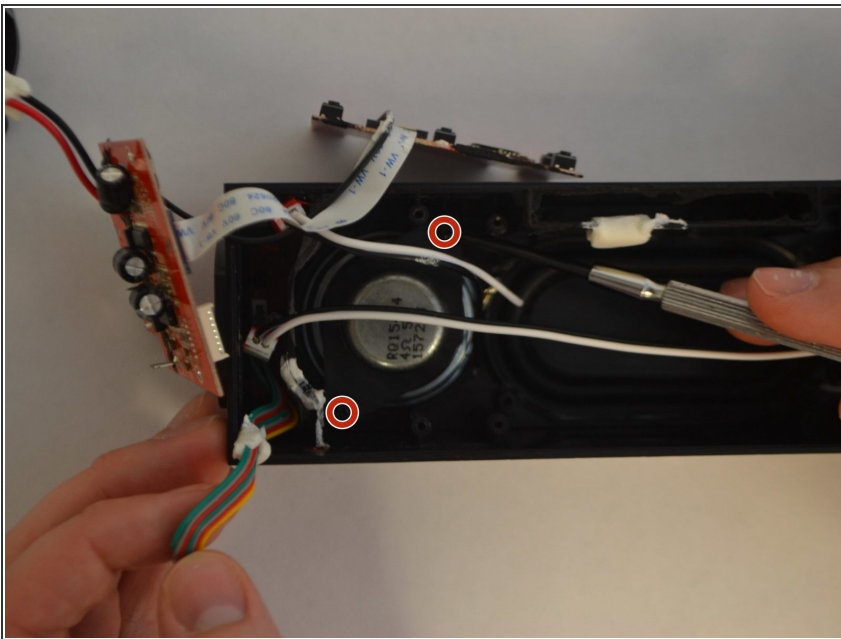
- Disconnect second highlighted electrical cord.

## Step 14



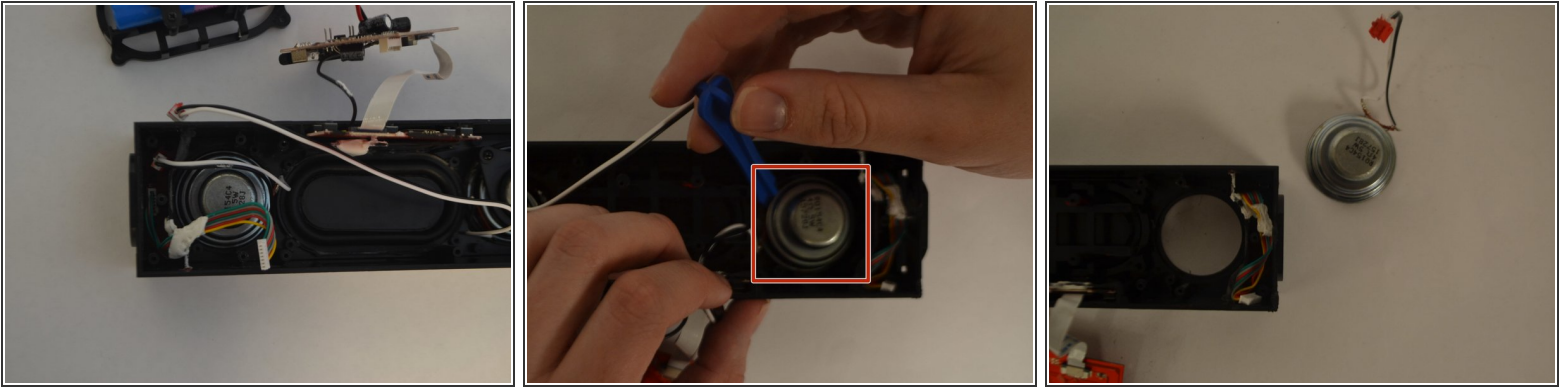
- Pull motherboard up and away in order to remove it.

## Step 15



- Identify the two Phillips (Length- 5/16", Head-1/8") screws holding the speaker in place and remove them.

## Step 16



- Upon removing the plastic bracket, you will need to remove the adhesive using either a heating gun or the iOpener kit (both can be purchased under the Parts and Tools Store section of the menu bar) that is holding the speaker in place. Once that is completed, replace the broken speaker with a new, functional speaker.

To reassemble your device, follow these instructions in reverse order.