



Photive Hydra Face Plate and Back Plate Replacement

This guide serves to help you remove and replace the front face plate if cracked or damaged.

Written By: Andrew Chase



INTRODUCTION

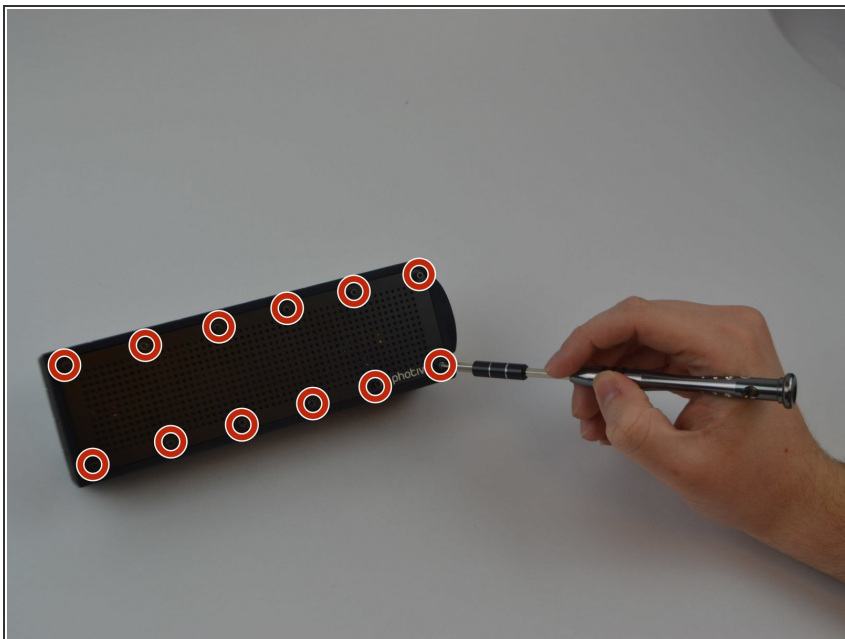
The back plate is used to protect the device from damage and used to keep speaker sealed. Be careful with puncturing rubber case and loosening the small screws.



TOOLS:

- [Phillips #1 Screwdriver](#) (1)
 - [iFixit Opening Tools](#) (1)
 - [1.5mm Hex Screwdriver](#) (1)
-

Step 1 — Face Plate and Back Plate



- Unscrew all twelve Hex Head 1.5 (Length-3/8", Head- 1/8") screws using a 1.5mm hex screwdriver.

Step 2



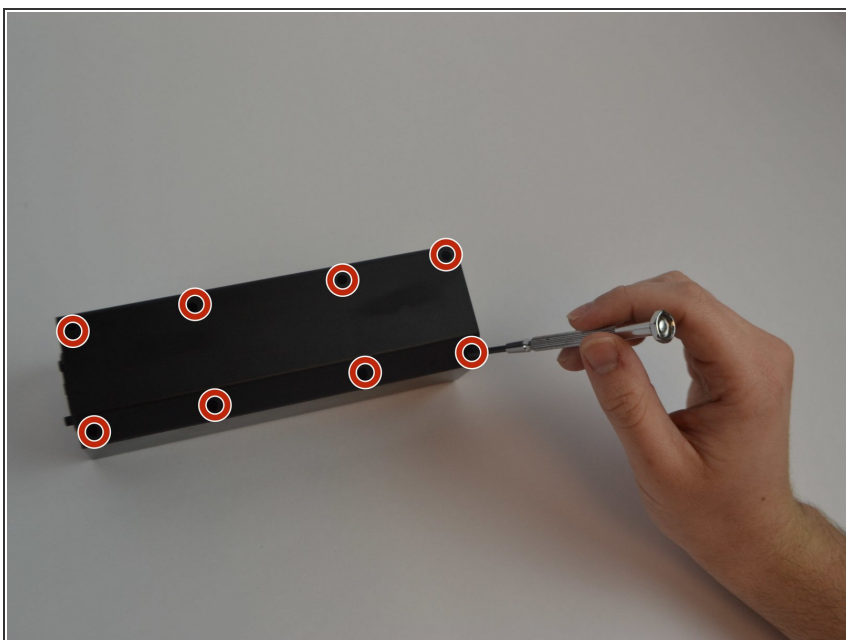
- Use a plastic opening tool to pry off the face plate.

Step 3



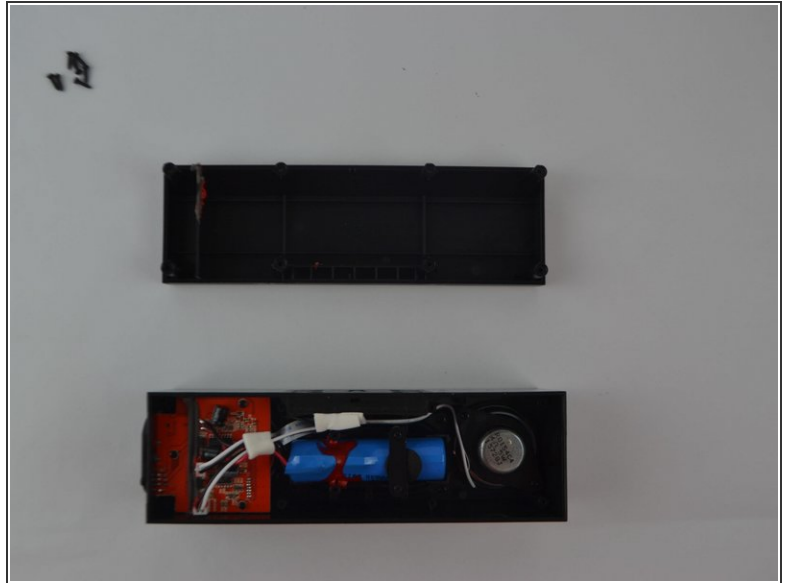
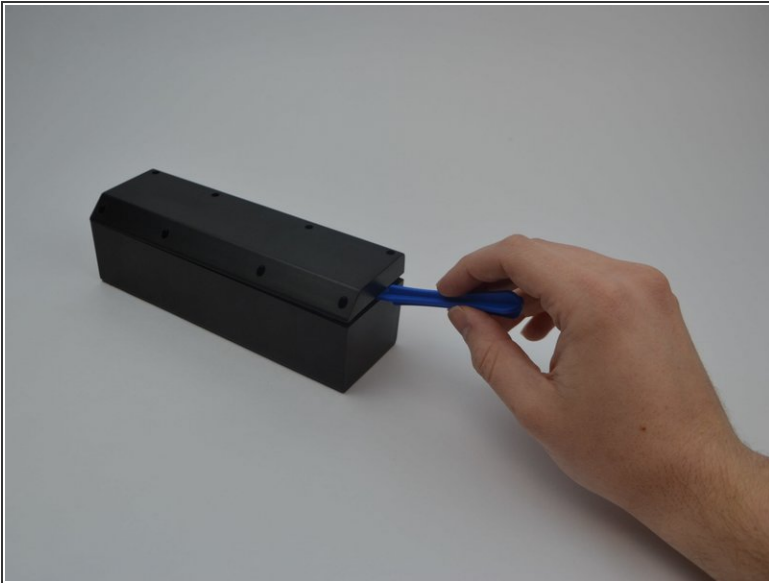
- Remove the rubber casing by using your fingers to pull off. Be sure not to tear or rip the rubber casing.

Step 4



- Flip the device upside down and remove all eight Phillips (Length-3/8", Head-1/8") screws using a standard #1 Phillips screwdriver.

Step 5



- Use plastic opening tool to pry off back plate.
 - Move the plastic opening tool along the the device to further pry open the device.
- ⚠ Be careful when taking this plate off. You may accidentally damage the water proof seal.

To reassemble your device, follow these instructions in reverse order.