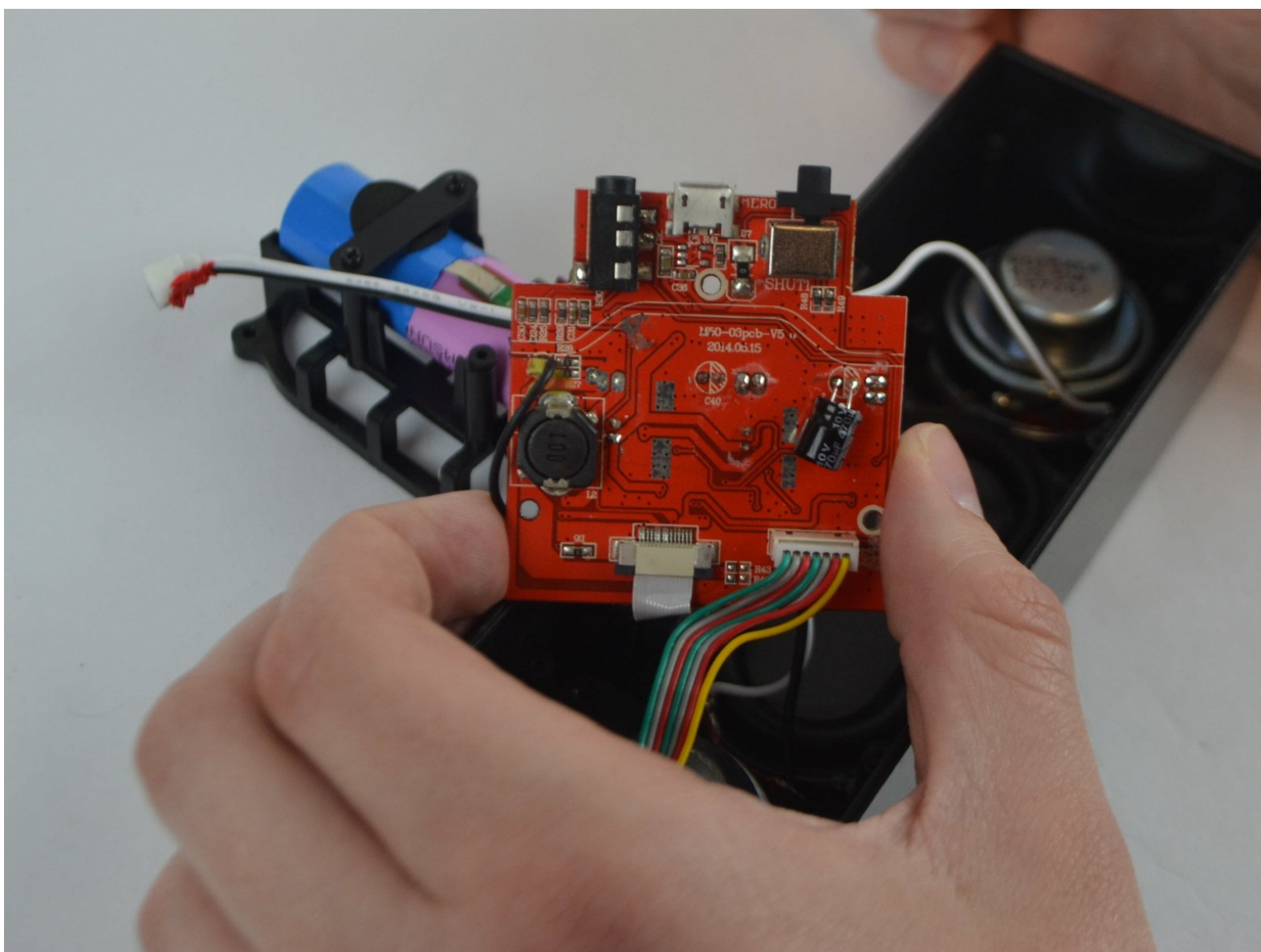




Photive Hydra USB Connector Replacement

This guide will help you replace the USB connector which has become displaced from its intended position.

Written By: Jose Muzaurieta



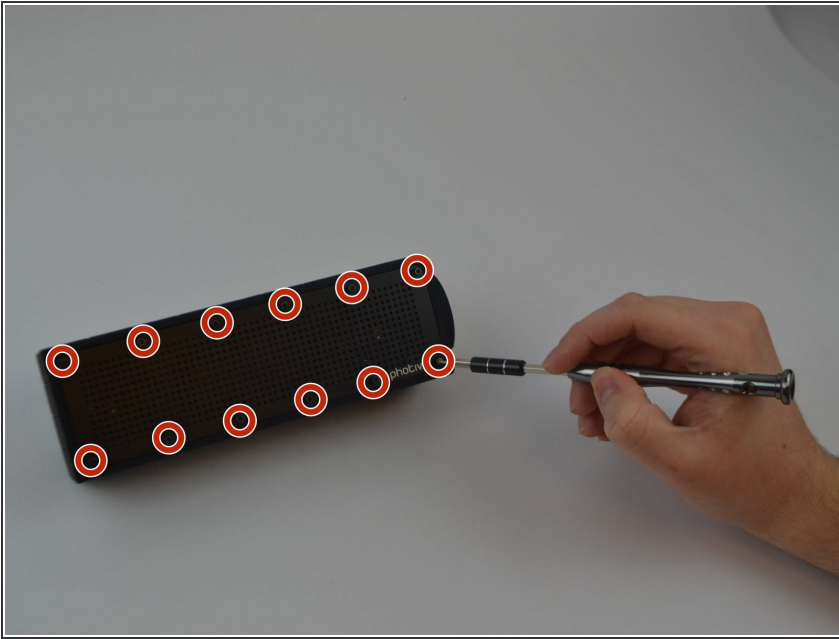
INTRODUCTION

This guide will be helpful in the case that your device will not charge or has been dislodged. In this guide you will be using a #1 and #1.5 screwdriver, to remove screws and components. Once you have access to the motherboard, locate and use soldering techniques to remove USB connector.

TOOLS:

- [Phillips #1 Screwdriver](#) (1)
 - [iFixit Opening Tools](#) (1)
 - [1.5mm Hex Screwdriver](#) (1)
 - [Soldering Iron](#) (1)
-

Step 1 — Face Plate and Back Plate



- Unscrew all twelve Hex Head 1.5 (Length-3/8", Head- 1/8") screws using a 1.5mm hex screwdriver.

Step 2



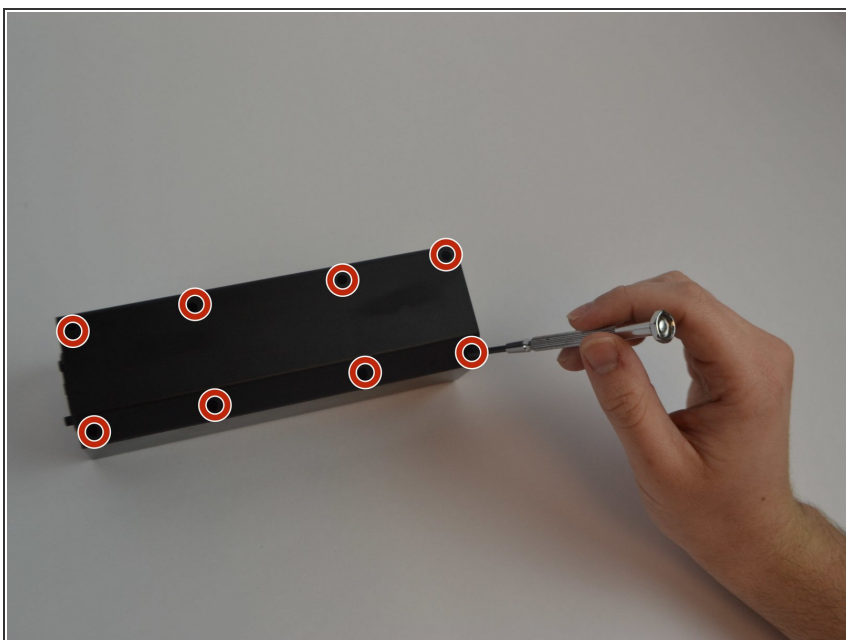
- Use a plastic opening tool to pry off the face plate.

Step 3



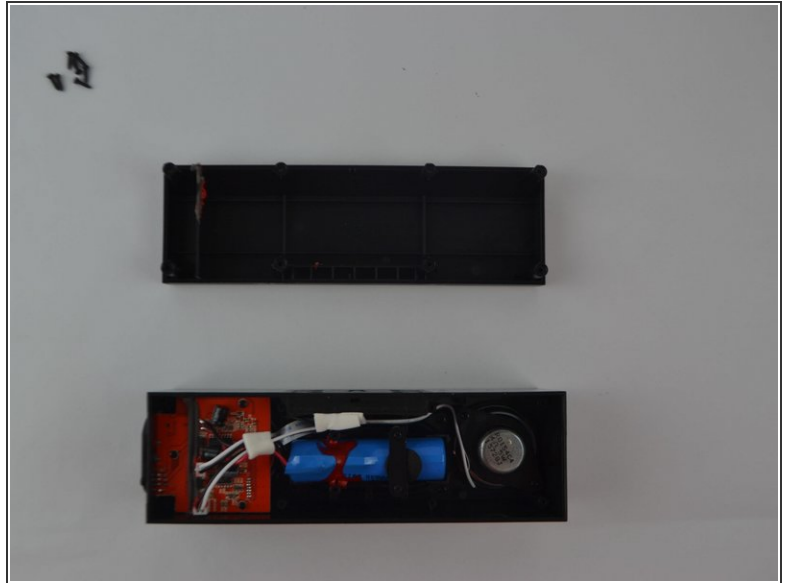
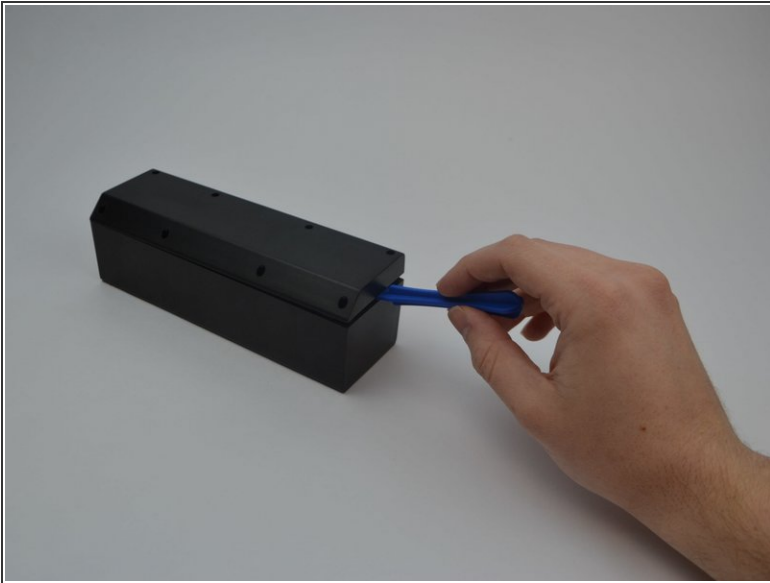
- Remove the rubber casing by using your fingers to pull off. Be sure not to tear or rip the rubber casing.

Step 4




- Flip the device upside down and remove all eight Phillips (Length-3/8", Head-1/8") screws using a standard #1 Phillips screwdriver.

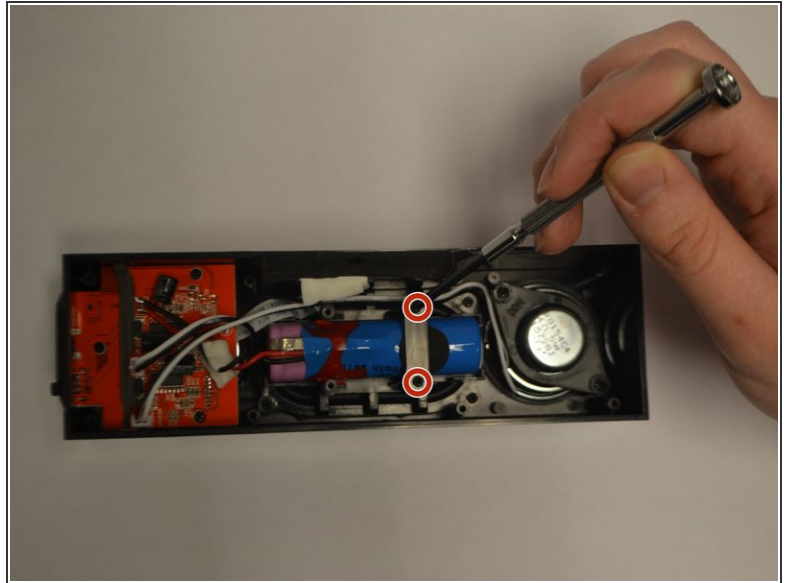
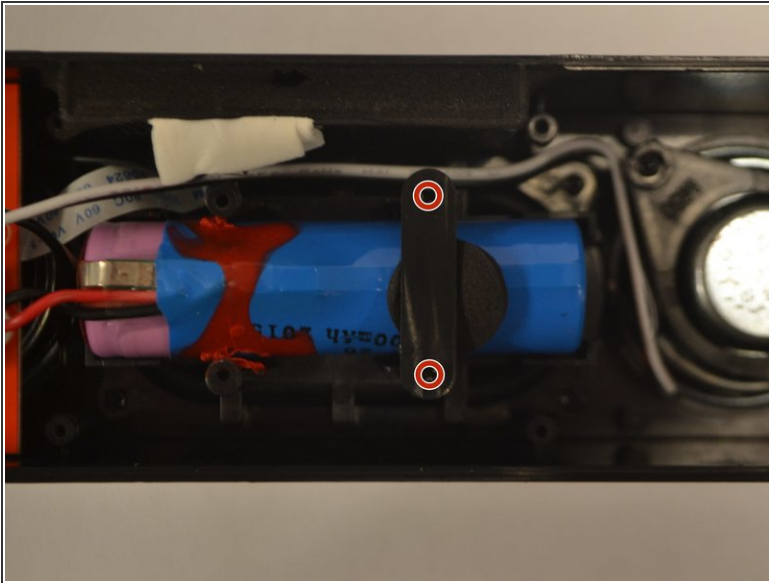
Step 5



- Use plastic opening tool to pry off back plate.
- Move the plastic opening tool along the the device to further pry open the device.

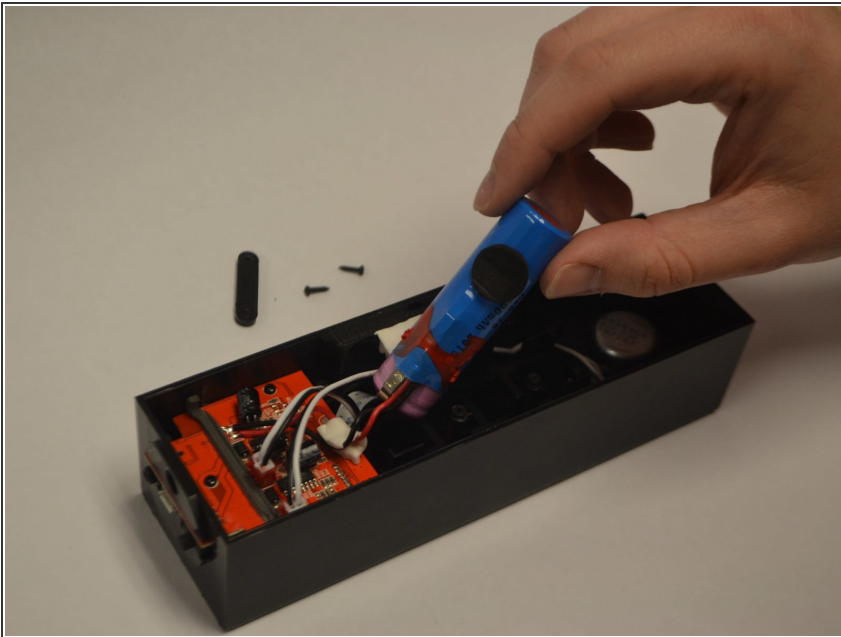
 Be careful when taking this plate off. You may accidentally damage the water proof seal.

Step 6 — Battery (Prerequisite)



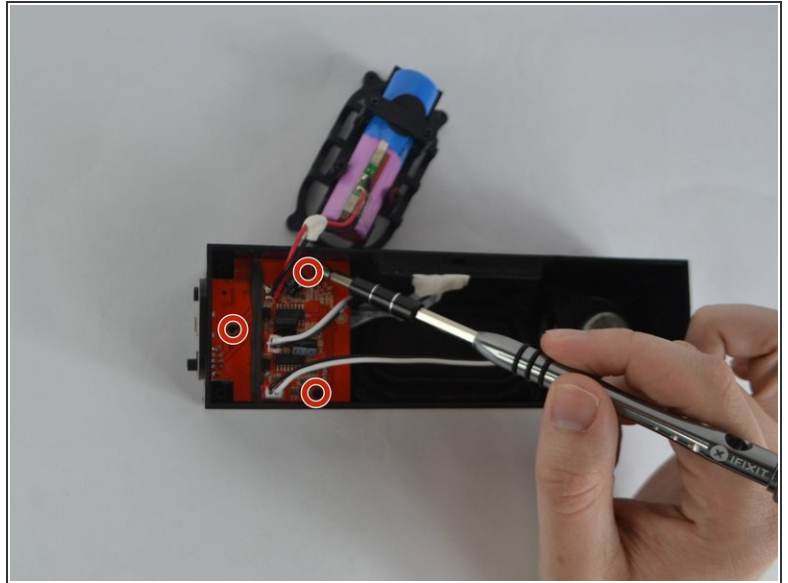
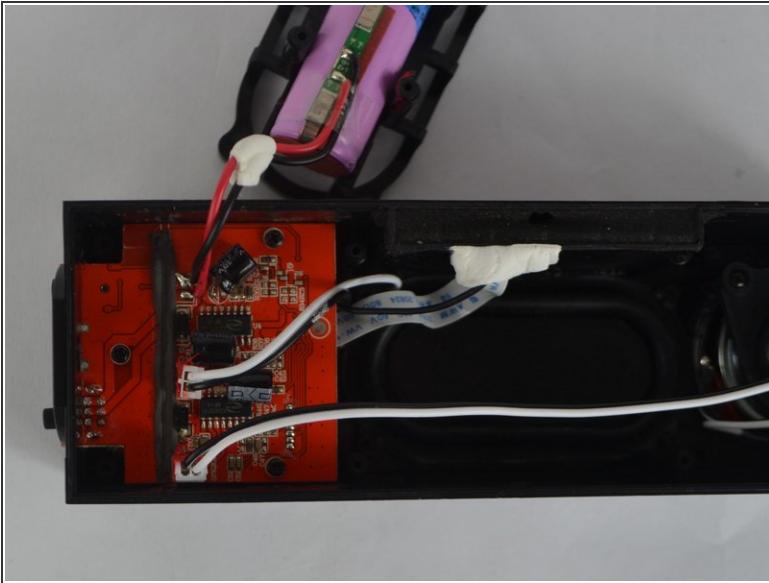
- Identify the two Phillips (Length-5/16", Head-1/8") screws holding the battery in place and remove them using a #1 screwdriver.

Step 7



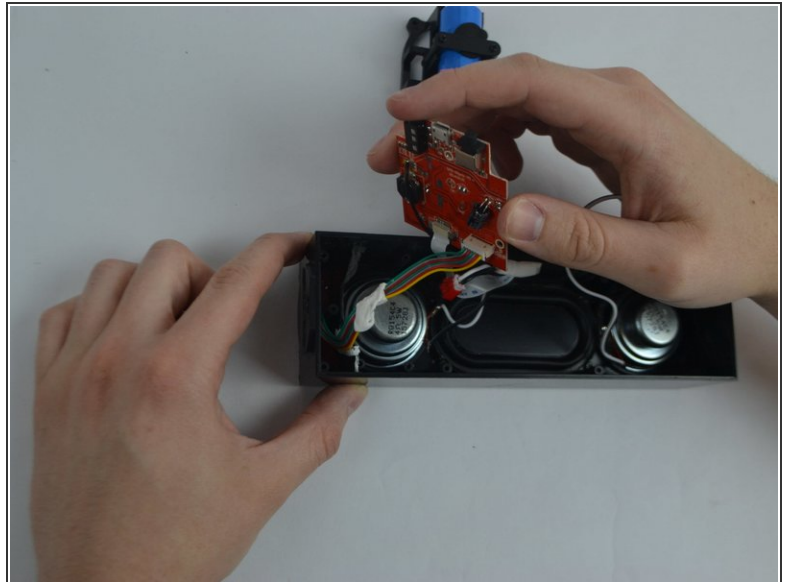
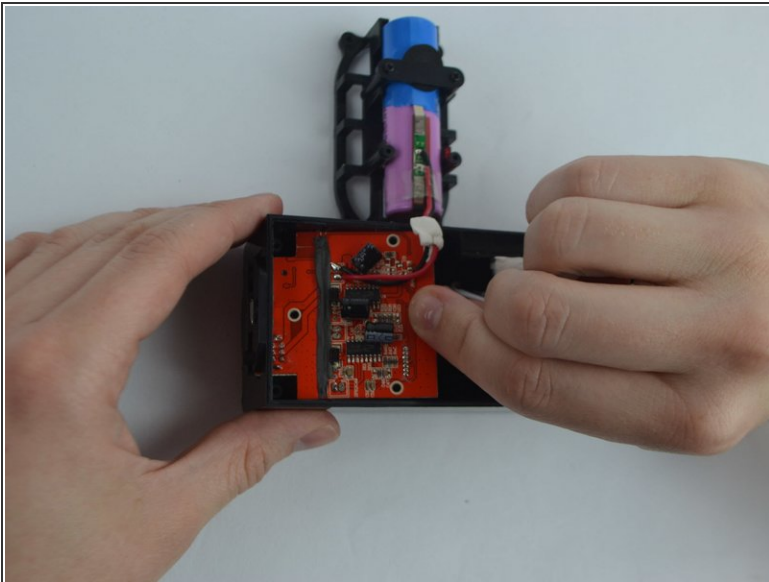
- Remove the ICR18650-26M battery from its position by pulling upwards and out of the casing.

Step 8 — USB Connector



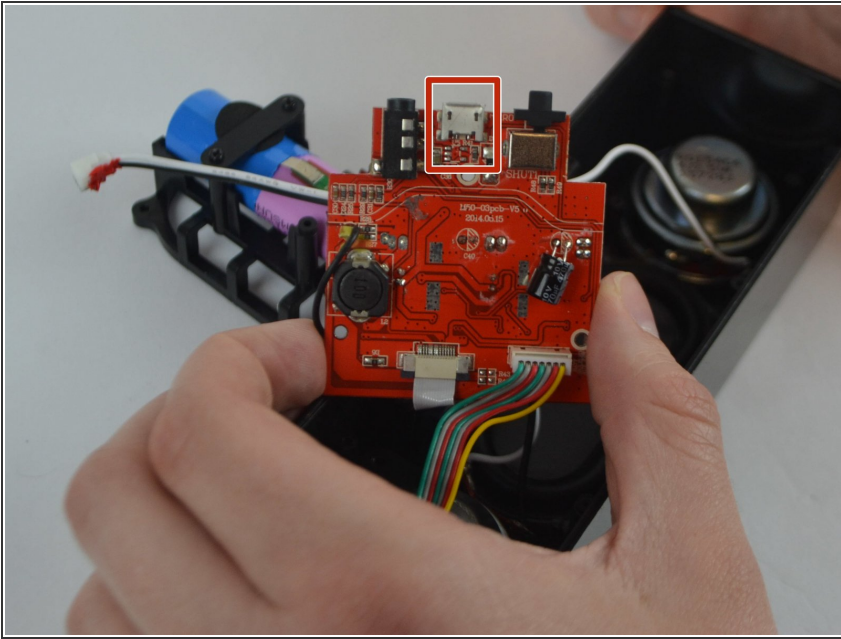
- Identify the motherboard and three Phillips (Length-1/8", Head-1/8") screws and remove them using a #1 screwdriver.

Step 9



- Pull the motherboard up and out to remove.

Step 10



- Identify the USB connector. Remove and replace the component with a functioning USB device. Refer to the link below for soldering techniques.
[How To Solder and Desolder Connections](#)

To reassemble your device, follow these instructions in reverse order.