



Photive Rain Battery Replacement

Replace the battery of your Photive Rain.

Written By: Shozaf Zaidi



INTRODUCTION

Use this guide to replace a failed battery in the Photive Rain.



TOOLS:

- [Phillips #1 Screwdriver](#) (1)
-

Step 1 — Back Panel



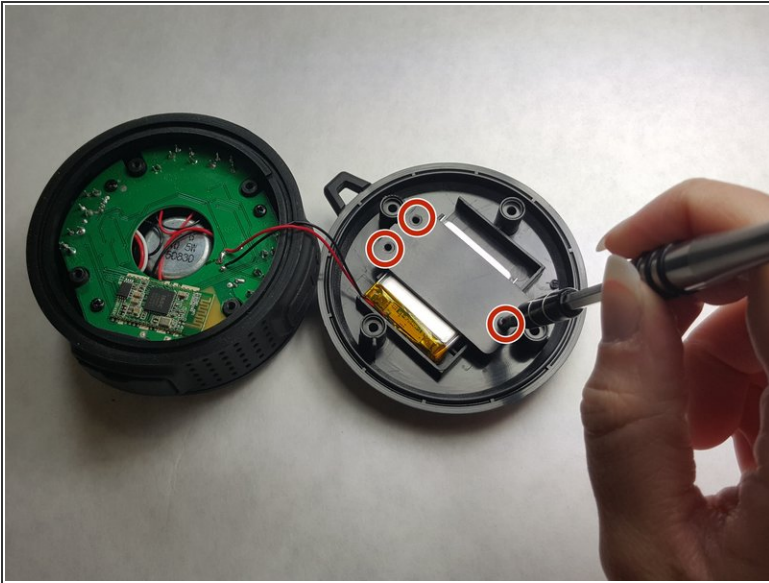
- ❗ Turn the speaker off before disassembling.
- Pull the suction cup from its groove in the back of the speaker by twisting and turning it.

Step 2



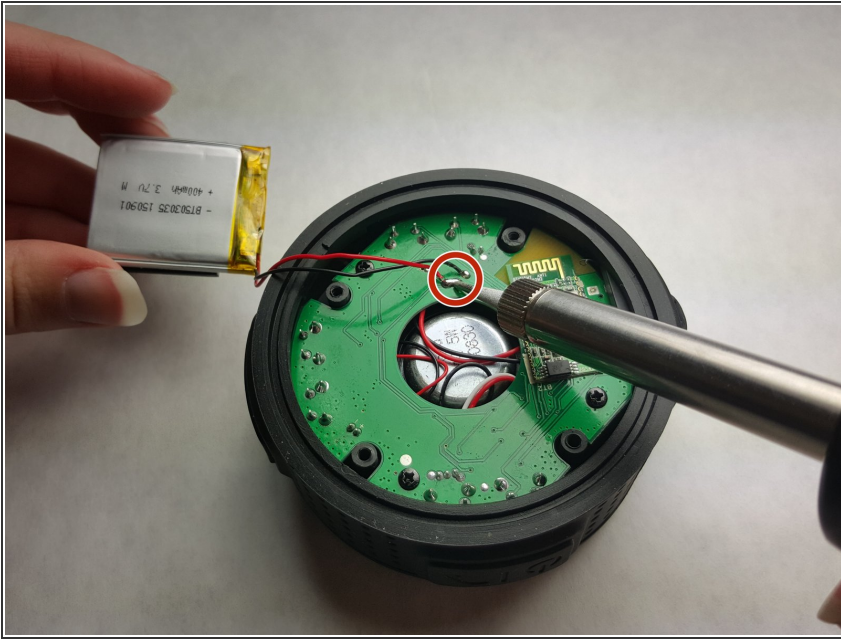
- Remove the four 8.5 mm screws from the back panel of the speaker.
- Remove back panel

Step 3 — Battery



- Remove the plastic cover in front of the battery slot.
 - Unscrew all the 8.5mm screws that hold the cover to the slot.
- Separate the battery from the back panel as shown in photograph 3.
 - ⚠ Caution: manipulation of the device while the battery is still connected to the motherboard may result in electric shock.

Step 4



- Remove the battery from the motherboard.
 - Use a soldering pen to remove the solder connecting the battery wires to the motherboard.
- ⓘ Click here to access the [iFixit Soldering Guide](#). This will provide a safe and instructive manual on the usage of soldering pens.

To reassemble your device, follow these instructions in reverse order.