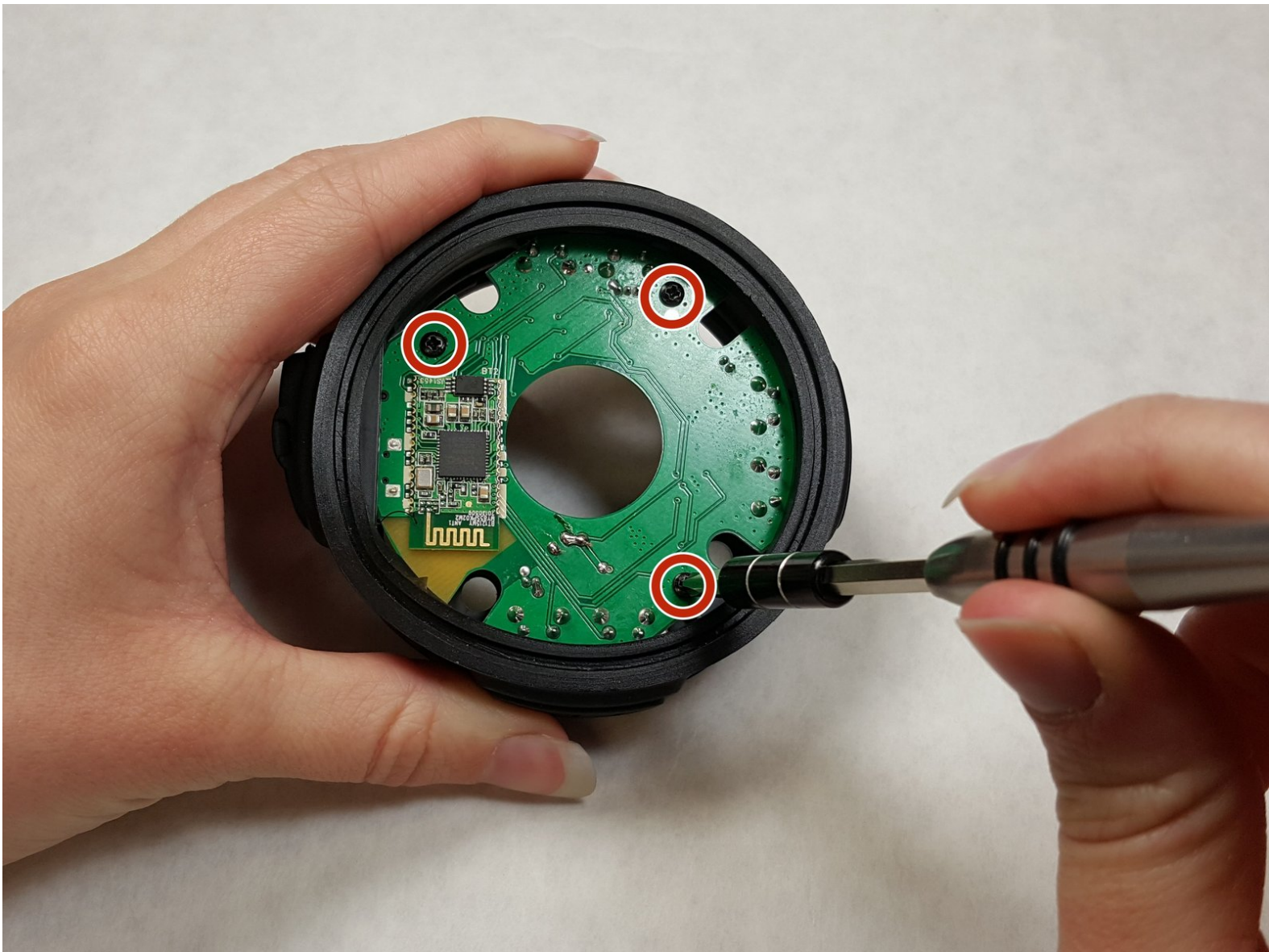




Photive Rain Motherboard Replacement

This guide gives a description of how to remove the motherboard from the device to be able to replace it.

Written By: Shozaf Zaidi



INTRODUCTION

The motherboard is the key component behind this little speaker. If you're experiencing issues that have persisted through other troubleshooting guides, it may be time to replace the motherboard. The motherboard is a delicate piece of equipment, so work slowly and carefully to avoid damaging the speaker.



TOOLS:

- [iFixit Opening Tools](#) (1)
 - [Phillips #1 Screwdriver](#) (1)
-

Step 1 — Back Panel



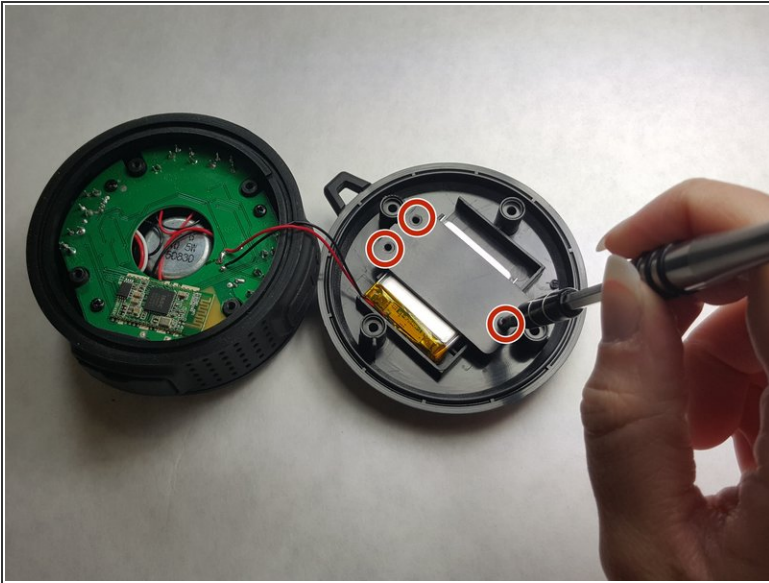
- ❗ Turn the speaker off before disassembling.
- Pull the suction cup from its groove in the back of the speaker by twisting and turning it.

Step 2



- Remove the four 8.5 mm screws from the back panel of the speaker.
- Remove back panel


Step 3 — Battery



- Remove the plastic cover in front of the battery slot.
 - Unscrew all the 8.5mm screws that hold the cover to the slot.
- Separate the battery from the back panel as shown in photograph 3.
 - ⚠ Caution: manipulation of the device while the battery is still connected to the motherboard may result in electric shock.

Step 4



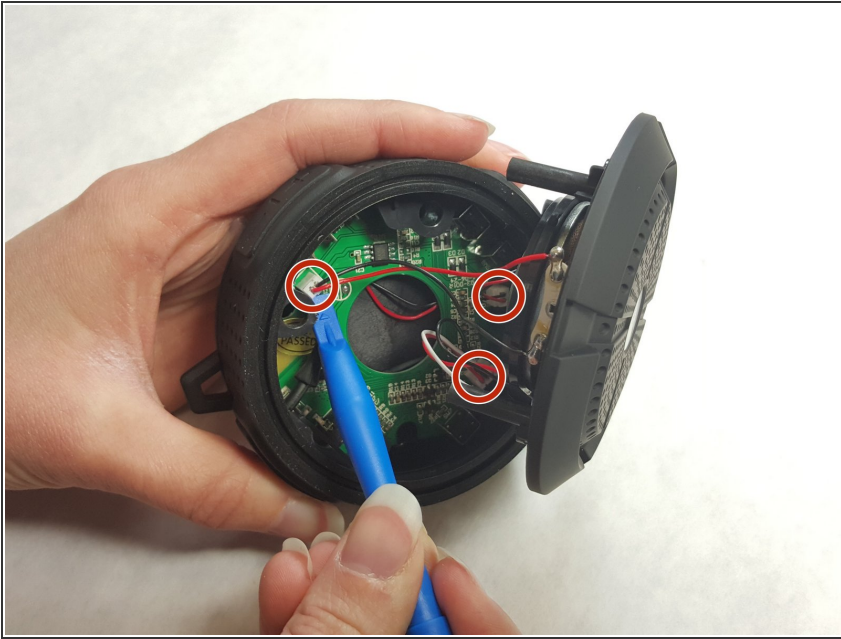
- Remove the battery from the motherboard.
 - Use a soldering pen to remove the solder connecting the battery wires to the motherboard.
-  Click here to access the [iFixit Soldering Guide](#). This will provide a safe and instructive manual on the usage of soldering pens.

Step 5 — Speaker



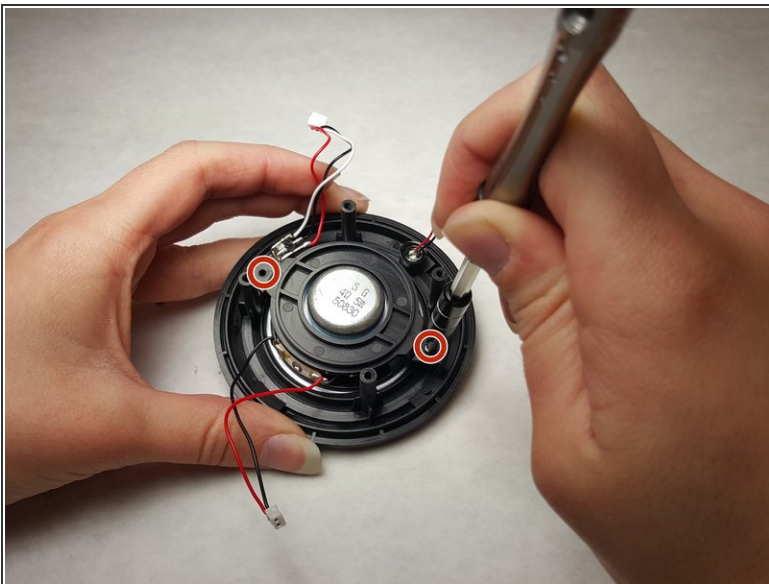
- Carefully pull the front panel apart from the device.

Step 6



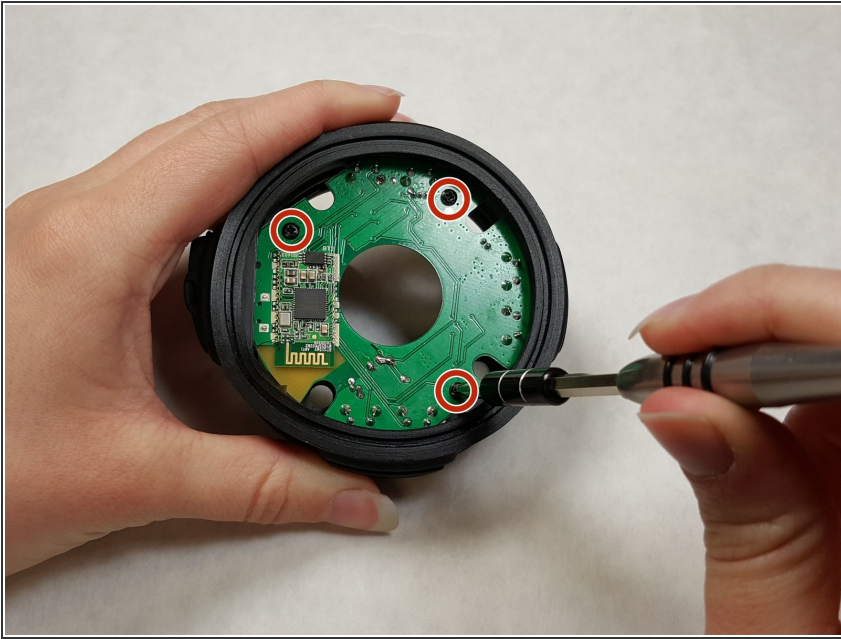
- Detach the plastic speaker connections from the motherboard using a plastic opening tool.
- Some force may be necessary to remove the plastic clips.

Step 7



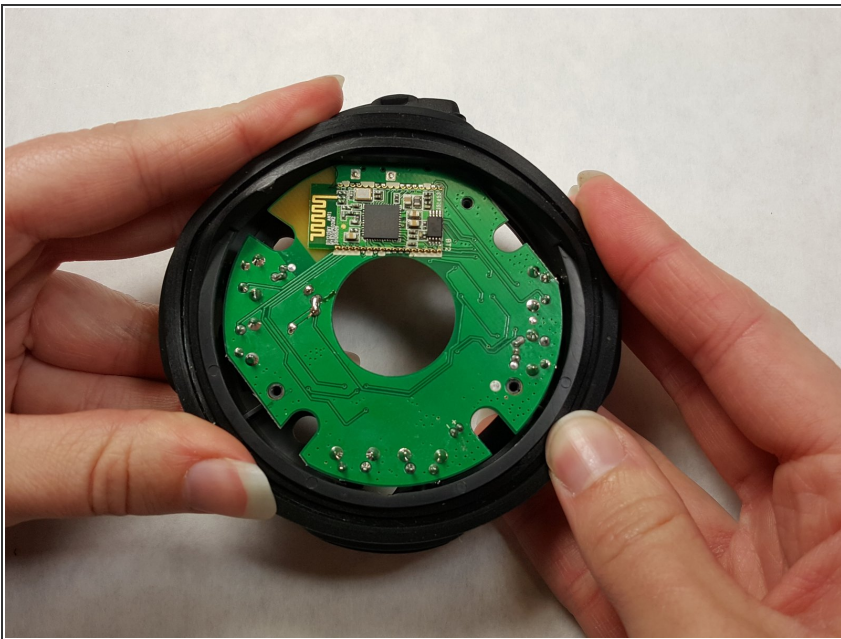
- After the speaker and the front panel are detached, remove the two 8.5mm screws that holds the speaker to the front panel.

Step 8 — Motherboard



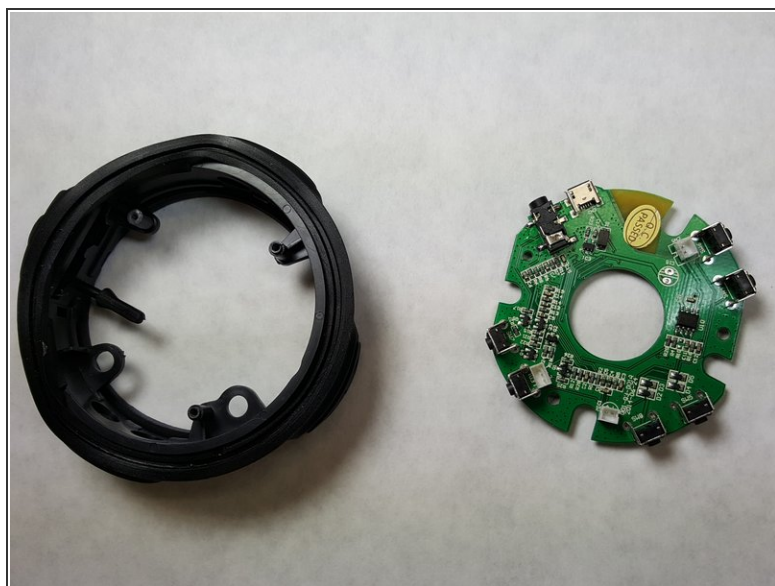
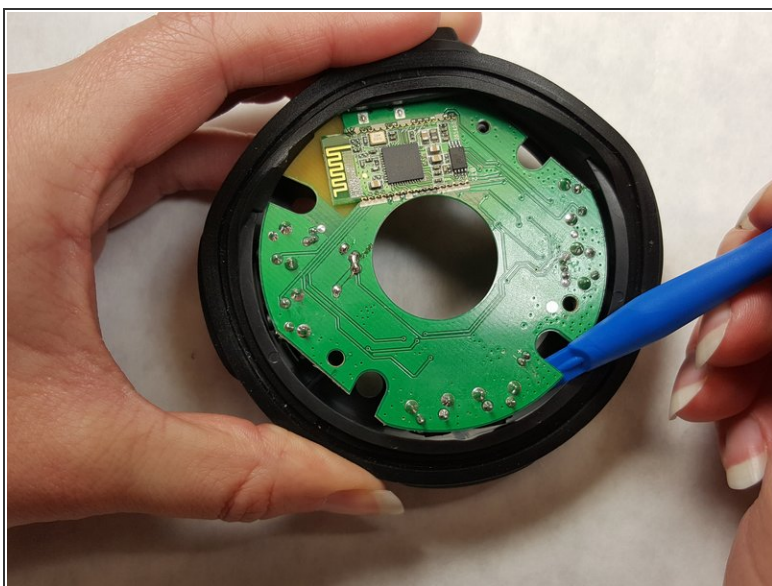
- From the back of the motherboard, unscrew the three Phillips head screws holding the motherboard in place.

Step 9



- Pull the rubber away from the edge of the motherboard.

Step 10



- Use the plastic opening tool to remove motherboard from device.
- ⓘ The second photograph displays a properly removed motherboard.

To reassemble your device, follow these instructions in reverse order.