



Pioneer Elite PRO-RO6U Control Panel Circuit Board Replacement

Follow these steps to replace the control panel circuit board behind the front face of the Pioneer Elite Pro-R06U.

Written By: Cody Carter



INTRODUCTION

A faulty or defective front control panel may cause buttons on the media receiver to be unresponsive. Replacing the circuit board should resolve issues with the front controls and buttons.

TOOLS:

- [Phillips #1 Screwdriver](#) (1)
 - [iFixit Opening Tools](#) (1)
-

Step 1 — Control Panel Circuit Board



- Remove the two 6.4 mm Phillips screws on each side of the device's casing.

Step 2



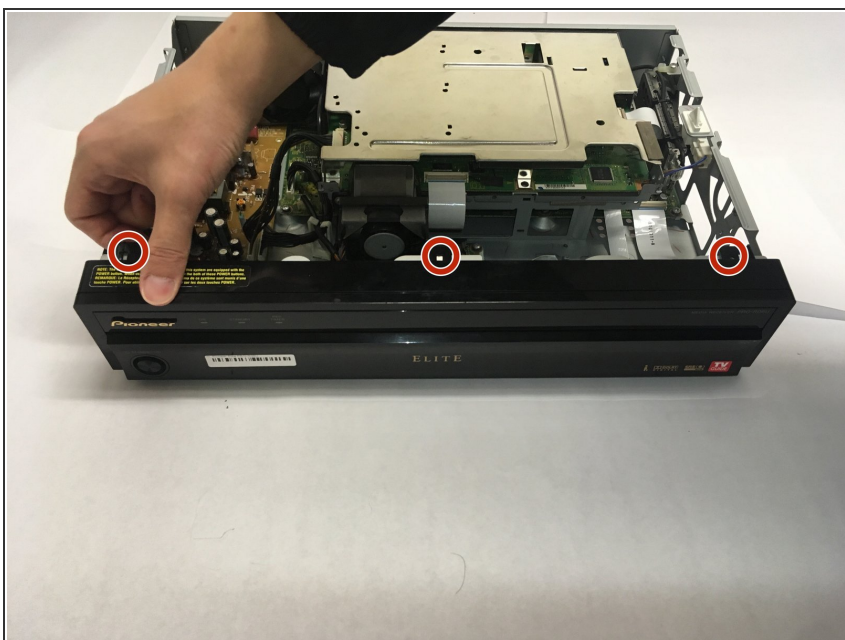
- Remove the two 6.5 mm Phillips screws on the back of the device casing.

Step 3



- Grip the front panel in one hand and the back of the casing in the other. Pull the casing back, and slide it up and away from the inner box.

Step 4



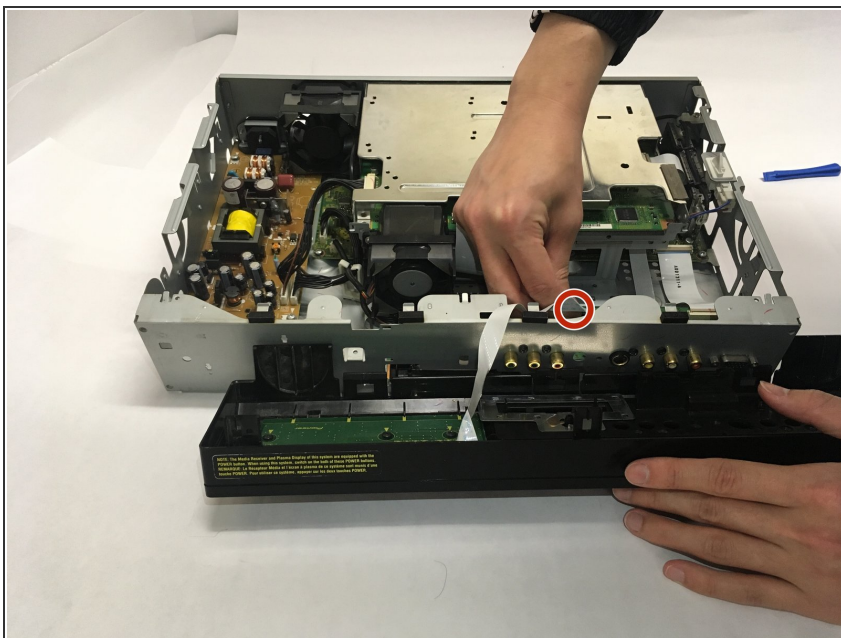
- Unlatch the three plastic connectors on the top of the receiver that hold the front panel to the device casing.

Step 5



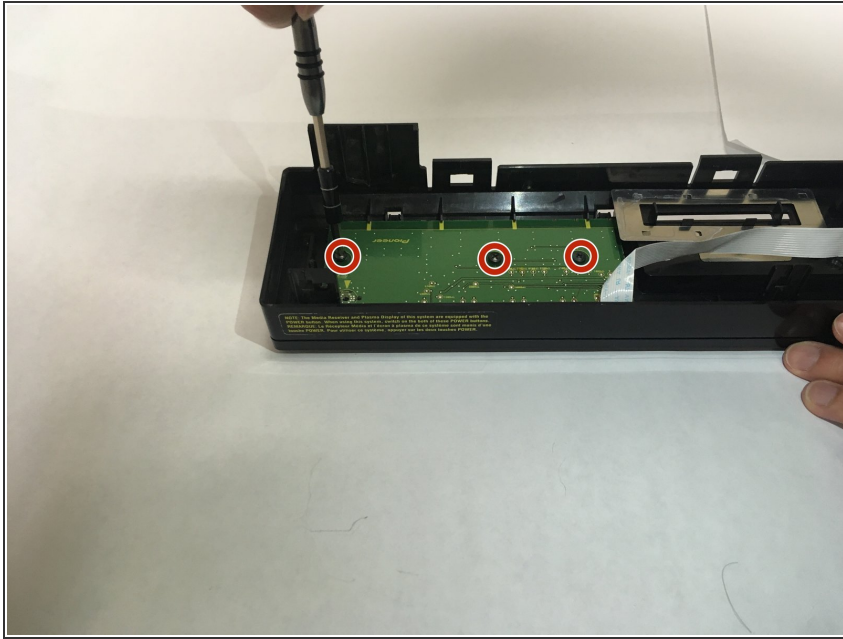
- i** The connectors on the bottom of the device may be very stiff and could require the use of a plastic prying tool.
- Carefully flip the device over and unlatch the three plastic connectors that hold the front panel to the bottom of the device casing.

Step 6



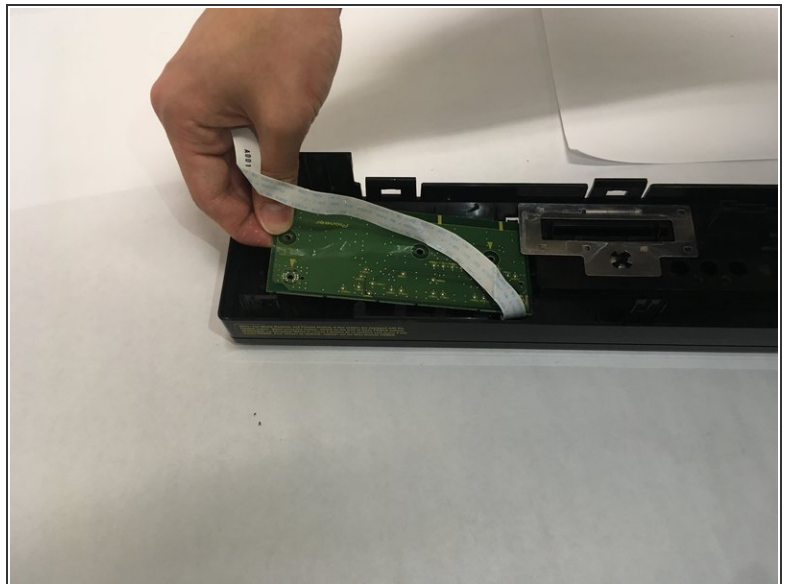
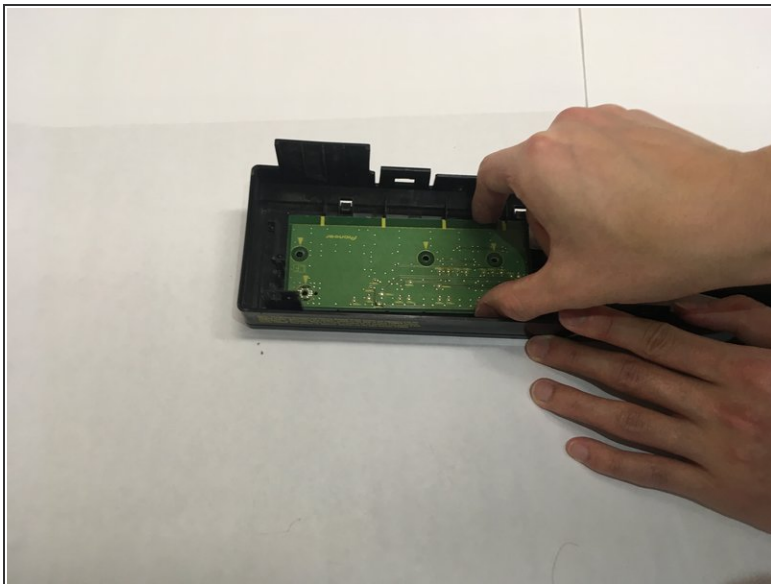
- Grip and unplug the ribbon connector that connects the front circuit board to the device.

Step 7



- Unscrew the three 1/4 Phillips head screws on the back of the front circuit board.

Step 8



- Grip the circuit board and slide towards the front side of the plastic casing.
- Lift upwards to remove the circuit board from the front panel.

To reassemble your device, follow these instructions in reverse order.