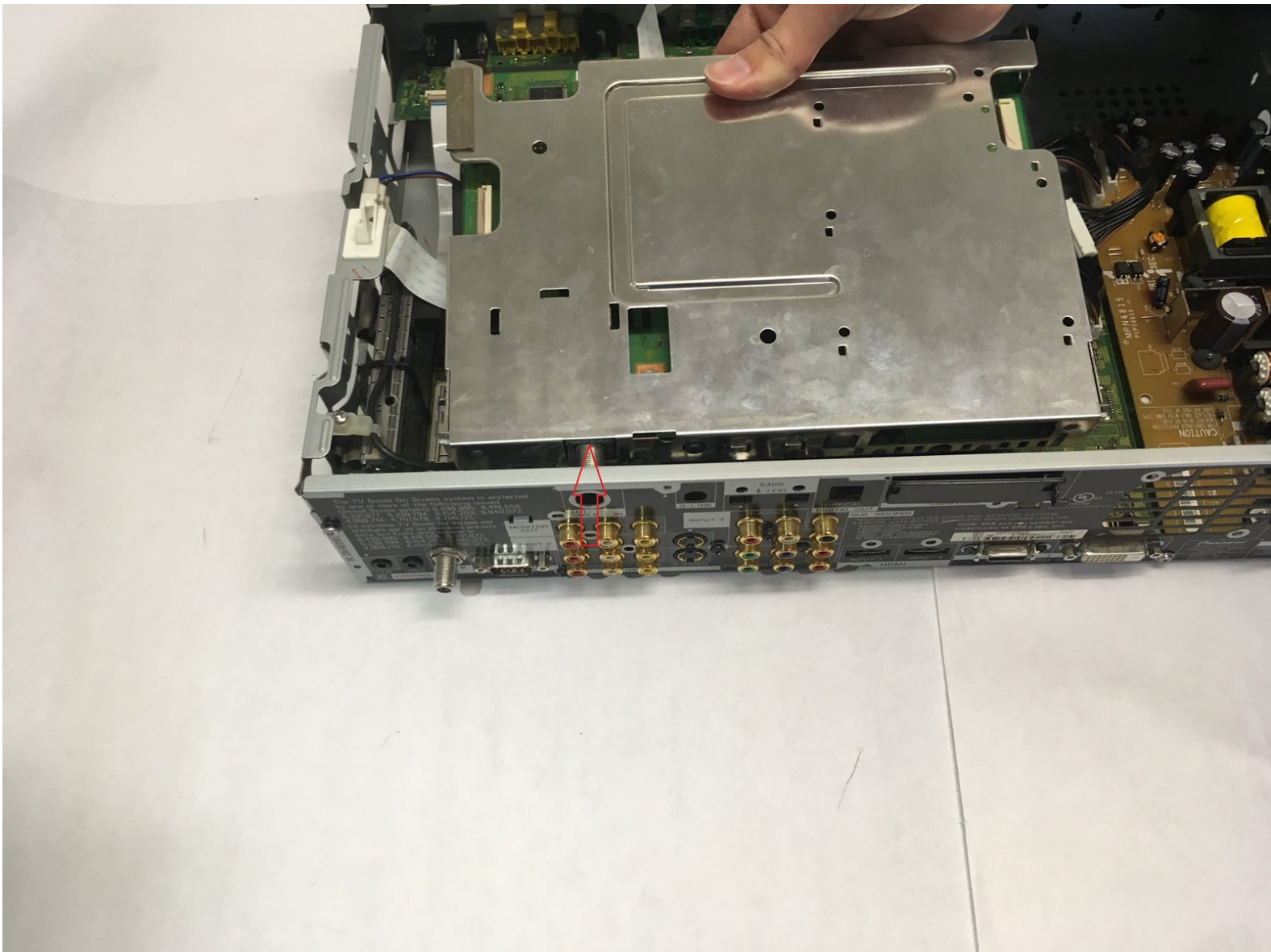




# Pioneer Elite PRO-RO6U Optical Drive Replacement

Replacing the media receiver's optical drive may resolve issues with fuzzy or missing image quality.

Written By: Cody Carter



---

## INTRODUCTION

Water damage or a faulty electrical component on the optical drive may prevent the Pioneer Elite Pro-R06U from properly displaying an image on the television. Replacement may be necessary to get the receiver back in working order.



### TOOLS:

- [Phillips #1 Screwdriver](#) (1)
-

## Step 1 — Optical Drive



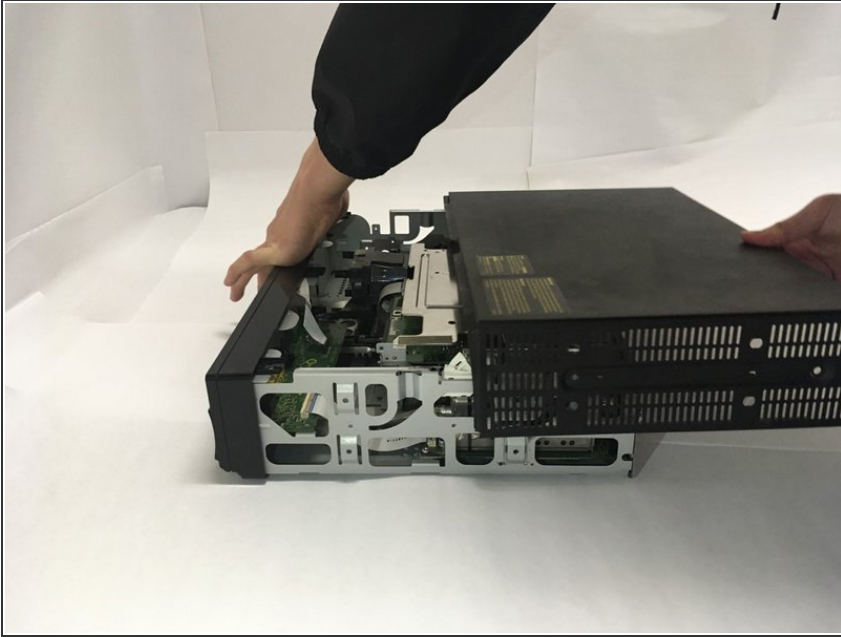
- Remove the two 6.4 mm Phillips screws on each side of the device's casing.

## Step 2



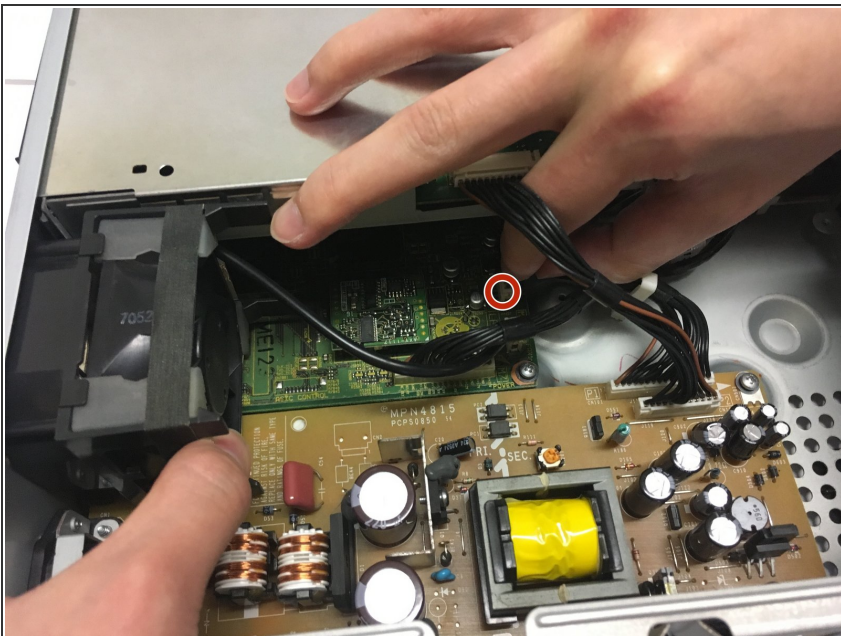
- Remove the two 6.5 mm Phillips screws on the back of the device casing.

### Step 3



- Grip the front panel in one hand and the back of the casing in the other. Pull the casing back, and slide it up and away from the inner box.

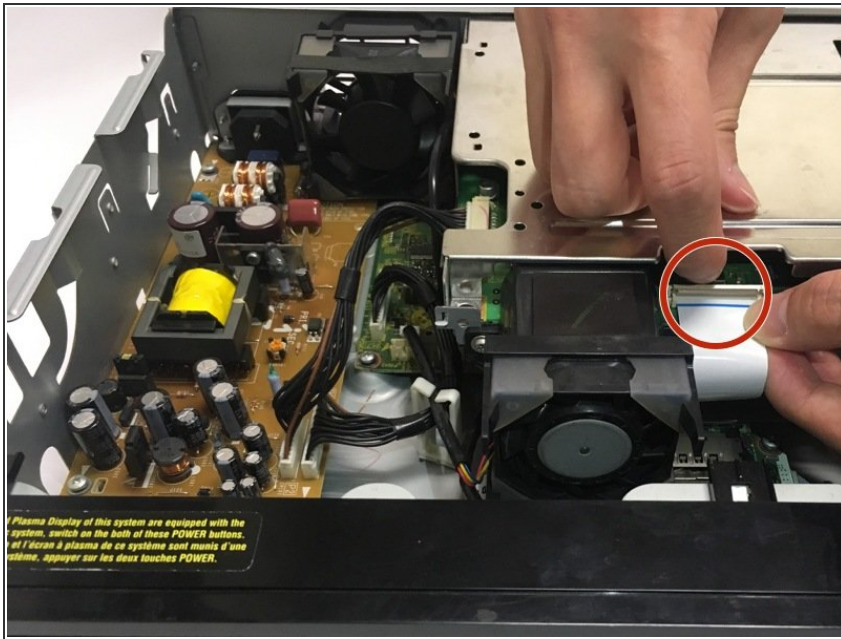
### Step 4



- Remove the optical drive cooling fan by gripping the ribbon connector at M11 and gently remove by pulling away from the slot.

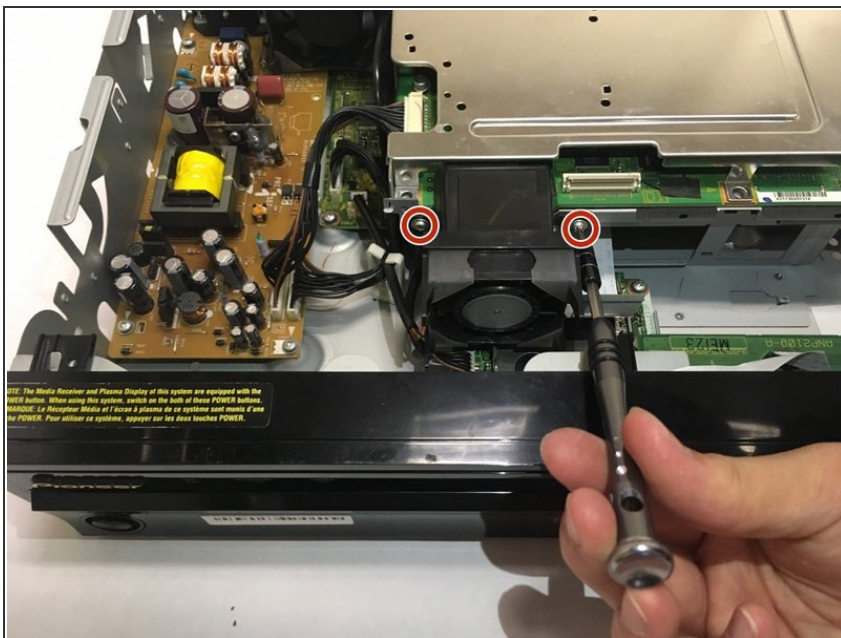


## Step 5



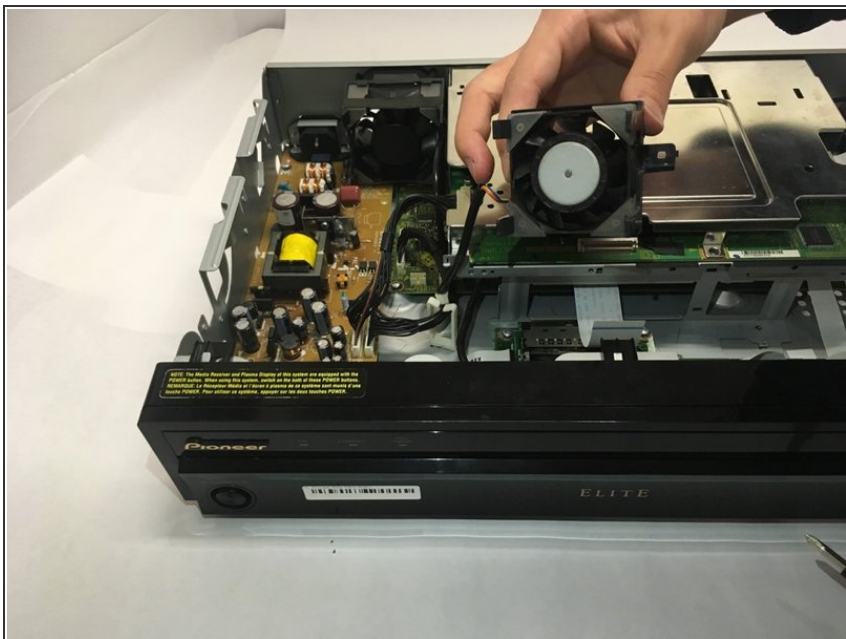
- Flip the latch on the ribbon connector upward to allow for cable removal.
- Grip the ribbon cable and remove by gently pulling away from the unlatched connector.

## Step 6



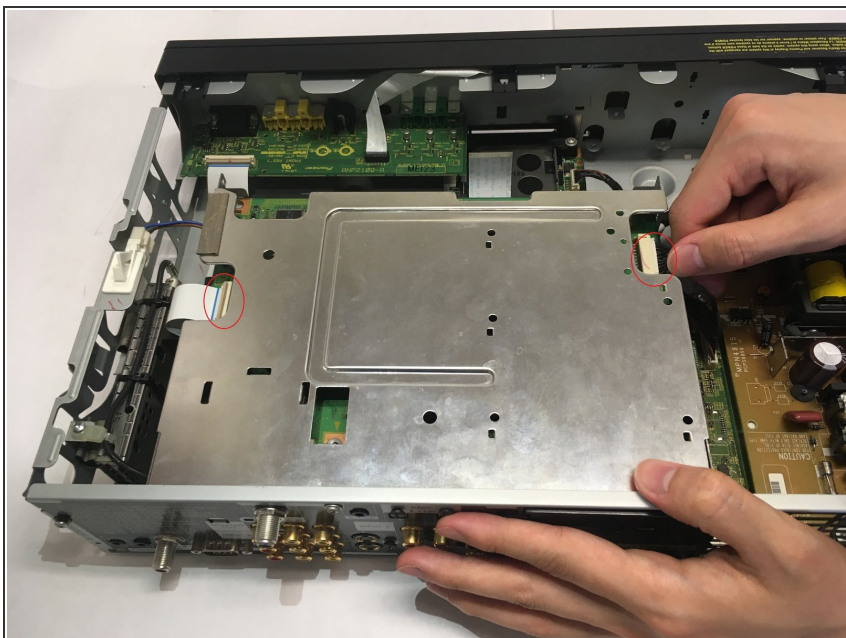
- Remove the two 6.4 mm Phillips mounting screws on the optical drive cooling fan.

## Step 7



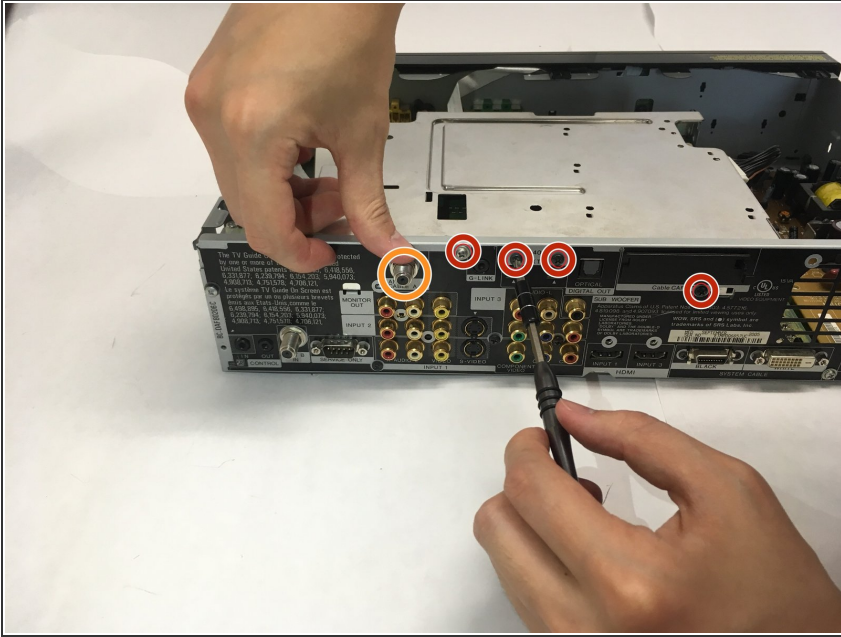
- Grip the frame of the cooling fan and slide it toward the front panel, then lift out of the device.

## Step 8



- Unplug ribbon cables D4 and D5. To unplug D4, flip the gate up and pull the ribbon away.

## Step 9



- Remove four 1/4th inch Phillips screws on the back of the casing.
- Unscrew and remove the nut from the threaded connector.

## Step 10



- ⚠ The optical drive is still connected by a cable on its bottom side, lift the drive upwards only slightly when first removing from the casing.
- Pull the optical drive toward the interior of the device and then lift upwards, then pull to remove the cord on the bottom left corner before removing the drive completely.

To reassemble your device, follow these instructions in reverse order.