



Pioneer Elite Smart Speaker F4 LED Light Ring/Button Panel Replacement

This guide will help you replace the LED light ring and button panel, which may need to be replaced if the buttons or light ring do not work.

Written By: Isaiah Abrea



INTRODUCTION

This guide will walk you through replacing the LED light ring and button panel. To completely separate the two from the device, you may need to know how to solder and desolder connections.

TOOLS:

- [Phillips #2 Screwdriver](#) (1)
 - [Metal Spudger](#) (1)
 - [Utility Knife](#) (1)
-

Step 1 — Fabric Casing



- Flip the speaker upside down with the back panel of plugs pointed away from you.

Step 2



- Use the metal spudger to pry off the rubber bottom cover. It will be glued onto the bottom of the speaker.
- Work the rubber cover off by slowly going all the way around with the metal spudger, applying as much force as needed.
- ⓘ Since the cover is glued, a heat gun at low temperature or a hair dryer may be useful to speed up the process. However it is not required in this step.

Step 3



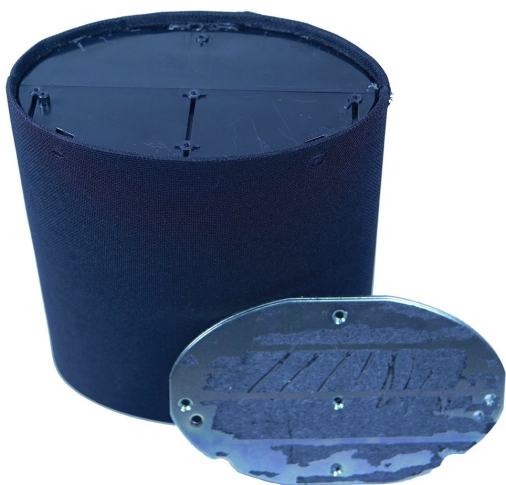
- Scrape most of the glue away to reveal the five flathead screws - four around the outside, and one in the middle.

Step 4



- Remove the five 6 mm screws with a Phillips #2 screwdriver.


Step 5



- Lift off the metal plate. It will be surprisingly heavy and it is approximately 1cm thick.

Step 6



 This step requires permanently damaging the casing of your device.

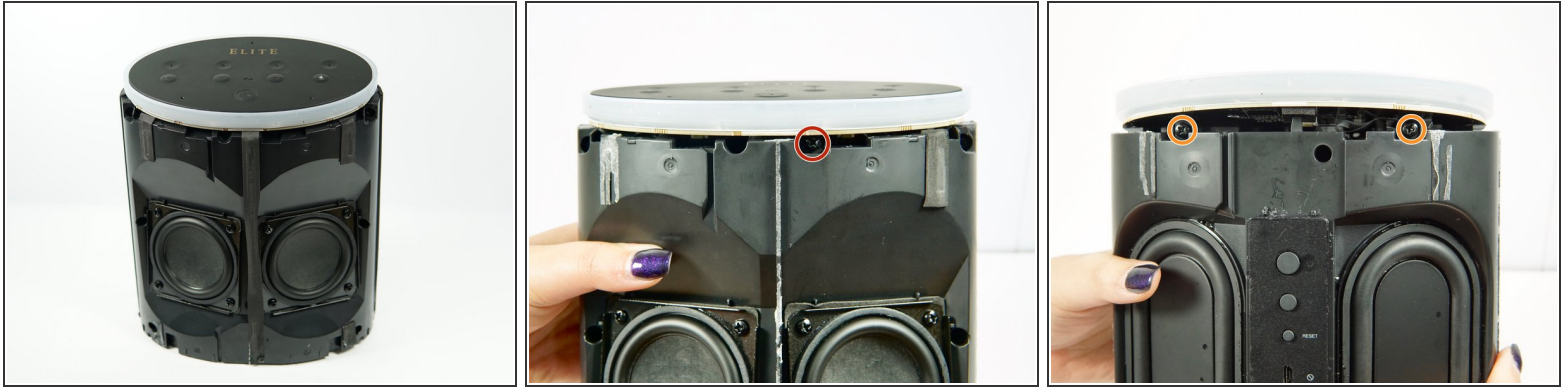
- Turn the speaker counter-clockwise 90 degrees.
- Use a knife to cut along the left seam all the way down the length of the device.

Step 7



- The casing should be easily removed by prying and lifting it off.
- ⓘ If the casing gets caught on the back panel of plugs, use the metal spudger to lift the casing away from the panel, working all the way around. Pay special attention to the bottom, where it may be stuck with glue.

Step 8



- Flip device 180 degrees so the light ring/button panel is on top with the 'Elite' facing you.
- Remove one 6 mm screw with a Phillips #2 screwdriver.
- Spin the device so the opposite side is facing you.
- Remove the two 6 mm screws with a Phillips #2 screwdriver.

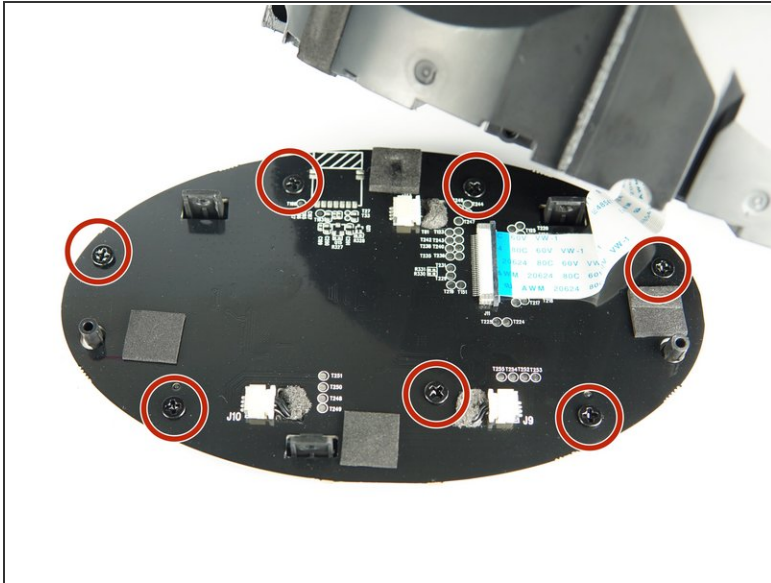
Step 9



- Carefully remove the top panel, light ring, button panel, and the corresponding board.

⚠ Do not pull too hard, as there is a strip of wiring connected to the part below that could tear if pulled too hard or too far away.

Step 10 — Button Panel Circuit Board



- Lay the speaker down flat to make it easier to work on.
- Remove the seven 4 mm screws with a Phillips #2 screwdriver.

Step 11



- Lift up the panel and remove it from the device.
- ⓘ Desoldering may be required to separate the circuit board completely. Please use our [How to Solder and Desolder Connections Guide](#) to properly and safely conduct this procedure.

Step 12 — LED Light Ring/Button Panel



- Gently pry the plastic light ring from the circuit board and button panel.
- ⓘ Desoldering may be required to separate the light ring and button panel completely. Please use our [How to Solder and Desolder Connections Guide](#) to properly and safely conduct the procedure.

To reassemble your device, follow these instructions in reverse order.