



Pioneer R1 LCD Display Replacement

This guide will lead you through the steps necessary to replace the R1's LCD display.

Written By: Christopher Rosario



INTRODUCTION

This guide will walk you through the process of accessing and replacing your R1's LCD display.



TOOLS:

- [Spudger](#) (1)
 - [Phillips #00 Screwdriver](#) (1)
-

Step 1 — LCD Display



- Insert your plastic spudger in the opening near the HDMI port.
 - Gently pry the back cover of the R1 from the front by using the spudger along the edges.
- ⚠ Do not pull the back cover straight off the R1 as components of the speakers will be attached to both sides.

Step 2



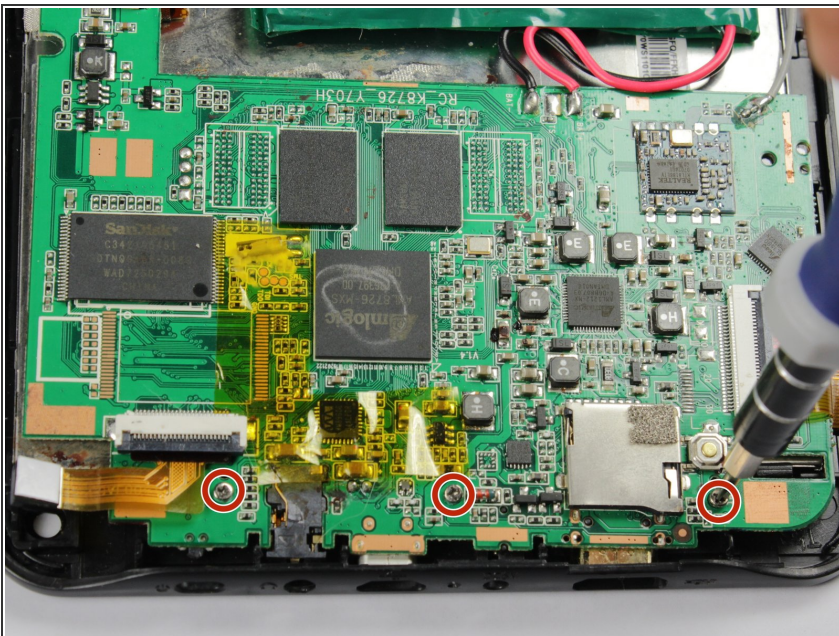
- Lay the R1 flat like an open book.
- ⓘ This will prevent the speakers from becoming disconnected from the motherboard.

Step 3



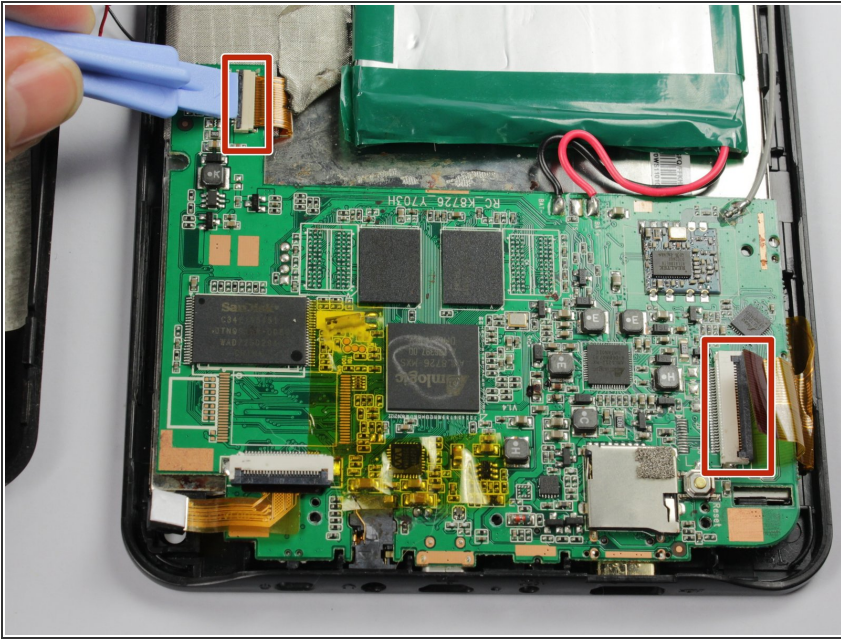
- Remove the tape that is holding the motherboard to the display and covering the cable attachments.
- Peel back just the end of this tape to free the front facing camera.

Step 4



- Remove the three 4 mm screws along the base of the motherboard with a Phillips #00 Screwdriver.

Step 5



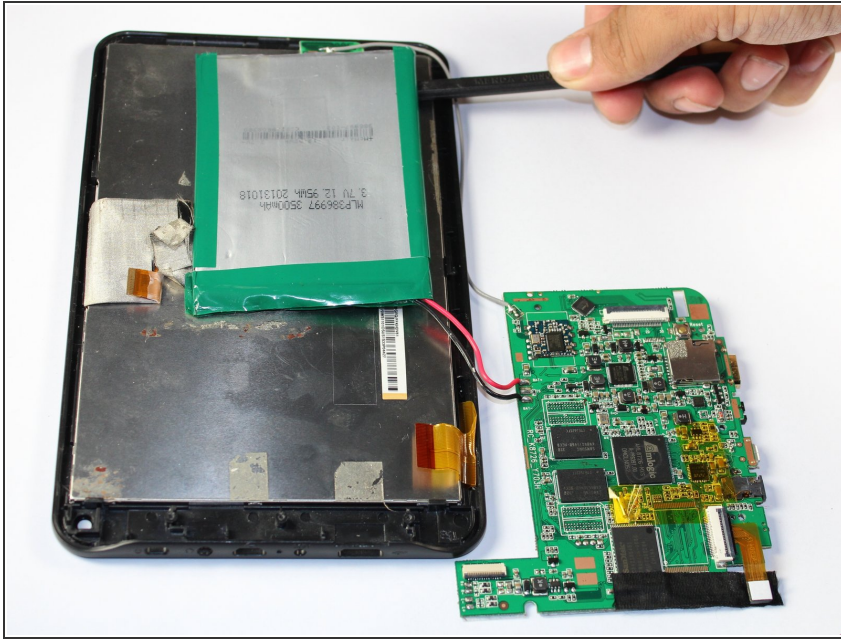
- Disengage the two cable locks using your spudger or your finger nail.
- Slide the cable free from the disengaged lock.
- ⚠ Do not pull across the cables as this may tear and permanently damage it.

Step 6



- Insert your spudger between the LCD display and the touch screen.
- Gently pry the LCD display from the the touchscreen by using the spudger along the edges.
- Once disengaged, remove the LCD display from the touchscreen.

Step 7



- Slide a strong thin object, like a thin spudger, between the battery and the display.
- Slide the object along the length of the battery to remove it from the display.

⚠ The adhesive holding the battery in place is strong and the battery is quite soft. Take care not to break open the battery.

Step 8



- Carefully pry off the component that is taped to the LCD display at the top of the R1.

To reassemble your device, follow these instructions in reverse order.