



# Pioneer Steel Wheels Aluminum Plates Replacement

Removing the aluminum plates from the Pioneer Steel Wheels Headphone.

Written By: Garrett Leung



---

## INTRODUCTION

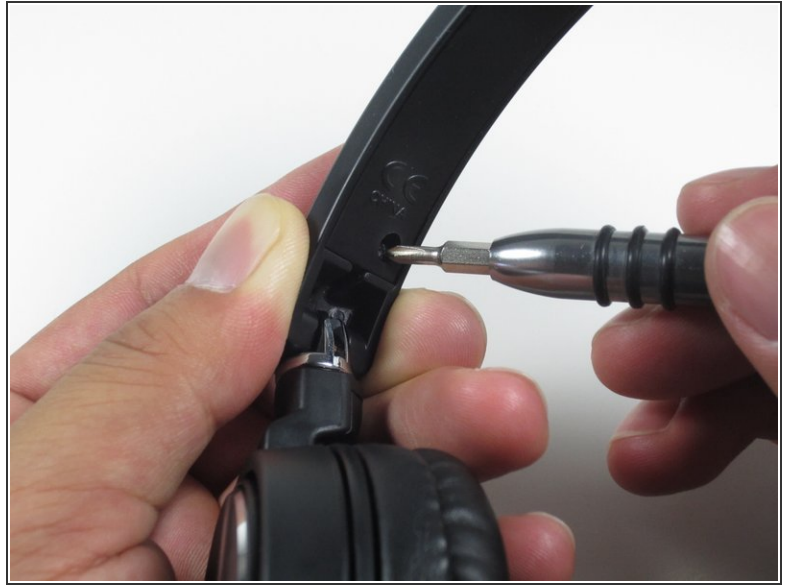
This guide will show you the steps to remove the aluminum plates.



### TOOLS:

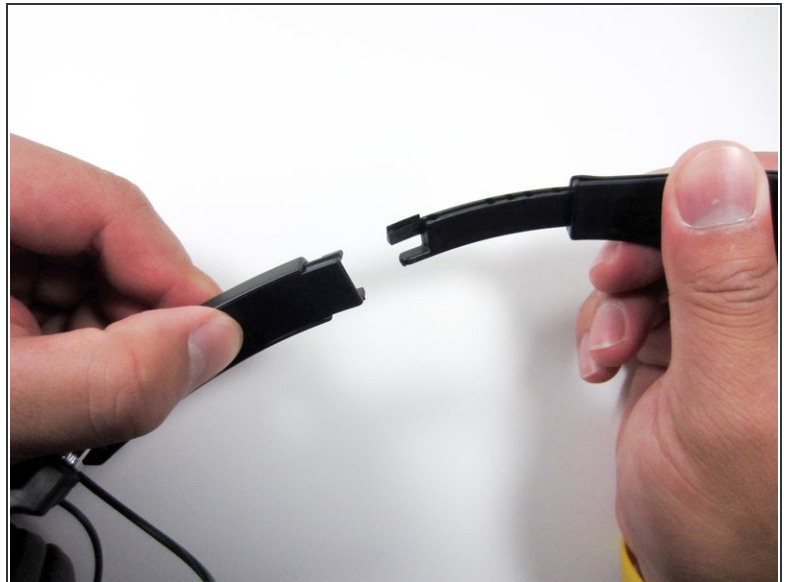
- [Phillips #0 Screwdriver](#) (1)
-

## Step 1 — Headband



- Remove the two screws on the underside of the headband with the PH0 Phillips screw driver.

## Step 2



- With the headband fully extended, hold the base of the headband with one hand and with your other hand, hold the top of the headband.
- With force, pull upwards.

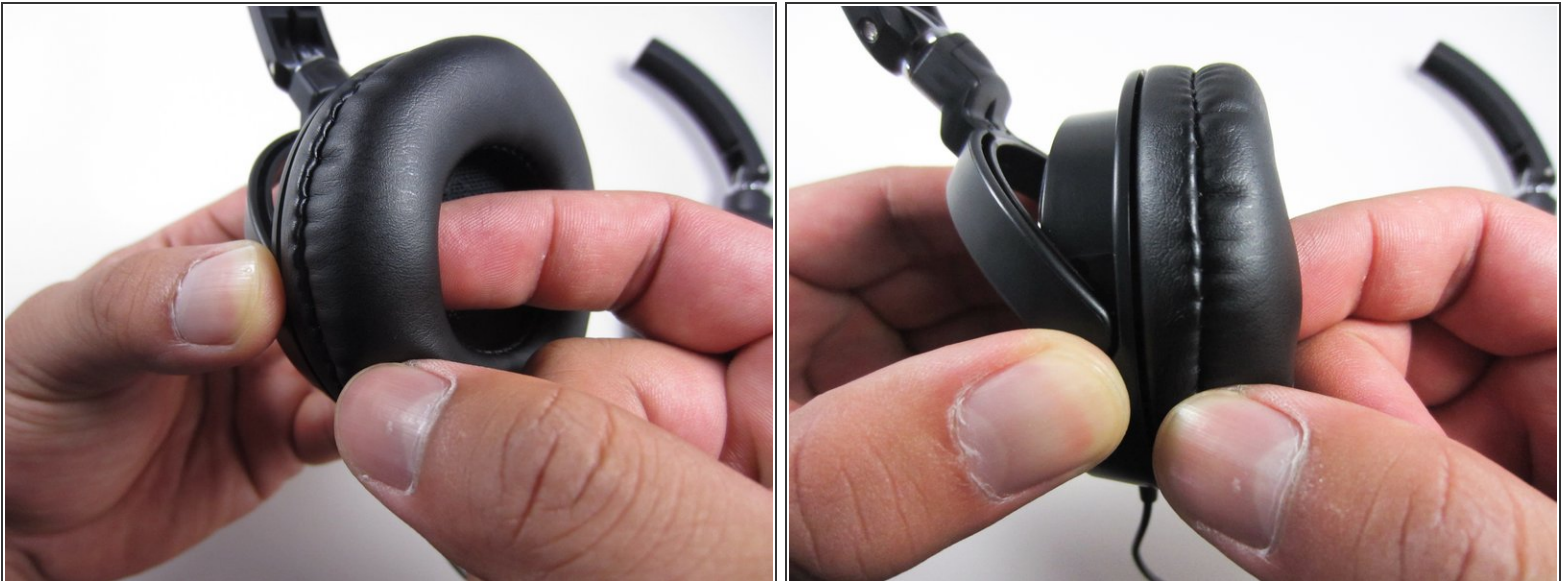


### Step 3



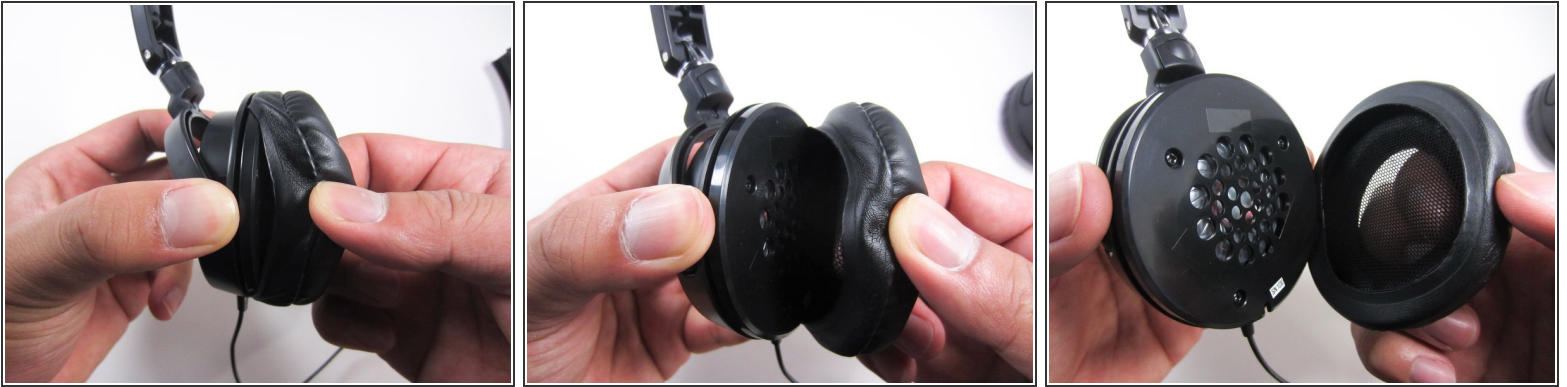
- Remove the rail-piece that is now sticking up by pulling it up and out of the headphone.
  - Repeat on the opposite side and the headband will be released.
- ☒ During reassembly, make the sure the rail-pieces match their respective sides so the headband reinserts properly.

### Step 4 — Foam Ear Pads



- While holding the base of the ear cup with one hand, insert your index finger from your other hand into the inside of the foam ear piece.

## Step 5



- With slight force, peel the foam ear pieces away from the ear cup.
- i* Make sure to pull out the foam ear pieces slowly. Pulling on them fast will tear the leather wrapping.
- Repeat for the opposite side if necessary.

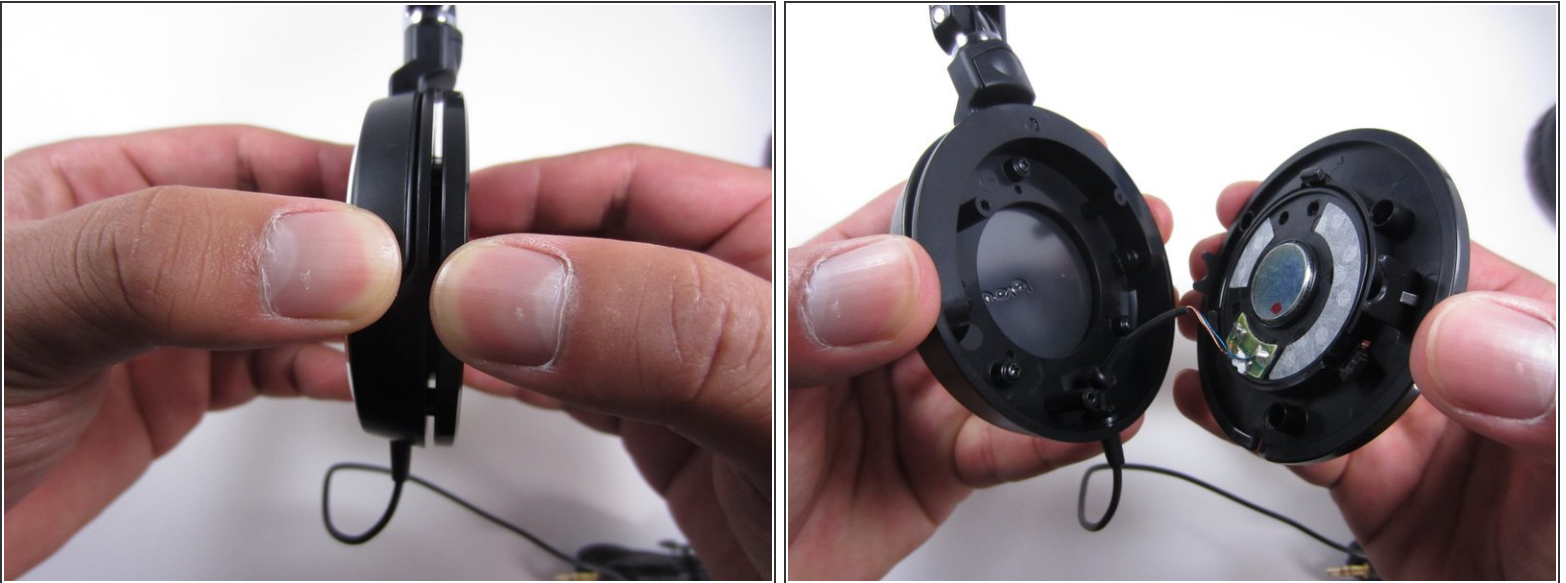
## Step 6 — Drivers



- Remove the three screws located on the driver cover of the ear cup with the PH0 Phillips screw driver.



## Step 7



- Pull the driver cover away from the headphone.
- ⓘ Do not pull the driver cover away too fast since there are wires connecting the driver to the ear cup.
- ✦ During reassembly, make sure the two wires are pointing downward before screwing the driver back in.

## Step 8 — Aluminum Plates



- Remove the three screws located on the driver casing.

## Step 9



- With your thumb, push the middle of the aluminum piece outwards while holding the ear cup base with your other hand.

✦ During reassembly, make sure the aluminum plates line up with the holes for the screws.

To reassemble your device, follow these instructions in reverse order.