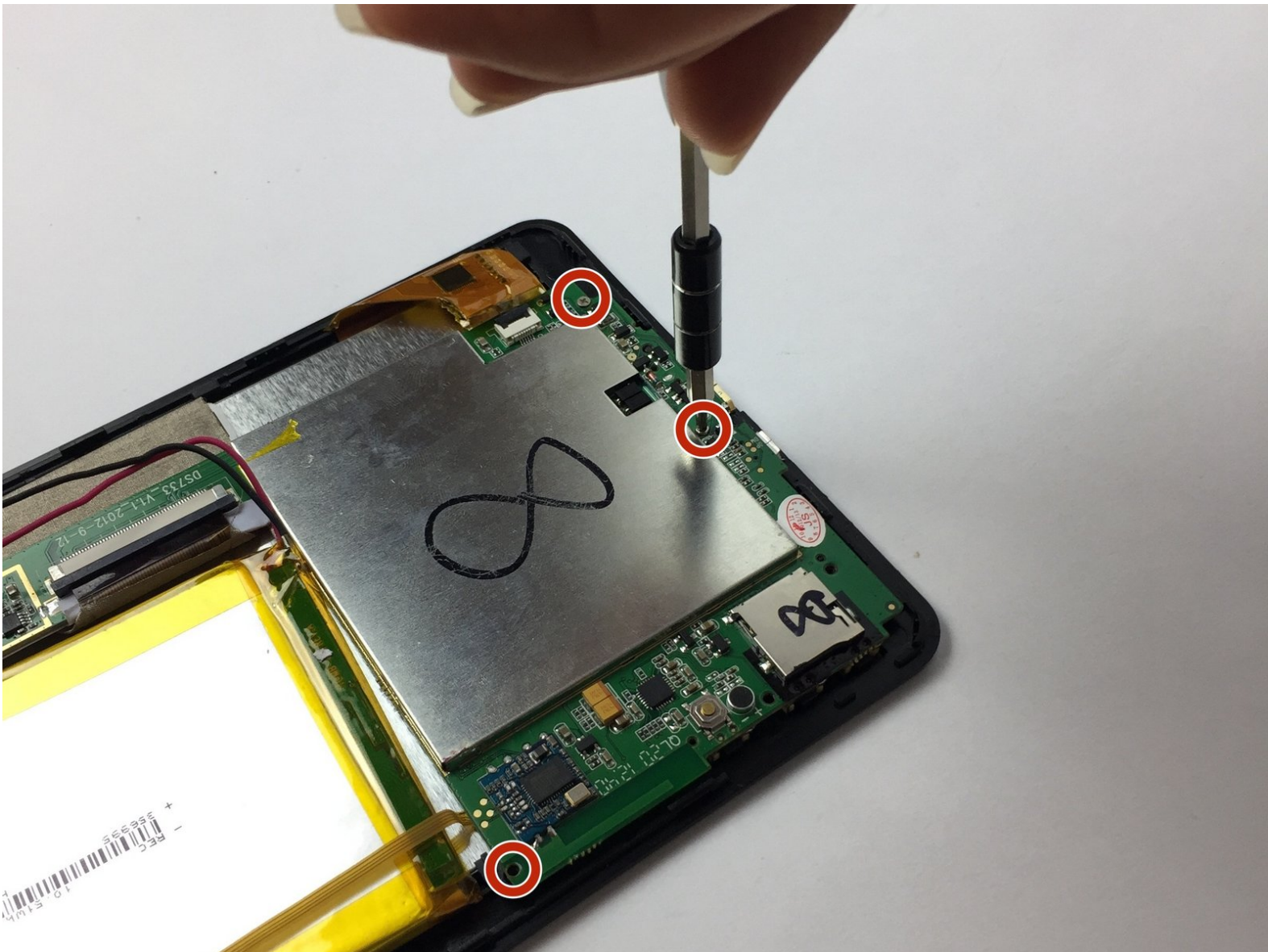




# Pipo Smart S1 Screen Replacement

Use this guide to replace Pipo Smart S1 Screen.

Written By: Ali Alqallaf



# INTRODUCTION

Use this guide to replace the display screen of your Pipo S1 Tablet. Replacing the display screen is pretty simple by following the following steps and using iFixit tools.

---

## TOOLS:

- [Phillips #0 Screwdriver](#) (1)
  - [Heavy-Duty Spudger](#) (1)
  - [Phillips #00 Screwdriver](#) (1)
  - [iFixit Opening Tools](#) (1)
-

## Step 1 — Battery



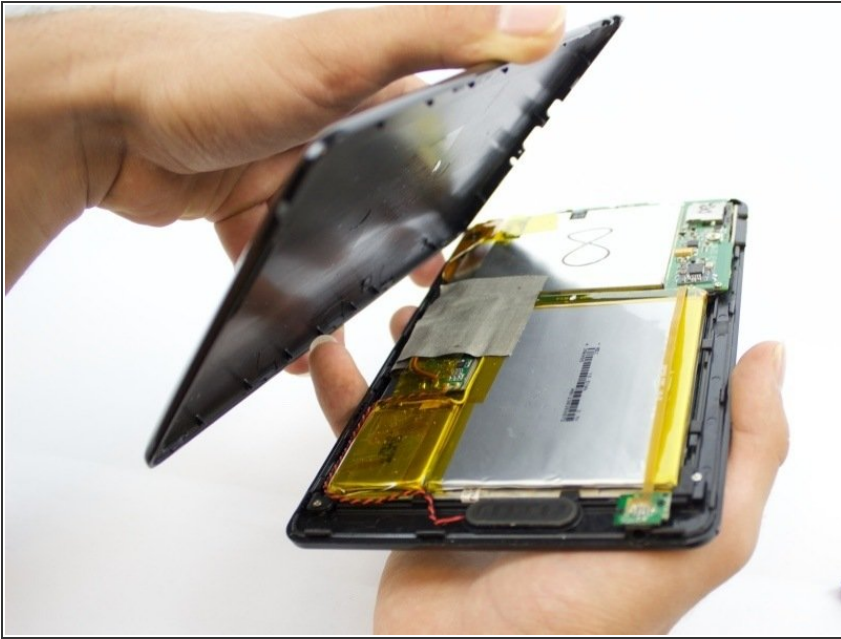
- Insert a blue plastic spudger in the middle of the two bodies of your Pipo S1 at the bottom of the device where the charging port is.

## Step 2



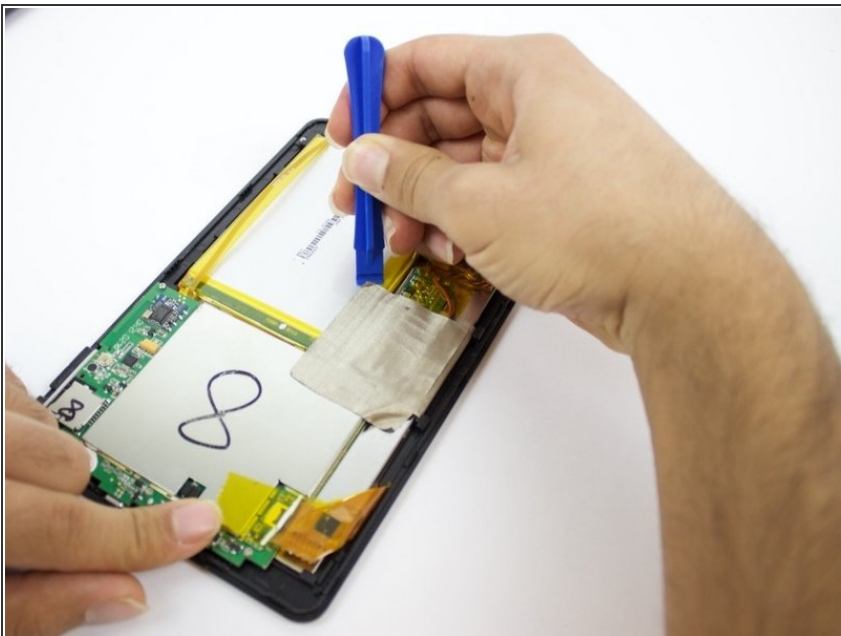
- Use the same Spudger and slide it along the gap you are creating , moving to the right direction against the mini usb port.

### Step 3



- Gently pry the body of the Pipo and pop the back cover open. Lift the back cover of the device and place it on the side.

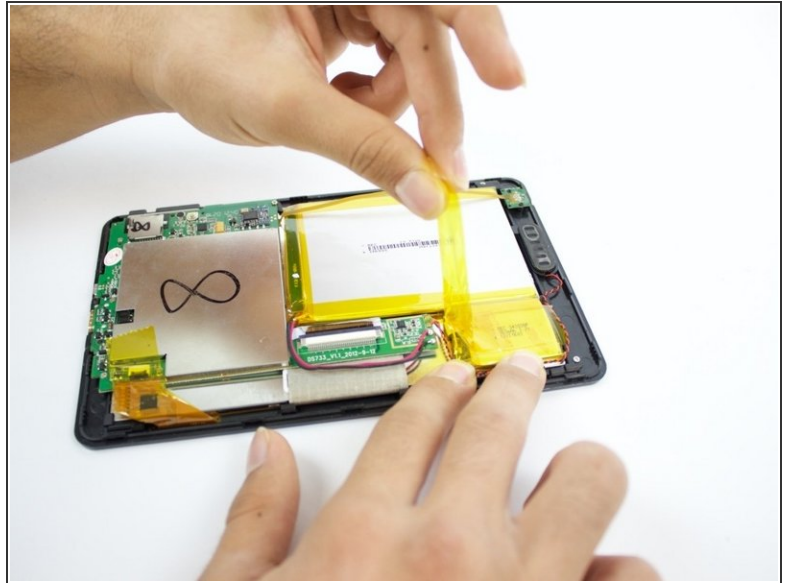
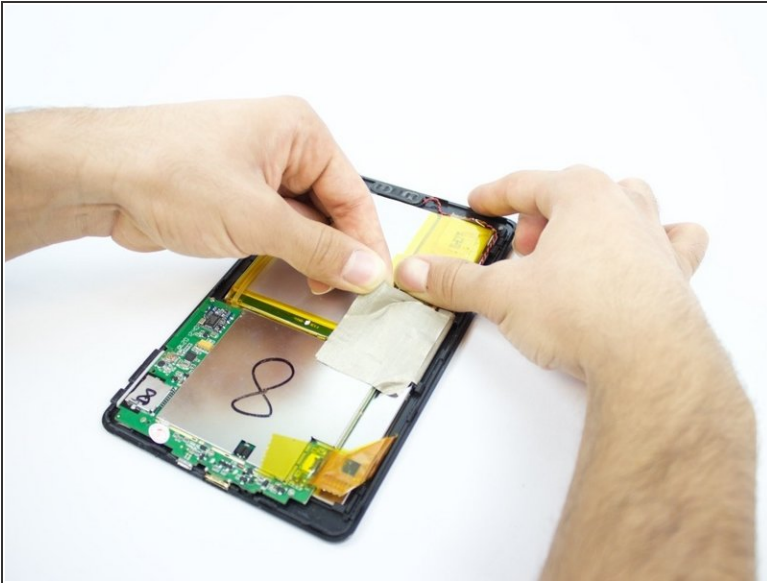
### Step 4



- Lift the edge of the white tape with the plastic opening tool.

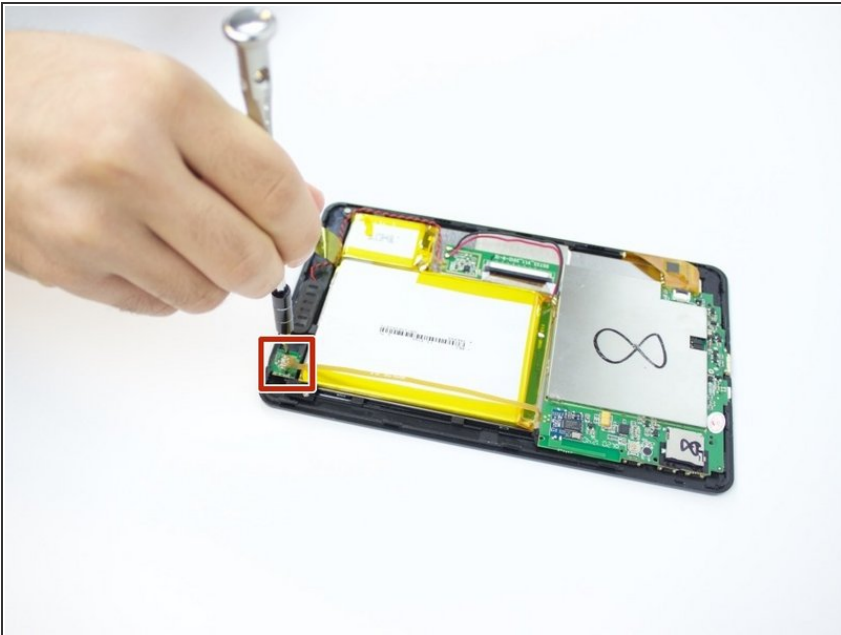


## Step 5



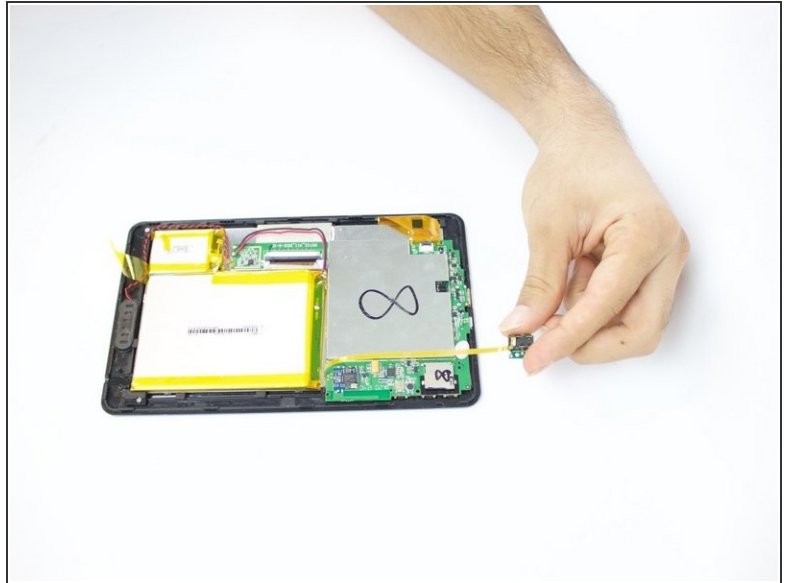
- Lift the white tape with your fingers and then lift the yellow tape holding the extension of the battery.

## Step 6



- On the bottom of your tablet, take your J000 screwdriver and take out the two 3mm screws out.

## Step 7



- Focus on the Headphone Jack as we will work on it. Lift it and move to the other side placing it on the surface you are working on.

## Step 8



- Pry the battery using the Spudger to detach it from the glue underneath it.

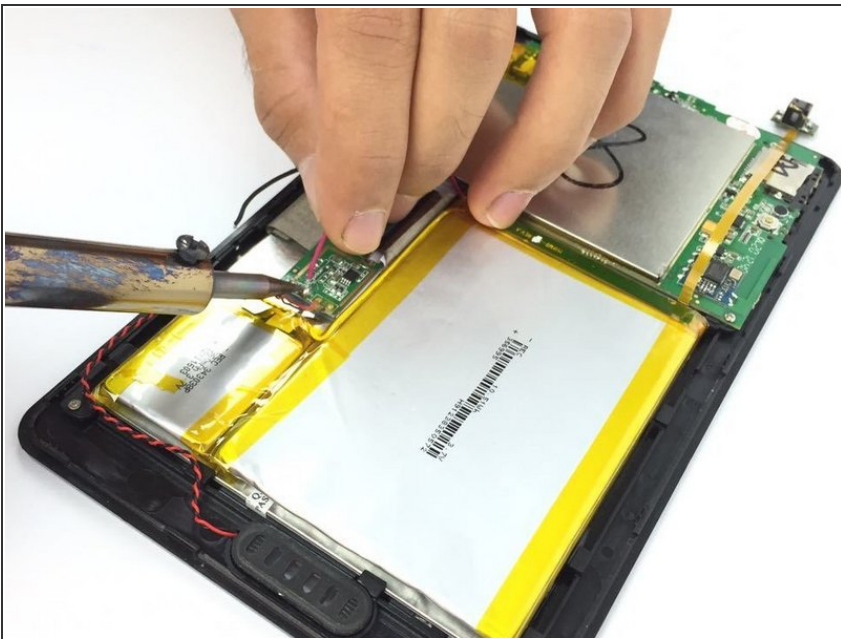
⚠ Be careful not to pinch the battery (Lithium batteries are great hazard and are prone to short circuit and thus burning or/and exploding).

## Step 9



- Lift the battery and place it a little further from the positive and negative battery wires.

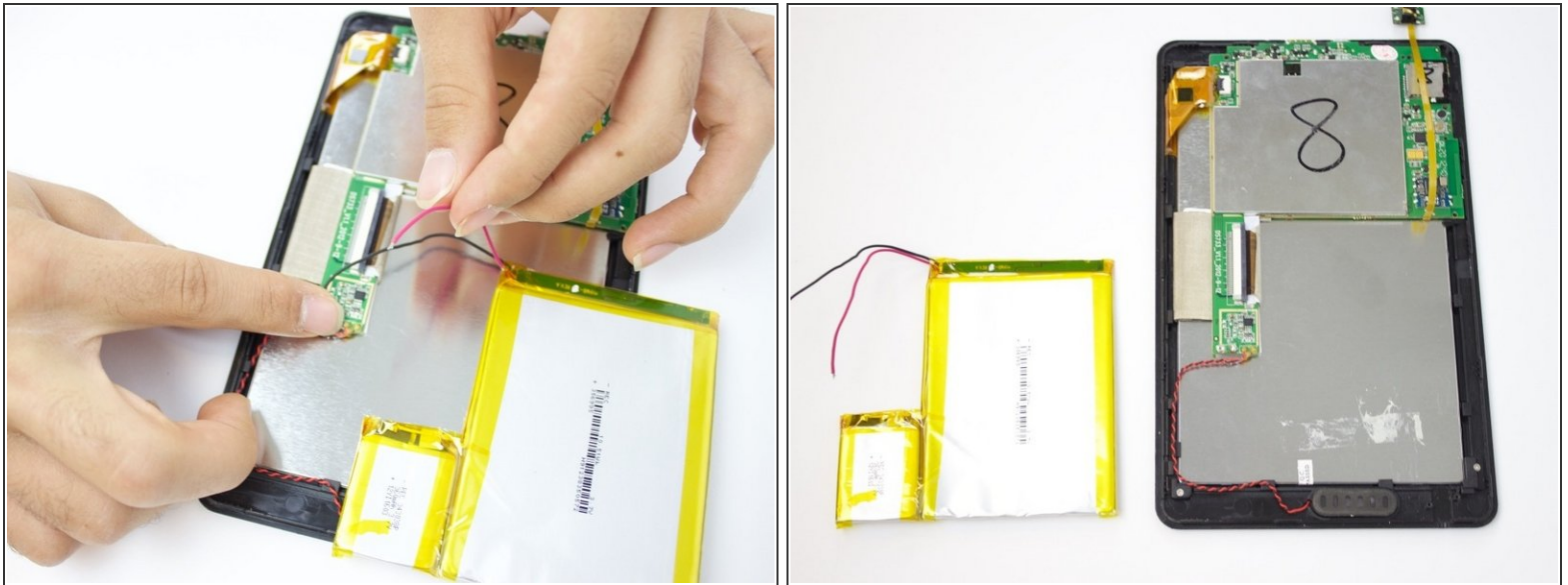
## Step 10



- Using your soldering iron, melt the two lead spots to detach the wires.
- ⚠ the soldering iron is extremely hot, handle with caution. Always keep the soldering iron holder next to you when using it so you can return it back on the holder.



## Step 11

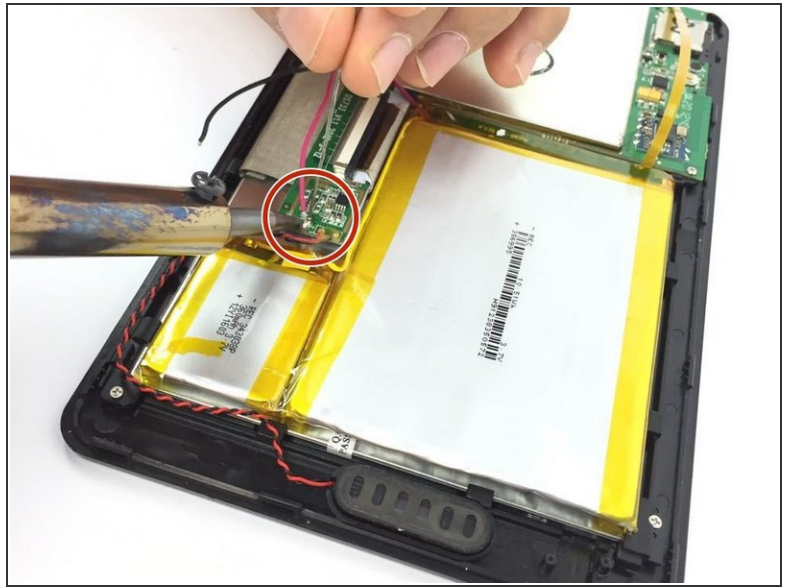
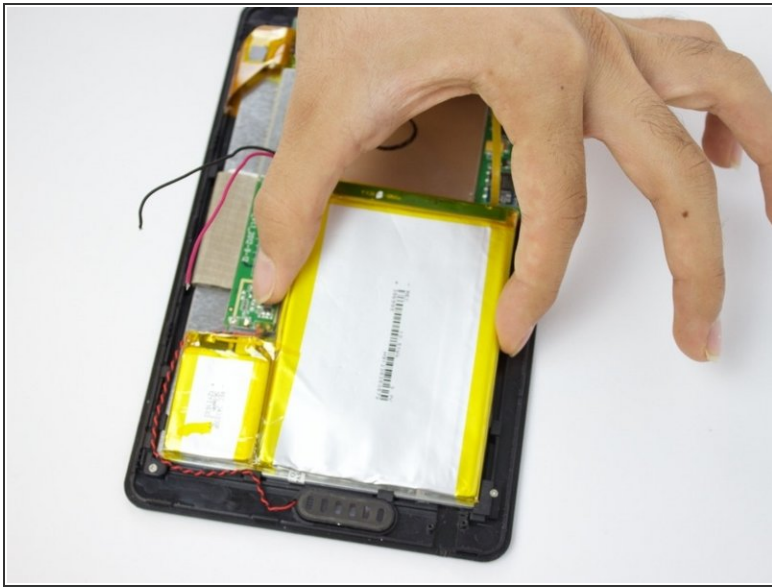


- Remove the two wires. Then remove the battery completely from the device.

⚠ Beware to tape the negative and positive battery wires to keep them from short-circuiting.



## Step 12



- Place your new battery in the tablet.
  - Solder the positive and negative battery wires to the board.
- ⚠ Beware to solder the right pole to the right spot on the circuit board as swapping them can burn the motherboard.

## Step 13



- Reinstall the holding down tape and make sure everything is back in place.

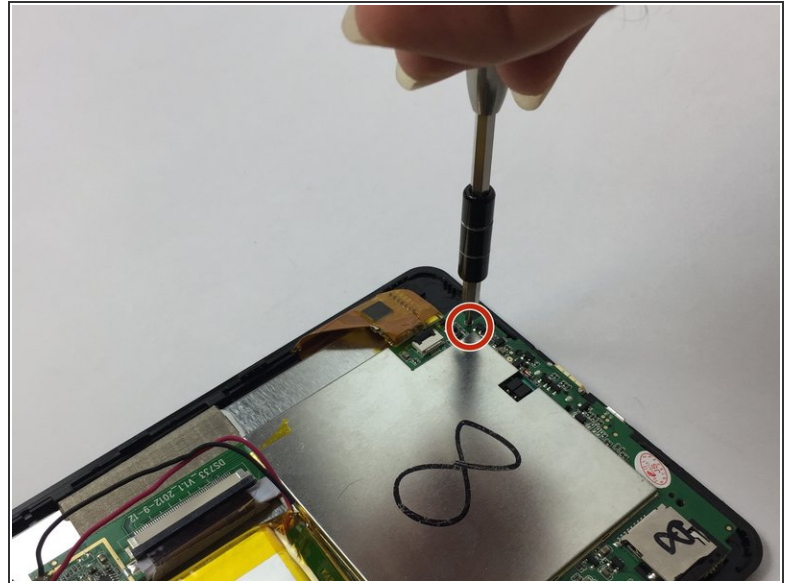
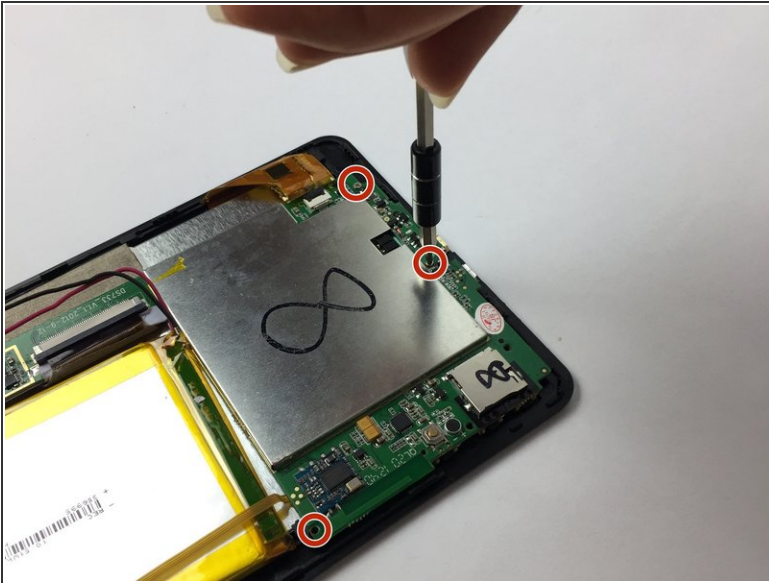
## Step 14



- Attach the back cover and press on it until it clicks.

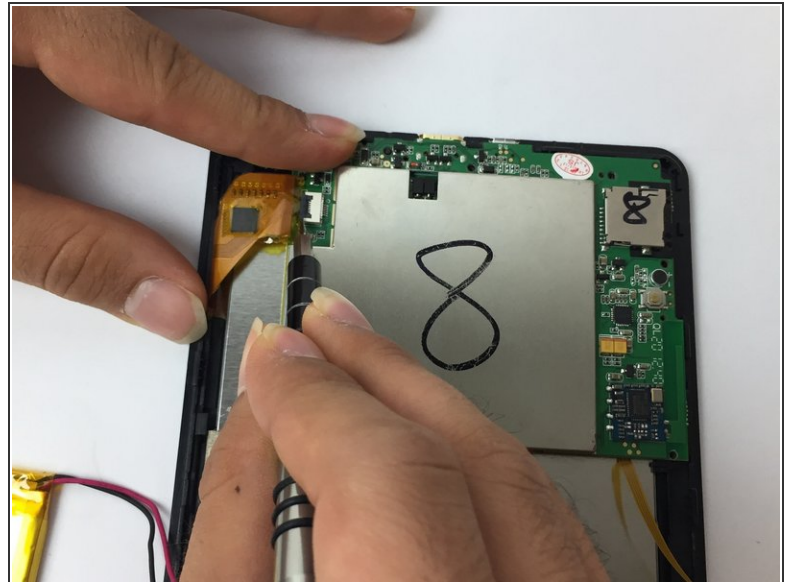
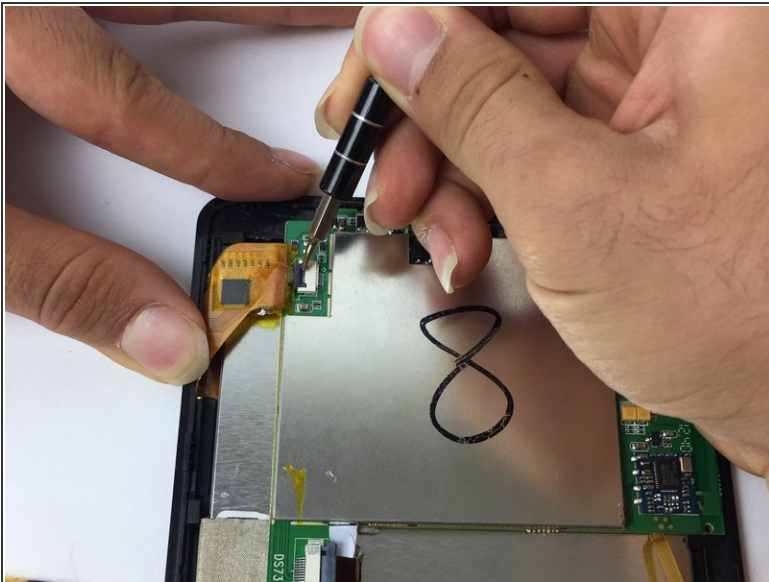


## Step 15 — Screen



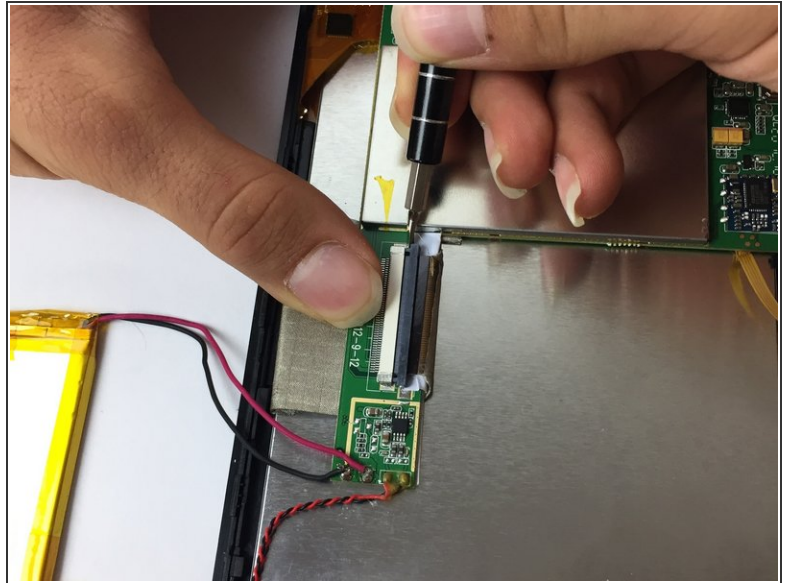
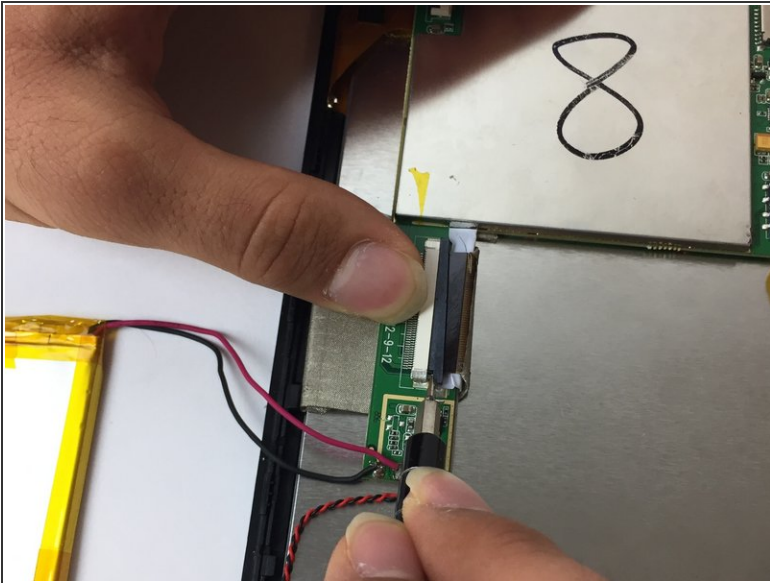
- On the bottom of your tablet, take your J000 screwdriver and take out the three 3mm screws that hold down the motherboard.

## Step 16



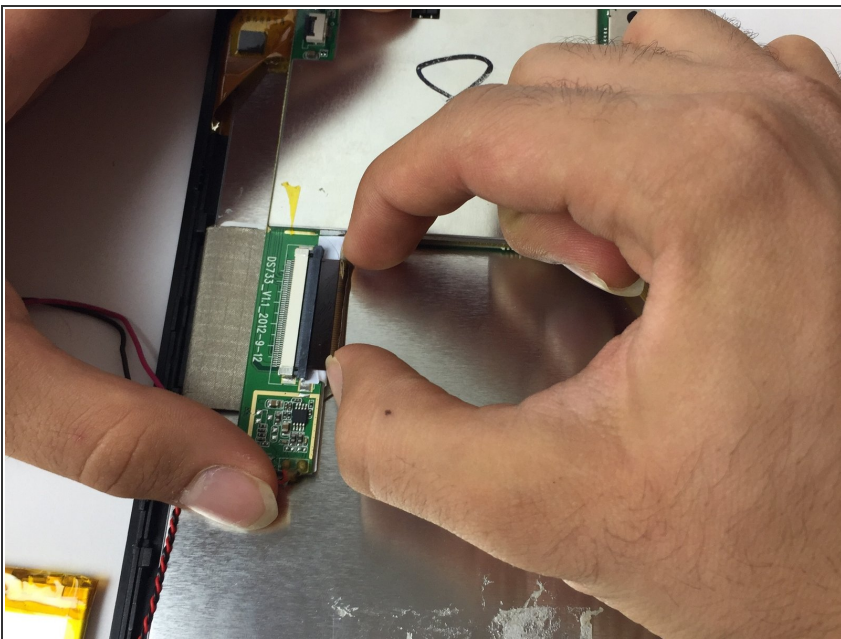
- Locate the orange connection strip that connects the motherboard to the display screen. Use your J001 to pry the connector off.

## Step 17



- Take your J001 screwdriver and carefully push out the cable ribbon alternating on both sides.

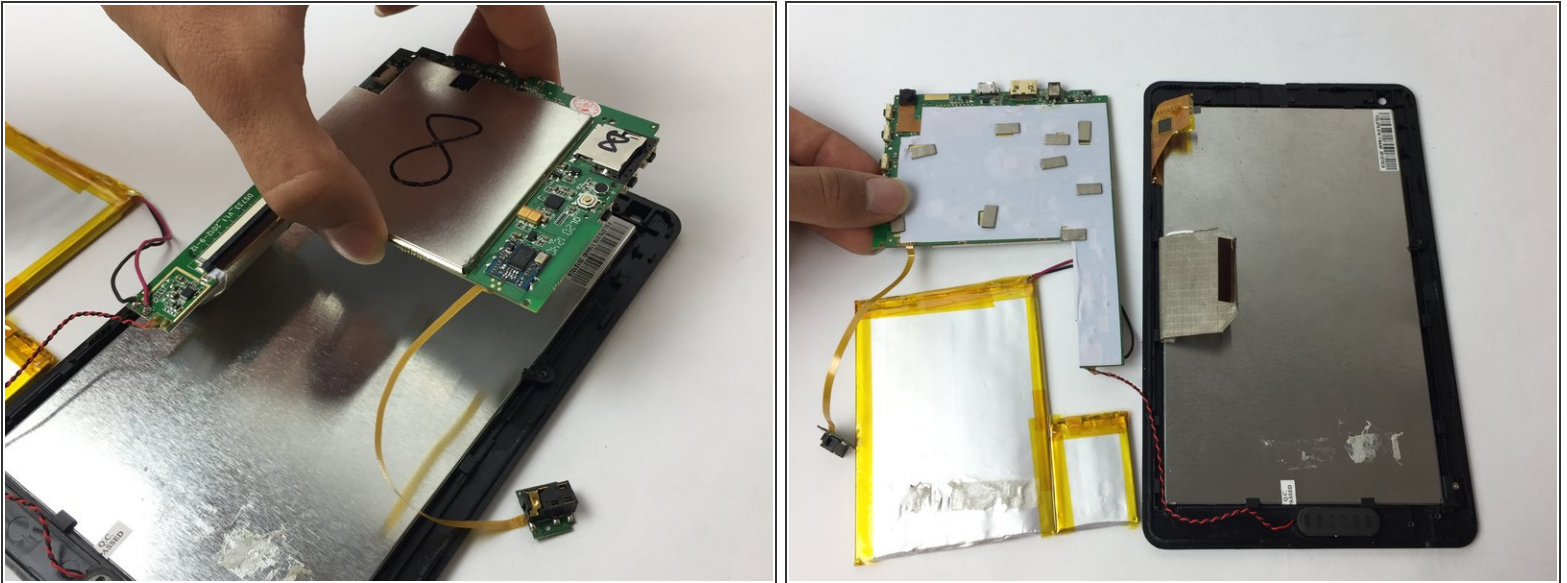
## Step 18



- After you loosened the cable ribbon with your J001 screwdriver, pull it out with your fingers.



## Step 19



- After the motherboard is freed from screws and connections, now you can lift it with two fingers and slowly place it next to your device front cover that holds the display screen.

⚠ The speaker connection that is on the front cover of your device is still attached to the motherboard; therefore place the motherboard close to the front cover.

## Step 20



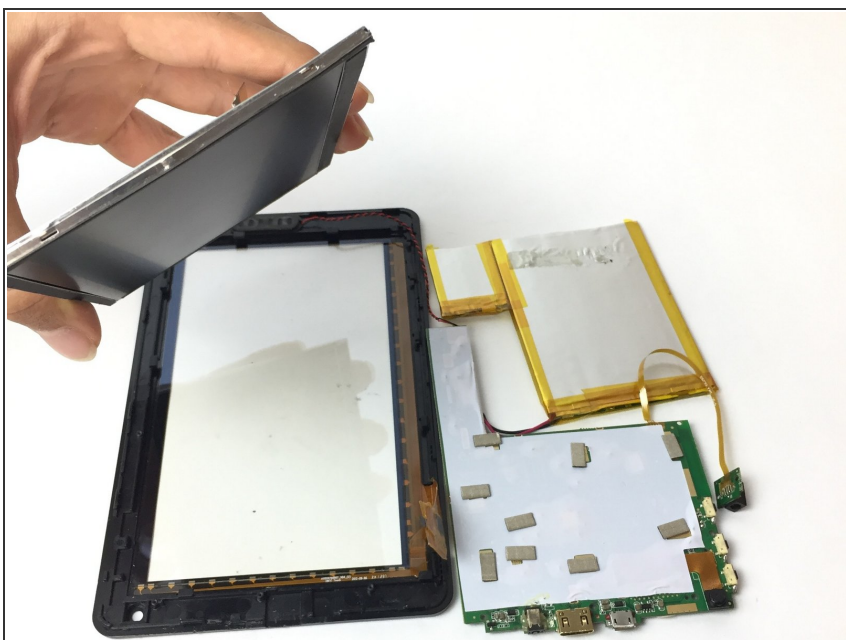
- Take you J000 screwdriver and take out the screws that hold down the levers that keeps the display screen clamped down.
- Remove the two connectors with your fingers.

## Step 21



- Pry off the display screen using J001 screwdriver.

## Step 22



- Using your fingers, remove the defective screen from your device.

To reassemble your device, follow these instructions in reverse order.