



Pipo Smart S1 Speaker Replacement

Use this guide to replace Pipo Smart S1 Speaker.

Written By: Ali Alqallaf



INTRODUCTION

This guide shows the use of incorrect tools. Always use ESD safe tools, like the nylon spudger, when working with delicate internal components.



TOOLS:

- [Phillips #0 Screwdriver](#) (1)
 - [Heavy-Duty Spudger](#) (1)
 - [Soldering Iron](#) (1)
 - [iFixit Opening Tools](#) (1)
-

Step 1 — Battery



- Insert a blue plastic spudger in the middle of the two bodies of your Pipo S1 at the bottom of the device where the charging port is.

Step 2



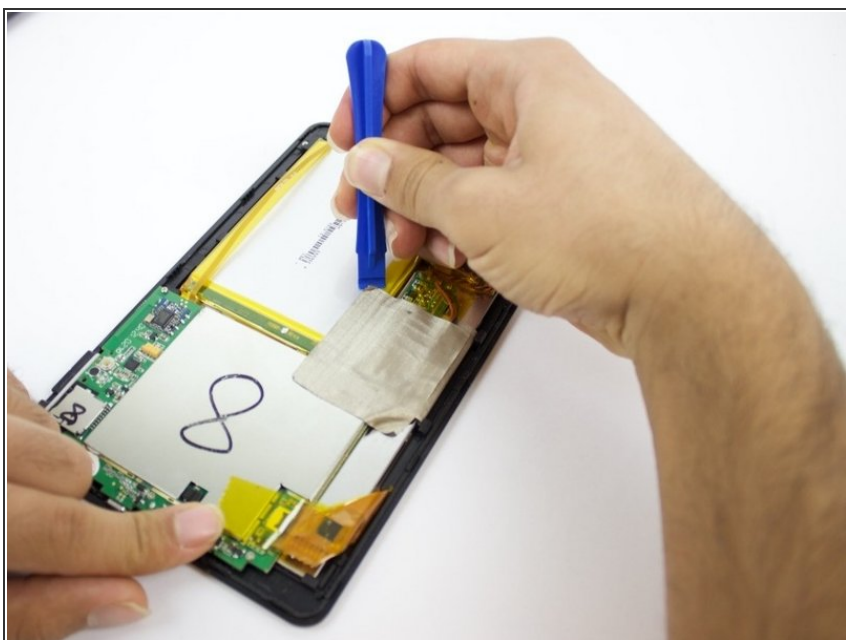
- Use the same Spudger and slide it along the gap you are creating , moving to the right direction against the mini usb port.

Step 3



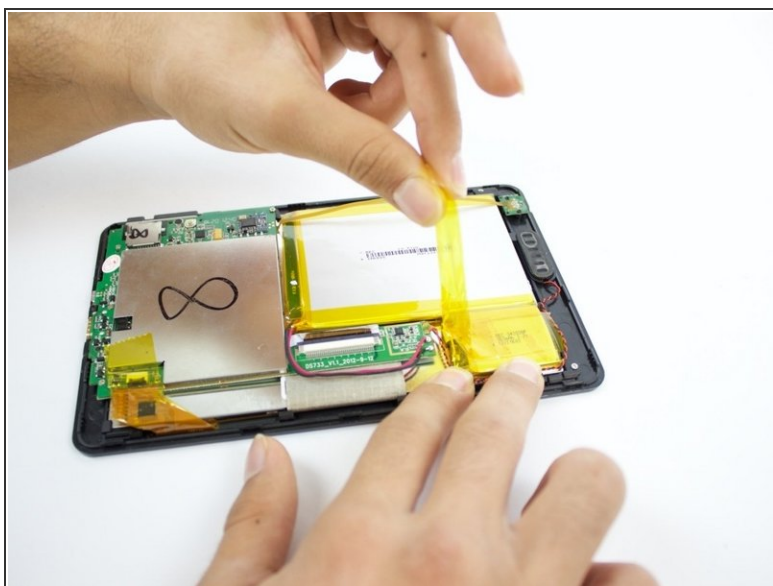
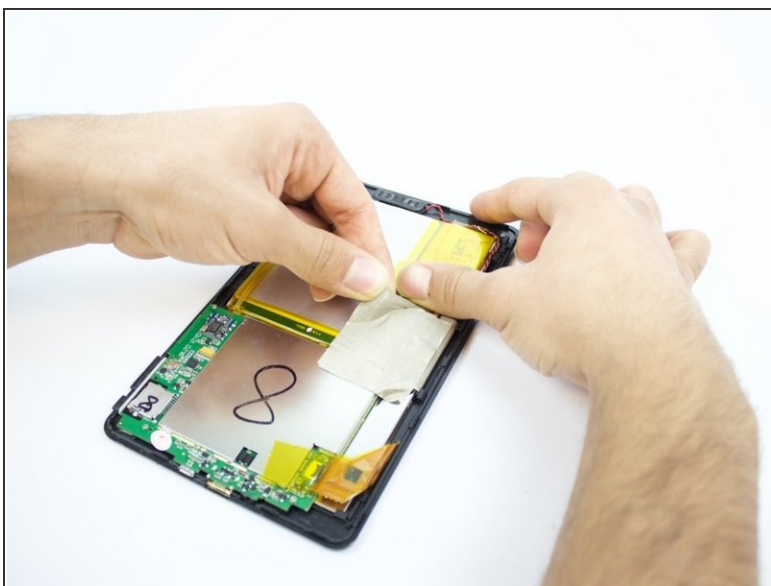
- Gently pry the body of the Pipo and pop the back cover open. Lift the back cover of the device and place it on the side.

Step 4



- Lift the edge of the white tape with the plastic opening tool.

Step 5



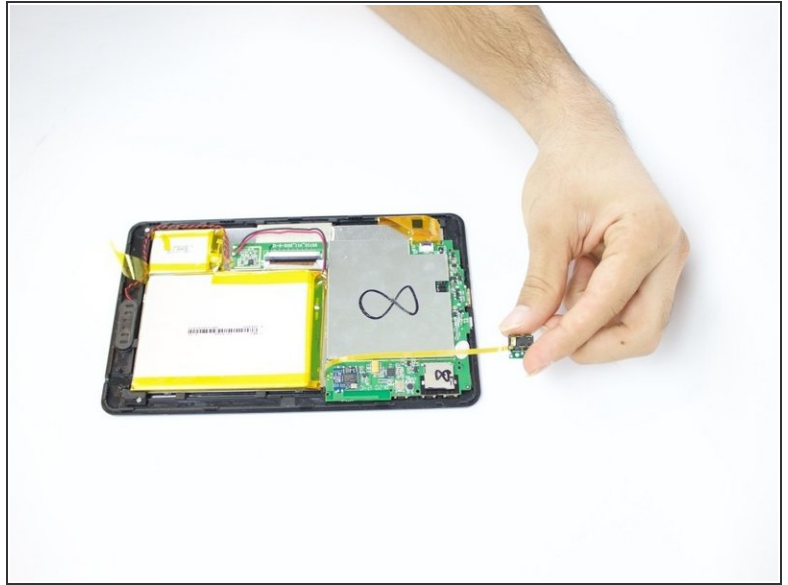
- Lift the white tape with your fingers and then lift the yellow tape holding the extension of the battery.

Step 6



- On the bottom of your tablet, take your J000 screwdriver and take out the two 3mm screws out.

Step 7



- Focus on the Headphone Jack as we will work on it. Lift it and move to the other side placing it on the surface you are working on.

Step 8



- Pry the battery using the Spudger to detach it from the glue underneath it.

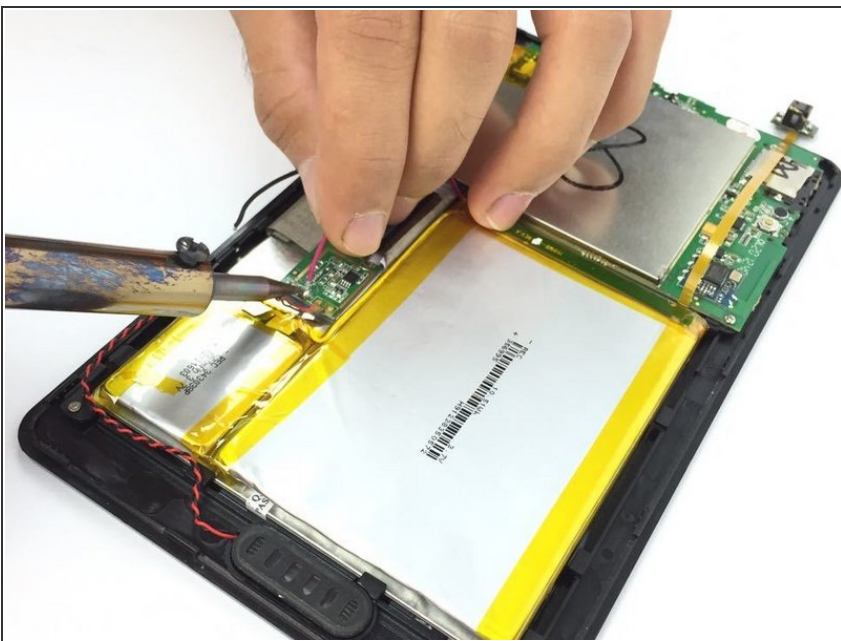
⚠ Be careful not to pinch the battery (Lithium batteries are great hazard and are prone to short circuit and thus burning or/and exploding).

Step 9



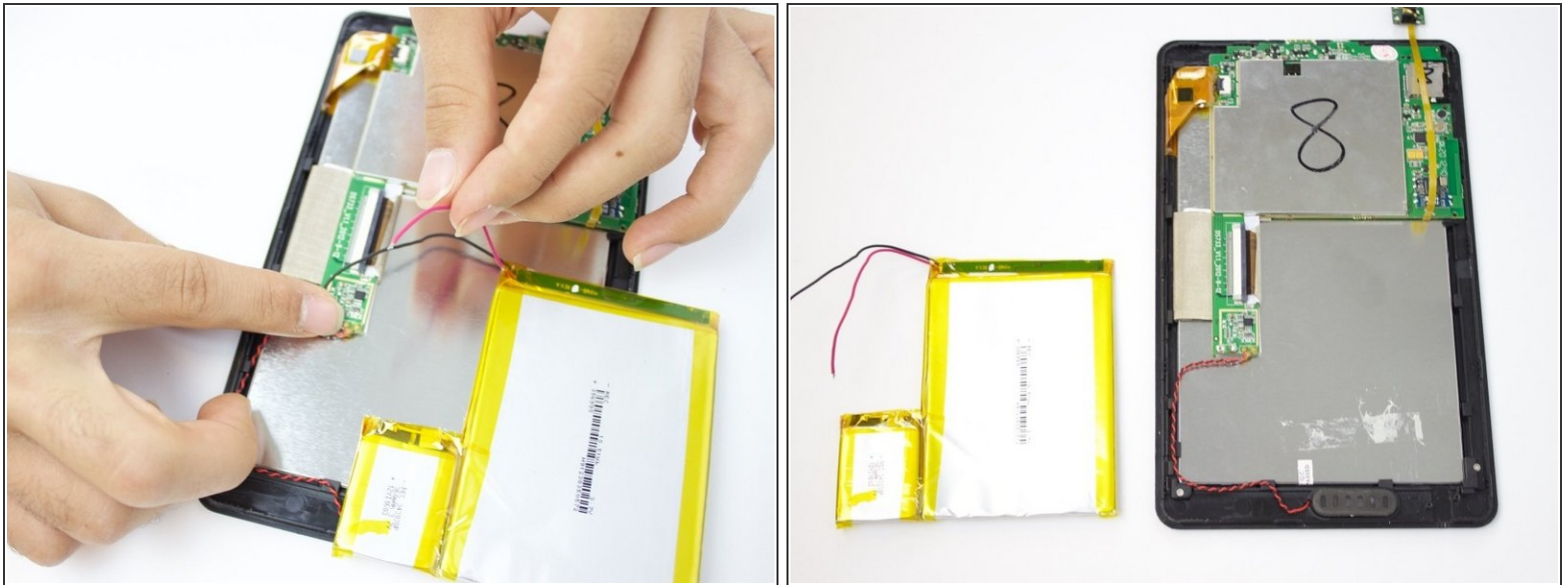
- Lift the battery and place it a little further from the positive and negative battery wires.

Step 10



- Using your soldering iron, melt the two lead spots to detach the wires.
- ⚠ the soldering iron is extremely hot, handle with caution. Always keep the soldering iron holder next to you when using it so you can return it back on the holder.

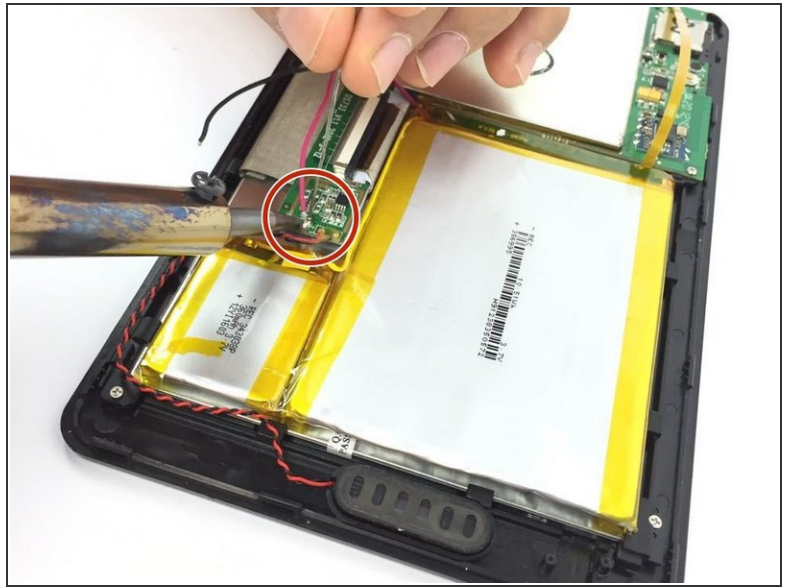
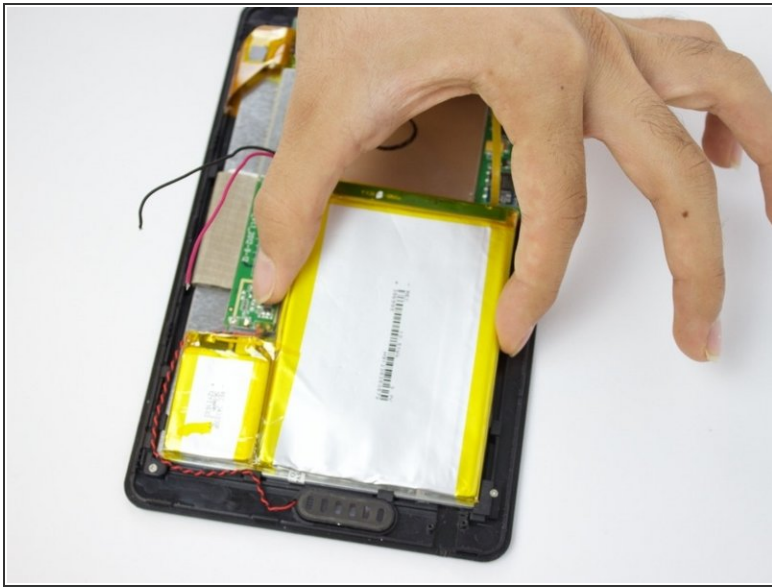
Step 11



- Remove the two wires. Then remove the battery completely from the device.

⚠ Beware to tape the negative and positive battery wires to keep them from short-circuiting.

Step 12



- Place your new battery in the tablet.
 - Solder the positive and negative battery wires to the board.
- ⚠ Beware to solder the right pole to the right spot on the circuit board as swapping them can burn the motherboard.

Step 13



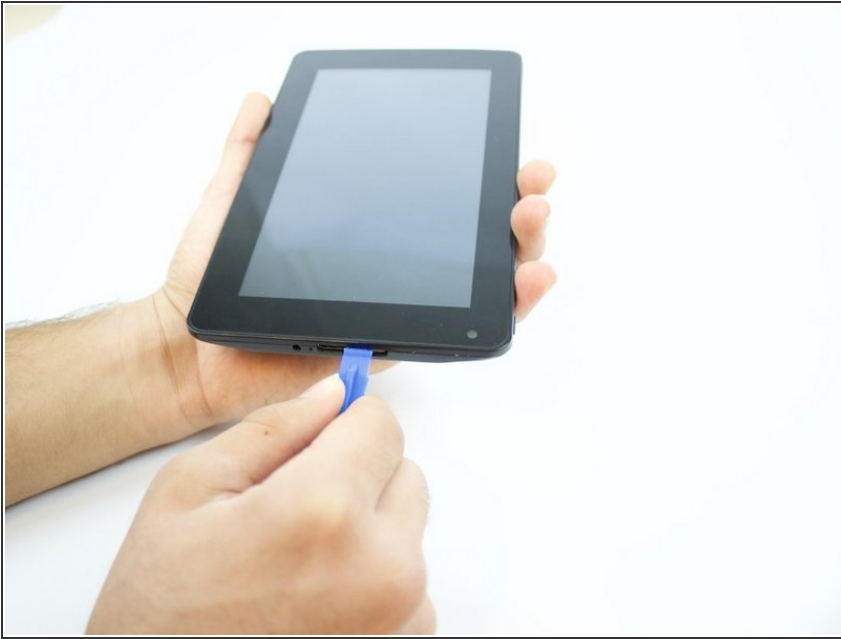
- Reinstall the holding down tape and make sure everything is back in place.

Step 14



- Attach the back cover and press on it until it clicks.

Step 15 — Speaker



- Insert the plastic Spudger in the middle of the two bodies of your Pipo S1 at the bottom of the device where the charging port is.

Step 16



- Use the same Spudger and slide it along the gap you are creating , moving to the direction against the mini usb port.

Step 17



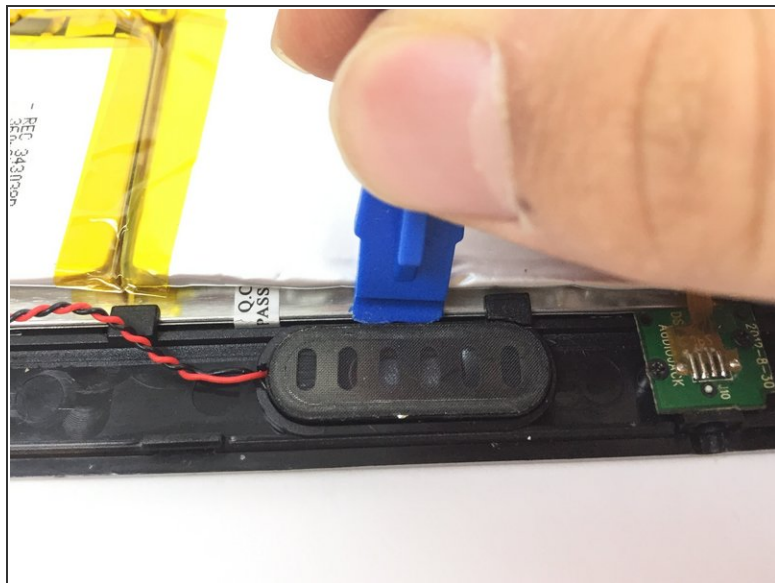
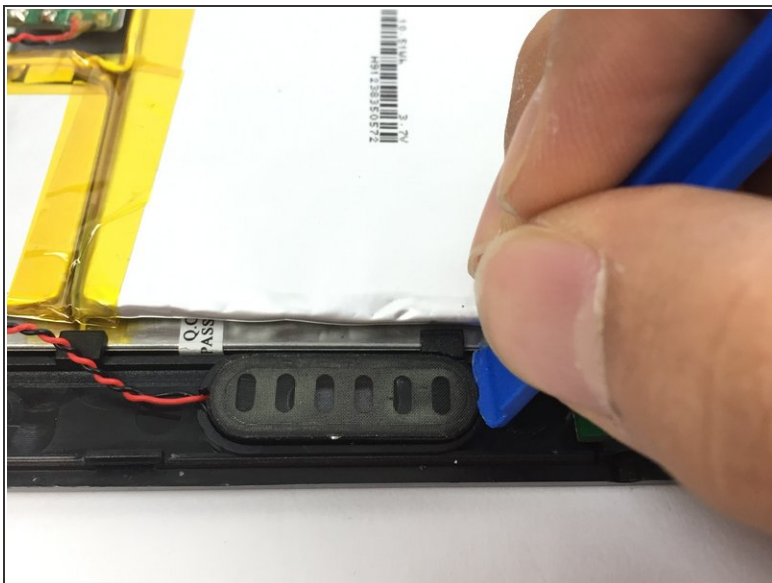
- With your fingers, carefully pry off the back cover of your Pipo S1 open.

Step 18



- On the bottom of your tablet, you will see a black oval shaped part with a red and black wire connected to it, which will be your speaker.

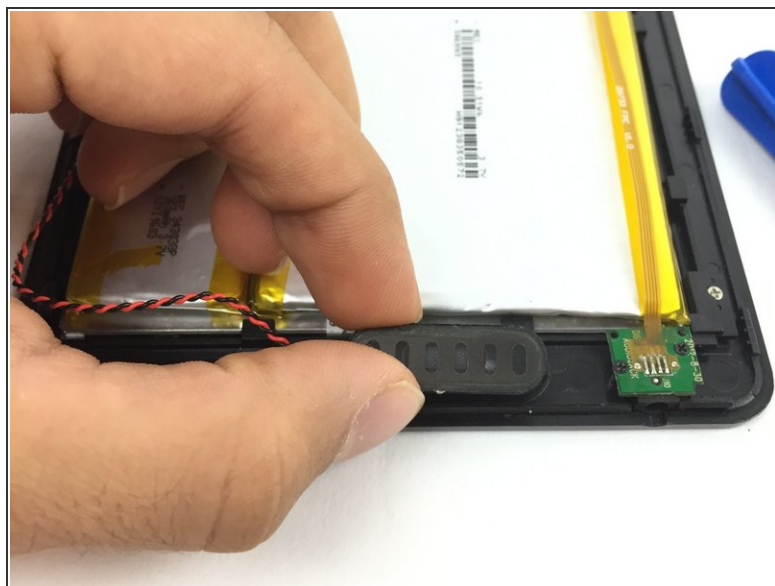
Step 19



- Using iFixit plastic spudger start to pry off the speaker.

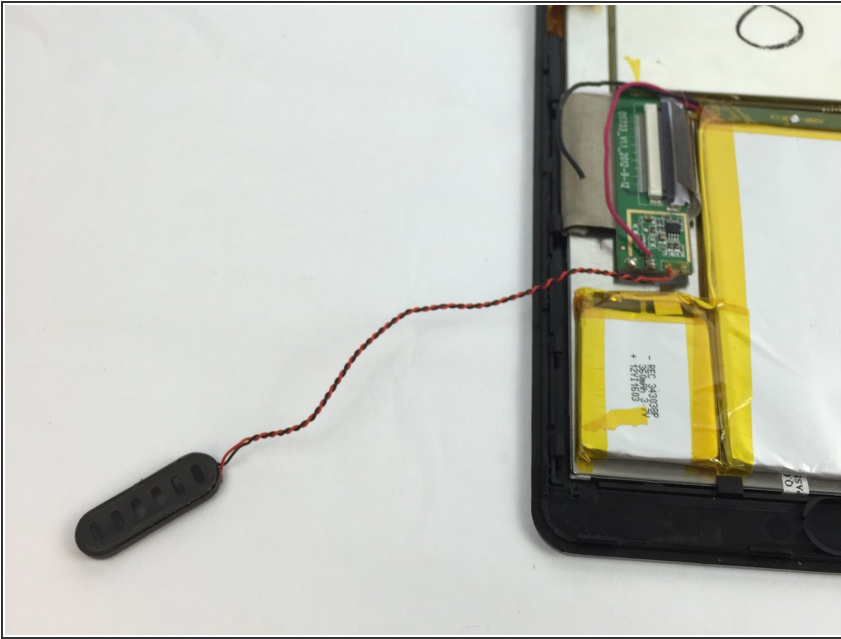
⚠ Alternate sides as you are prying it off is important to avoid damage to the speaker molding.

Step 20



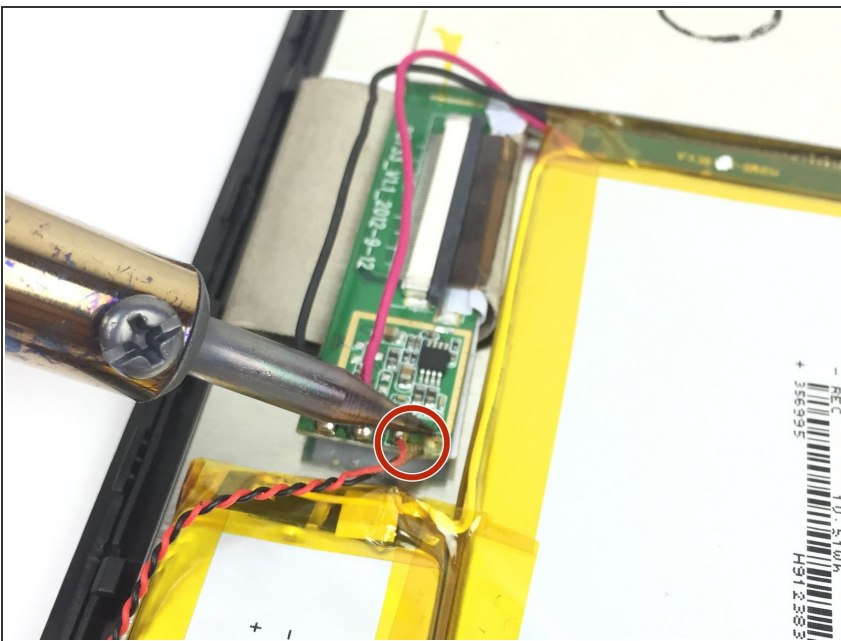
- After the speaker is wiggled free, the speaker can be pulled out easily with your fingers.

Step 21



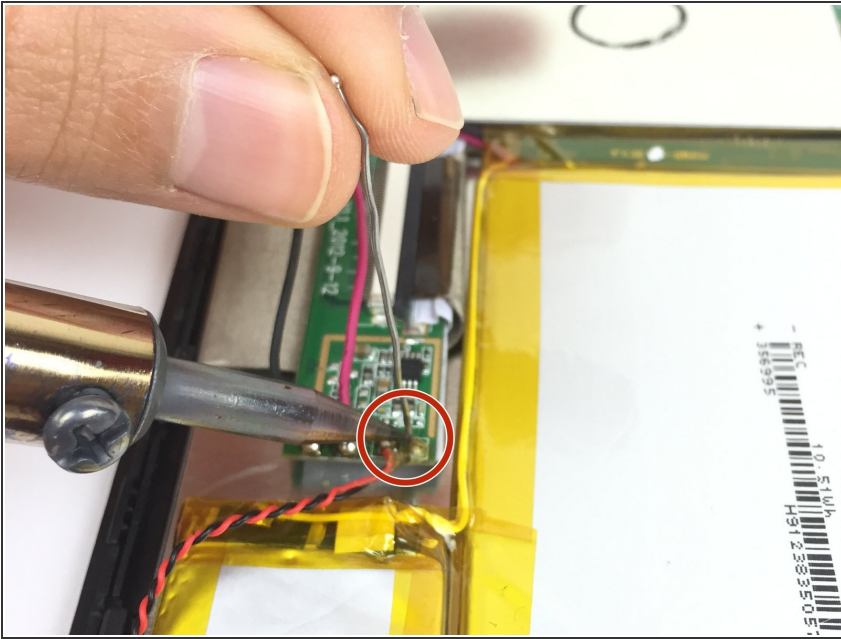
- Place the defective speaker next to your Device.

Step 22



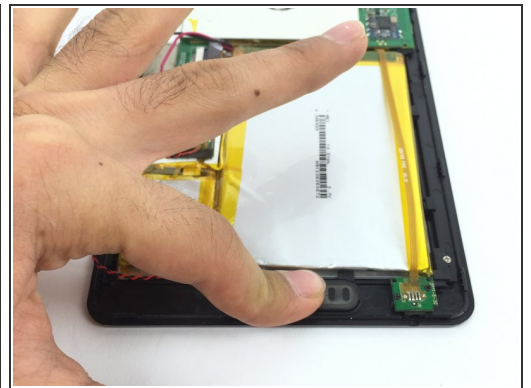
- Take your iFixit soldering iron and disconnect the speaker wires from the motherboard.
- ⚠ the soldering iron is extremely hot, handle with caution. Always keep the soldering iron holder next to you when using it so you can return it back on the holder.

Step 23



- Take your iFixit soldering iron and re-connect the new speaker wires to the motherboard.

Step 24



- Carefully place the new speaker to the speaker port.
- Push the speaker gently to the speaker port to connect it properly.

To reassemble your device, follow these instructions in reverse order.