



Planet Eclipse Etha Eyes Replacement

This guide explains how to replace the eyes on the Planet Eclipse Etha paintball marker.

Written By: Hannah Lancaster



INTRODUCTION

The Etha's Eyes determine there is a ball in the chamber before firing. This guide is useful for players who choose to upgrade their eyes, or for players who have a marker with broken eyes.



TOOLS:

- [Macro Bit Set](#) (1)
-

Step 1 — Regulator



- Firmly grasp hold of the ring on the bottom of the 90 degree silver fitting on the front of the gun.
 - Pull hard, but slowly, on the macroline where it comes out of silver piece until it comes out.
- i** The macroline is the black hose connecting the regulator to the tank connection.

Step 2



- Remove the regulator by unscrewing it in a clockwise direction.

Step 3 — Battery and Grip Panels



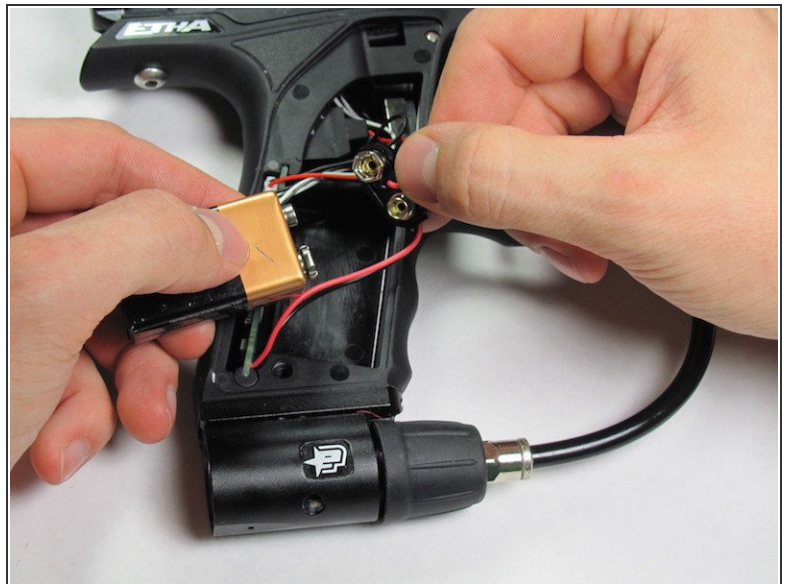
- Use the 5/64" hex key to remove the screw shown.
- Remove the grip panel by gently holding the bottom of the panel and lifting the panel off.
- ⓘ If you are only replacing the battery, skip the next step.
- ⓘ The screws in this guide are interchangeable with those shown in the Eyes replacement guide.

Step 4



- Flip the marker over and use the 5/64" hex key to remove the screw shown.
- Remove the grip panel by gently holding the bottom of the panel and lifting the panel off.

Step 5



- Carefully remove the 9V battery and connector.
- Remove the 9V battery from the connector.

Step 6 — Frame



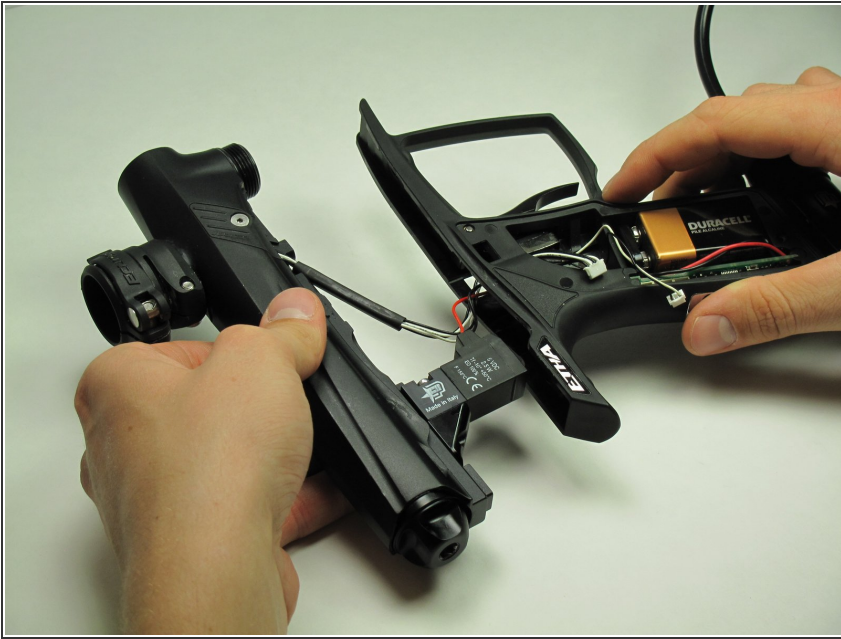
- Carefully disconnect the three connectors from the circuit board.
- ⓘ Don't worry about remembering which direction the connectors go in, they will not fit in the board in the wrong direction.

Step 7



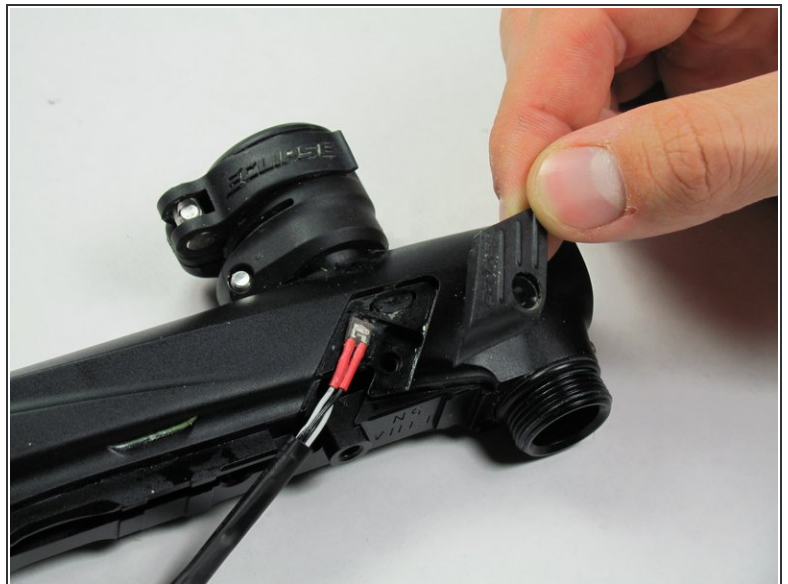
- Use the 1/8" hex key to remove the two dome-headed screws by rotating them counter-clockwise.

Step 8



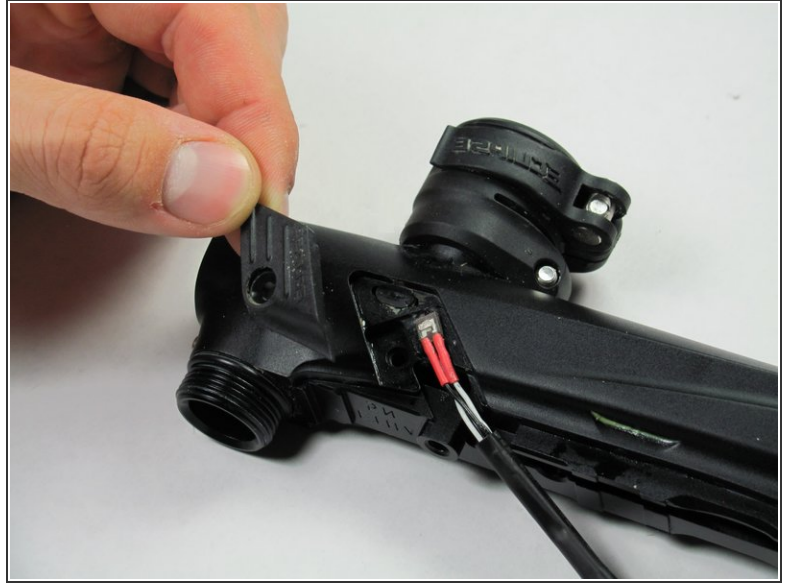
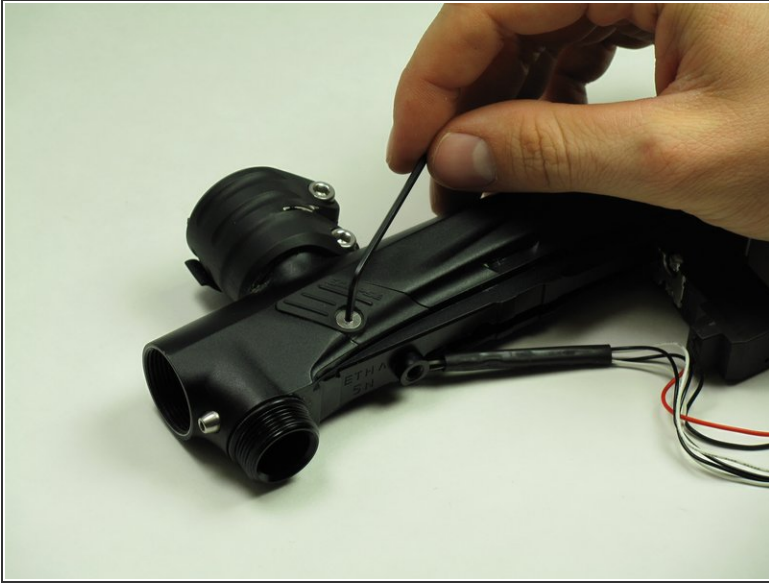
- ⚠ Be very careful during the step to avoid damage to the solenoid or wiring.
- Gently separate the top and bottom of the marker.

Step 9 — Eyes



- Use the 5/64" hex key to turn the screw counterclockwise.
- Carefully remove the screw and place it off to the side.
- Remove the panel and place it off to the side.

Step 10



- Carefully flip the marker over.
- Use the 5/64" hex key to turn the screw counterclockwise.
- Remove the screw and place it off to the side.
- Carefully remove the panel and place it off to the side.

Step 11



- Grip the marker with one hand and gently pull the eyes out with your other hand.

To reassemble your device, follow these instructions in reverse order.