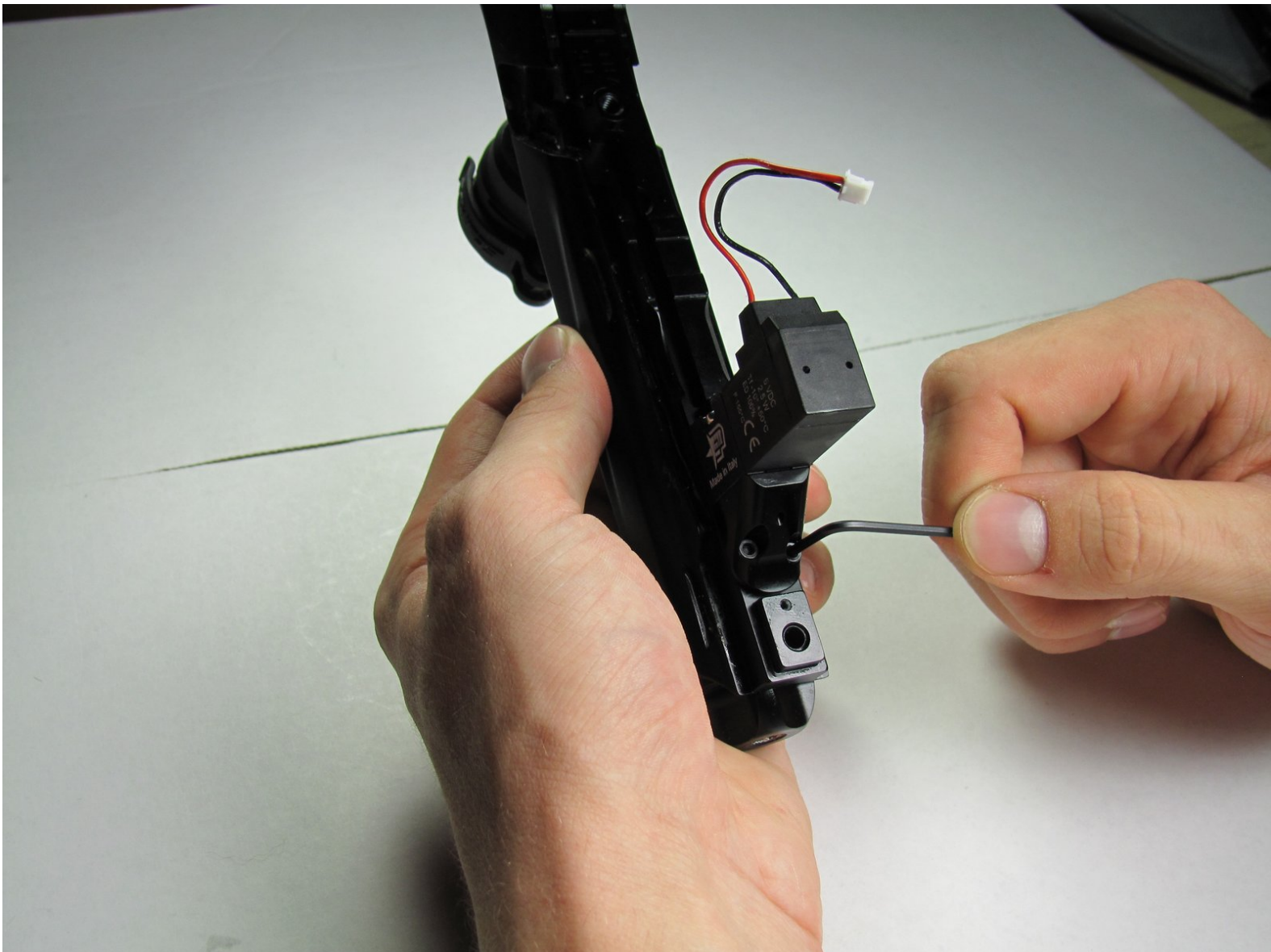




# Planet Eclipse Etha Solenoid Replacement

This guide shows how to replace the solenoid valve that controls airflow into marker's bolt.

Written By: Austin Eslinger



---

## INTRODUCTION

The solenoid valve is critical to operation and if it breaks or becomes unreliable, the marker will not function. This guide shows how to replace the solenoid in the event of failure.

---

### TOOLS:

- [Phillips #2 Screwdriver](#) (1)
  - [Macro Bit Set](#) (1)
-

## Step 1 — Regulator



- Firmly grasp hold of the ring on the bottom of the 90 degree silver fitting on the front of the gun.
  - Pull hard, but slowly, on the macroline where it comes out of silver piece until it comes out.
- i** The macroline is the black hose connecting the regulator to the tank connection.

## Step 2



- Remove the regulator by unscrewing it in a clockwise direction.



### Step 3 — Battery and Grip Panels



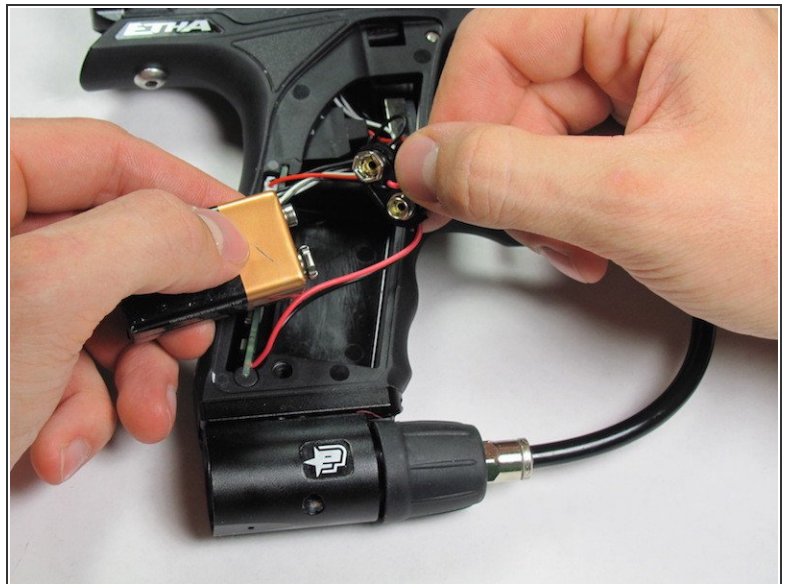
- Use the 5/64" hex key to remove the screw shown.
- Remove the grip panel by gently holding the bottom of the panel and lifting the panel off.
- ⓘ If you are only replacing the battery, skip the next step.
- ⓘ The screws in this guide are interchangeable with those shown in the Eyes replacement guide.

## Step 4



- Flip the marker over and use the 5/64" hex key to remove the screw shown.
- Remove the grip panel by gently holding the bottom of the panel and lifting the panel off.

## Step 5



- Carefully remove the 9V battery and connector.
- Remove the 9V battery from the connector.



## Step 6 — Frame



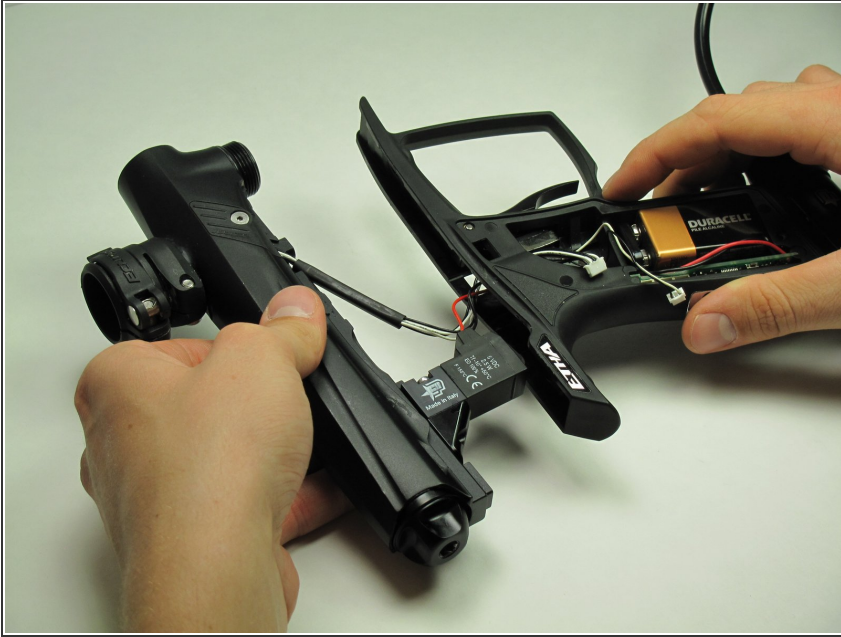
- Carefully disconnect the three connectors from the circuit board.
- ⓘ Don't worry about remembering which direction the connectors go in, they will not fit in the board in the wrong direction.

## Step 7



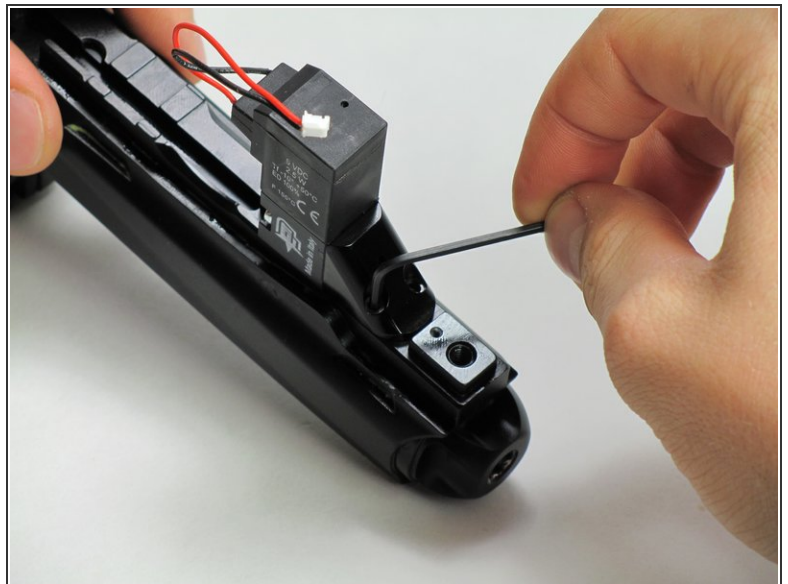
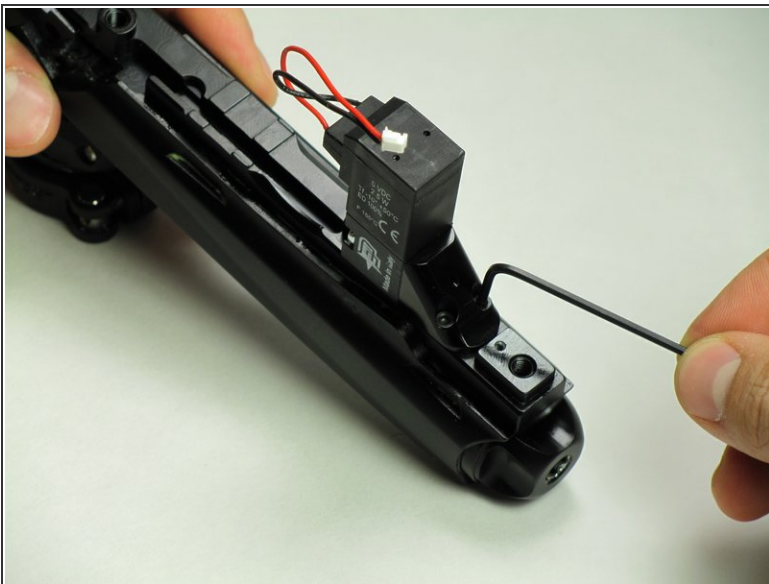
- Use the 1/8" hex key to remove the two dome-headed screws by rotating them counter-clockwise.

## Step 8



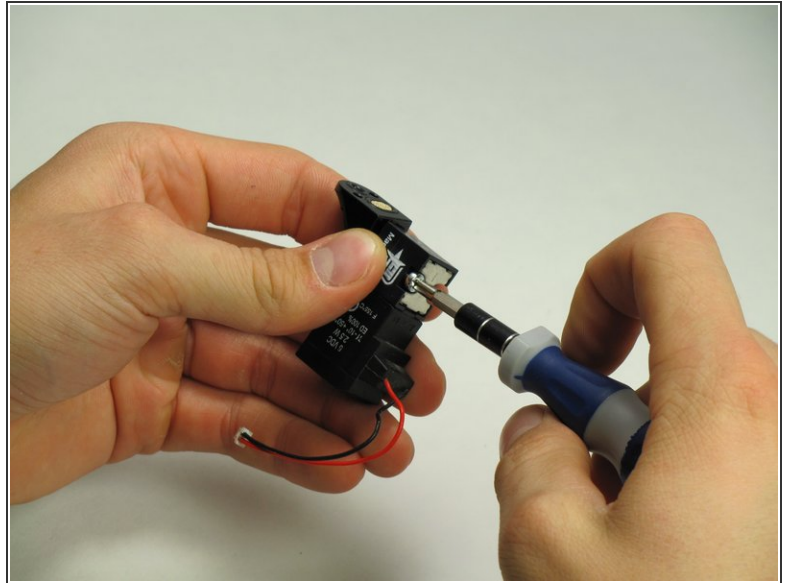
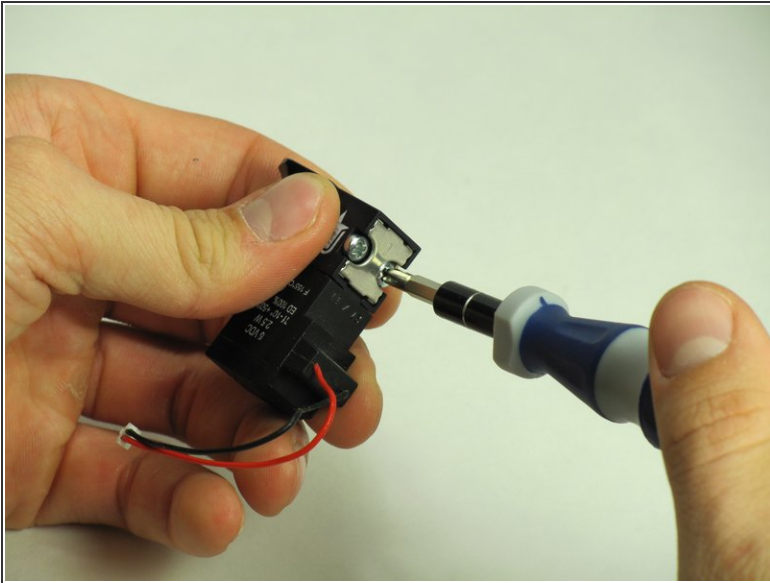
- ⚠ Be very careful during the step to avoid damage to the solenoid or wiring.
- Gently separate the top and bottom of the marker.

## Step 9 — Solenoid




- Remove the two black hex bolts that connect the solenoid mount to the body.
- Use the 5/64" Allen Key to rotate each screw counter clockwise.

## Step 10



- Remove the two Phillips head screws that connect the solenoid to its mount.
- Use a Phillip's head screwdriver and rotate each screw counter clockwise.

 Do not attempt to dismantle the solenoid. Intentionally dismantling or tampering with the solenoid voids the manufacturer's warranty.

To reassemble your device, follow these instructions in reverse order.