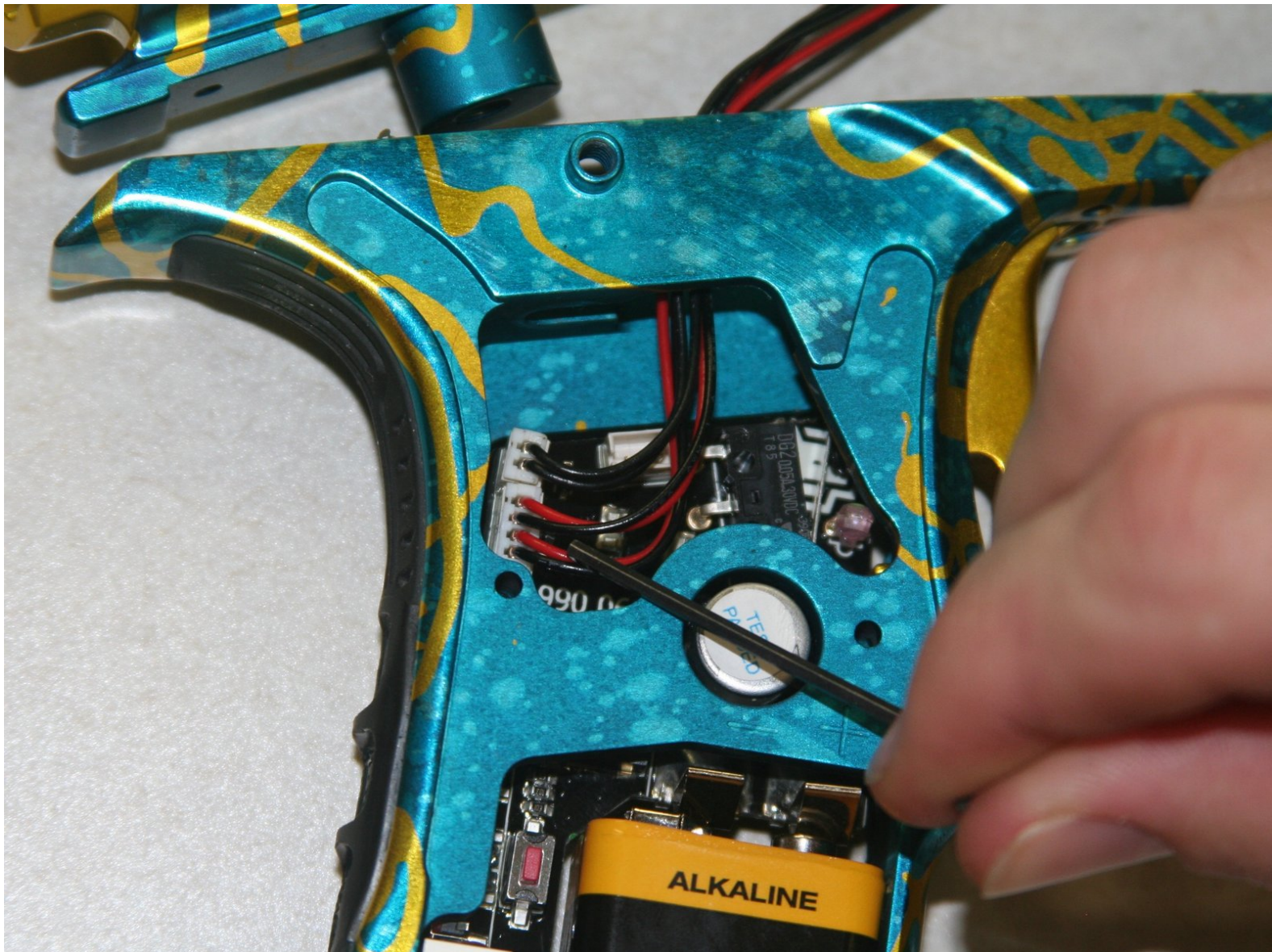




Planet Eclipse Geo3 Eyes Replacement

Replacing the eyes and eye wire.

Written By: Rett Triplett



INTRODUCTION

This guide will show how to replace the eyes and eye wire if either are damaged.



TOOLS:

- [Macro Bit Set](#) (1)
- 5/64" Allen Wrench, 1/8" Allen Wrench



PARTS:

- [New eyes](#) (1)

Step 1 — Grip



- Remove the four screws from the grip with the 5/64" allen wrench. There are two on each side.

Step 2



- Pull the grip away from the frame.

Step 3



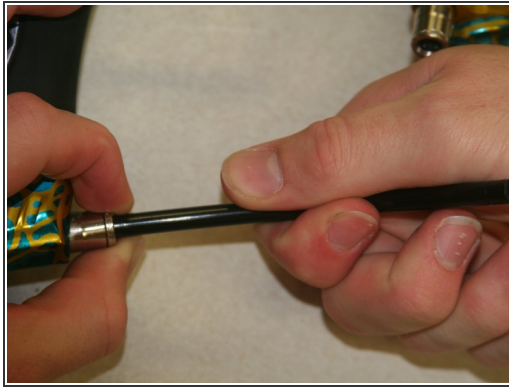
- Pull the grip through the opening.
- The grip is connected in the middle and is one piece.

Step 4 — Macroline



- Remove the macroline from the fitting by pulling the metal ring around the end of the fitting away while pulling out the macroline.
 - ❗ *It helps to rotate the collar to create room to pull out macroline.*

Step 5



- While pulling in the metal ring on the fitting, pull the macroline out.

Step 6 — Body



- Use 1/8" allen wrench to remove screw behind regulator.

Step 7



- Use 1/8" allen wrench to loosen the screw inside the grip on the right side.
 - ❗ *The screw only needs to be turned a couple of times.*
 - Slide the upper frame forward on the rails and remove the screw from the slot to separate the two halves of the body.
- ⚠ **BE CAREFUL:** Do not pull the two frames apart too much or too quickly. This may cause the wires to be damaged.

Step 8 — Eyes



- Use a prying tool or tweezers to gently remove the connection from the board. It is the connection with 2 black and 2 red wires.
- Pull the wire through the opening.

Step 9



- Use 5/64" allen key to remove each screw from eye covers (Located on both sides of the paintball marker.)
- Pull off eye covers. (Located on both sides of the paintball marker.)

Step 10



- Gently pull out the two eyes, one on each side of the paintball marker.
 - ❗ *The red wire leading to the eye on the right side of the paintball marker. The black wire leads to the eye on the left side.*

To reassemble your device with a new eye wire, follow this guide in reverse.