



Plantronics CS50 Headset Battery Replacement

If all of sudden your ear piece stops working, check if it is still on. If it isn't or can barely hold charge, the battery needs replacing.

Written By: Yuliya Levitskaya



INTRODUCTION

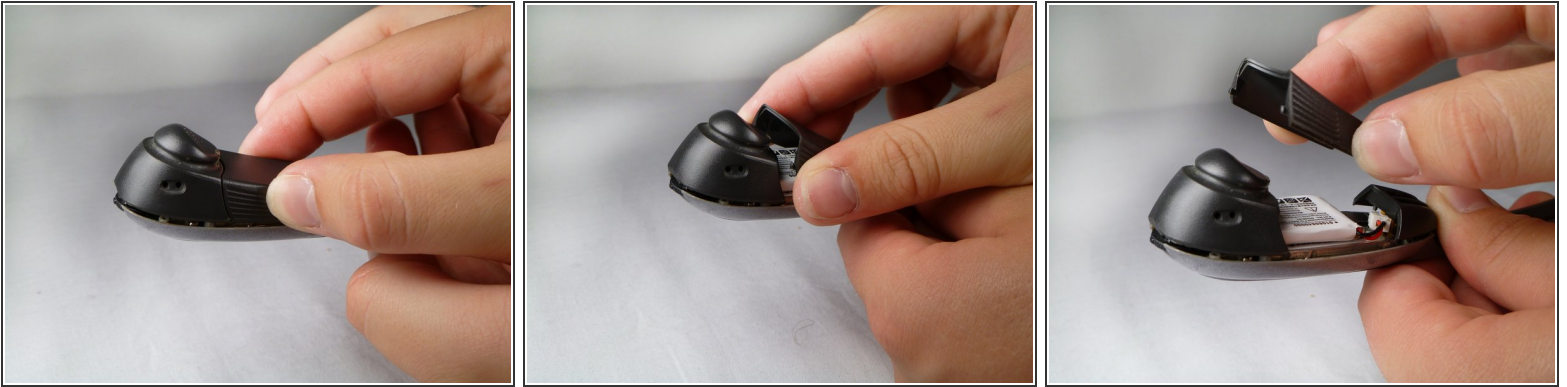
Follow these steps to replace a battery.



PARTS:

- [3.7VDC Replacement Battery](#) (1)
-

Step 1 — Battery



- Flip the headset face down.
- Squeeze both sides of the battery cover.
- While squeezing, pull the cover up slowly to remove it.

Step 2



- Locate and detach the white connector that connects the wires of the battery to the wires of the headset.

To reassemble your device, follow these instructions in reverse order