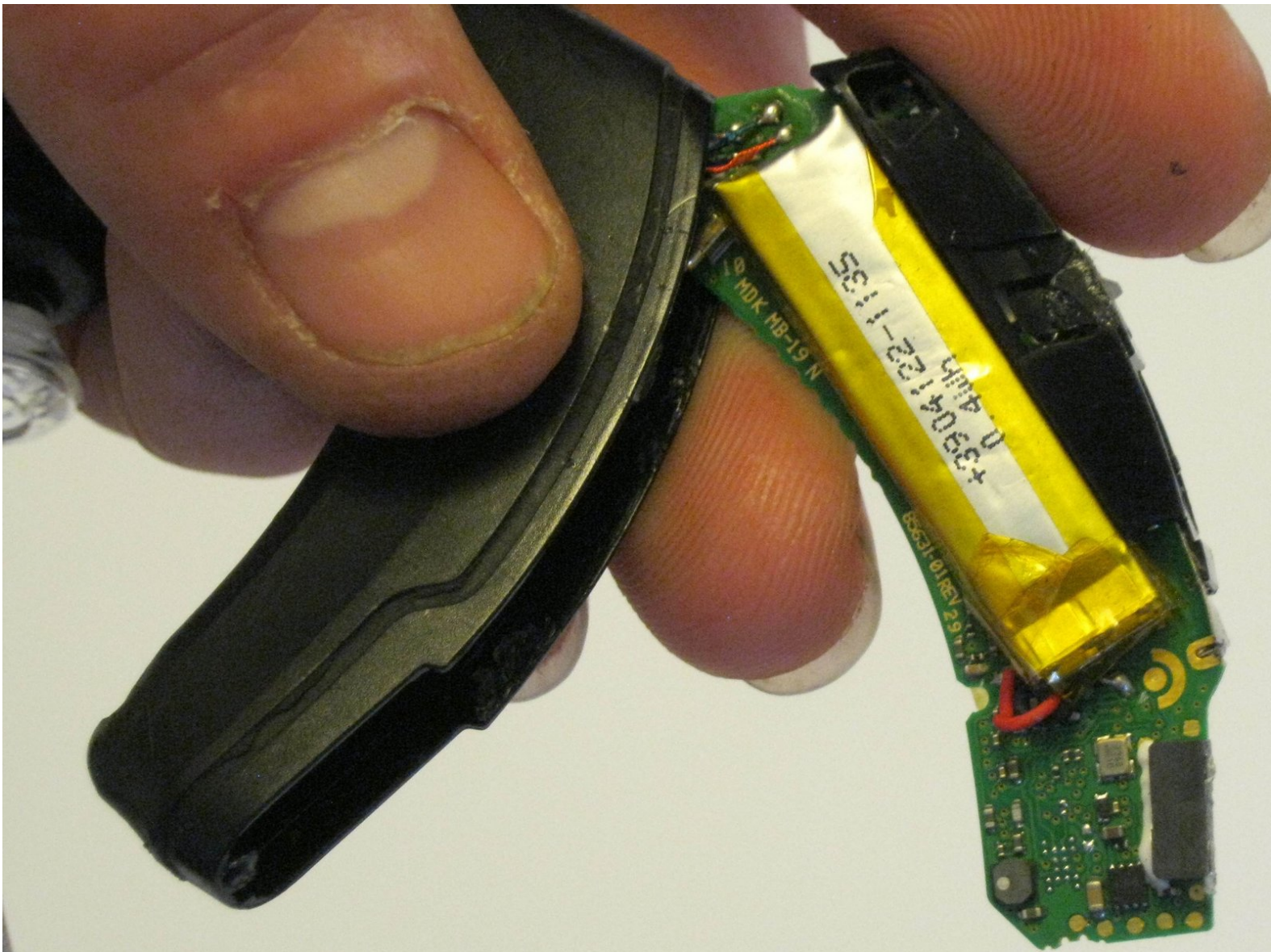




# Plantronics Voyager Legend Battery Replacement

This guide is designed to detail the removal and replacement of the battery for the Plantronics Voyager Legend, due to power loss.

Written By: Lewis Certain



## INTRODUCTION

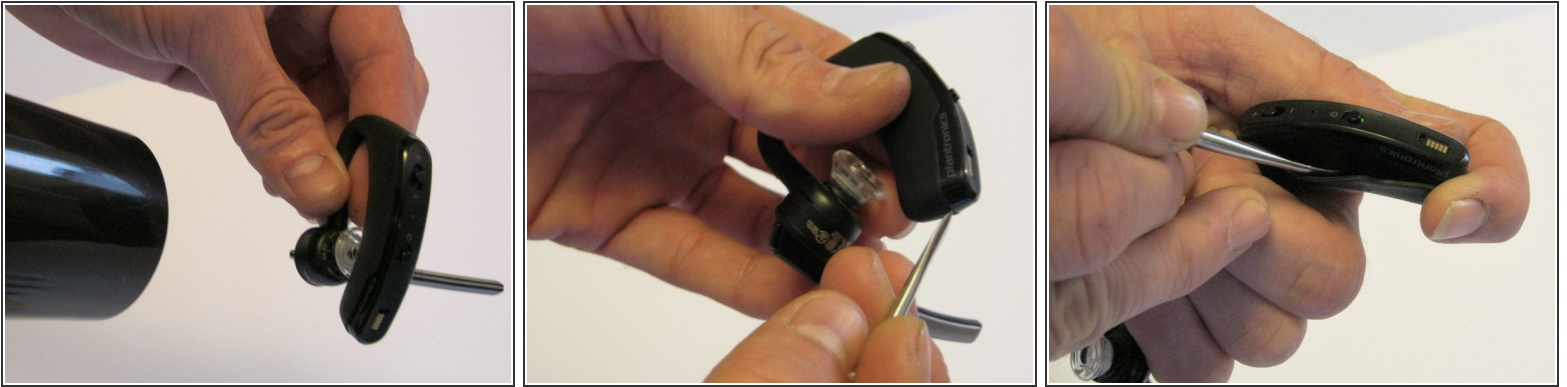
The Plantronics Voyager Legend is a Bluetooth headset, with user-friendly features such as extended battery life and an easy-to-use magnetic charging port. Because of these features, power problems can be handled accordingly, to ensure a longer life for the device. This guide will detail how to carefully disassemble the main unit, remove the internal power circuitry, remove and replace the battery, and reassemble the unit for the prolonged life desired.



### TOOLS:

- [Heat Gun](#) (1)
  - [Spudger](#) (1)
  - [Metal Spudger Set](#) (1)
  - [Soldering Iron](#) (1)
  - [Flush Wire Cutters](#) (1)
  - [Adhesive](#) (1)
-

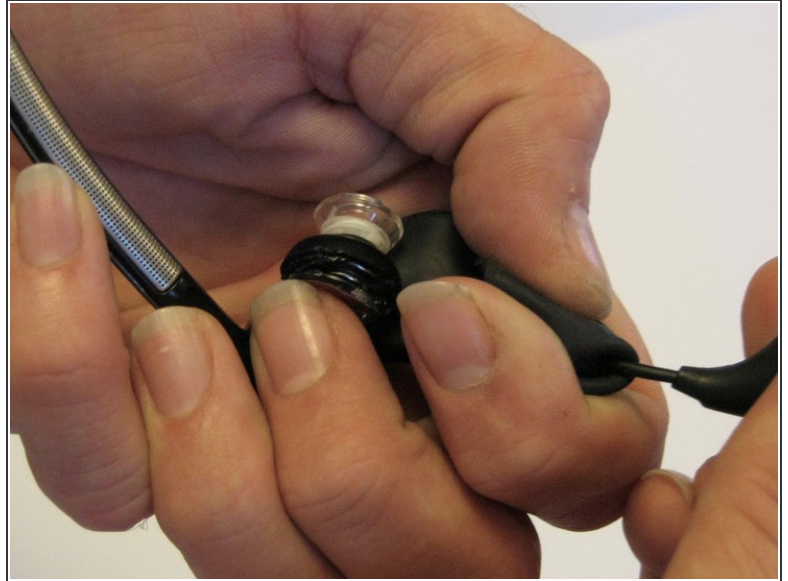
## Step 1 — Battery




- **Remove the soft, protective, outer covering.**
  - Use a heat gun (or a hair-dryer) to heat the main unit of the Plantronics Voyager Legend. This will loosen the adhesive that bonds the covering to the housing.
  - Use the pointed end of a small, metal spudger to begin separating the covering from the housing.
  - Use the rounded, dull end of the spudger to gently detach the rest of the covering.
- ⓘ It may be necessary to reheat the unit to keep the adhesive soft enough to remove the covering without damaging it.

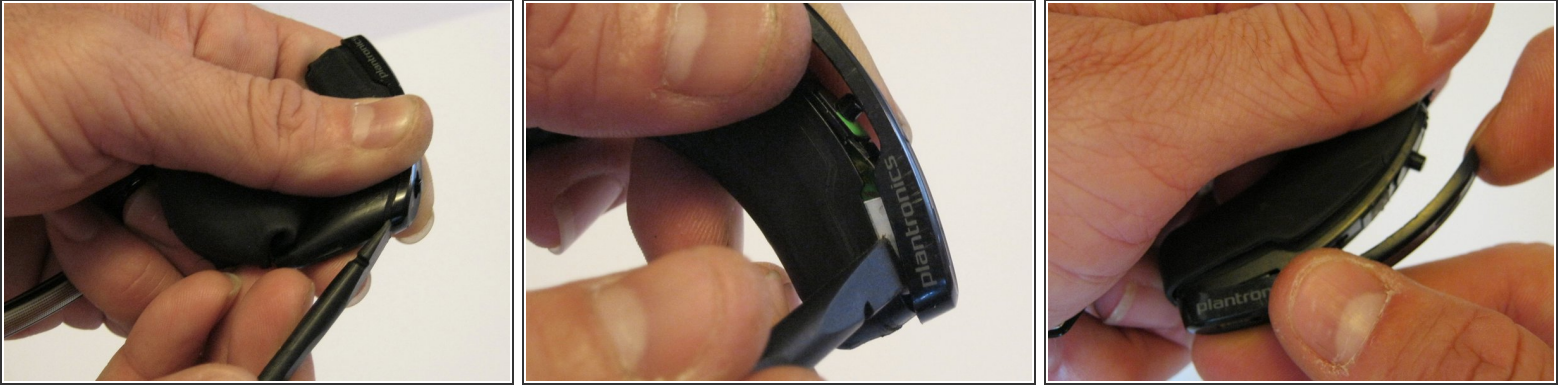


## Step 2




- **Reveal the plastic housing.**
  - Fold the soft, protective covering inside-out.
  - Pull the housing completely out of the covering, revealing the main wire that connects the entire unit.
-  This leeway will be required for the removal of the circuitry, which will be detailed later.

### Step 3

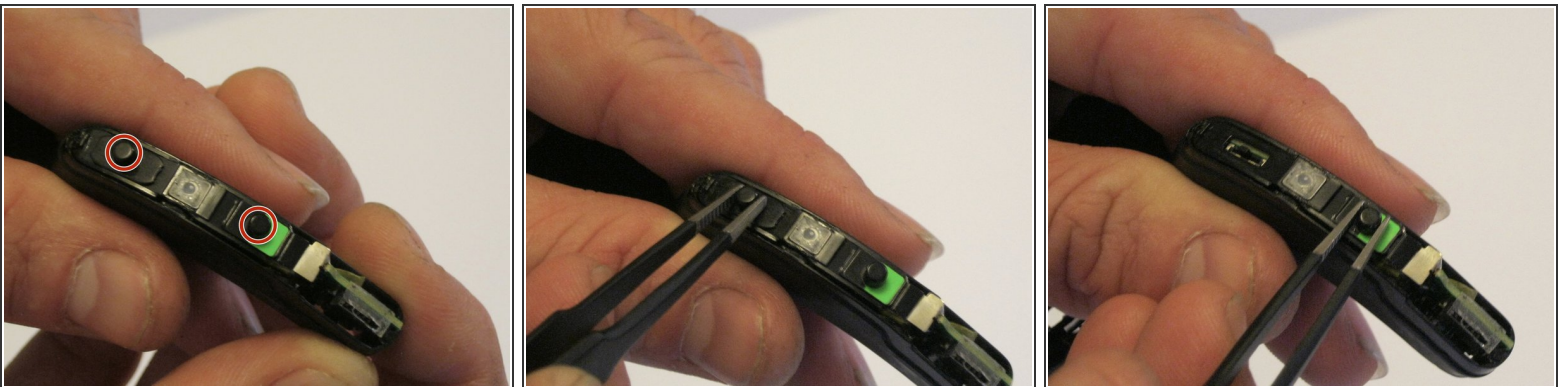


- **Remove the protective plate on the bottom of the housing.**

 The plate is held in place by a series of snaps and magnets.

- Use the flat end of a spudger to begin dislodging the snaps, starting at the opposite end of the charging port.
- Work evenly around the circumference of the housing, until all snaps are free.
- Lift the plate off of the housing.

### Step 4

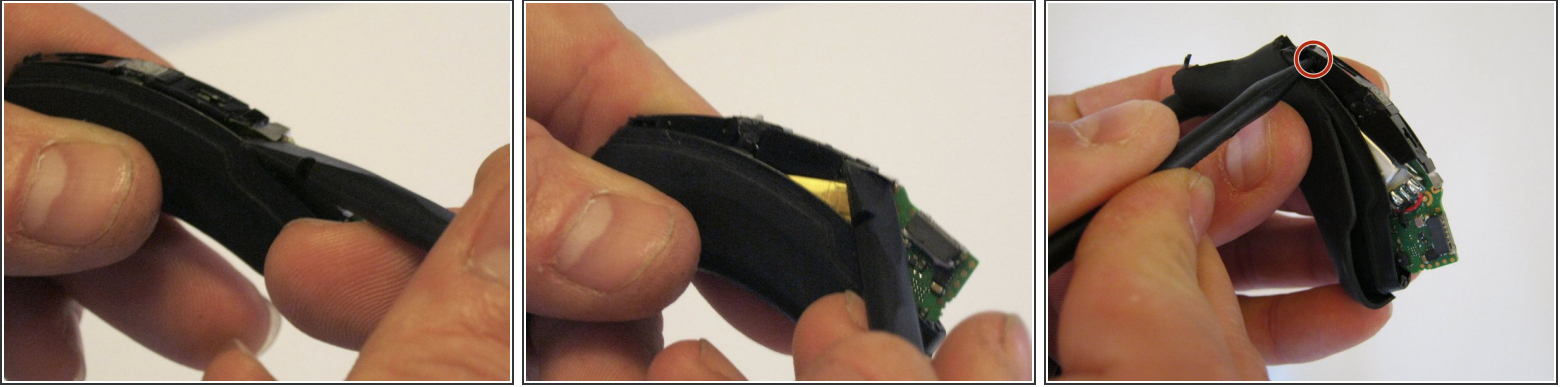


- **Remove the power and volume buttons.**

- Use precision tweezers to remove the volume button by lifting it out of place.
- Use precision tweezers to remove the power button, noting its orientation, by lifting it out of place.

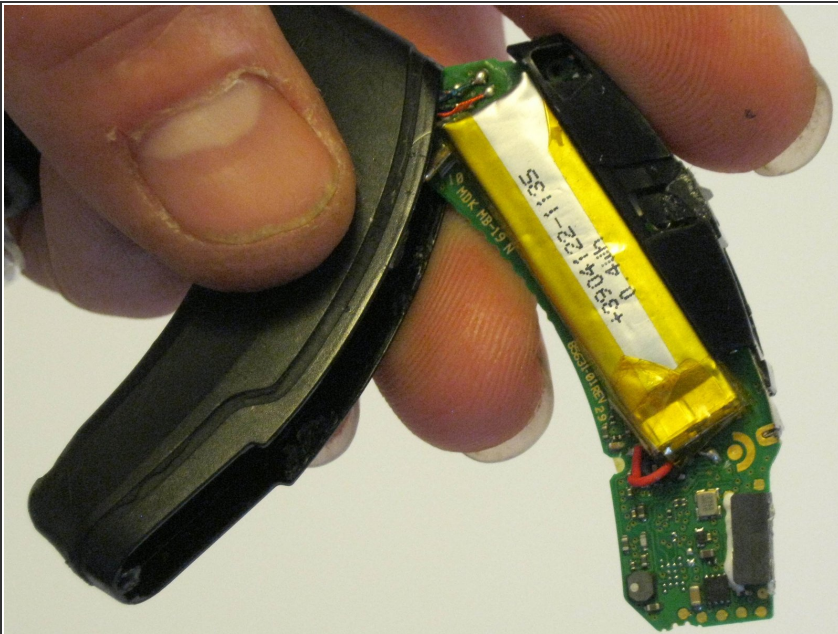


## Step 5



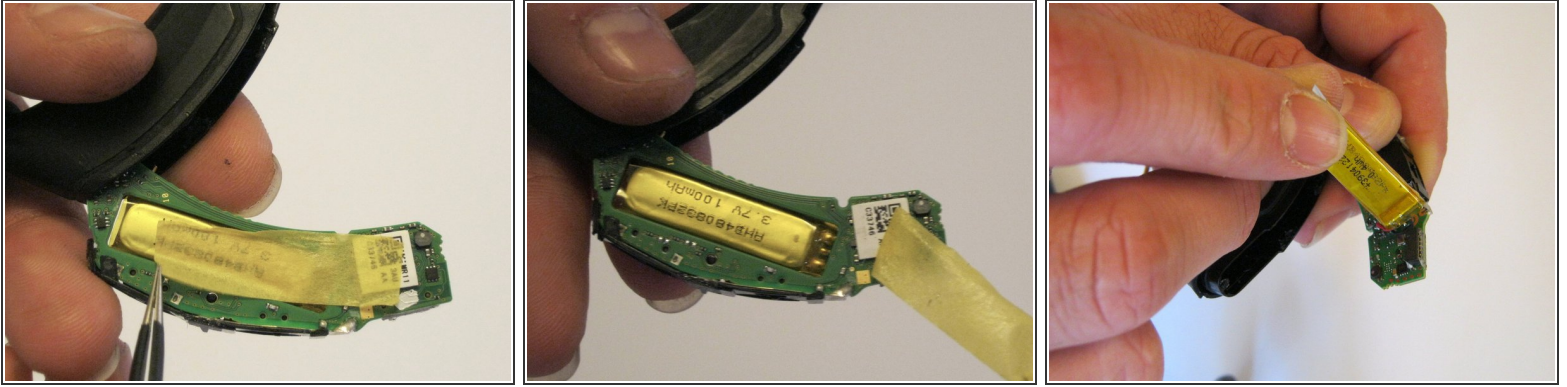
- **Begin removal of the battery circuitry.**
- Use the flat end of a spudger to begin lifting against the metal tab of the top edge of the circuit board unit.
- When lifted enough, use the pointed end of the spudger to lift the remaining distance. This is accomplished by inserting the pointed end of the spudger into the hole in the circuit board unit located at the opposite end of the charging port.

## Step 6



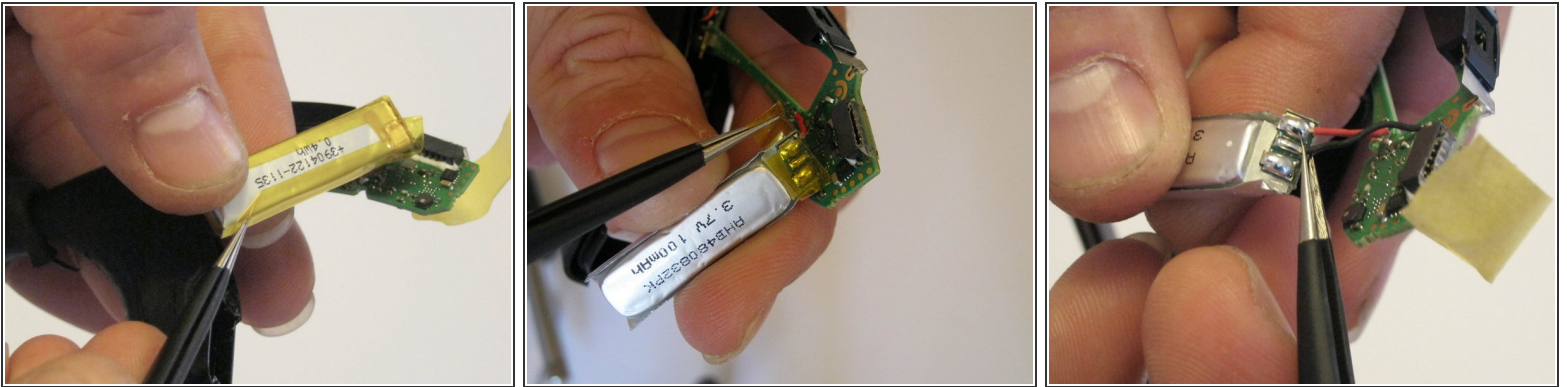
- Remove the circuit board, revealing the battery unit.

## Step 7



- **Free the battery from its circuit board positioning.**
- Locate the small piece of tape on the underside of the battery. Use a pair of precision tweezers to remove this tape.
- Lift the battery out of position.

## Step 8



- **Access the battery leads.**
- Use precision tweezers to remove the transparent, amber tape that encloses the battery. This will reveal a smaller piece of transparent, amber tape that encloses the leads to the battery.
- Use precision tweezers to remove the smaller piece of tape, revealing the leads.

## Step 9



- **Remove the old battery and replace it with a new one.**
  - Disconnect the leads using a pair of wire cutters. Scissors will work if there are no wire cutters available.
  - Solder the black, ground lead into place on the new battery.
  - Solder the red, positive lead into place on the new battery.
- ⓘ Refer to the iFixit [soldering guide](#) for assistance with soldering.

To reassemble your device, follow these instructions in reverse order, using an adhesive to reattach the soft, protective covering to the plastic housing.