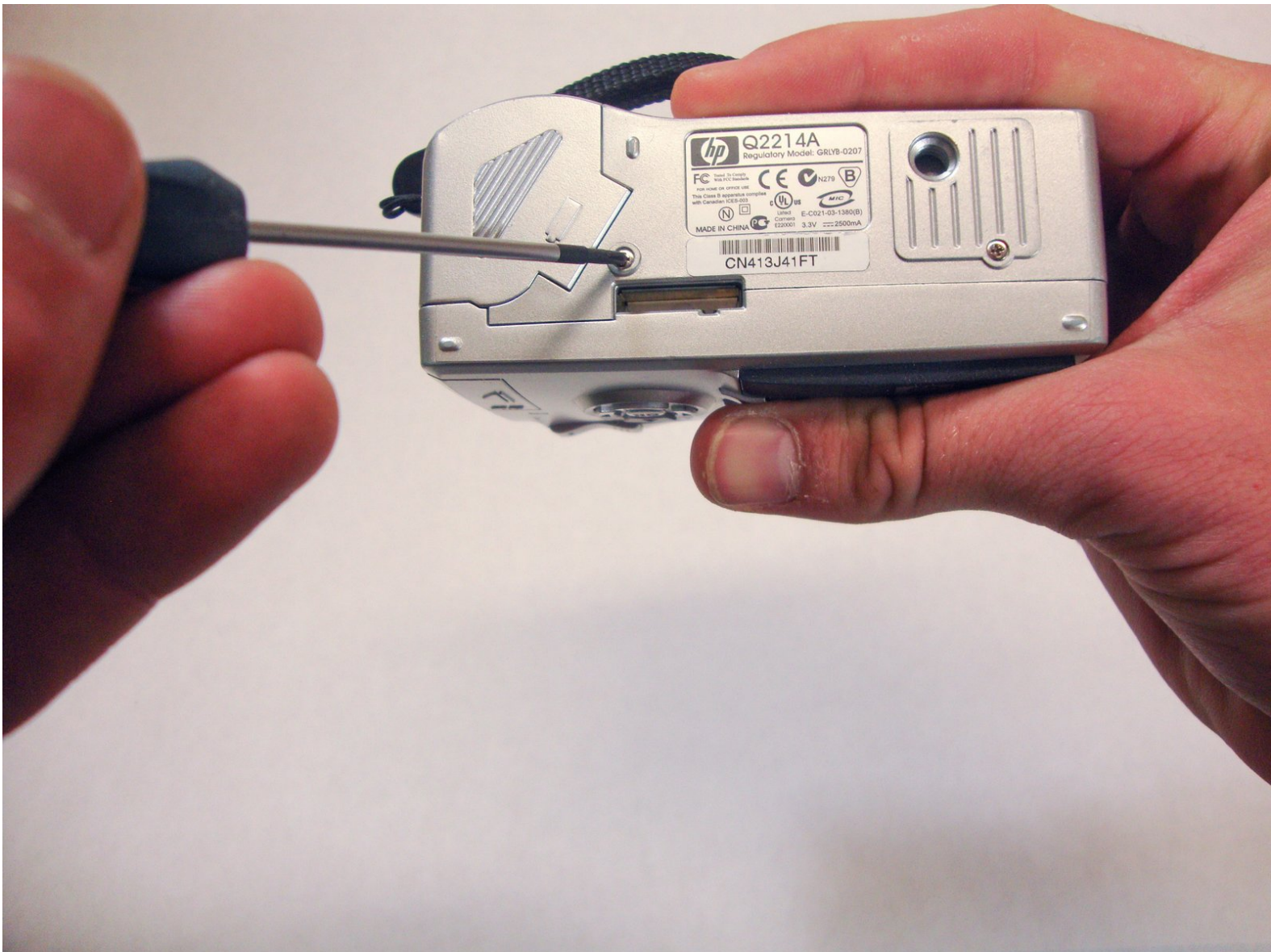




Plastic Casing

This guide will help you install a new casing for your camera.

Written By: Clay Young



INTRODUCTION

This guide will teach the reader how to install a new case of the camera. If the case on the camera gets cracked or is starting to come apart, this guide will help to replace it with a new case.

TOOLS:

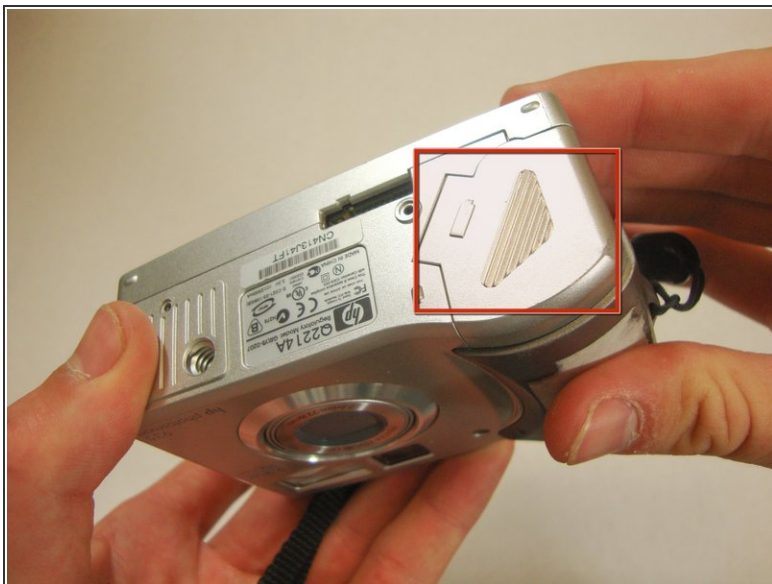
- [Phillips #00 Screwdriver](#) (1)
-

Step 1 — Batteries



- Flip the camera over so the bottom is facing you.

Step 2



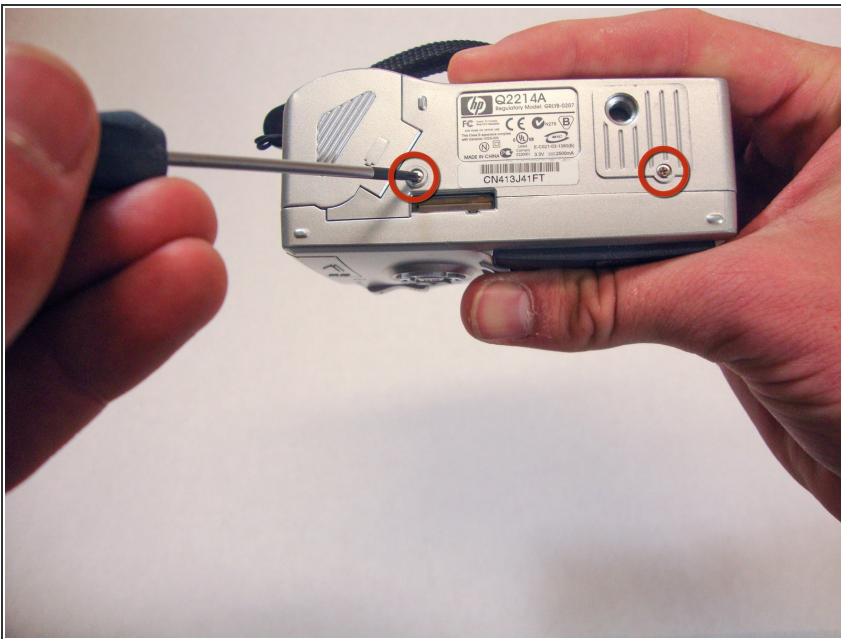
- Open the cover on the bottom by sliding it in the direction of the arrow.

Step 3



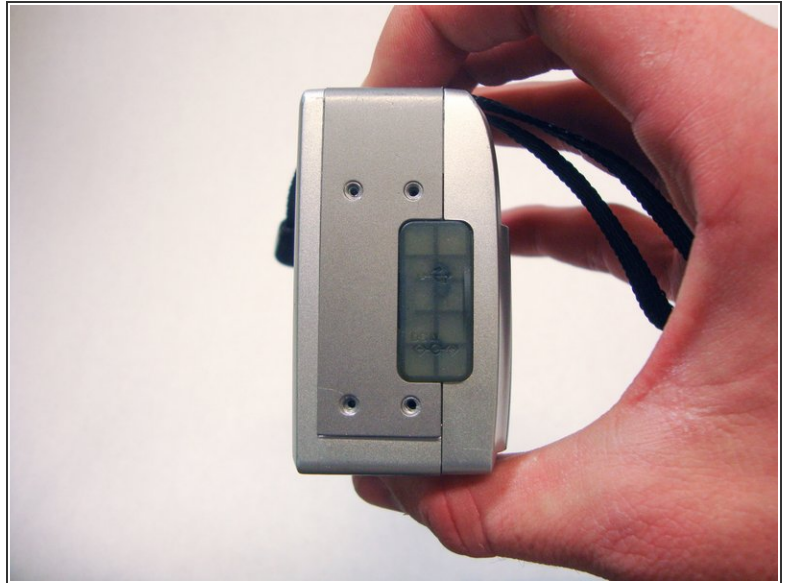
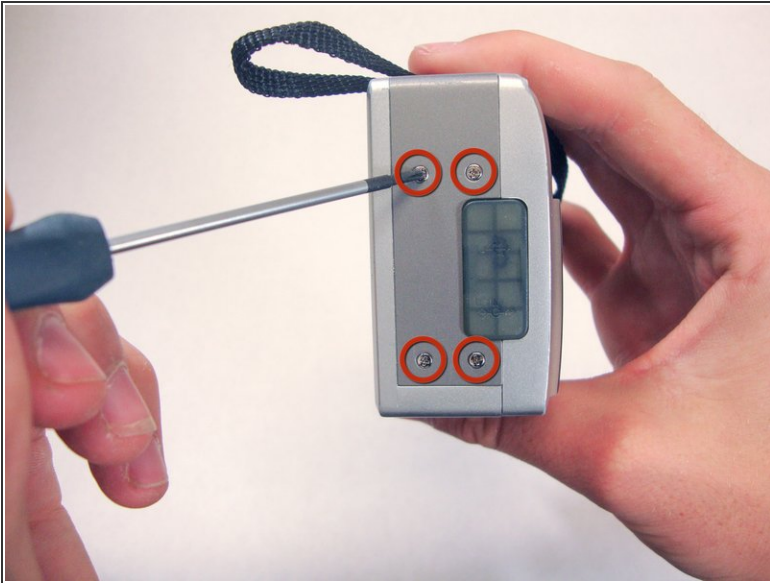
- Remove the batteries by pulling up on the top with your fingers.

Step 4 — Plastic Casing



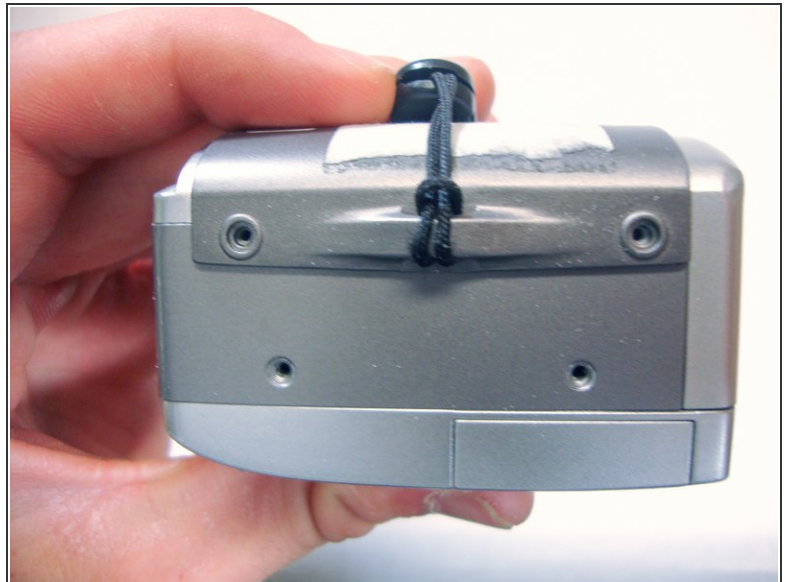
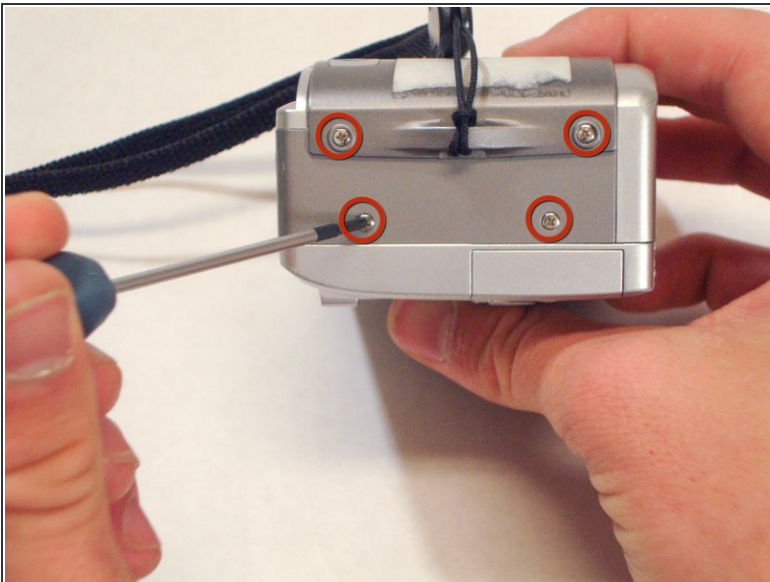
- Unless otherwise stated, use a phillips #00 screwdriver to remove screws.
- Remove the two 4.70mm screws in the bottom of the plastic casing.

Step 5



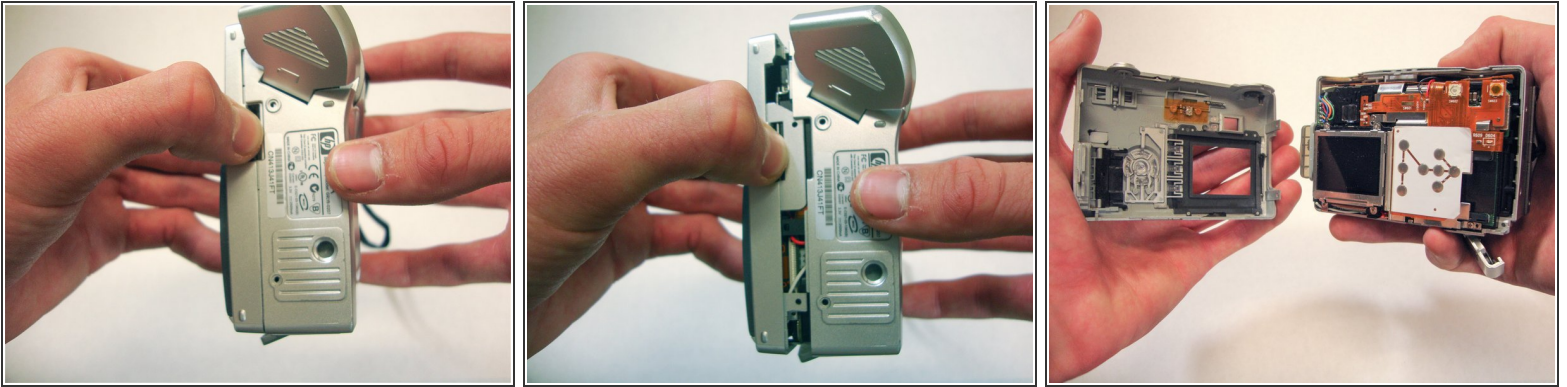
- Remove the four 4.70mm screws in the left side of the camera.

Step 6



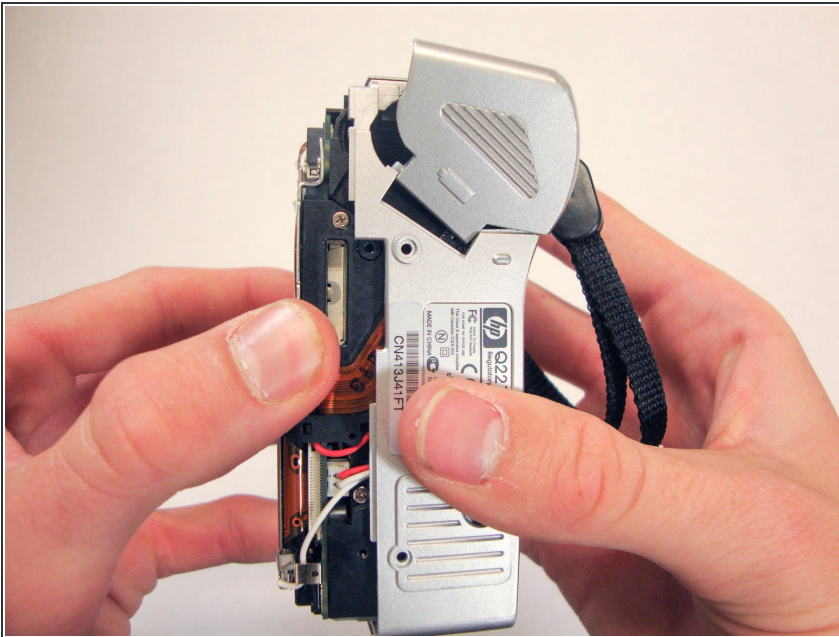
- Now on the side with the strap, remove the other four 4.70mm screws.

Step 7



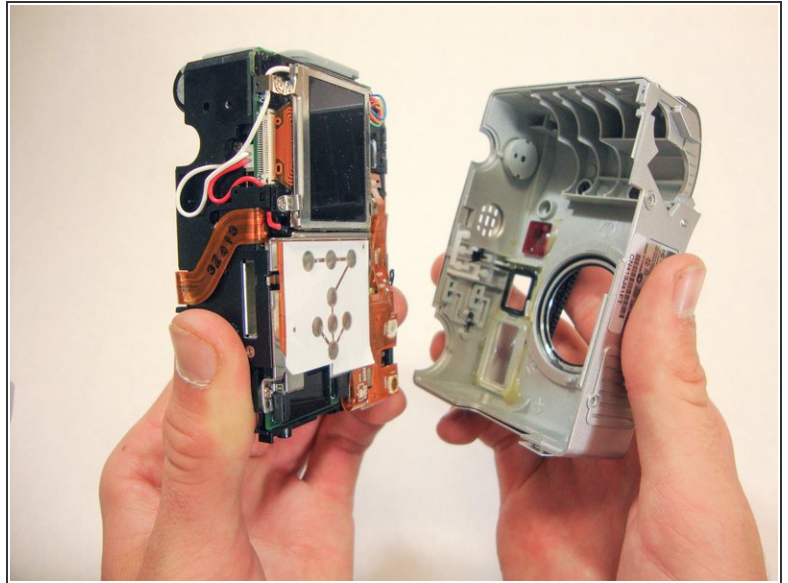
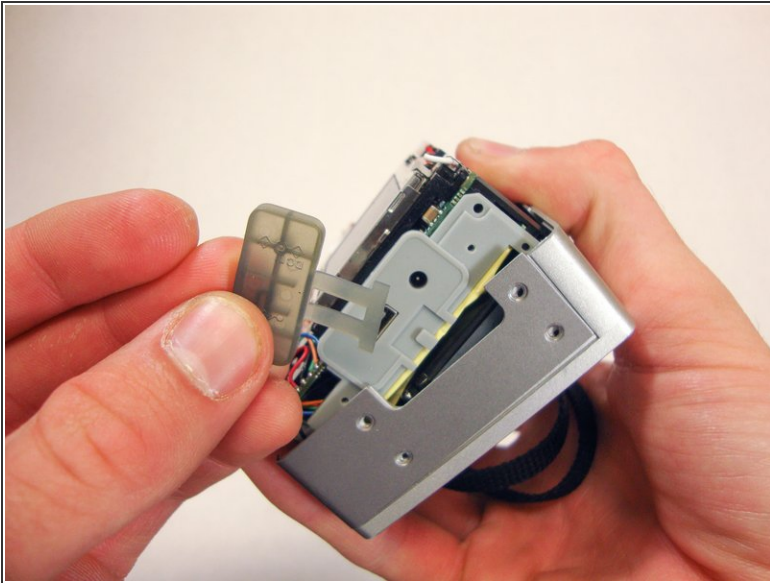
- Use your thumbs to pry the case apart.
- i* It is easiest to pry to case apart if your start at the bottom.
- i* The case should come apart with minimal effort. If it doesn't, you can use a tool such as a Spudger or Plastic Opening tool.



Step 8



- !* This step requires a significant amount of force.
- Pull the bottom half of the inner camera out of case about half an inch. This may be difficult and force is necessary.

Step 9



-  While pulling the camera out of the case, note the small soft plastic cover on the side of the camera. This cover will detach from the rest of the device.
- Once the bottom of the inner camera is pulled out about an inch and a half, pull the device out completely.
-  When completely removing the device from the case, use a firm grasp with your hands for stability and control.

To reassemble your device, follow these instructions in reverse order.