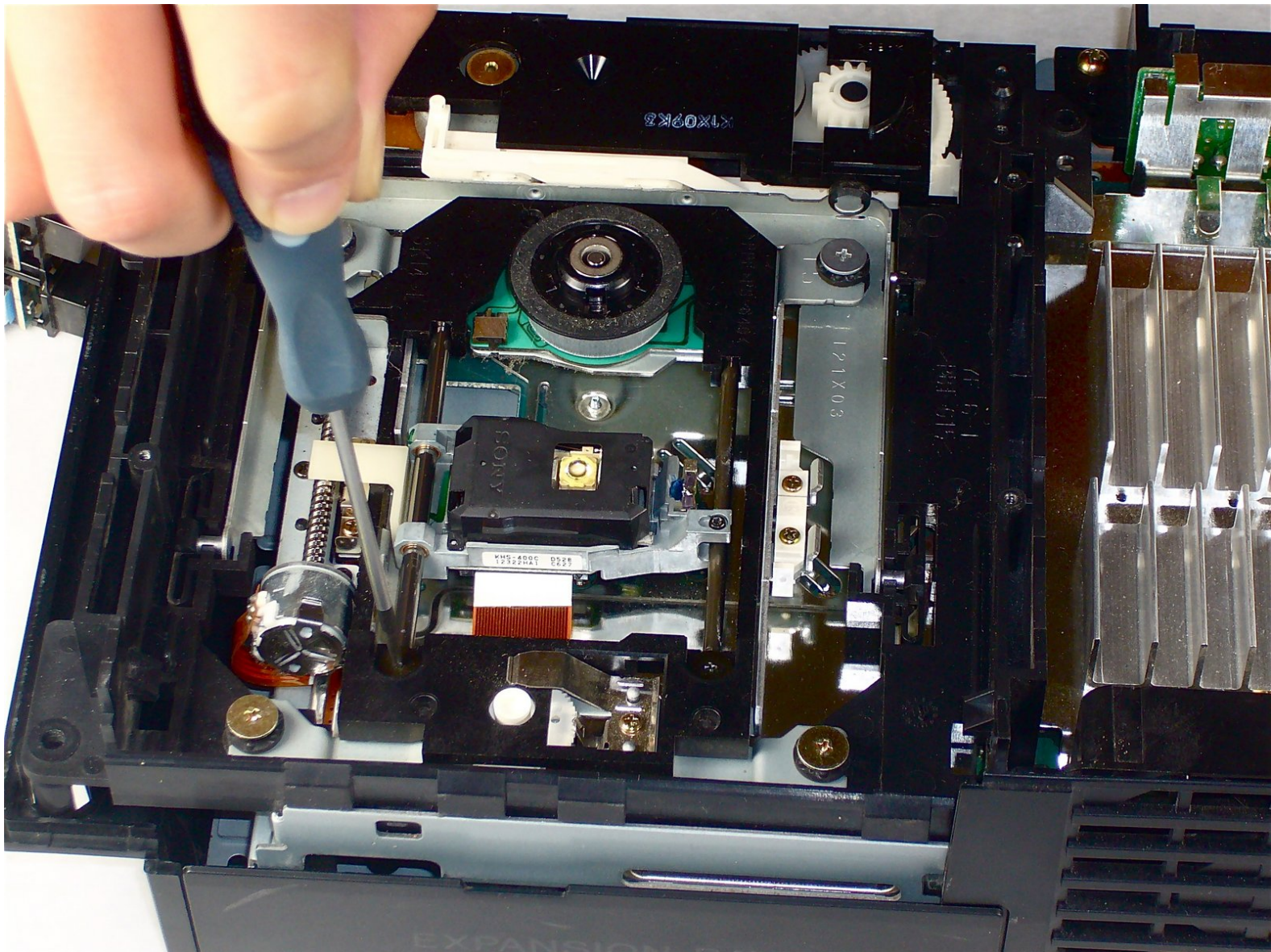




PlayStation 2 Optical Disc Drive Laser Assembly Replacement

Replace the laser assembly in your optical disc drive.

Written By: jwyoung



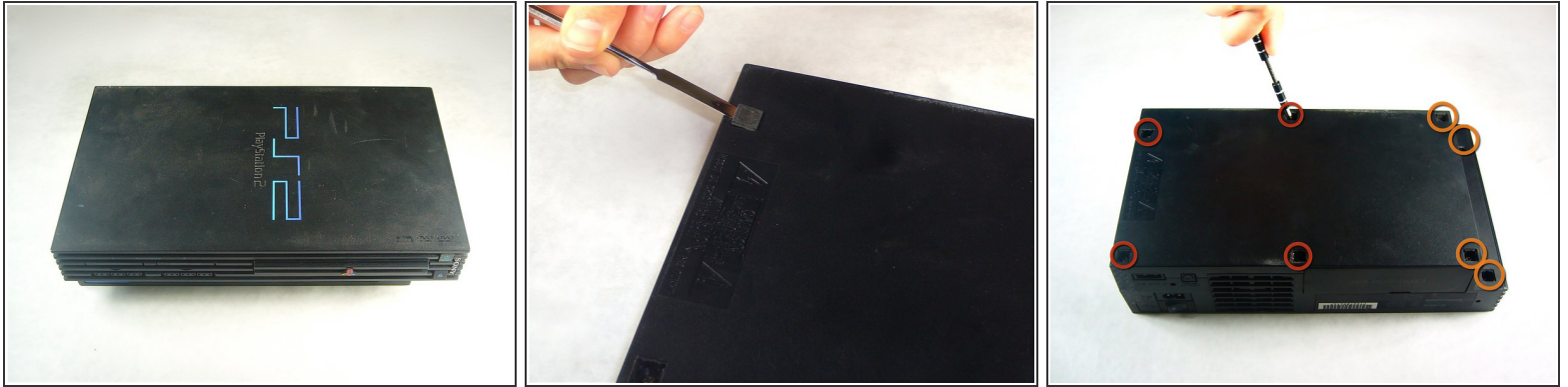
INTRODUCTION

Replace the laser assembly in your optical disc drive. Replacing the laser requires you to have or purchase a new laser.

TOOLS:

- [Metal Spudger](#) (1)
 - [Phillips #00 Screwdriver](#) (1)
 - [Phillips #1 Screwdriver](#) (1)
-

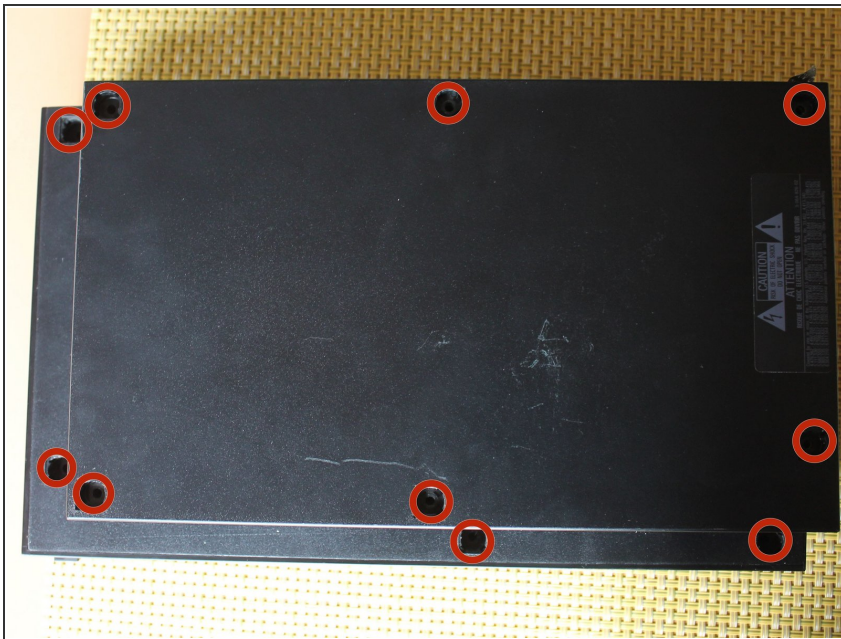
Step 1 — Top Cover



✦ Flip the PlayStation 2 over so it lays with the bottom of the device facing upwards.

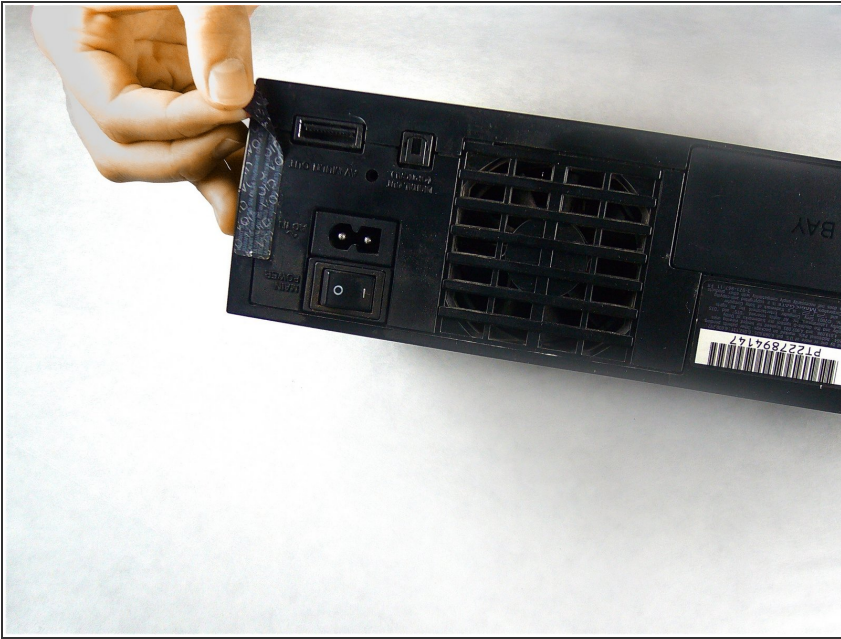
- Use the flat edge of a metal spudger to pry the eight flat screw covers out.
- Remove the following eight screws securing the top cover to the bottom case:
 - Four 55.4 mm Philips screws
 - Four 18.0 mm Phillips screws

Step 2



- Some models have a different number of screws and feet. Remove all the feet and screws in the bottom of the case.
- The 10 screw model has 6 screws in the bottom-most portion and 4 in the upper tray.

Step 3



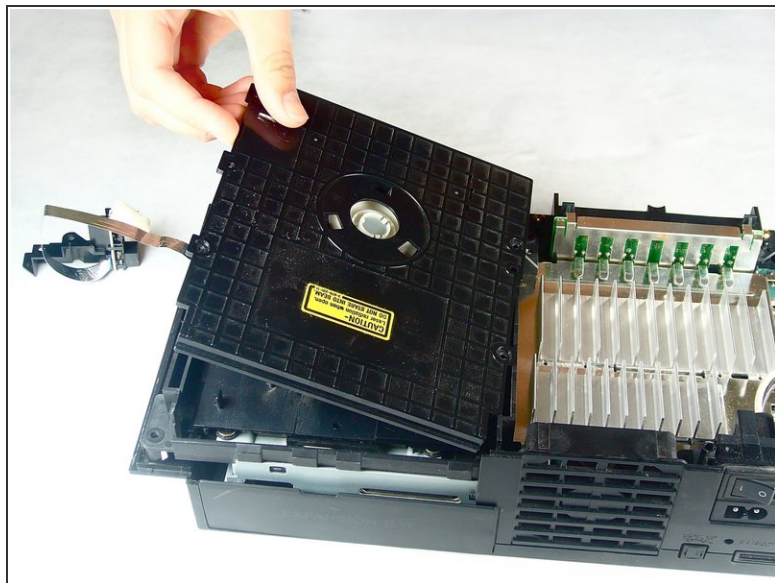
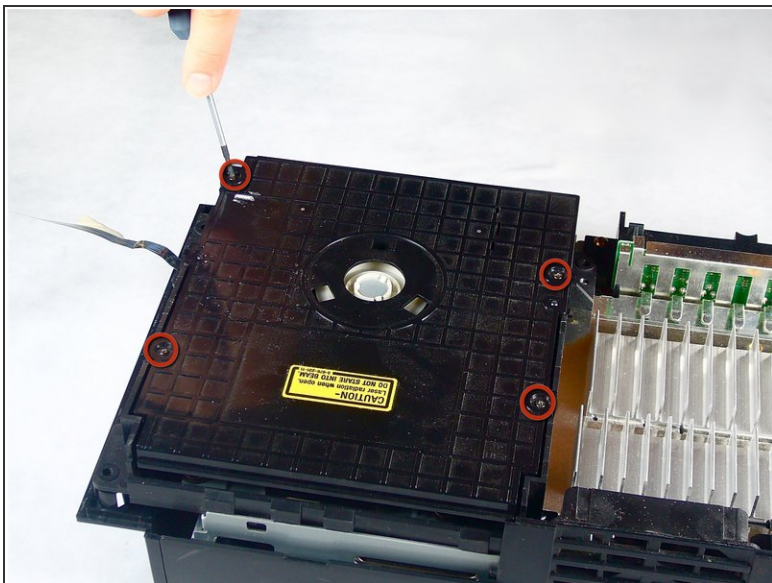
- Peel the warranty sticker (located next to the main power switch) straight away from the case.
- ⓘ To avoid activating the VOID that may come up, heat it carefully to remove and replace it clean

Step 4



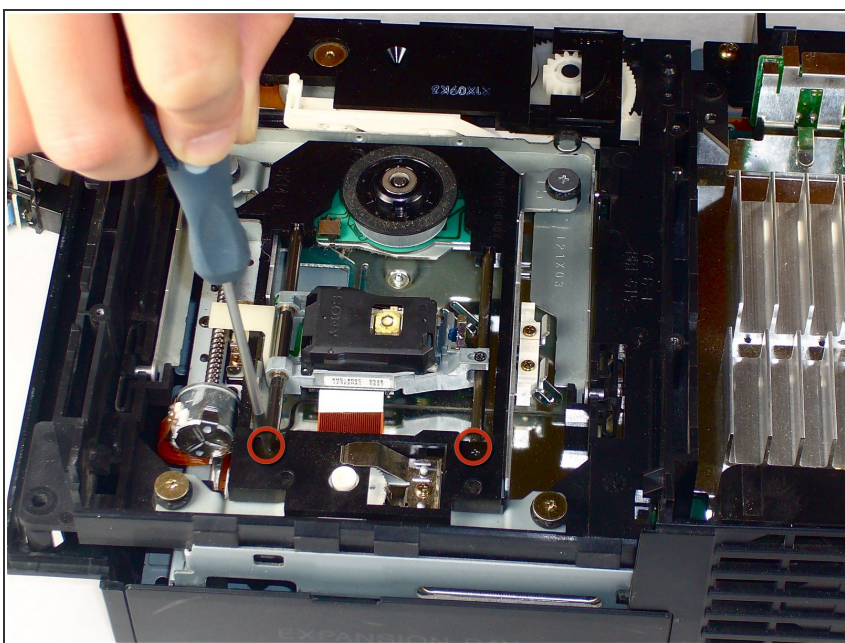
- ✦ Flip the PlayStation 2 back to its original upside position.
- Lift the top cover off the bottom case.
- ⓘ To facilitate the removal, it is recommended to pry open the half closer to the power switch first while rocking the top cover towards the front of the bottom case.
- Carefully remove the power cord that attaches the top and bottom halves by disconnecting the power cord assembly from the bottom case.

Step 5 — Optical Disc Drive Laser Assembly



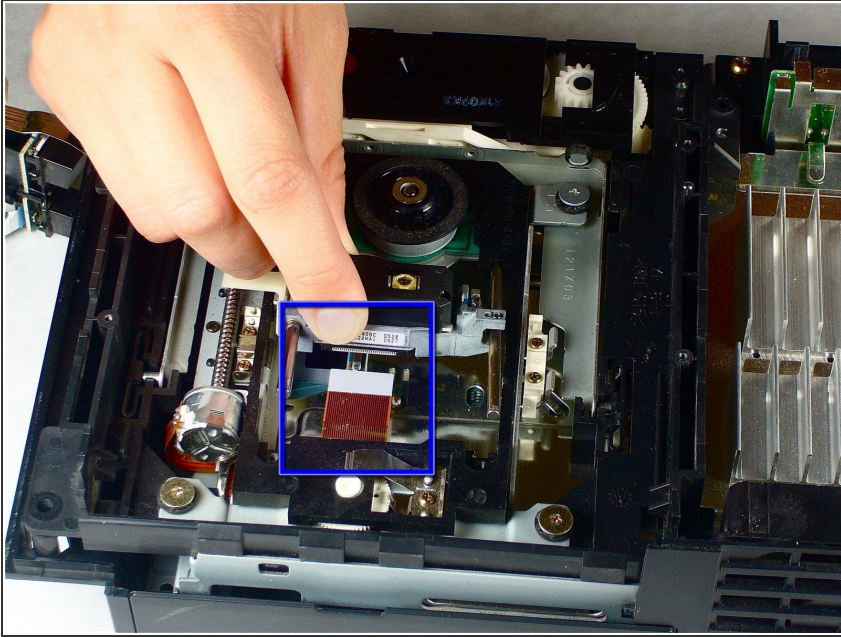
- Remove the four 6.4 mm Phillips screws securing the top lid of the optical disc drive.
- Lift and remove the lid from the optical disc drive.

Step 6



- Remove the two 7.2 mm Phillips black screws securing the metal silver rails that hold the laser in place.

Step 7



- Use your fingernail to flip up the retaining flap on the optical disc drive laser ribbon cable.
- ⚠ Be sure you are prying up on the movable retaining flap, not the socket itself.
- Pull the optical disc drive laser ribbon cable straight away and out of its socket.
- ★ If you maneuver the unscrewed ends of the metal rails upwards, the laser will slide out.

To reassemble your device, follow these instructions in reverse order.