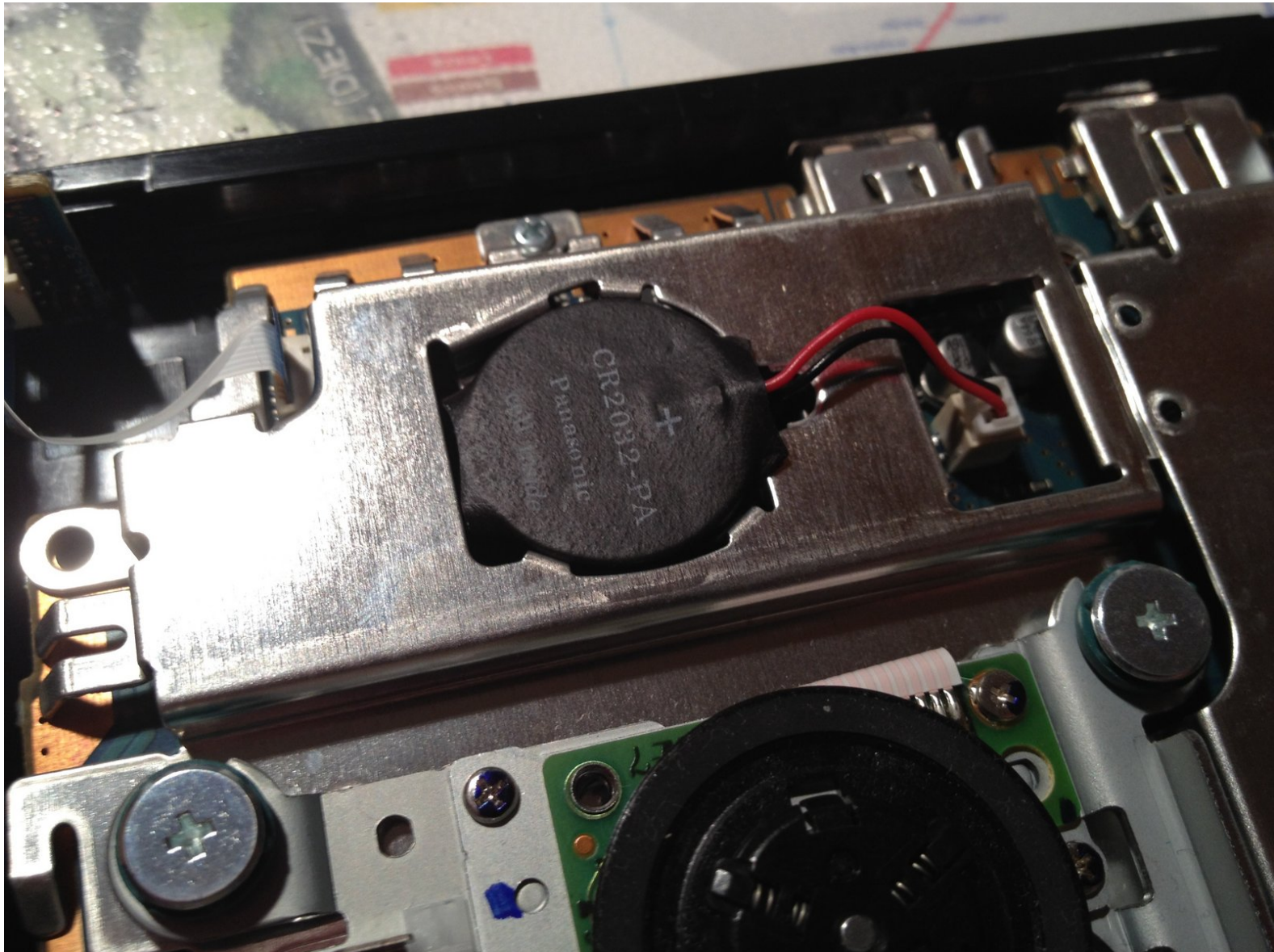




PlayStation 2 Slimline CMOS Battery Replacement

How to replace the PS2 Slimline motherboard battery

Written By: tloesner





TOOLS:

- [Metal Spudger](#) (1)
 - [Phillips #1 Screwdriver](#) (1)
-

Step 1 — CMOS Battery



- Remove all five screws on the downside of the PS2 Slimline

⚠ Remove the "Do not void" seal carefully, underneath is the fifth screw located.

Step 2

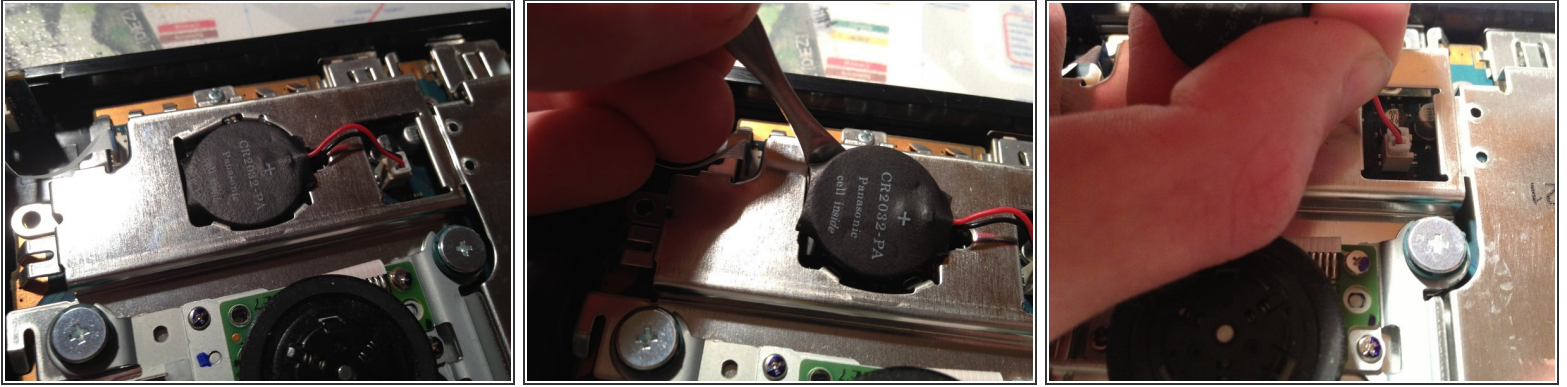


- ⓘ Make sure all screws are removed

⚠ Caution with the seal, do not forget.

- Then take a metal sponger and open the chassis

Step 3



- i Locate the battery on the motherboard
 - Use a metal spunger to peel it up
 - Pull the cable and the battery is removed, ready to replace

To reassemble your device, follow these instructions in reverse order.