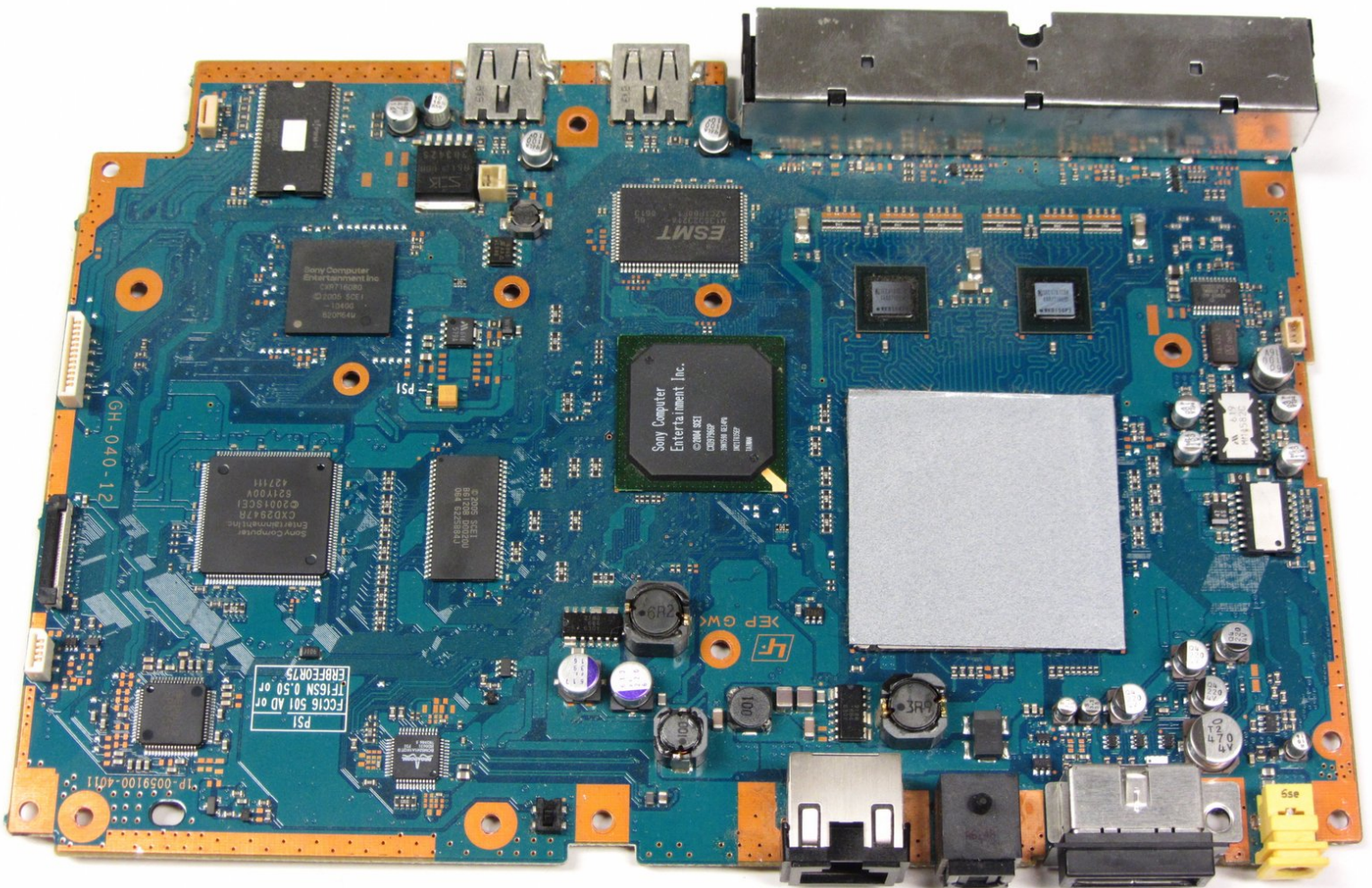




PlayStation 2 Slimline SCPH-7500x Motherboard Replacement

This is a step-by-step guide on how to replace and install the motherboard in the PlayStation 2 Slimline.

Written By: Jared Hirata



INTRODUCTION

This guide will walk you through step-by-step on how to properly remove and install the motherboard in the PlayStation 2 Slimline.



PARTS:

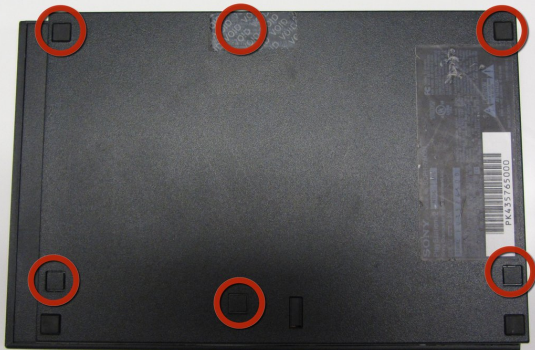
- [Phillips #1 Screwdriver](#) (1)
 - [Spudger](#) (1)
 - [Tweezers](#) (1)
-

Step 1 — Removing Playstation 2 Slimline SCPH-7500x Outer Shell



- Turn off the PlayStation 2 (or PS2) and carefully unplug from the power source. Check to see there are no discs inside the console before flipping the game system upside-down.

Step 2



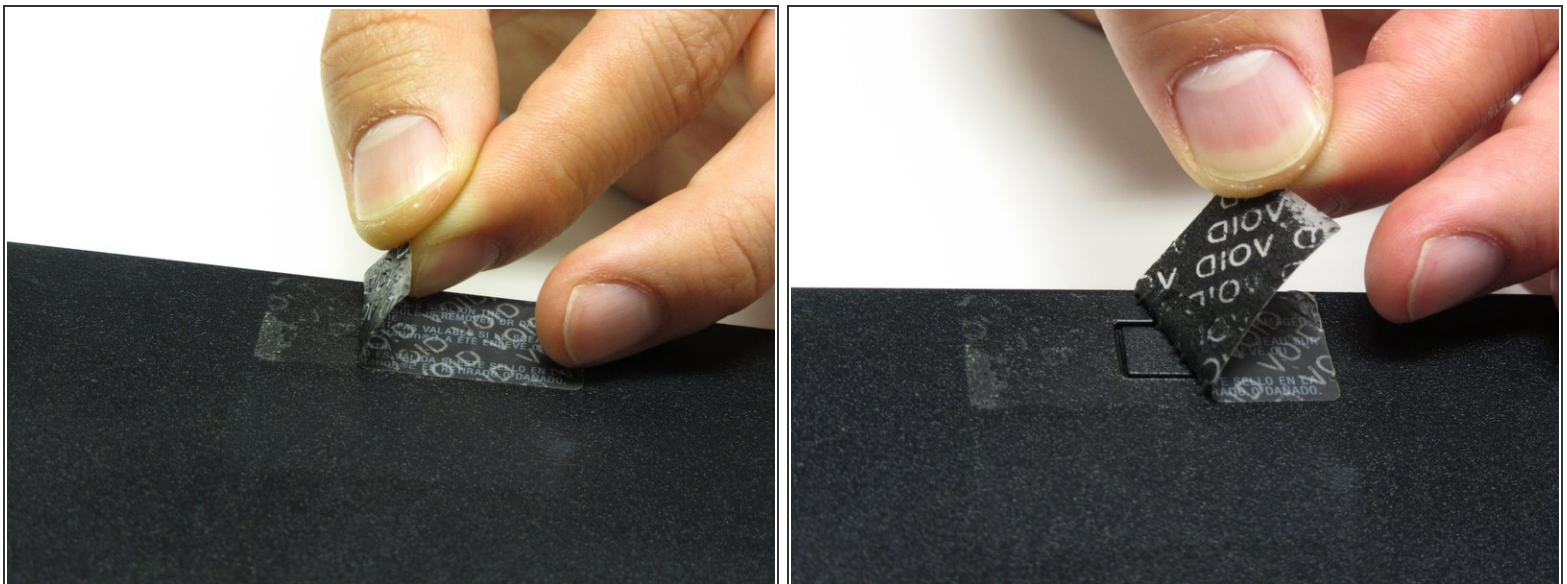
- Locate the six feet on the bottom of the PS2.
- ⓘ Five of the feet are in plain sight and one of the feet is located under the black void sticker on the bottom of the device.
- ⚠ **IMPORTANT:** Removing the black VOID sticker will void the warranty of this device. Proceed at your own risk
- ⓘ Some versions of the console, such as the PAL Version, may not have this sticker. In this case, the foot or even the screw should be in plain sight.

Step 3



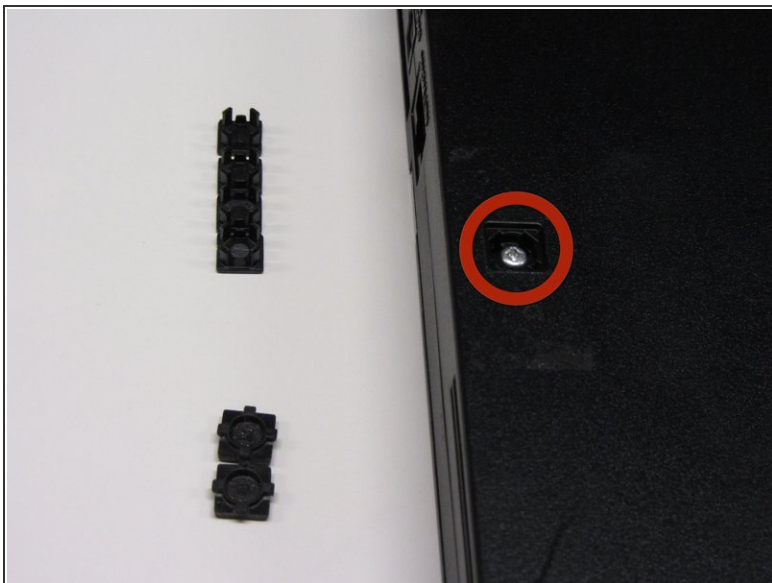
- Use a spudger, flathead screwdriver, or fingernail to pry the five visible feet from the bottom of the device.

Step 4



- The sixth foot is located under the black VOID sticker. Remove the sticker before removing the foot underneath.

Step 5



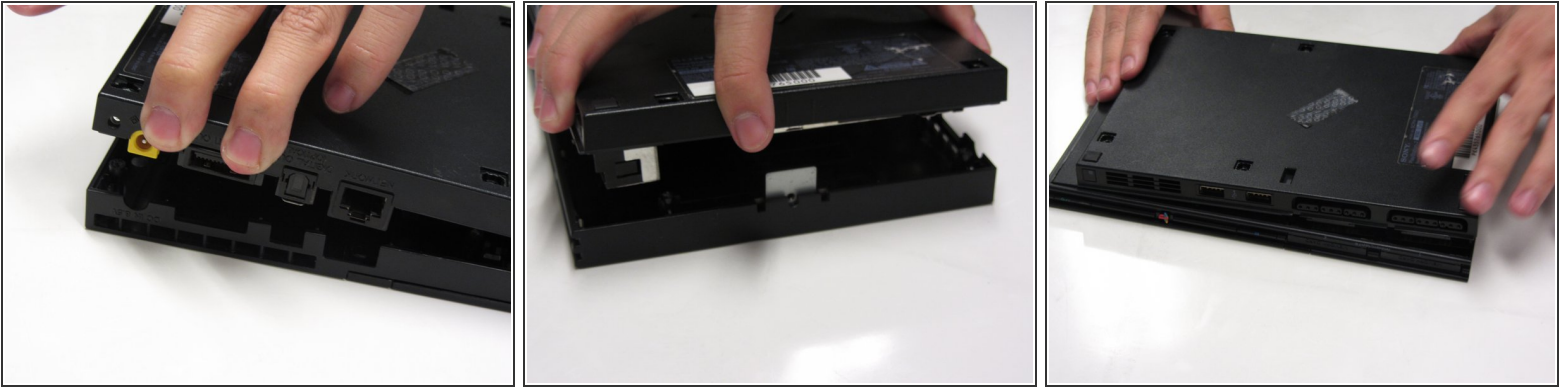
- After all of the feet have been removed, locate the six 4.0mm screws on the base of the PS2.

Step 6



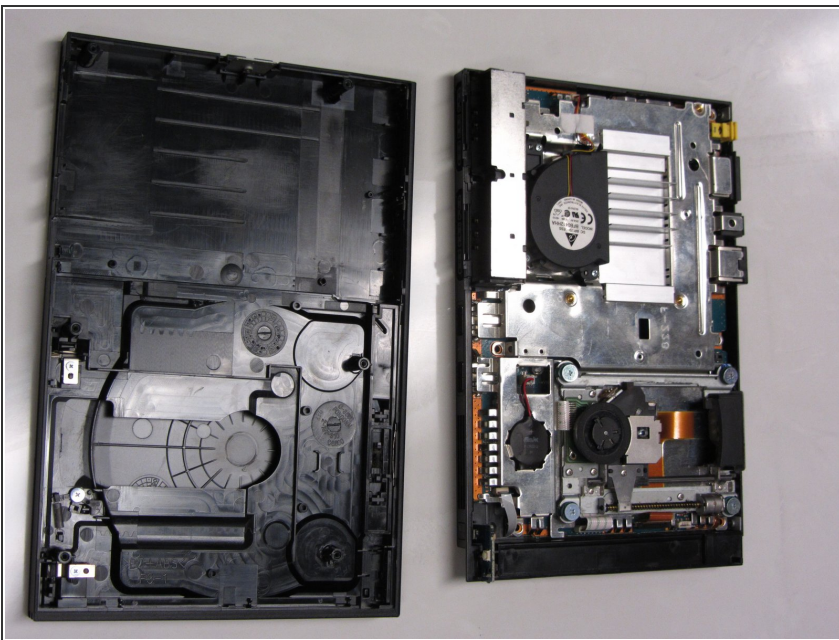
- Use a #1 Phillips screwdriver to unscrew all six 4.0mm screws from the base of the PS2.

Step 7



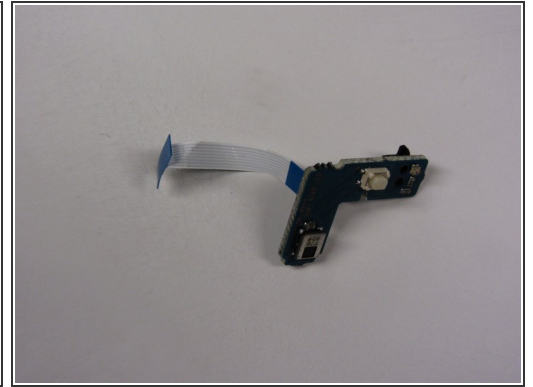
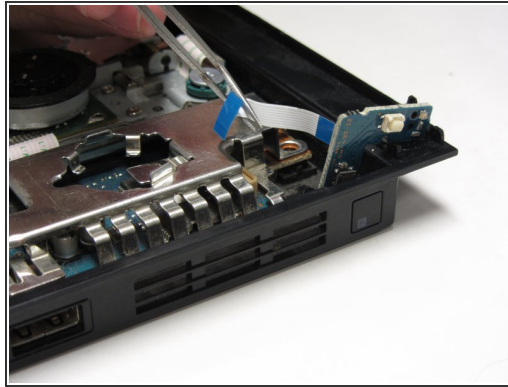
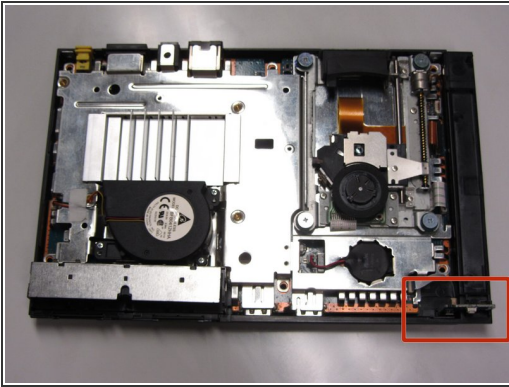
- i** Once all of the screws have been removed, pull apart the top plastic cover from the bottom plastic cover. Start by lifting the side containing the power cable and Ethernet port. Then, lift the opposite side to fully separate. It will take force to pull apart the two halves.

Step 8



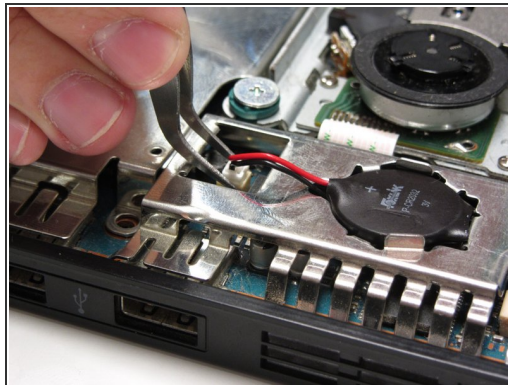
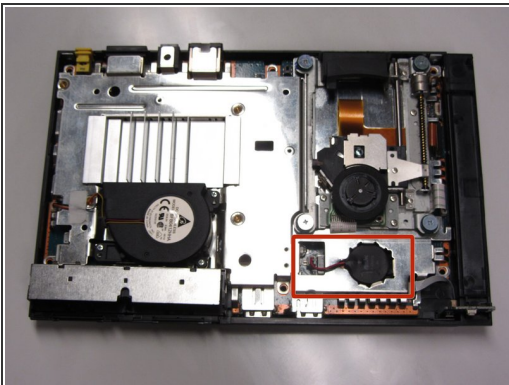
- If done correctly, you should have a fully detached plastic backing, revealing the electronic components of the PlayStation 2.

Step 9 — IR Sensor



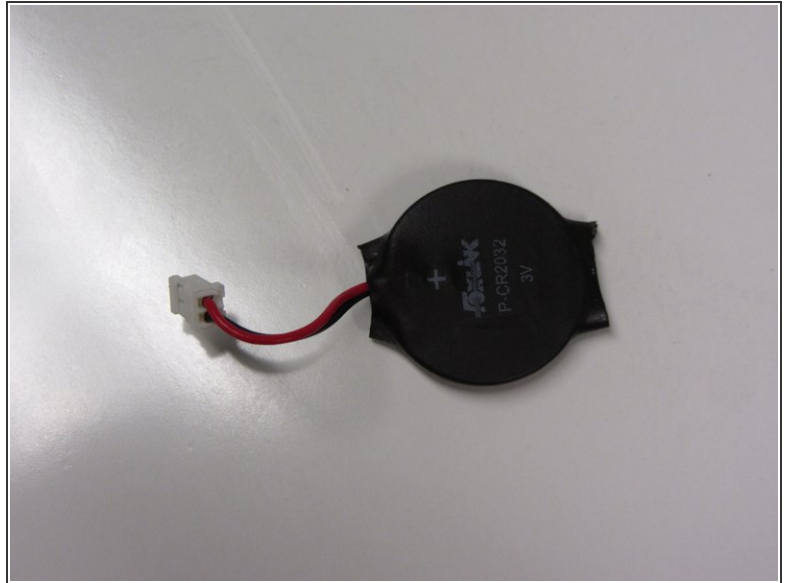
- Locate the IR sensor on the motherboard. Once you locate the IR sensor, use tweezers to gently detach the blue/white ribbon that attaches the IR sensor to the motherboard.

Step 10 — Clock Battery



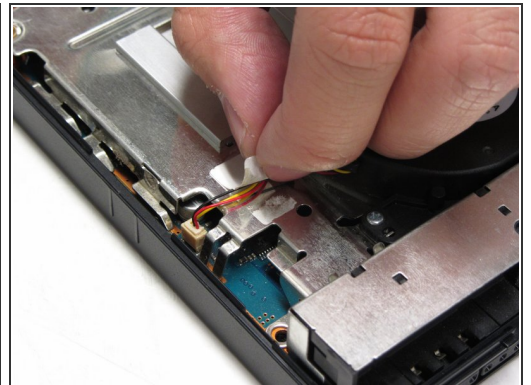
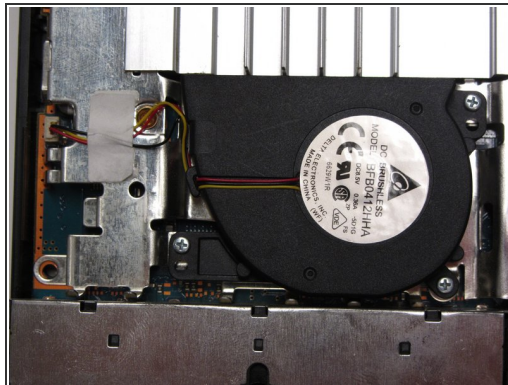
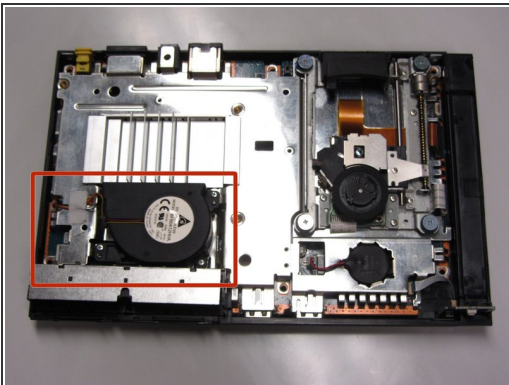
- Locate the clock battery. Take tweezers and lift up the connector from the motherboard.

Step 11



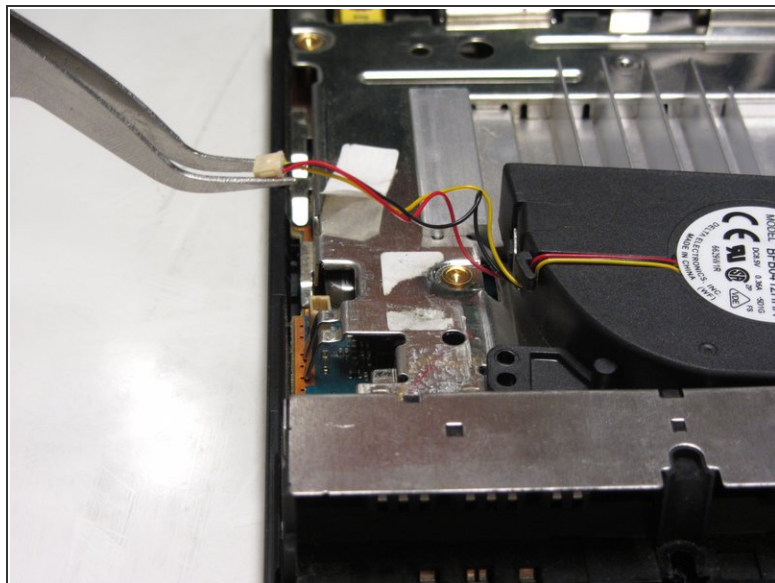
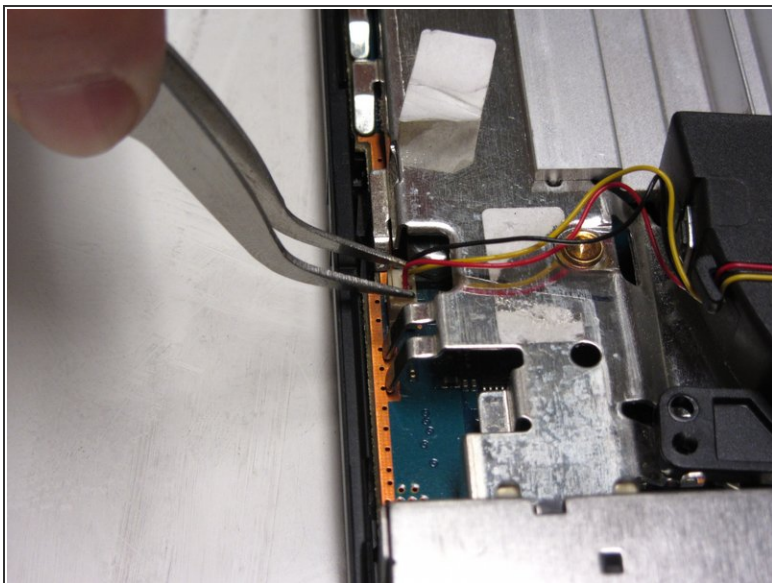
- Gently lift up the battery from the battery compartment.

Step 12 — Fan



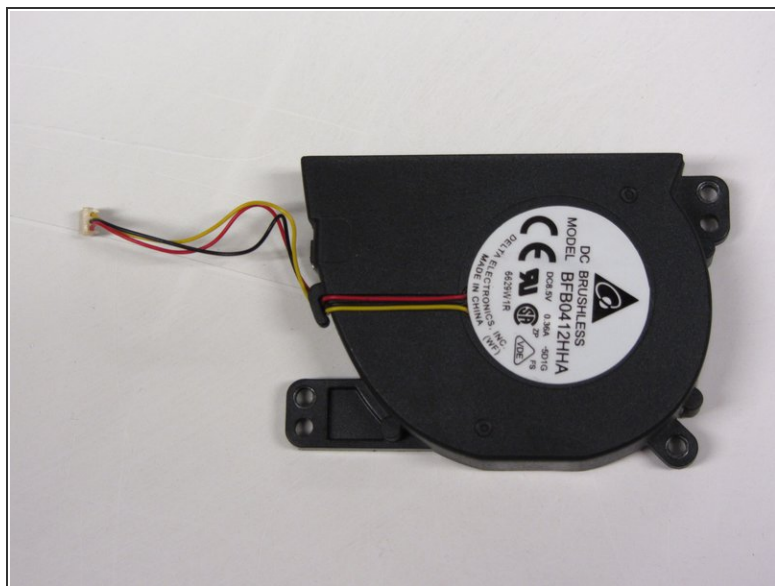
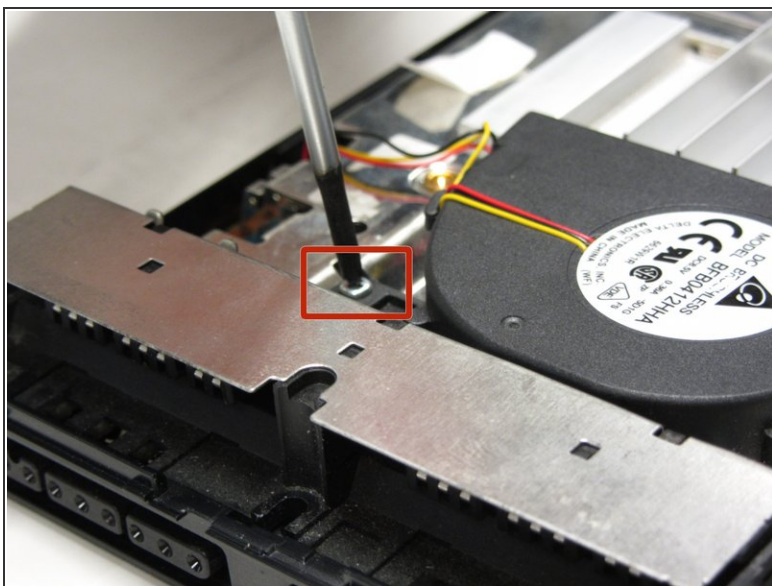
- Locate the fan component of the motherboard of the PS2. With your fingers or tweezers, peel off the sticker that holds down the fan's wiring.

Step 13



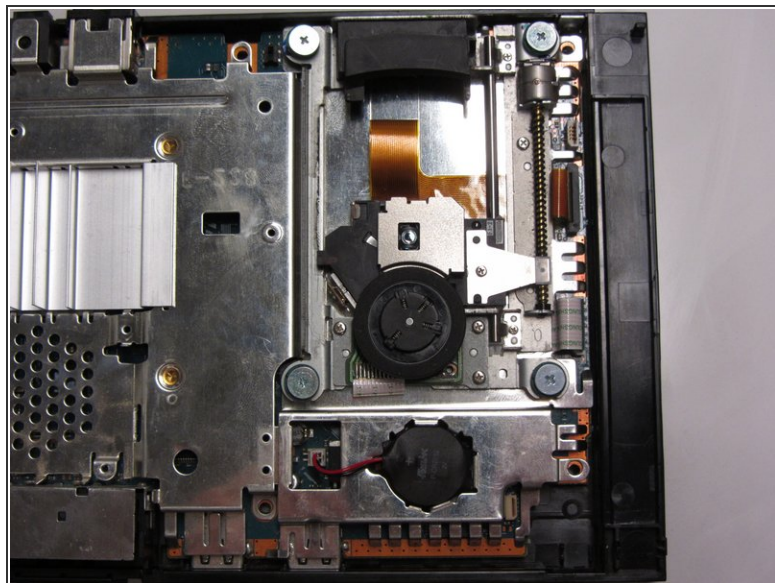
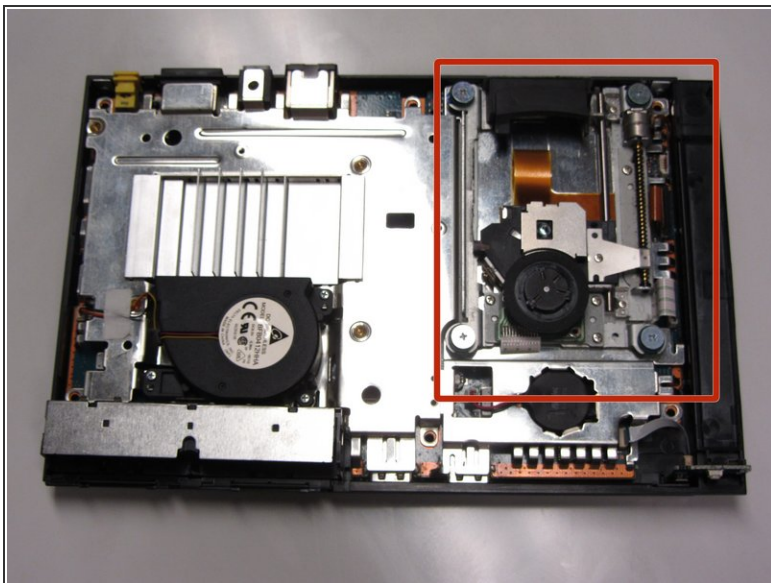
- With tweezers, detach the terminal to the cord from the motherboard to the fan.

Step 14



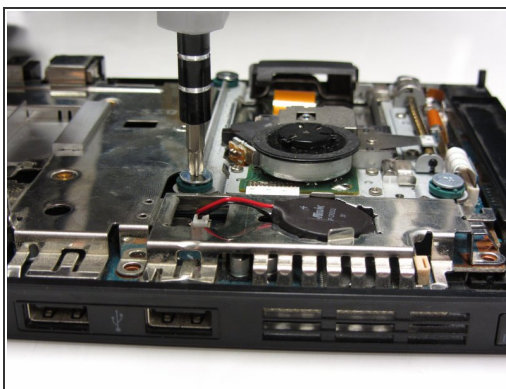
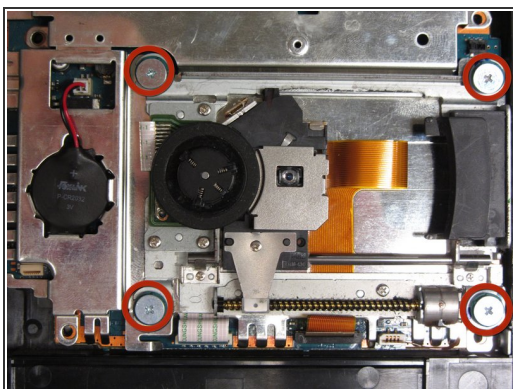
- Locate and unscrew the three 1.6mm screws located next to the base of the fan.

Step 15 — Optical Drive



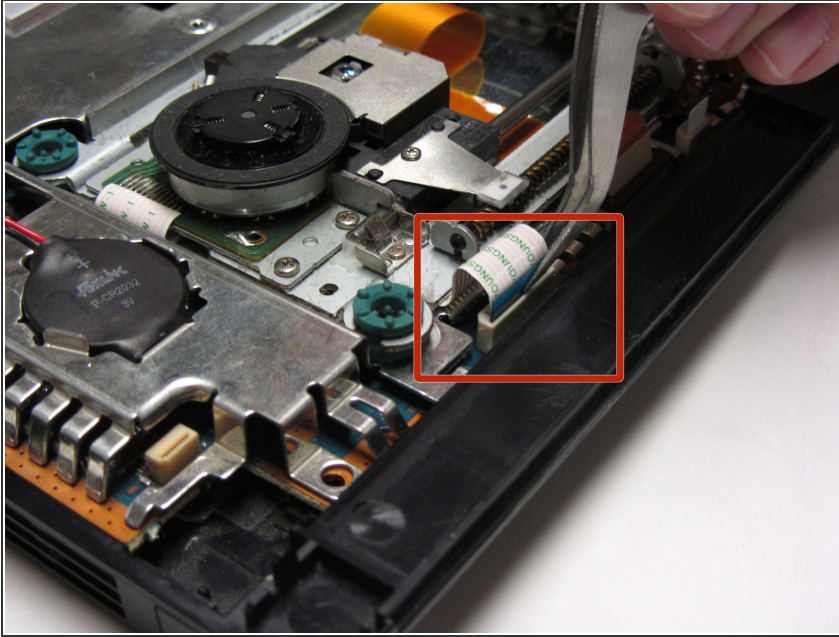
- Locate the optical drive on the motherboard.

Step 16



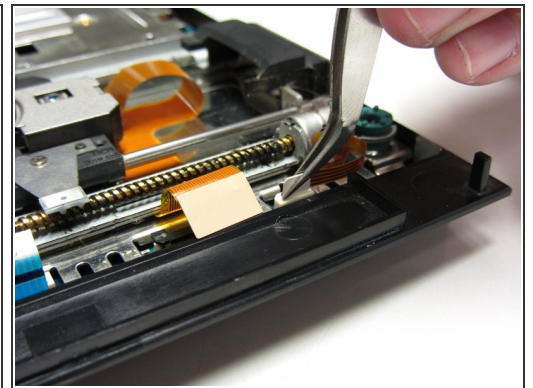
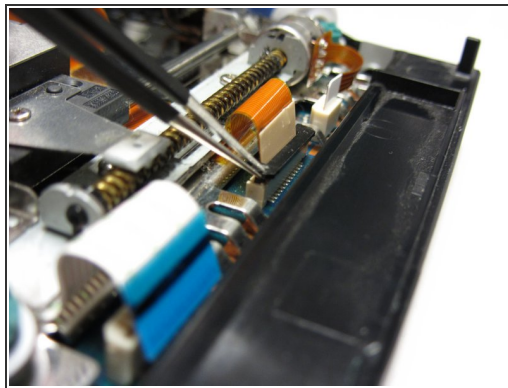
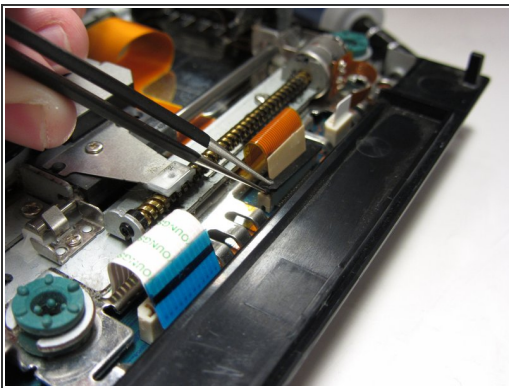
- Unscrew the four 4.0mm screws that mount the optical drive to the motherboard.

Step 17



- Locate the three ribbons that are attached to the motherboard.
- ⓘ Note: These ribbons are different sizes: one large, one medium and one small sized ribbon.

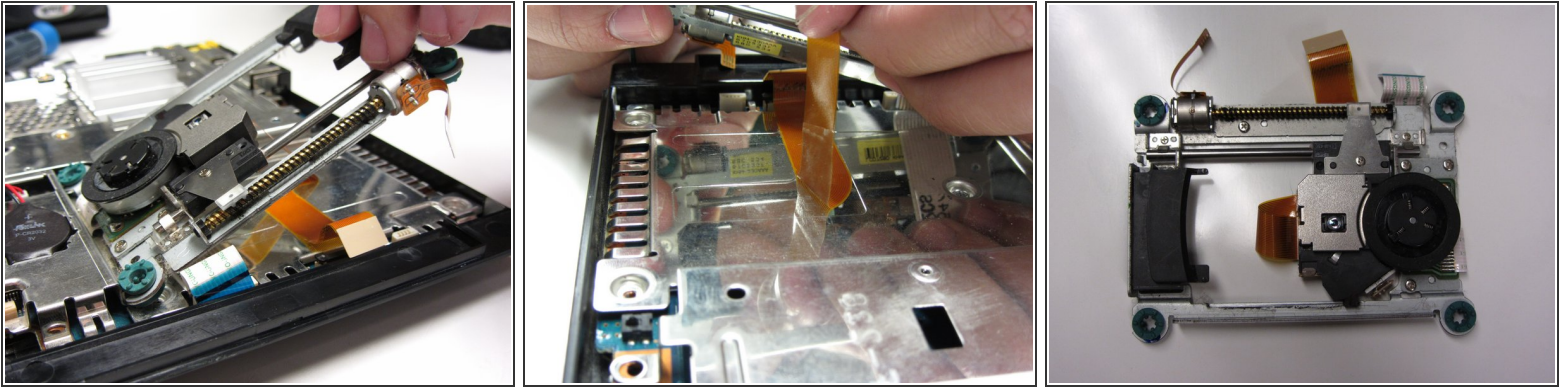
Step 18



- With tweezers, gently detach all three ribbons from the motherboard terminal. Unlock the middle orange ribbon by using tweezers to lift the black tab up on either side.

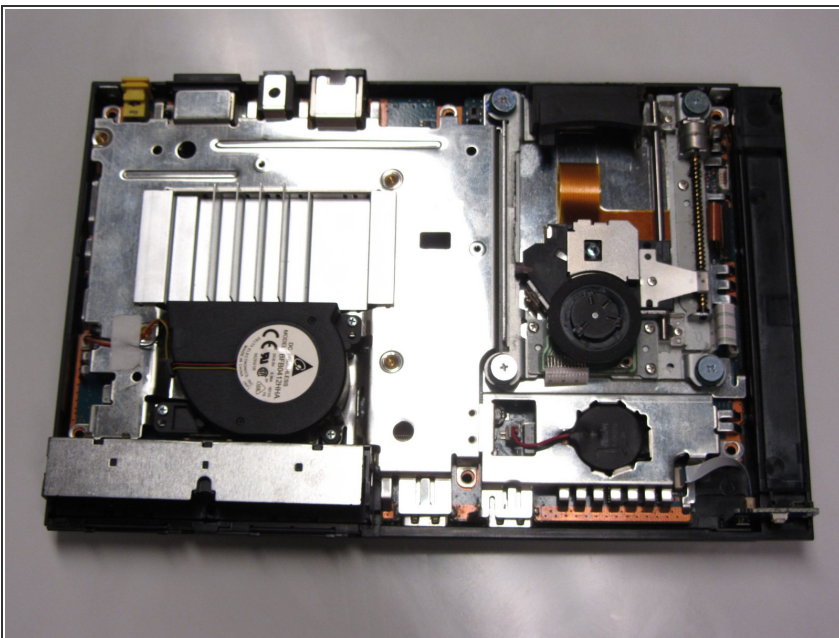
⚠ IMPORTANT: The orange ribbon is glued to the metal chassis. Gently pull the ribbon upward to make sure that you don't rip it.

Step 19



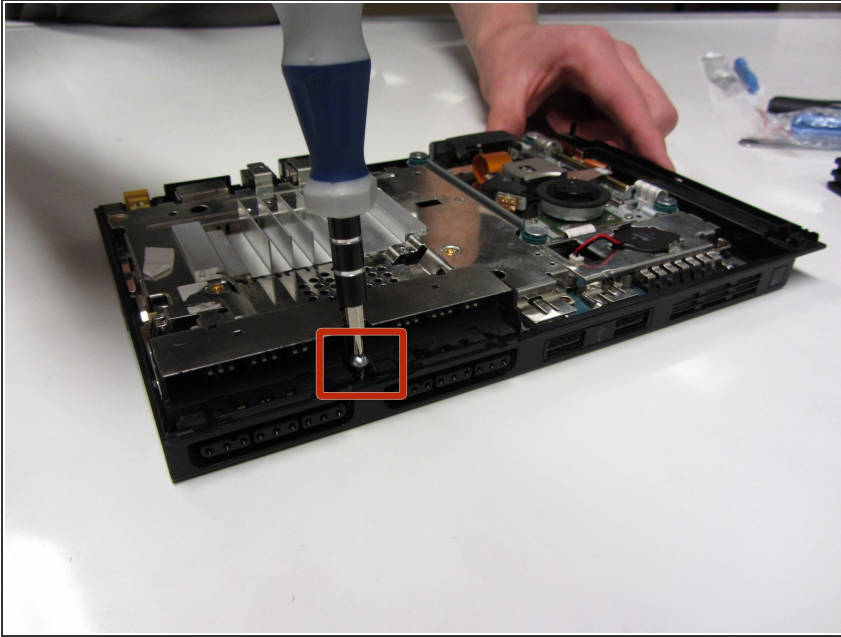
- Gently lift the optical drive away from the motherboard.

Step 20 — Motherboard



- What you see in this picture is the electronic components found in the PS2. We are now going to remove the top metal casing found on top of the motherboard.

Step 21



- Locate the one 2.4mm screw that mounts the metal casing to the top of the motherboard and unscrew the screw with a Philips Screwdriver.

Step 22



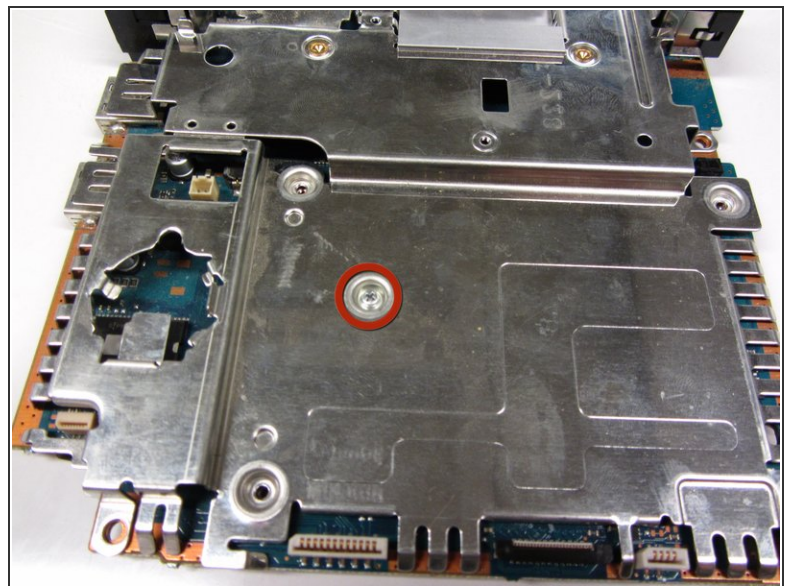
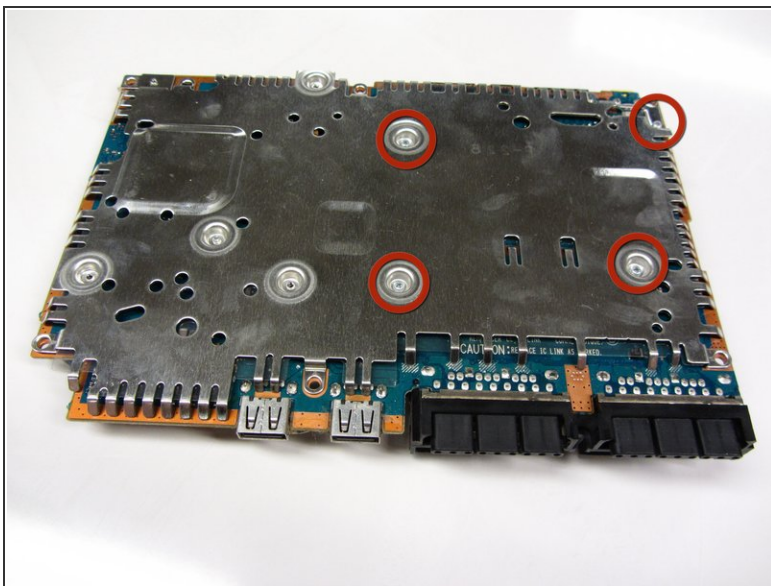
- Gently lift the metal casing from the motherboard and the motherboard from the plastic outer shell. After this step, you should have three separate components: The metal casing, the motherboard and the top half of the outer shell of the PS2.

Step 23



- i** Take the motherboard and flip it upside down. On the back of the motherboard, you should locate another metal plate that is attached to the back of the motherboard.

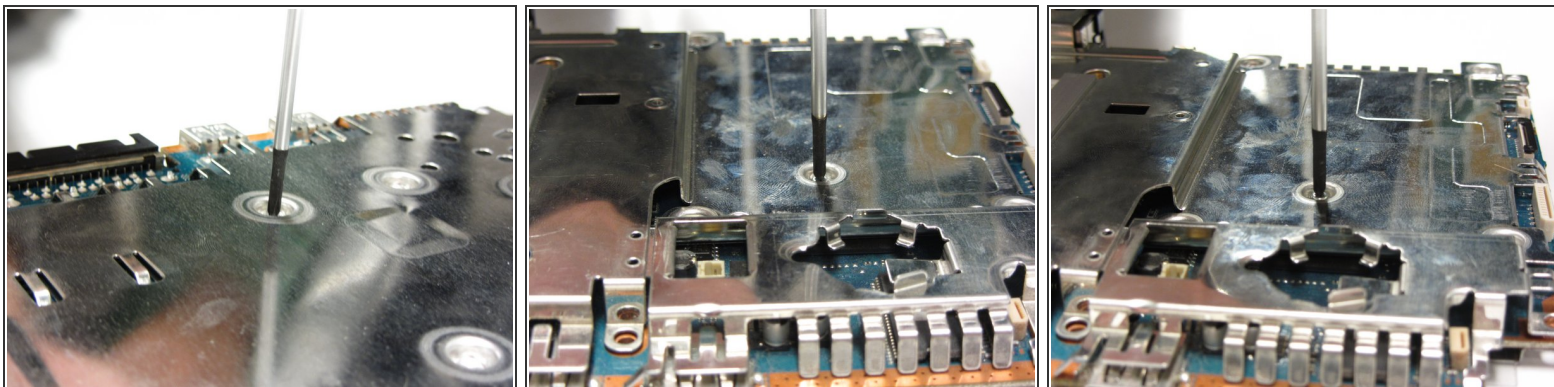
Step 24



- Locate the five 1.6mm screws that mount the metal plate to the motherboard.

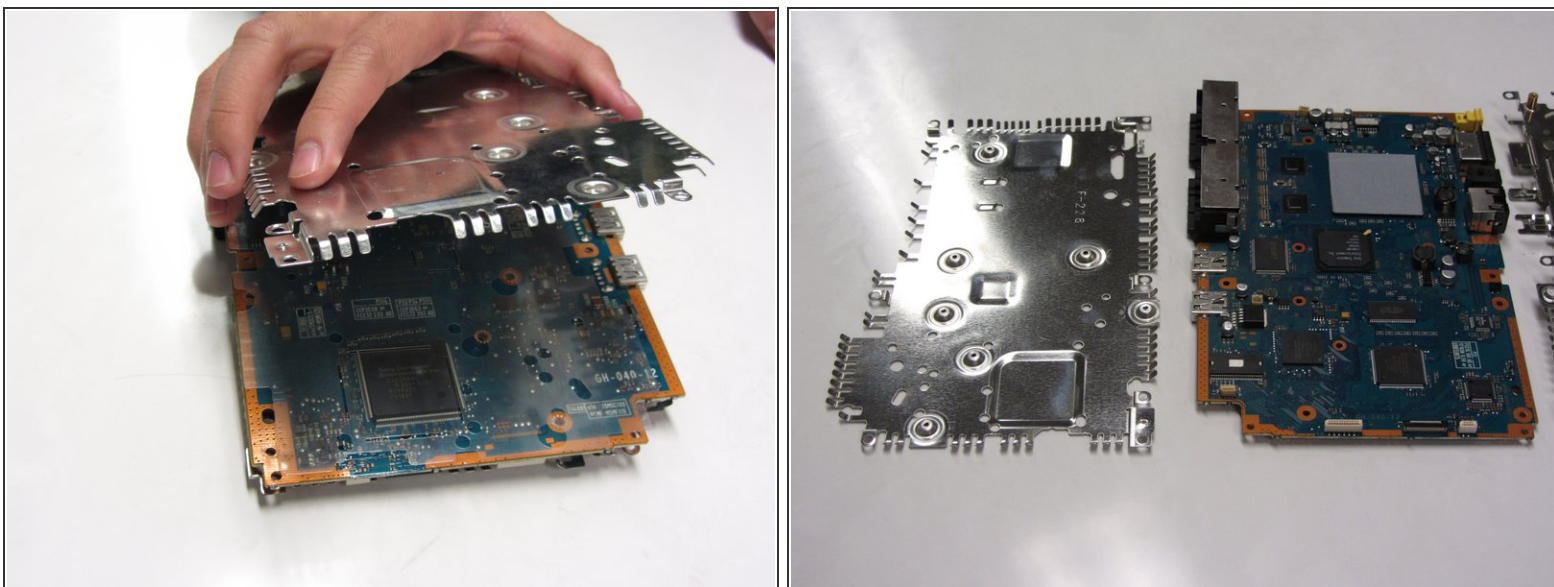
- i** Note that there are four on one side and one on the other.

Step 25



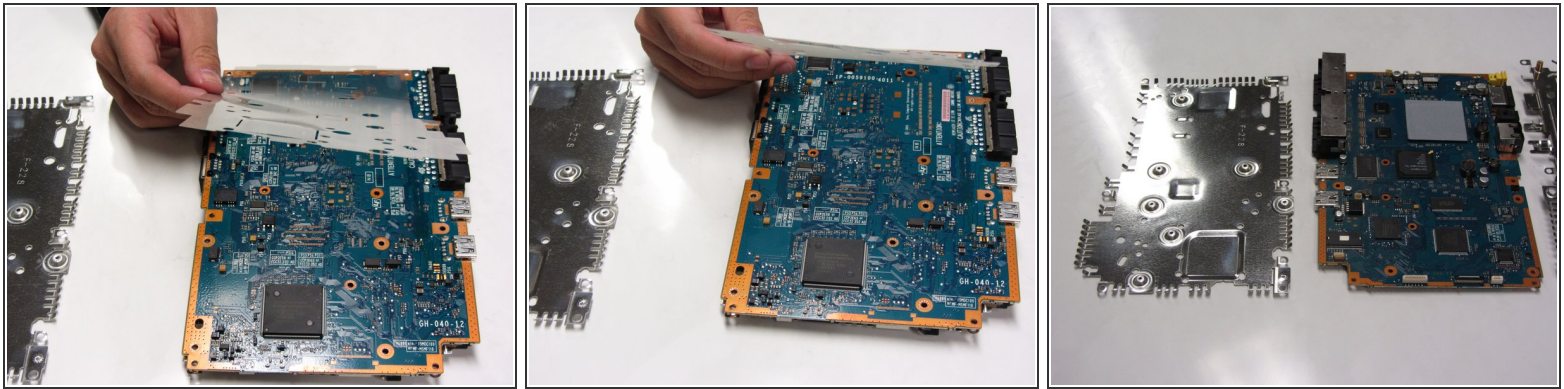
- Unscrew all five screws that mount the metal plate to the motherboard.

Step 26



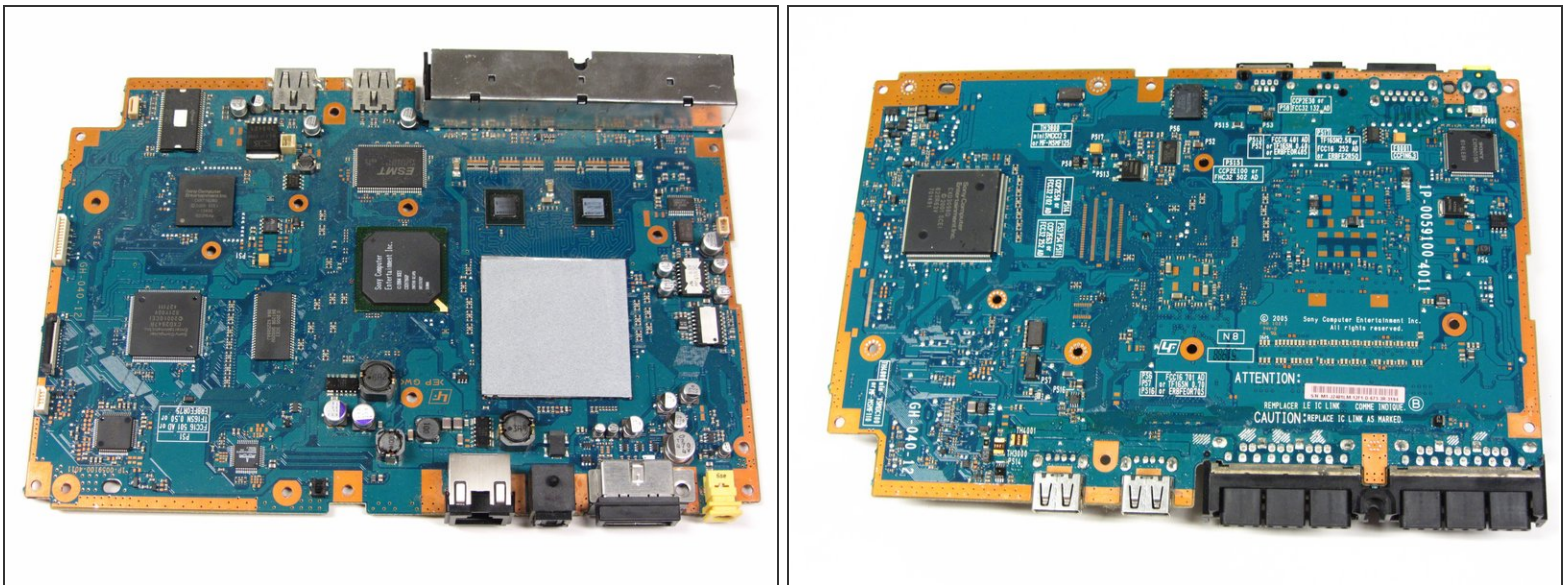
- Gently lift the metal plates from the top and the bottom of the motherboard.

Step 27



- Remove the plastic film that is sandwiched in between the metal plate and the motherboard.

Step 28



- After you have detached all the other components, it should look like the image shown.

To reassemble your device, follow these instructions in reverse order.