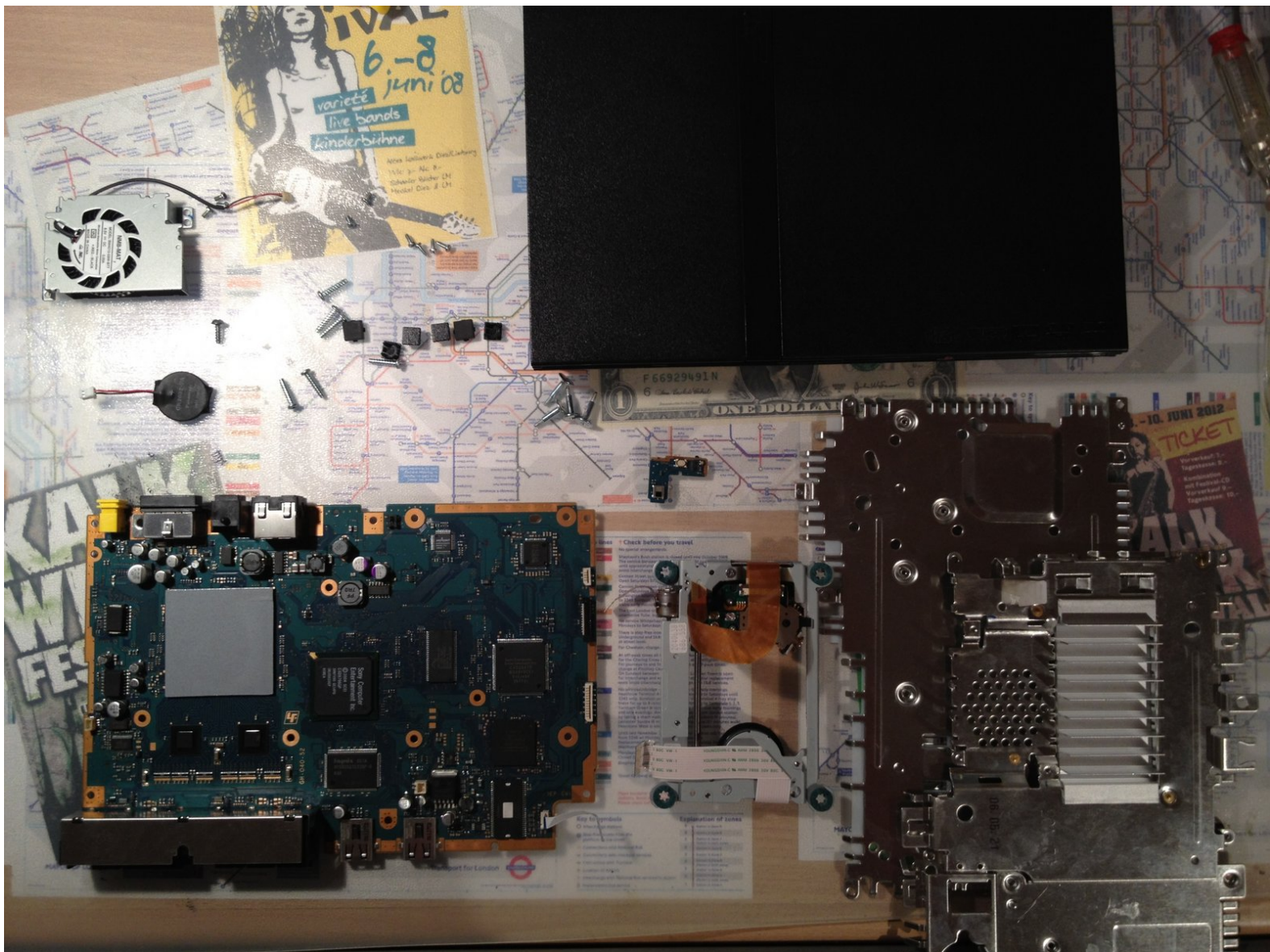




# PlayStation 2 Slimline Teardown/Disassembly

Complete teardown and disassembly of the PlayStation 2 Slimline. Difficulty: Difficult

Written By: tloesner



# INTRODUCTION

A general guide to takedown and disassemble the PlayStation 2 Slimline. This will give the user access to a number of internal components such as the motherboard, the optical drive, the cooling fan, and hard drive, among others.



## TOOLS:

- [Metal Spudger](#) (1)
  - [Phillips #00 Screwdriver](#) (1)
  - [Phillips #1 Screwdriver](#) (1)
-

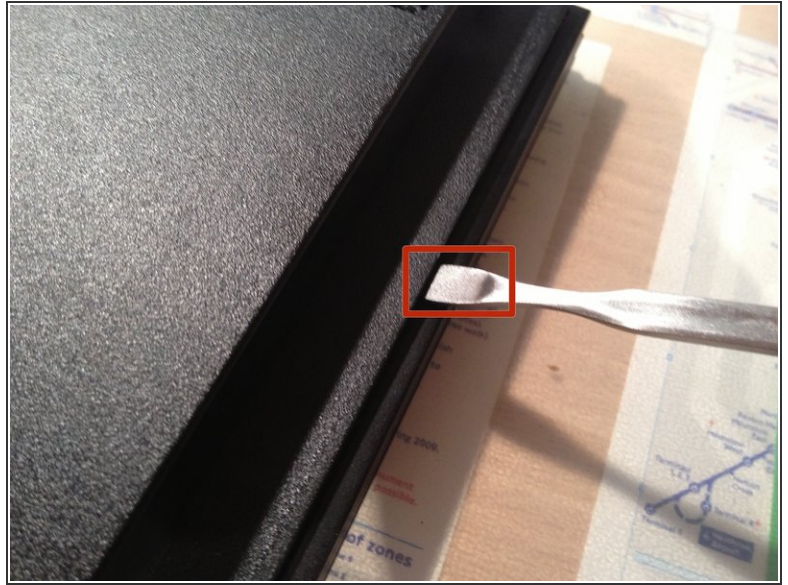
## Step 1 — PlayStation 2 Slimline Teardown/Disassembly



- On a flat working surface, flip the PlayStation 2 Slimline so that the bottom side is facing up.
  - Remove the covers over the screws, circled in red on the second image.
  - Take a Phillip's #1 screwdriver and remove the five screws circled in red on the second image.
- ⚠ You will have to remove the "Do Not Void" seal in order to remove the last screw.

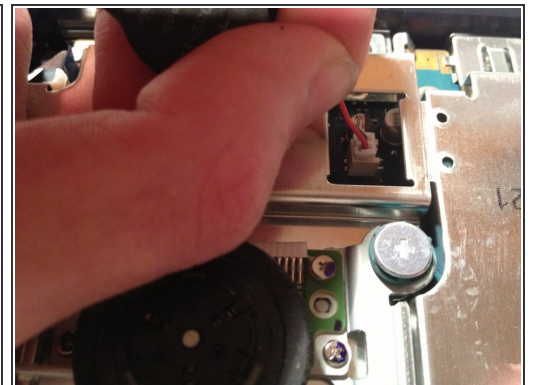
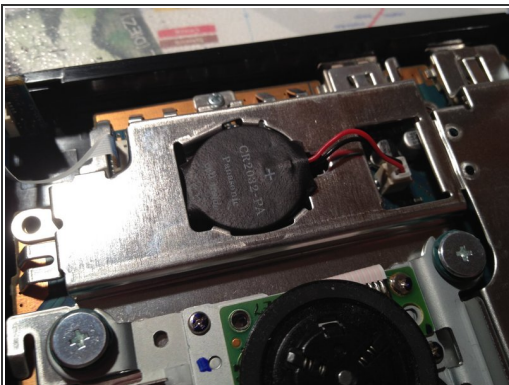


## Step 2



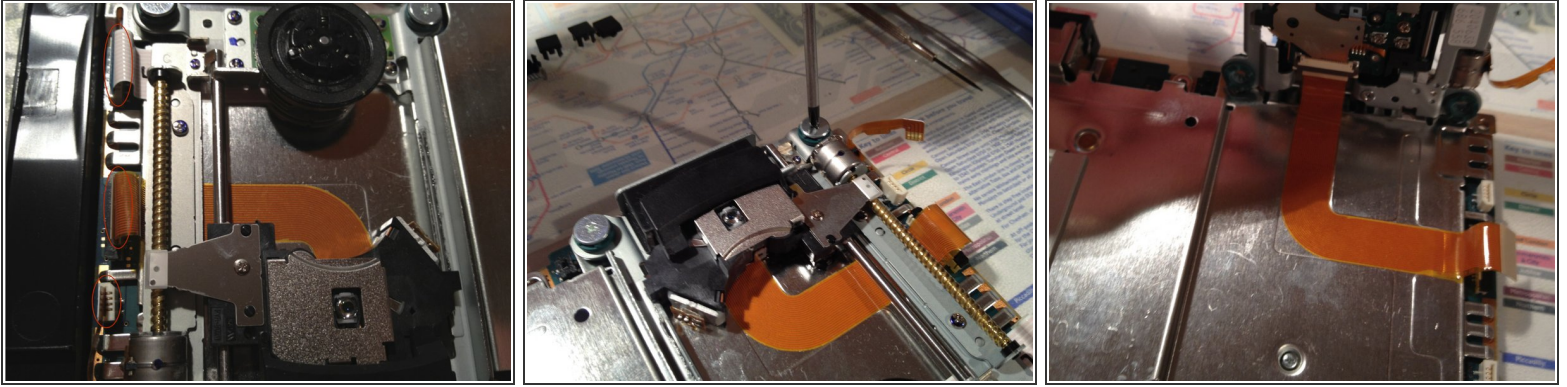
- ⚠ Make sure you haven't forgotten the screw under the "Do Not Void" seal.
- Take a metal spudger and separate the upper half of the chasis from the lower half.
- ⚠ For later models the DVD drive assembly is not screwed in and will fall off if you open it upside down.


## Step 3



- ⓘ With the chassis open you can see the motherboard and its attachments.
- Identify the battery, then use a spudger to pry it out. Disconnect the battery from the motherboard with your hands.

## Step 4

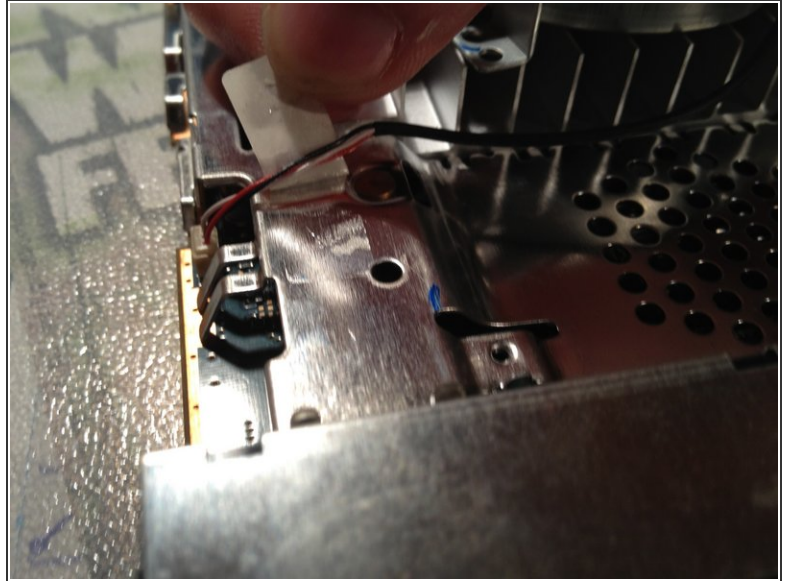
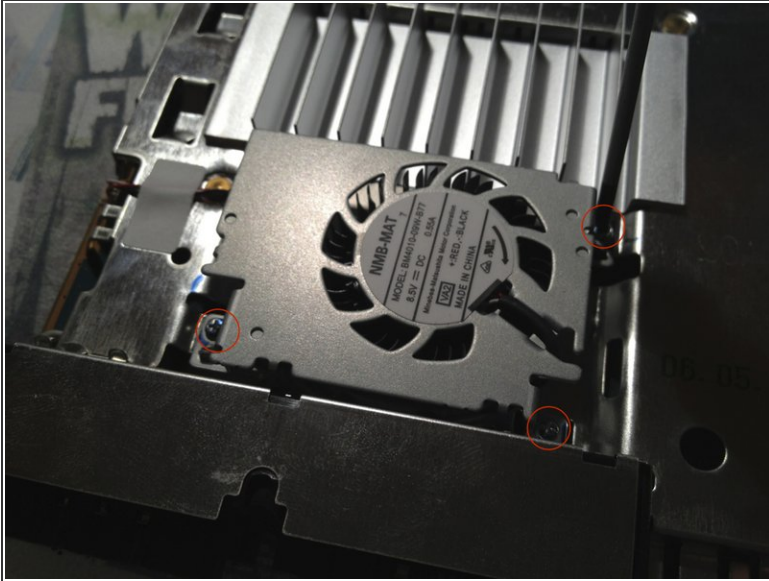


 Three cables connect the optical drive to the motherboard.

- Pull the flex cable out of its socket.
- Take a Phillips #1 screwdriver and remove the four screws on the optical drive.
- Pull up the optical drive and carefully peel the flex cable, attached underneath the drive, from the metal plate.



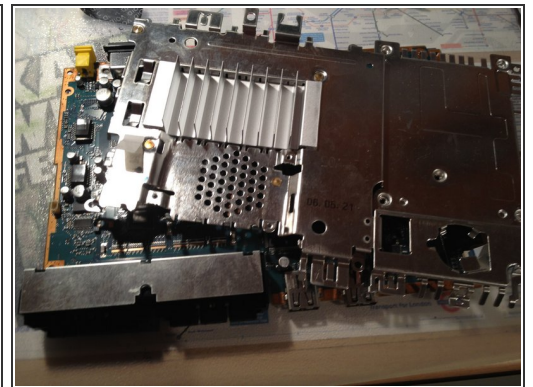
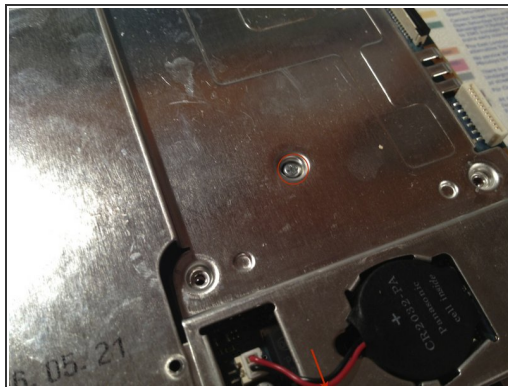
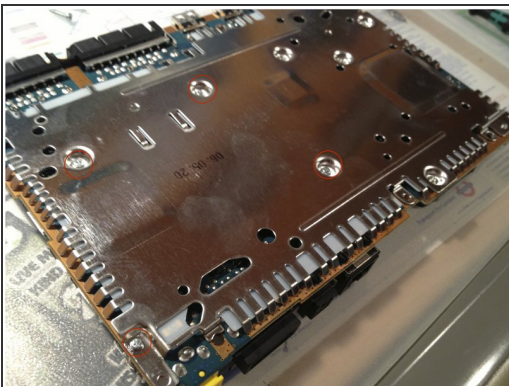
## Step 5



- i** The fan is secured with three PH00 screws.

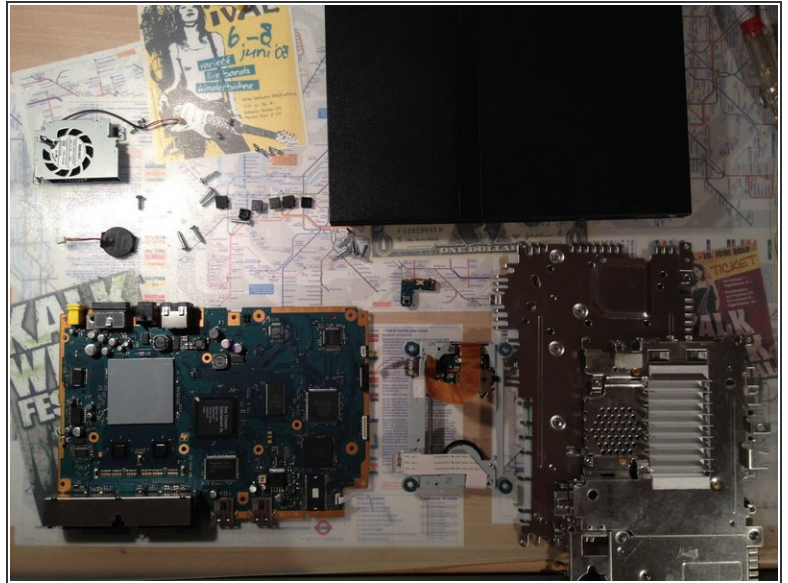
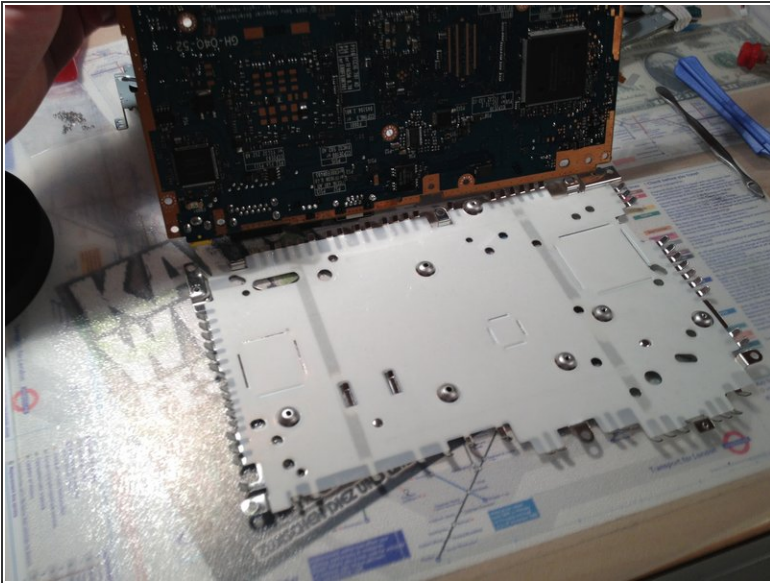
  - Remove the three PH00 screws from the fan's cover.
  - Then peel the duct tape back and remove the cable.

## Step 6



- Remove the four screws marked on the picture. These are located on the bottom side of the motherboard.
- Then flip the motherboard back over and remove the two rating screws on the upside.
- i** Now both metal plates should be ready to remove.

## Step 7



- Remove the metal plate from the bottom side of the motherboard.
- ⓘ Now everything should be disconnected and you successfully torn your PlayStation 2 Slimline down.
- ⓘ To reassemble, follow these steps in reverse.

To reassemble your device, follow these instructions in reverse order.