



PlayStation 2 Top Cover Replacement

Written By: jwyong



INTRODUCTION

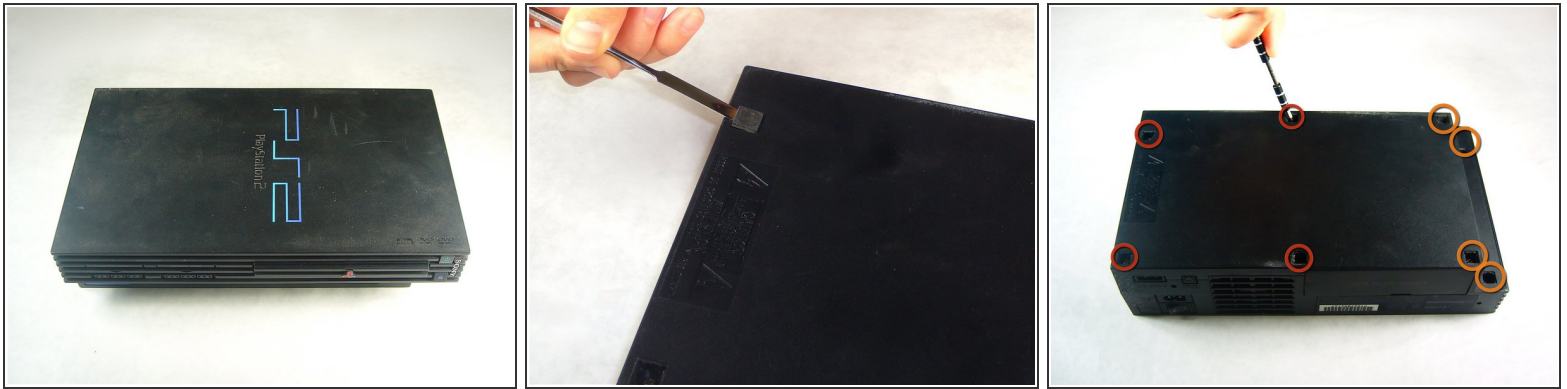
Replace your PlayStation 2's scratched-up or worn out top cover.



TOOLS:

- [Metal Spudger](#) (1)
 - [Phillips #00 Screwdriver](#) (1)
 - [Phillips #1 Screwdriver](#) (1)
-

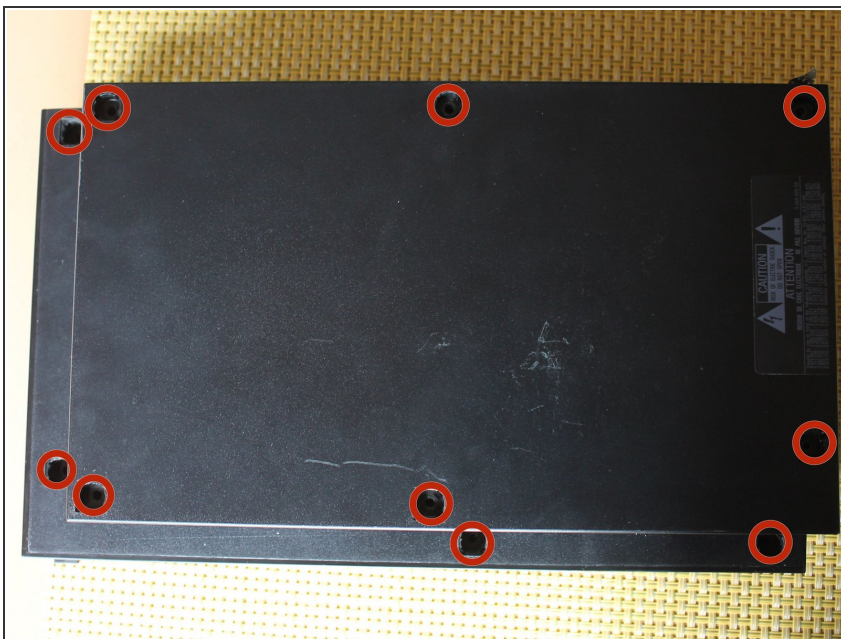
Step 1 — Top Cover



✦ Flip the PlayStation 2 over so it lays with the bottom of the device facing upwards.

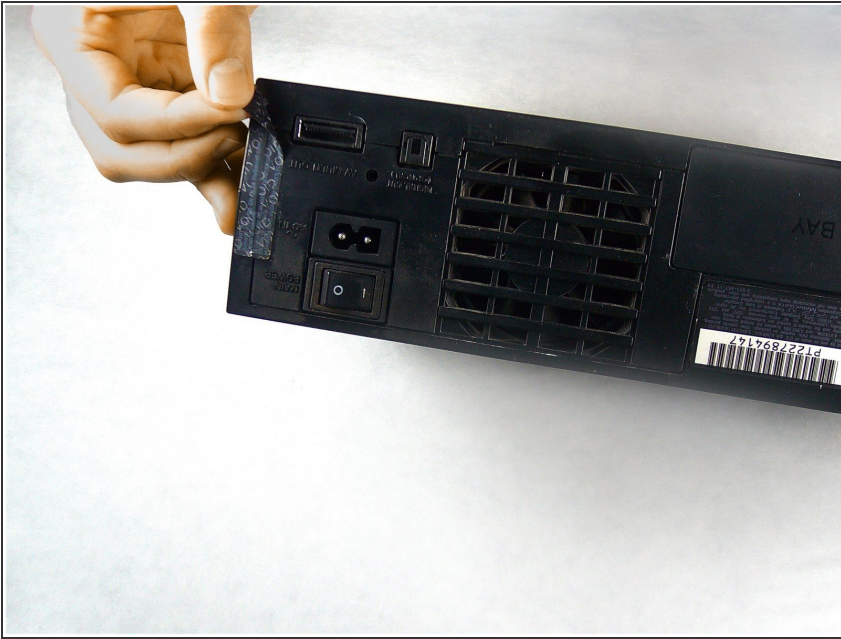
- Use the flat edge of a metal spudger to pry the eight flat screw covers out.
- Remove the following eight screws securing the top cover to the bottom case:
 - Four 55.4 mm Philips screws
 - Four 18.0 mm Phillips screws

Step 2



- Some models have a different number of screws and feet. Remove all the feet and screws in the bottom of the case.
- The 10 screw model has 6 screws in the bottom-most portion and 4 in the upper tray.

Step 3



- Peel the warranty sticker (located next to the main power switch) straight away from the case.
- ⓘ To avoid activating the VOID that may come up, heat it carefully to remove and replace it clean

Step 4



- ✦ Flip the PlayStation 2 back to its original upside position.
- Lift the top cover off the bottom case.
- ⓘ To facilitate the removal, it is recommended to pry open the half closer to the power switch first while rocking the top cover towards the front of the bottom case.
- Carefully remove the power cord that attaches the top and bottom halves by disconnecting the power cord assembly from the bottom case.

To reassemble your device, follow these instructions in reverse order.