



PlayStation 3 AC Inlet Replacement

Replace your PS3's AC socket and On/Off switch.

Written By: Walter Galan



INTRODUCTION

Use this guide to replace your PlayStation 3's AC inlet.



TOOLS:

- [Phillips #1 Screwdriver](#) (1)
- [Spudger](#) (1)
- [T10 Torx Screwdriver](#) (1)



PARTS:

- [Sony PlayStation 3 AC Inlet](#) (1)

Step 1 — Smart Plate



- Use the tip of a spudger to remove the black rubber screw cover from the side of the PS3.
- ⓘ The screw cover may be underneath a warranty sticker. This sticker will change appearance, and show "VOID" after it has been removed.

Step 2



- Remove the single 8.5 mm T10 Security Torx screw from the smart plate.


Step 3



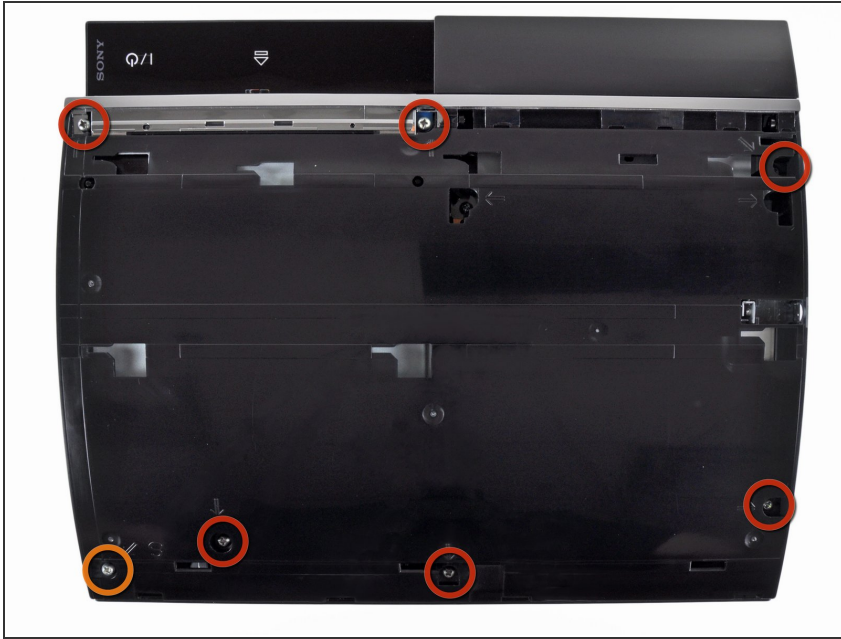
- Pull the smart plate toward the hard drive bay, then lift it off the body of the PS3.

Step 4



 Be sure to keep track of the small metal bracket loosely held in the top cover, if equipped.

Step 5 — Top Cover



- Remove the following seven screws:
 - Six 52 mm Phillips screws
 - One 30 mm Phillips screw

Step 6



- Lift the top cover from its rear edge and rotate it toward the front of the PS3.
- Remove the top cover.
- There is a plastic hook located in a hole on the top back right hand side corner. Carefully push the plastic hook a bit front the rear of the machine with a spudger to release the rear right of the casing.

Step 7 — Blu-ray Disc Drive



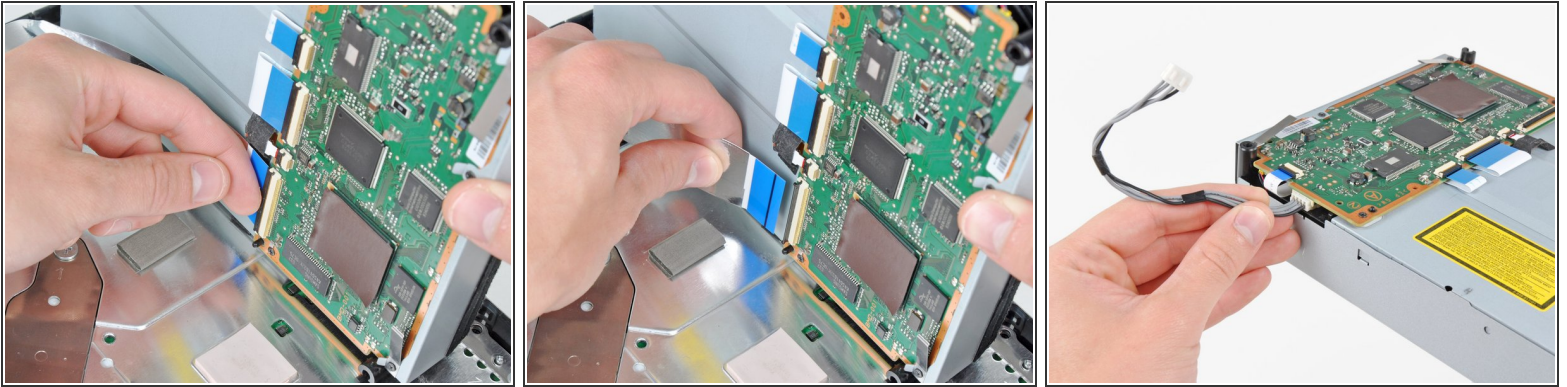
- Disconnect the Blu-ray power cable from the motherboard.
- ⓘ Pull the connector straight up and out of its socket.

Step 8





- Lift the Blu-ray drive from the edge nearest the power supply and rotate it away from the chassis enough to access its ribbon cable.

Step 9

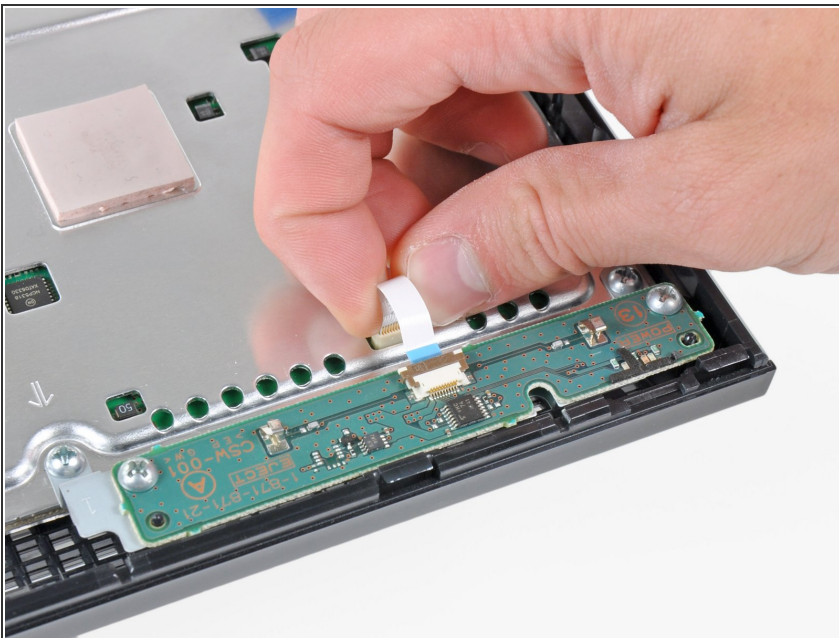


- Use your fingernail to flip up the retaining flap on the Blu-ray ribbon cable socket.

 Be sure you are prying up on the retaining flap, **not** the socket itself.

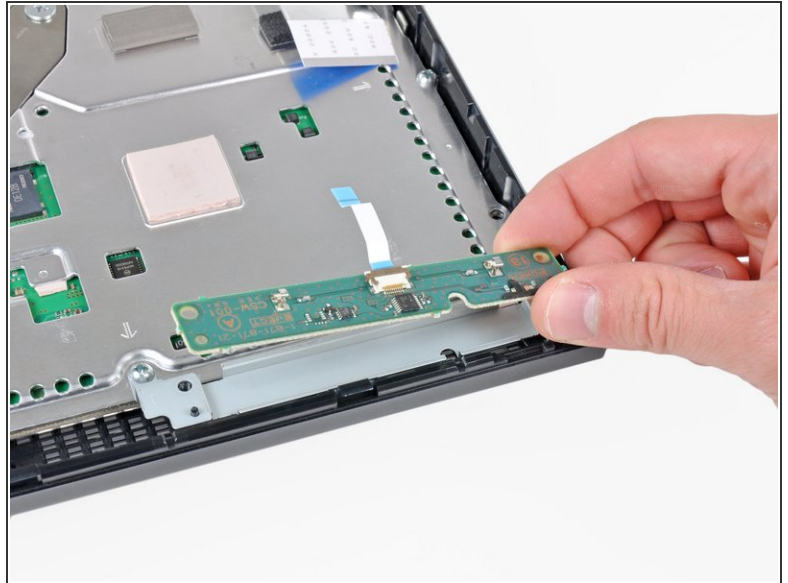
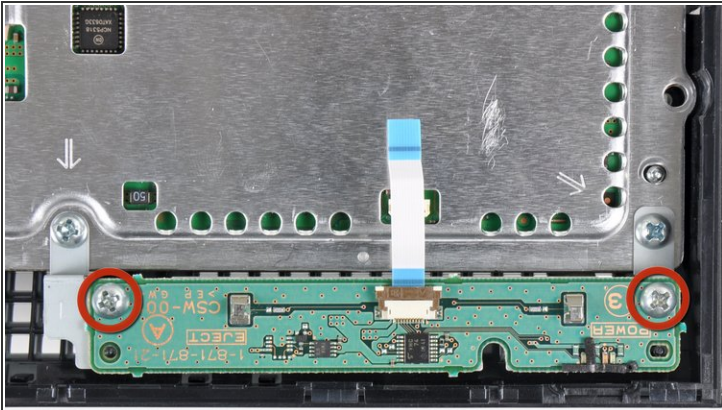
- Pull the ribbon cable out of its socket.
 - Remove the Blu-ray drive from the PS3.
-  If replacing the Blu-ray drive, transfer the power cable to your new drive.

Step 10 — Motherboard Assembly



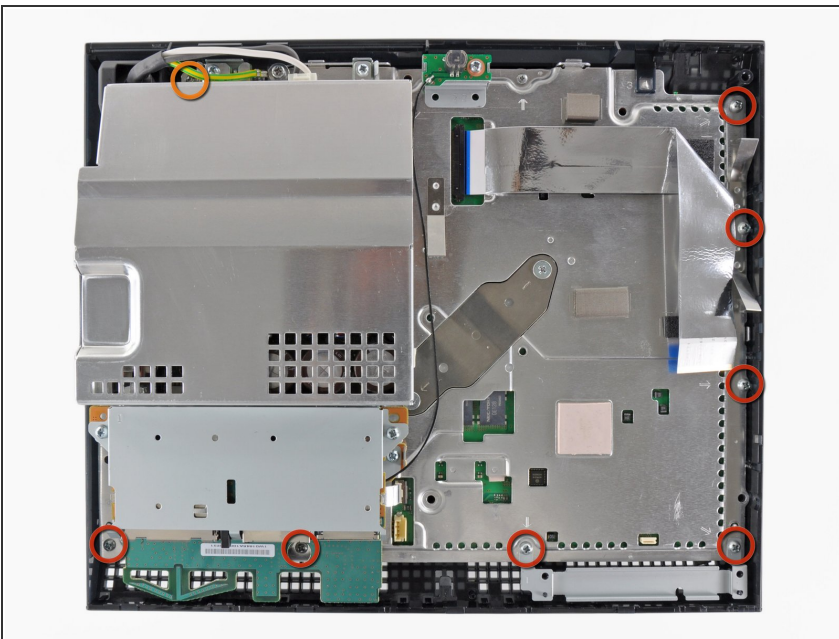
- Pull the control board ribbon cable straight up and out of its socket on the motherboard.

Step 11



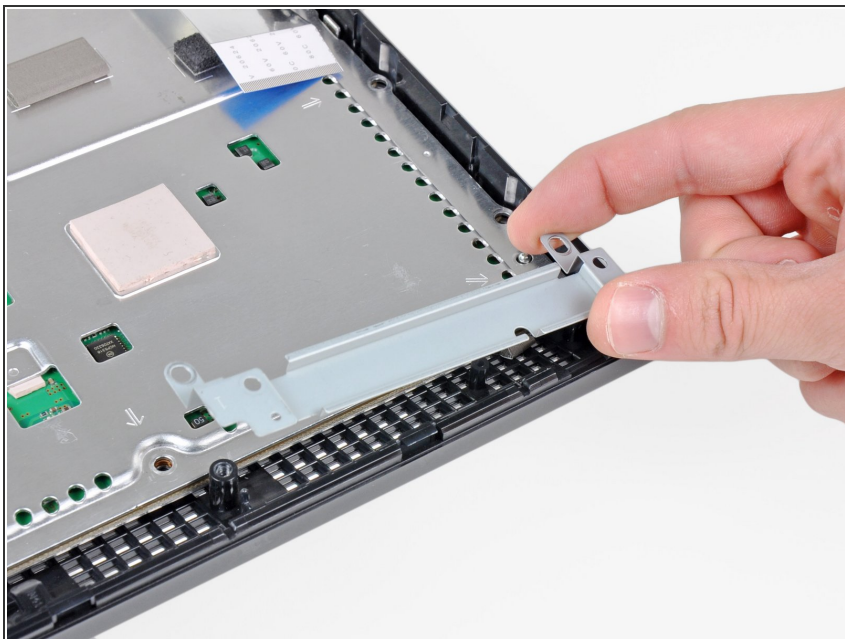
- Remove the two 12 mm Phillips screws securing the control board to the lower case.
- Remove the control board and its attached cable from the PS3.

Step 12



- Remove the following eight screws securing the motherboard assembly to the lower case:
 - Seven 12 mm Phillips screws (ph2)
 - One 30 mm Phillips screw

Step 13



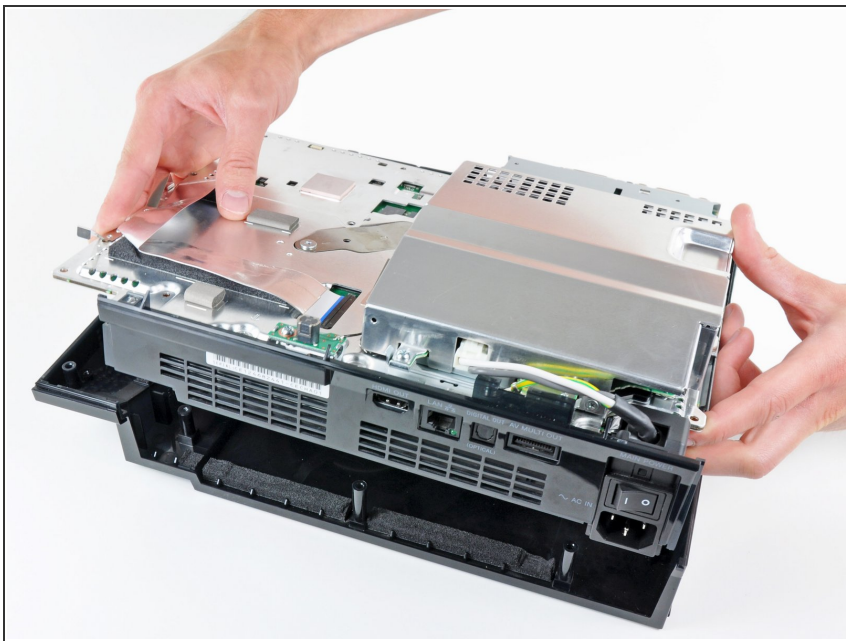
- Remove the control board bracket.

Step 14



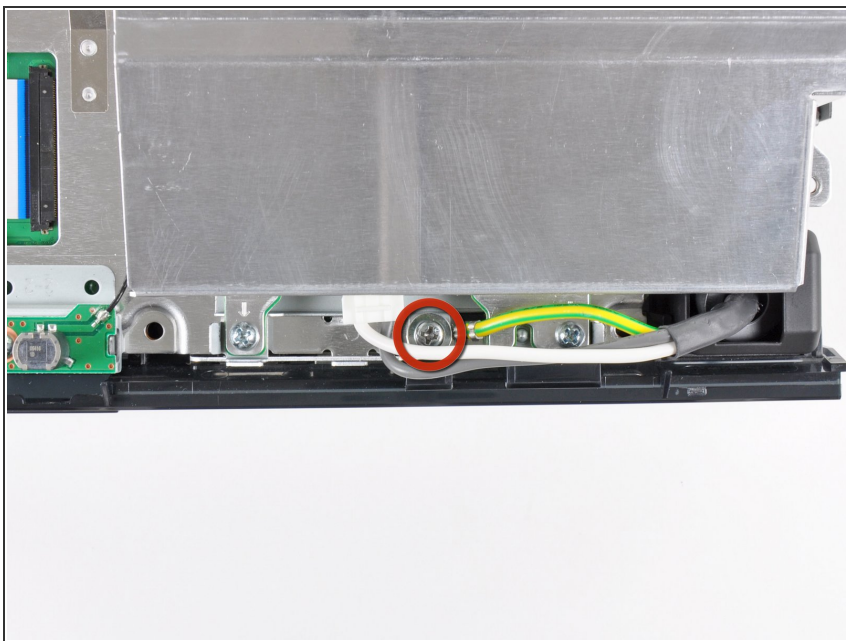
- Use the flat end of a spudger to pry the hard drive bay cover away from the lower case.
- Remove the hard drive bay cover.

Step 15



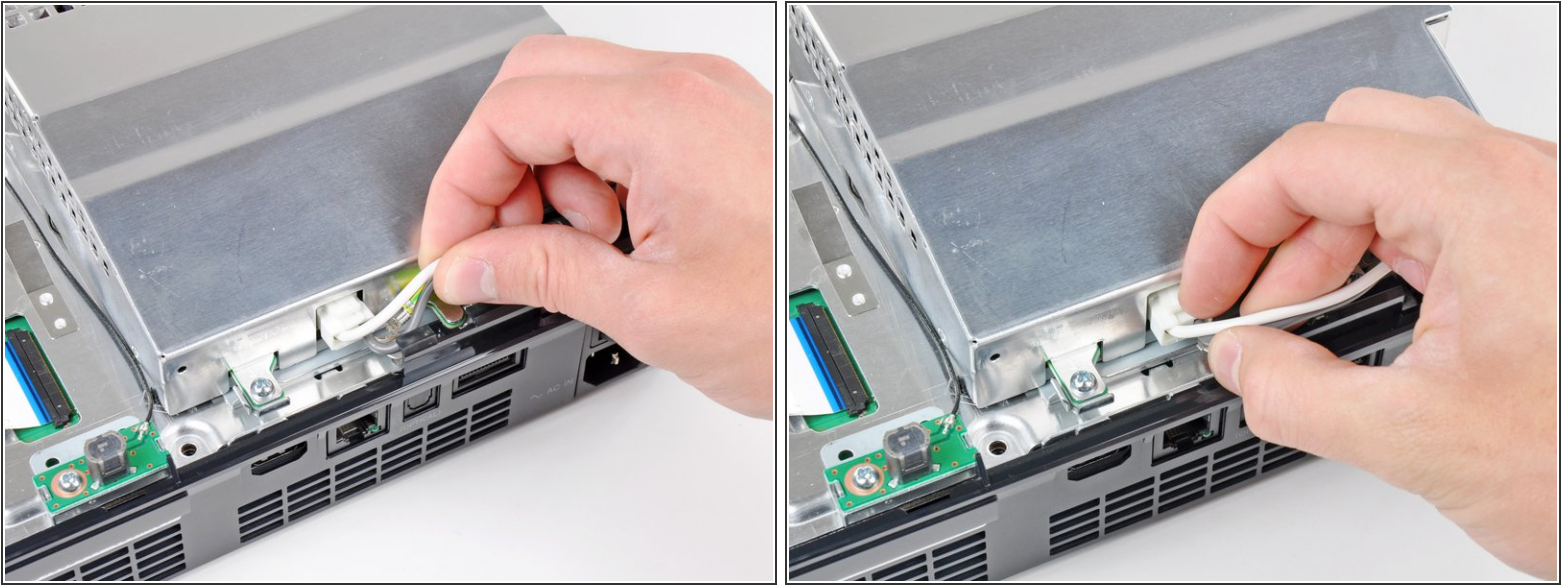
- Lift the motherboard assembly out of the lower case.

Step 16 — AC Inlet



- Remove the 7.7 mm Phillips screw securing the ground strap to the chassis.

Step 17



- Pull the AC-In cables slightly away from the rear cover for clearance to access the AC-In connector.
- While depressing its locking mechanism, pull the AC-In connector out of its socket on the power supply.

Step 18



- Pull the AC inlet out from the bottom of the rear cover, minding any of its cables that may get caught.

To reassemble your device, follow these instructions in reverse order.