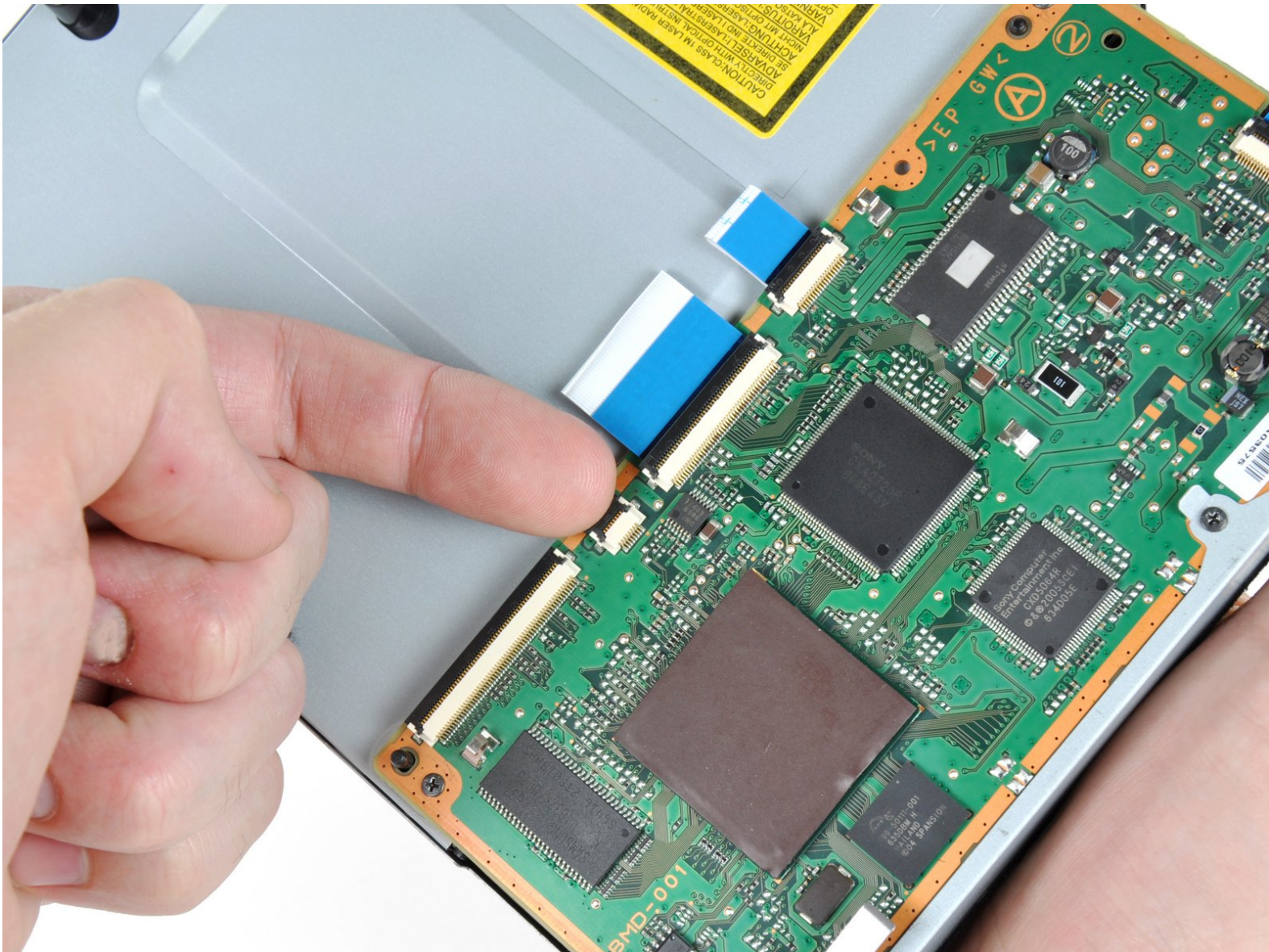




PlayStation 3 Blu-Ray Drive Replacement

Swapping Optical Drive

Written By: Brett Hartt



INTRODUCTION

Use this guide to replace a broken or faulty Blu-ray Drive in your PlayStation 3. This guide shows only how to replace the original style of Blu-ray drive, KEM-400.



TOOLS:

- [Spudger](#) (1)
- [Phillips #00 Screwdriver](#) (1)
- [TR8 Torx Security Screwdriver](#) (1)



PARTS:

- [Replacement KEM-400 Blue Ray Drive](#) (1)

Step 1 — Smart Plate



- Use the tip of a spudger to remove the black rubber screw cover from the side of the PS3.
- ⓘ The screw cover may be underneath a warranty sticker. This sticker will change appearance, and show "VOID" after it has been removed.

Step 2



- Remove the single 8.5 mm T10 Security Torx screw from the smart plate.


Step 3



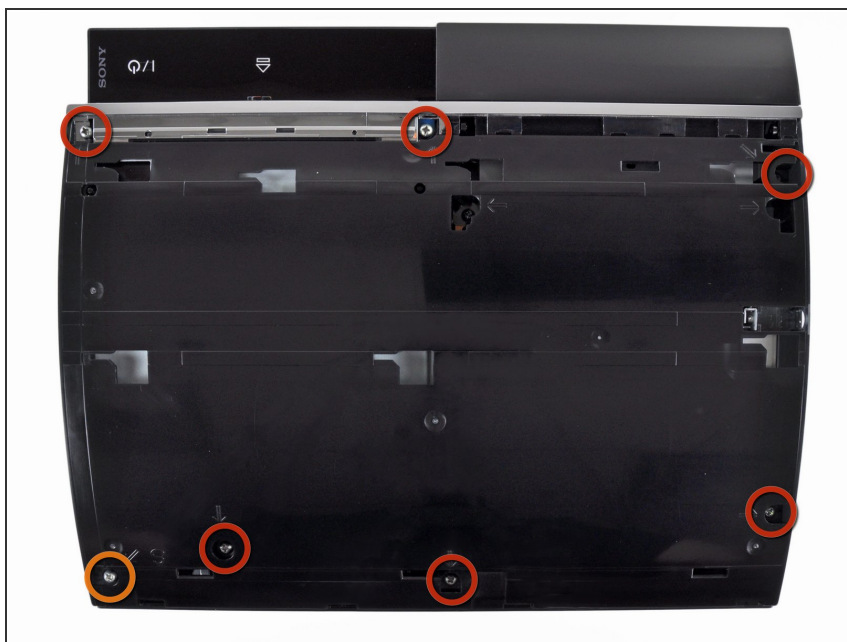
- Pull the smart plate toward the hard drive bay, then lift it off the body of the PS3.

Step 4



 Be sure to keep track of the small metal bracket loosely held in the top cover, if equipped.

Step 5 — Top Cover



- Remove the following seven screws:
 - Six 52 mm Phillips screws
 - One 30 mm Phillips screw

Step 6



- Lift the top cover from its rear edge and rotate it toward the front of the PS3.
- Remove the top cover.
- There is a plastic hook located in a hole on the top back right hand side corner. Carefully push the plastic hook a bit front the rear of the machine with a spudger to release the rear right of the casing.

Step 7 — Blu-ray Disc Drive



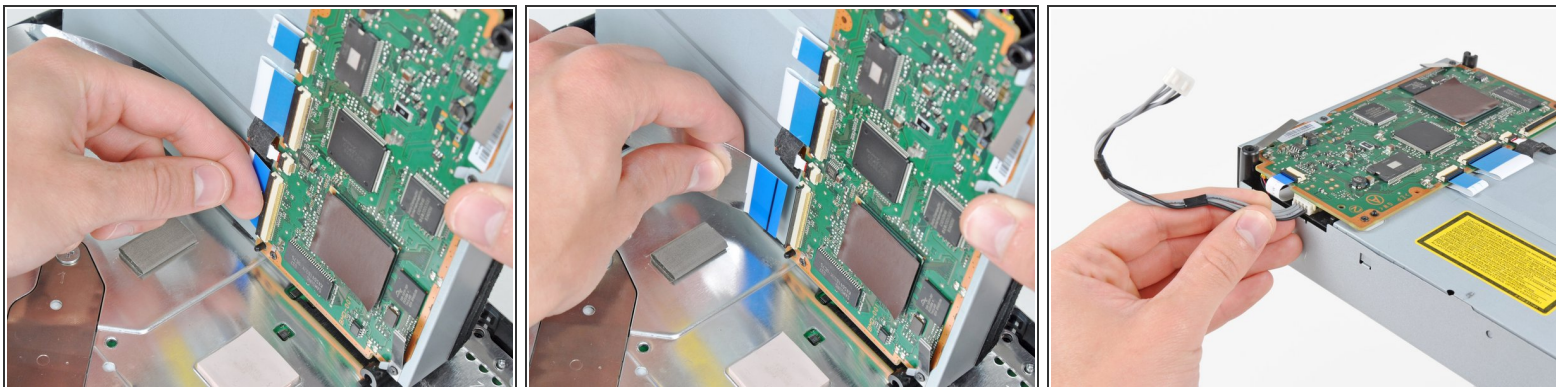
- Disconnect the Blu-ray power cable from the motherboard.
- ⓘ Pull the connector straight up and out of its socket.

Step 8




- Lift the Blu-ray drive from the edge nearest the power supply and rotate it away from the chassis enough to access its ribbon cable.


Step 9



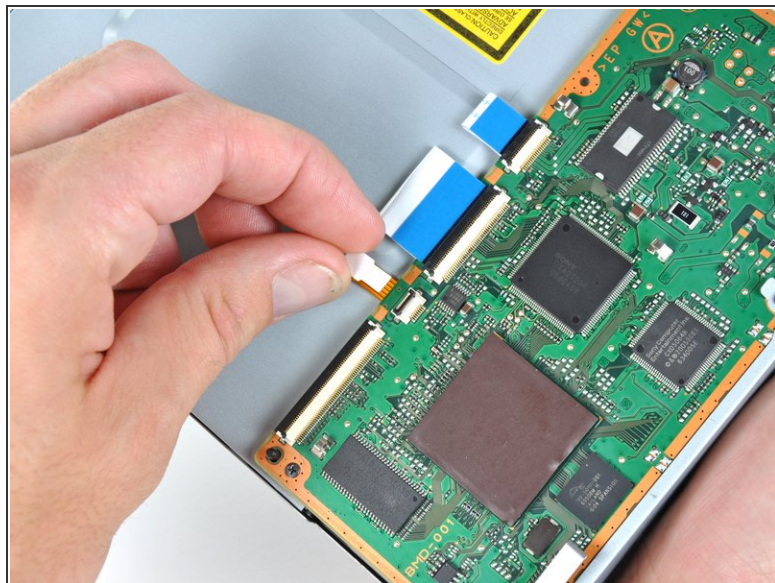
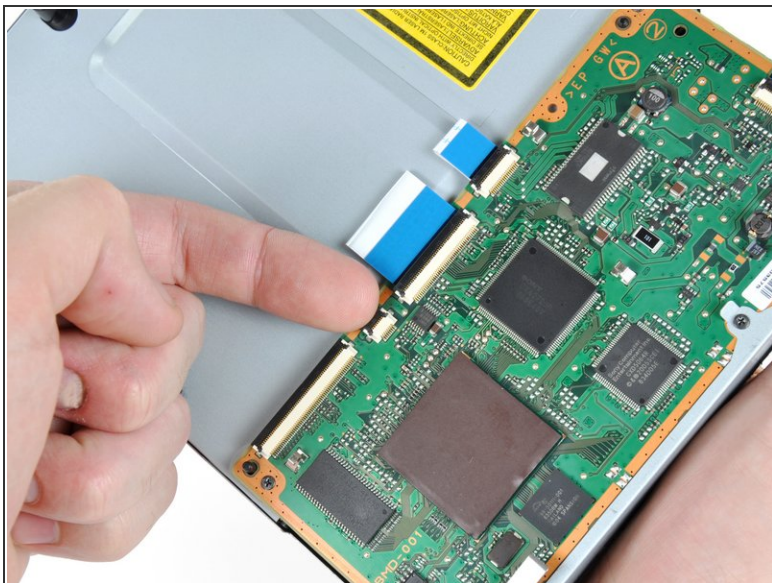
- Use your fingernail to flip up the retaining flap on the Blu-ray ribbon cable socket.

 Be sure you are prying up on the retaining flap, **not** the socket itself.

- Pull the ribbon cable out of its socket.
- Remove the Blu-ray drive from the PS3.

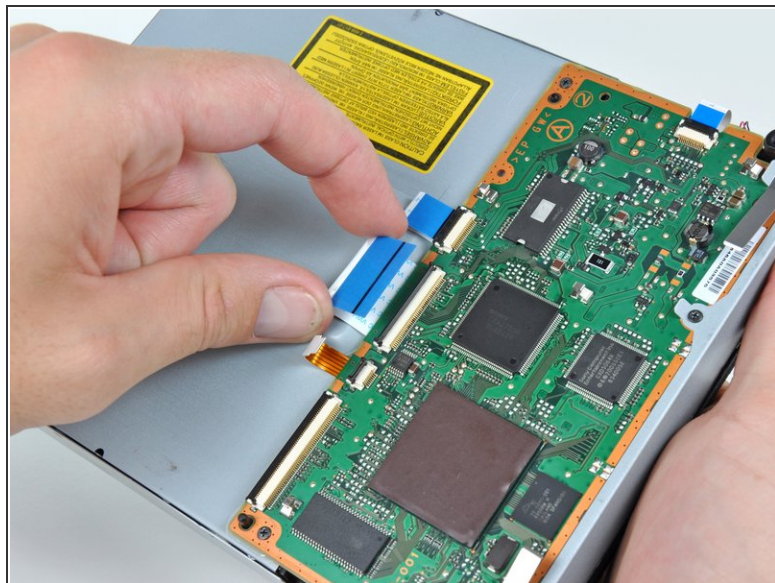
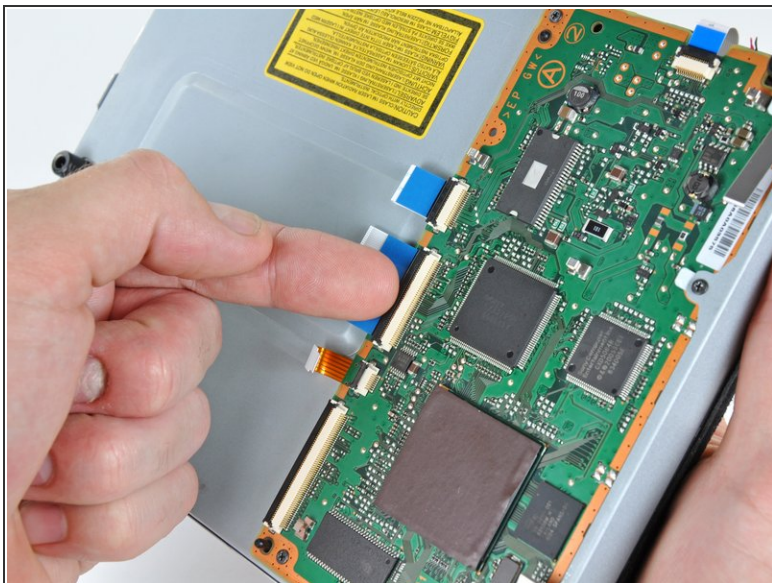
 If replacing the Blu-ray drive, transfer the power cable to your new drive.

Step 10 — Blu-Ray Drive



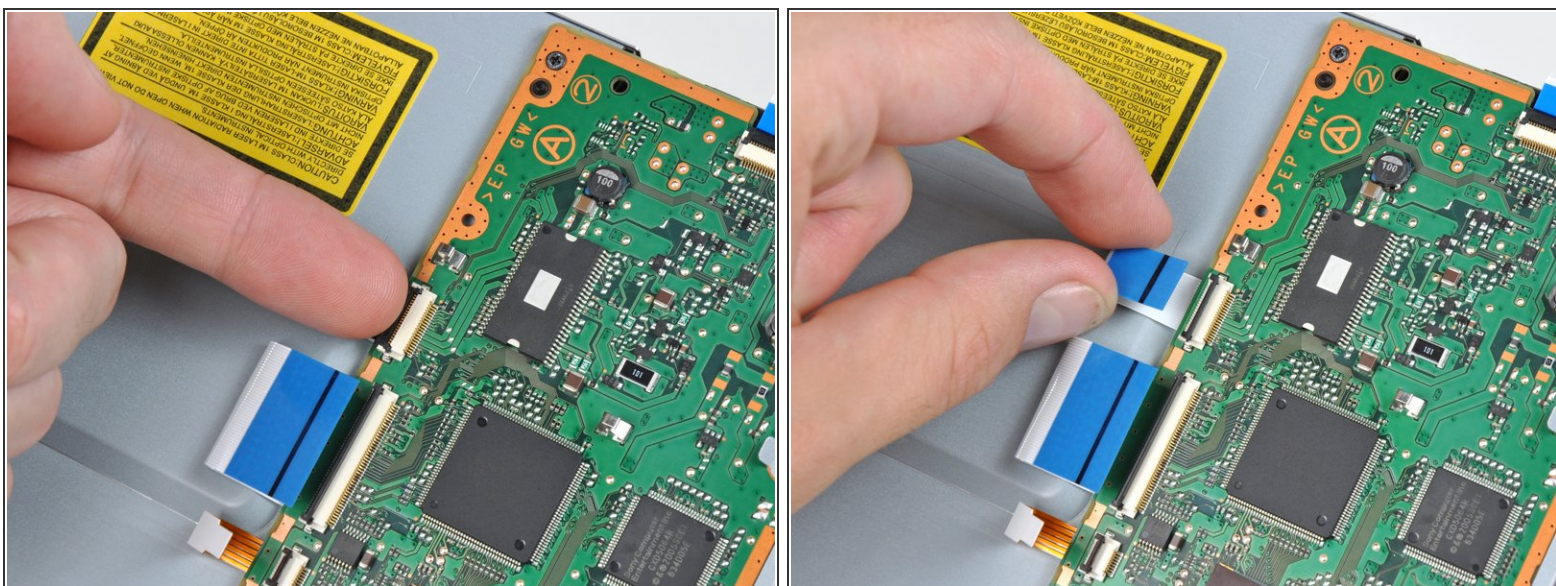
- Using your fingernail, lift the flap on the ZIF connector holding the Blu-ray lens motor cable to the Blu-ray control daughterboard.
- Pull the ribbon cable straight away from its socket on the daughterboard.

Step 11



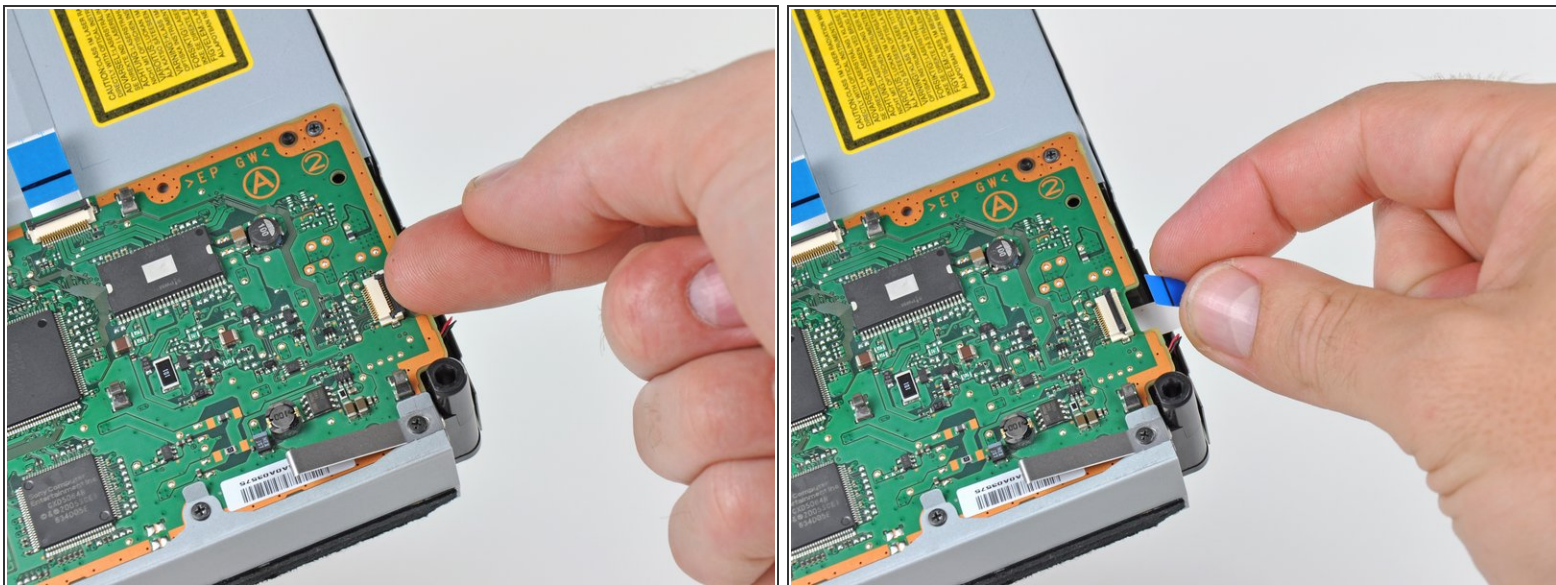
- Using your fingernail, lift the flap on the ZIF connector holding the Blu-ray lens Data cable to the Blu-ray control daughterboard.
- Pull the ribbon cable straight away from its socket on the daughterboard.

Step 12



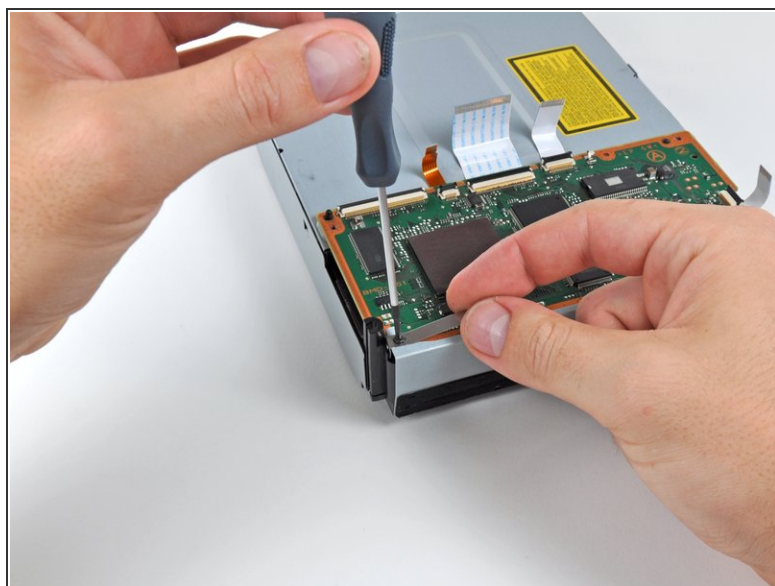
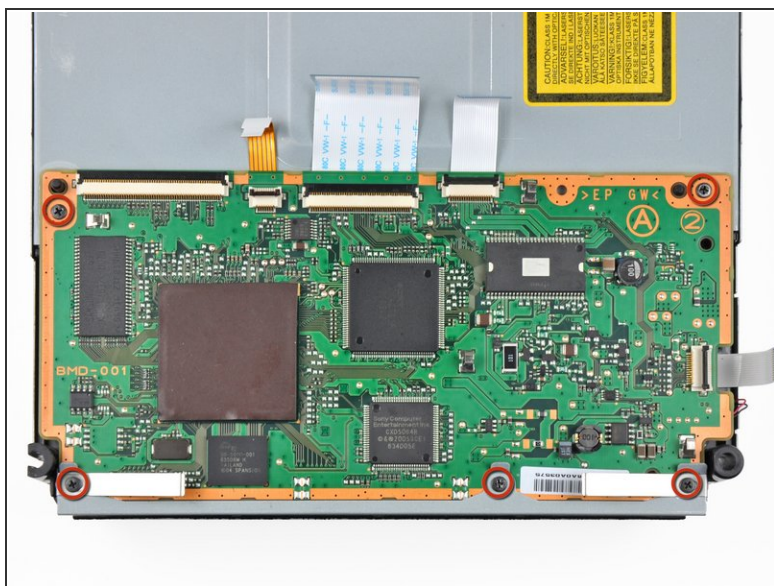
- Using your fingernail, lift the flap on the ZIF connector holding the Blu-ray drive motor cable to the Blu-ray control daughterboard.
- Pull the ribbon cable straight away from its socket on the daughterboard.

Step 13



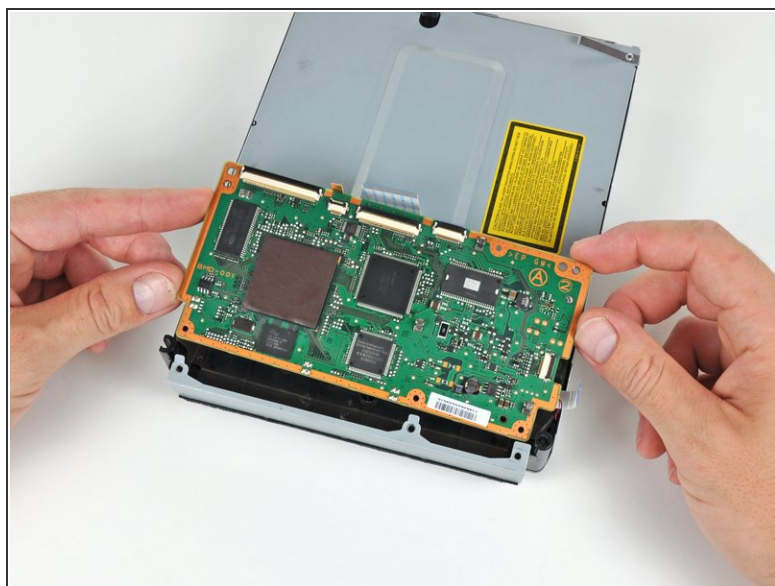
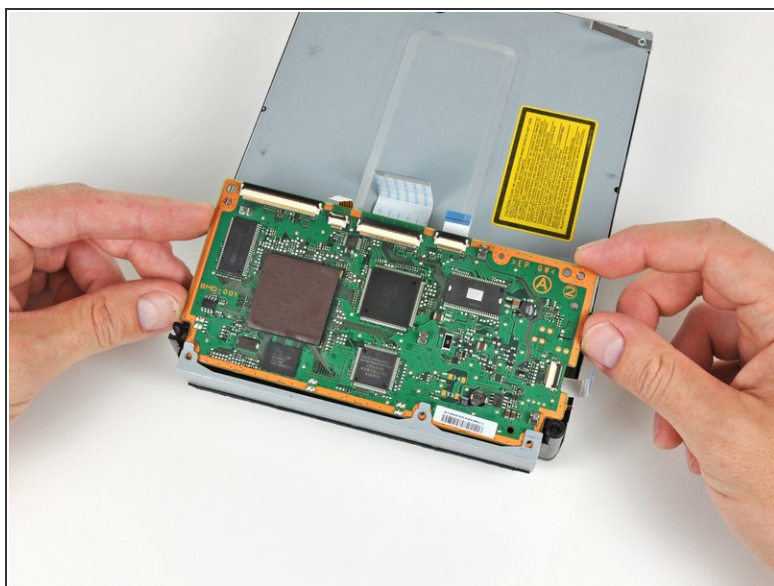
- Using your fingernail, lift the flap on the ZIF connector holding the Blu-ray IR sensor cable to the Blu-ray control daughterboard.
- Pull the ribbon cable straight away from its socket on the daughterboard.

Step 14




- Remove the five 8.4mm phillips screws securing the Blu-ray control board to the Blu-ray drive.
- ⓘ Be sure to also remove the metal ground springs from under the screws in the corners.

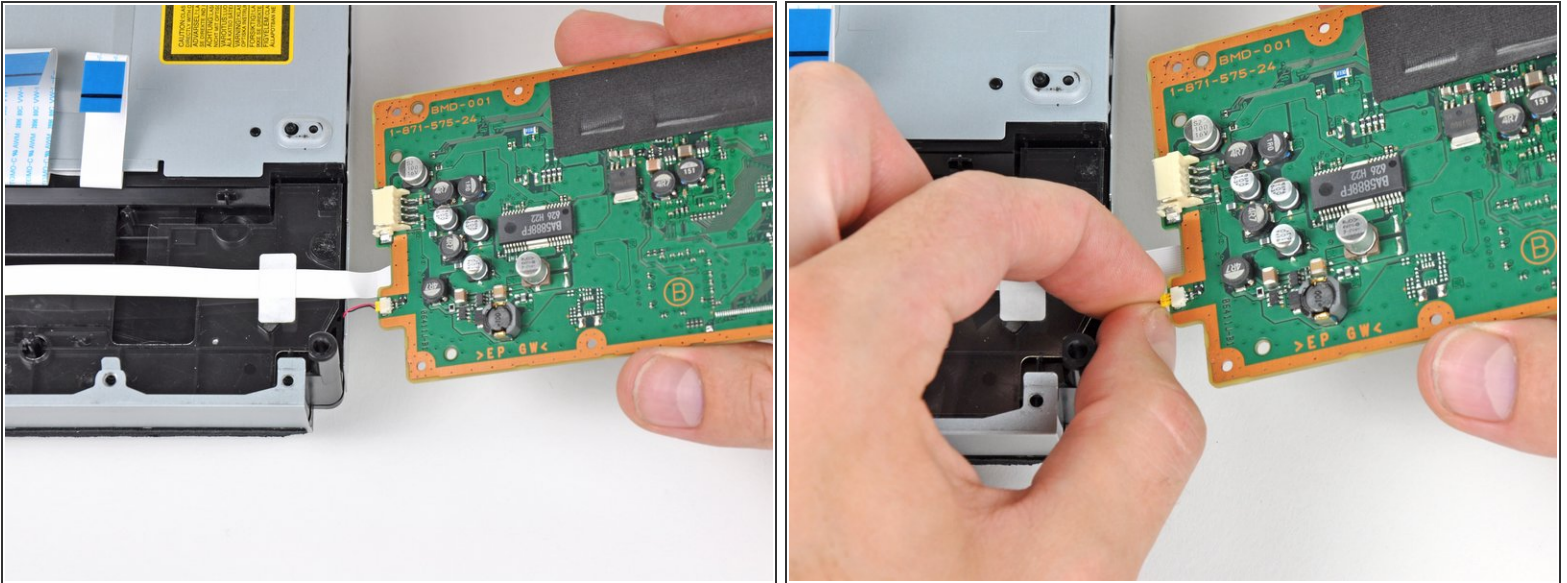
Step 15



- Carefully lift the daughterboard from the rear edge.
- Slide the daughterboard out from under the top case.

 Do not try to remove the daughterboard yet, as it is still connected by a cable on the underside of the board.

Step 16



- Carefully turn the daughterboard over, making sure to not tear the attached cable.
 - Pull the IR Sensor cable straight away from its socket on the board.
- ⚠ Be sure that you are not pulling on the cables as you remove the plug from its socket.
- Blu-Ray drive remains.
- ⓘ If you are replacing the Blu-ray drive, you must use the same daughterboard that came with your PlayStation 3. The daughterboard is paired to the motherboard, and the Blu-ray drive will not work with a different board.

To reassemble your device, follow these instructions in reverse order.