



PlayStation 3 CECHH01 Teardown

Was having heat issues and decided to clean it out. Here's the steps taken.

Written By: knyrii



INTRODUCTION

Was having heat issues and decided to clean it out. Here's the steps taken.



TOOLS:

- [T8 Torx Security Bit Screwdriver](#) (1)
 - [Phillips #1 Screwdriver](#) (1)
 - [Phillips #2 Screwdriver](#) (1)
-

Step 1 — Remove HDD



- Using fingernail, or spudger, remove the cover.
- Remove PH1 screw
- Pull HDD out.

Step 2 — Remove security screw



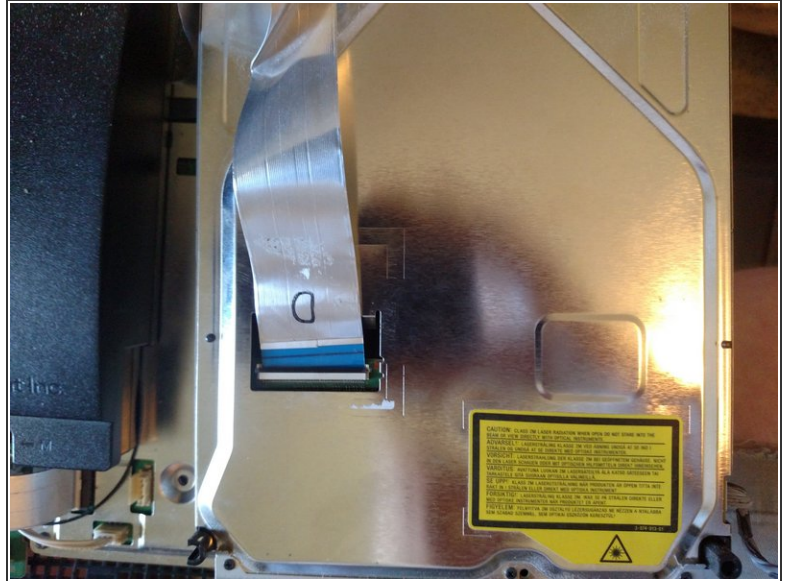
- Remove sticker and underlying rubber tab
- Remove the T9 security screw
- Pull cover towards you to remove

Step 3



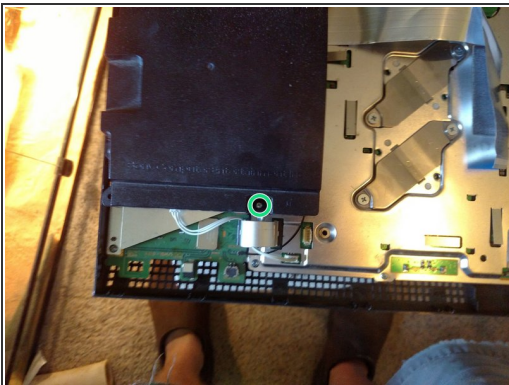
- Remove the 6 long medium screws
- Remove the medium medium screw. This screw is conveniently marked with an S if you forget what goes where.
- ⚠ The blueray drive is NOT screwed down. Do not tip the console!
- Use a finger to press the tab next to the medium length screw and lift. The case pivots on the front.
- When putting back together, place the front edge and rotate back. The screws will pop everything back in place.

Step 4 — Remove Blu-ray drive



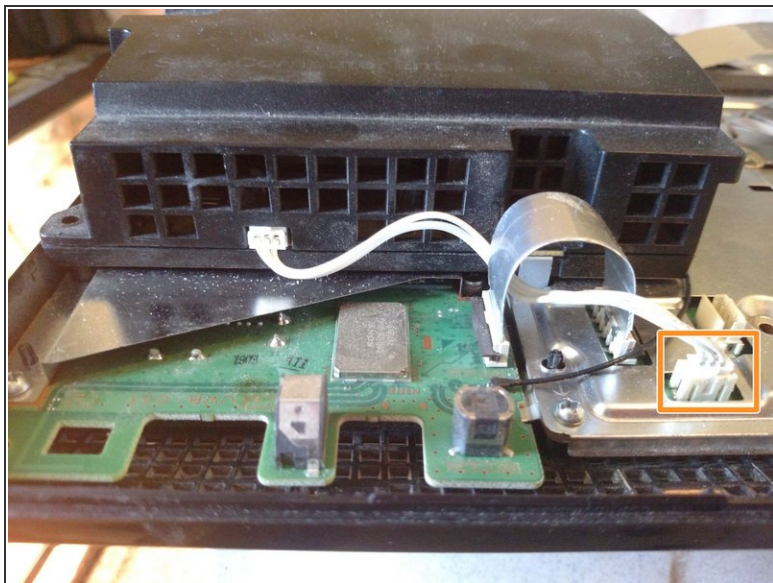
- Flip blu-ray drive over and lift the tab to remove the cable

Step 5 — Remove power supply screws



- Remove M screw
 - Remove medium medium screws
 - Remove long M screws
- i** When putting back together, the fine thread screws are marked with M.

Step 6 — Unhook power supply



- Push down on tab and pull straight out
- Pull straight out

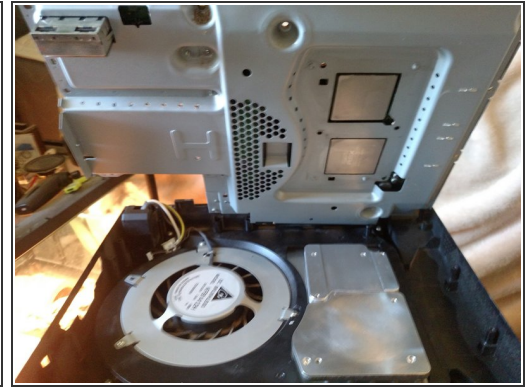
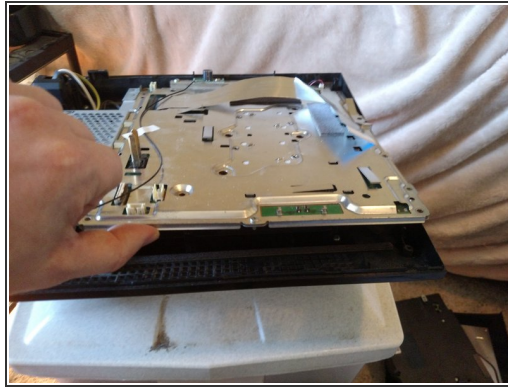
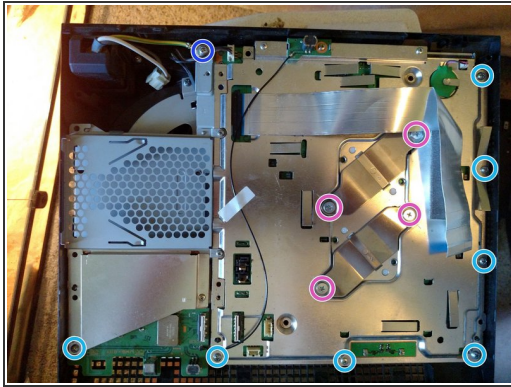
Step 7 — Remove power supply




⚠ Do not use a metal spudger! There are exposed prongs that may short and shock you. I did not know this when I did it.



- Using something non-conductive, lift this corner up to make removal easier.
- Pull straight up to remove the power supply.

Step 8 — Unscrew the board brace

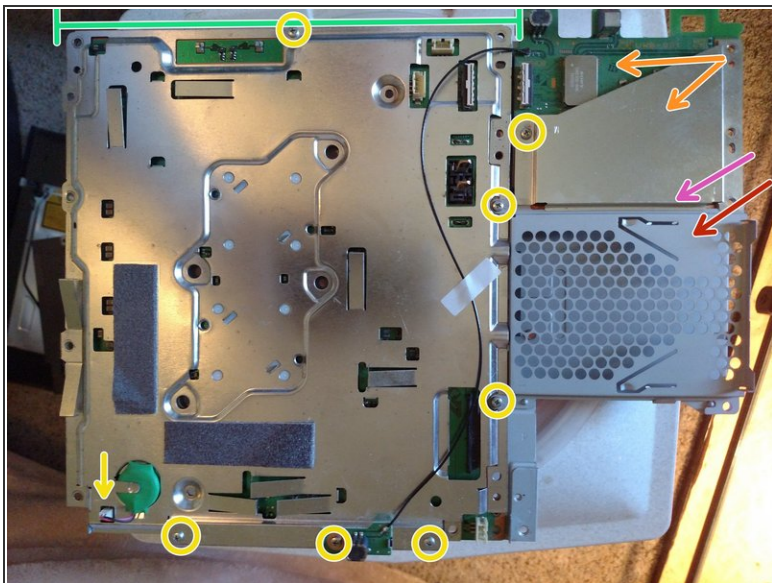


- Remove the short medium screws
- Remove the ground screw
- Remove the heatsink screws and braces
- Lift the front to remove

 Do this slowly. The heatsinks are not screwed down and you may damage the fins if you use too much force.

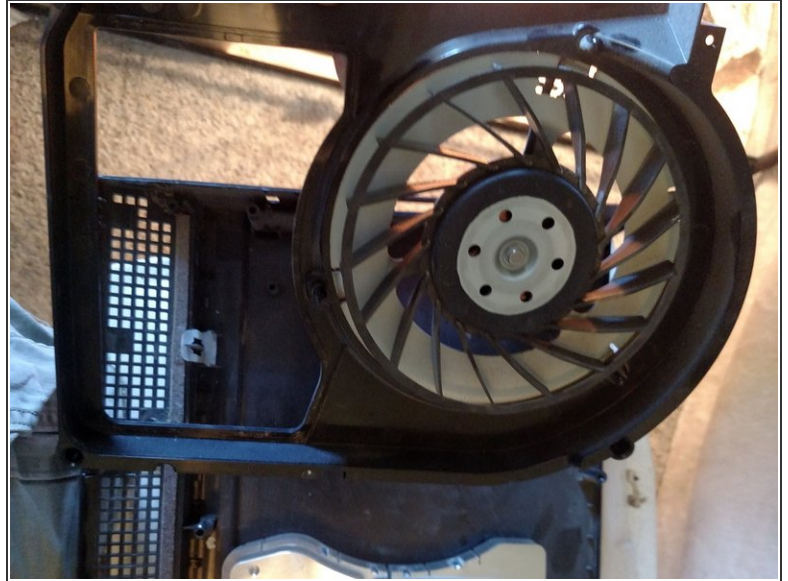
-  This is the second time I've taken this apart. That's why there is no thermal paste on the chips. They do put paste on there. Too much in my opinion.
-  When putting back together, all the screw places are marked. If the hole doesn't have a marker, don't put a screw in it.

Step 9 — Remove the shields



- Unscrew the M screws and unplug the board battery. Your PS3 now does not know the date and time.
- I messed up when I put it back together. The shield goes under the top half of the HDD cage.
- Lift this side of the HDD cage and wiggle it. The pins can be tricky.
- Remove the shield over the USB and WiFi controller
- Remove the USB and WiFi controller. It lifts straight up. Remove the white tape.
- Lift from this side to remove the motherboard shield.
- The motherboard lifts right out

Step 10



- Ok, I forgot to take a picture before unscrewing the bottom. There are 4 small medium screws.
- The back plate lifts up
- The fan and cover lifts straight up
- The heatsinks are not screwed down and lift right out

Step 11 — Done



- Insert wisdom here.