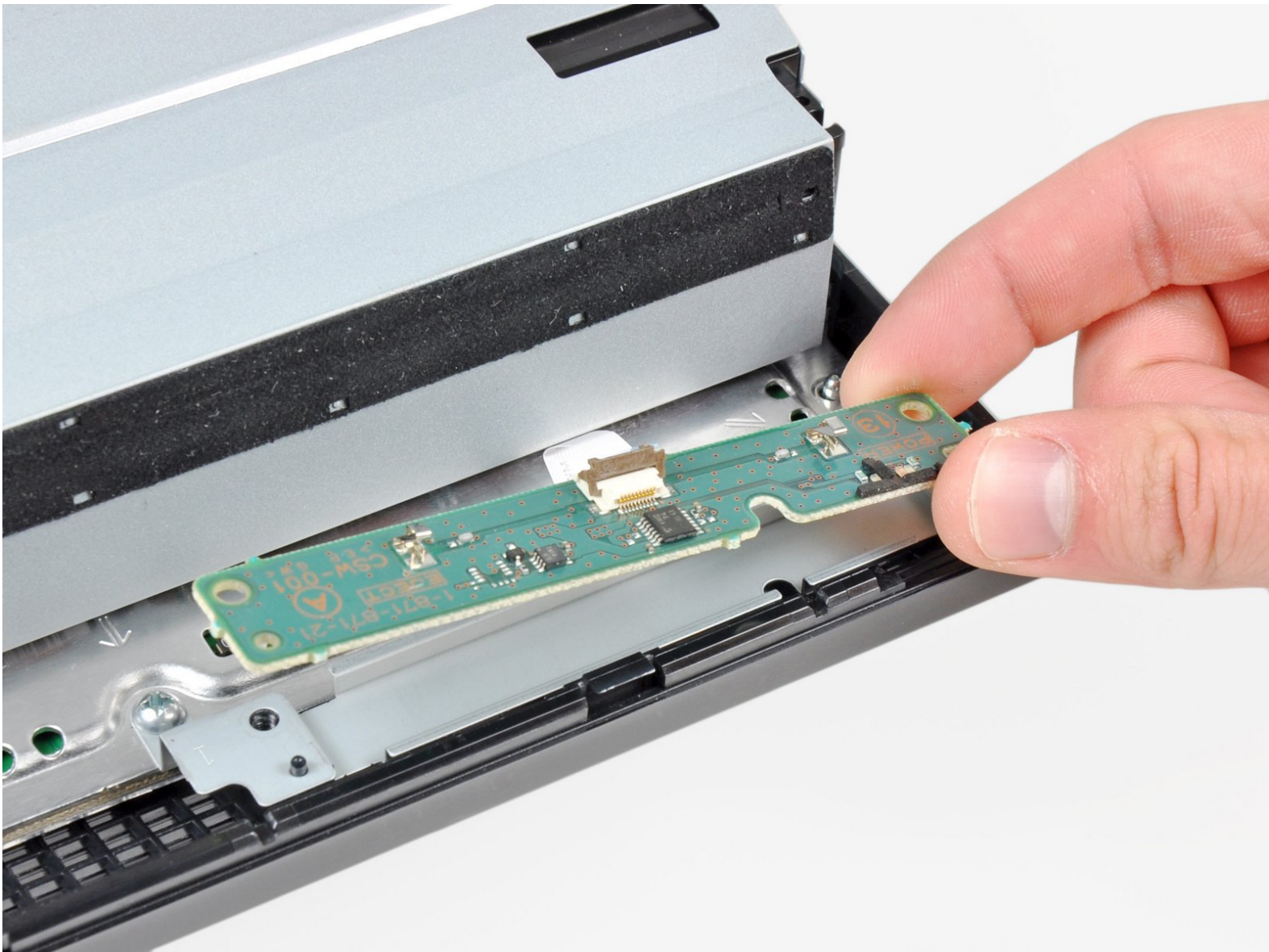




# PlayStation 3 Control Board Replacement

Replace the electronic portion of your PS3's eject and I/O buttons.

Written By: Walter Galan



# INTRODUCTION

Use this guide to replace a broken control board.



## TOOLS:

- [Phillips #1 Screwdriver](#) (1)
- [Spudger](#) (1)
- [T10 Torx Screwdriver](#) (1)



## PARTS:

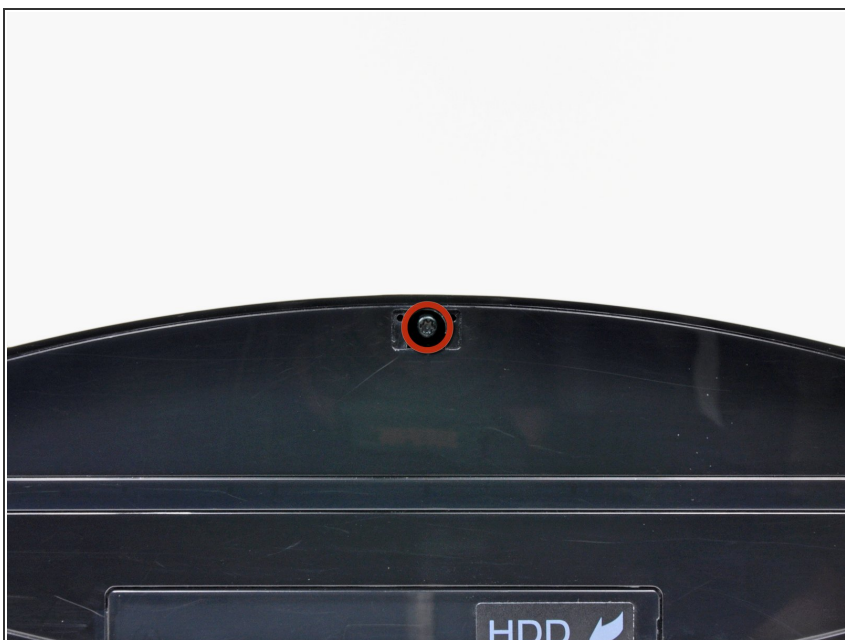
- [Sony PlayStation 3 Models A, B, C, and E Control Board](#) (1)
- [Sony PlayStation 3 Models A, B, C, and E Control Board Data Cable](#) (1)

## Step 1 — Smart Plate



- Use the tip of a spudger to remove the black rubber screw cover from the side of the PS3.
- ⓘ The screw cover may be underneath a warranty sticker. This sticker will change appearance, and show "VOID" after it has been removed.

## Step 2



- Remove the single 8.5 mm T10 Security Torx screw from the smart plate.



## Step 3



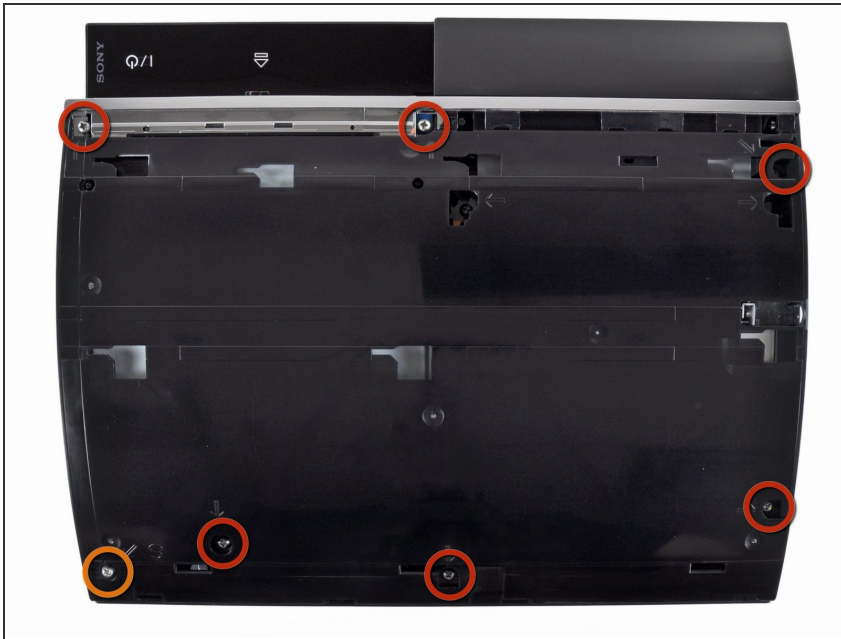
- Pull the smart plate toward the hard drive bay, then lift it off the body of the PS3.

## Step 4



⚠ Be sure to keep track of the small metal bracket loosely held in the top cover, if equipped.

## Step 5 — Top Cover



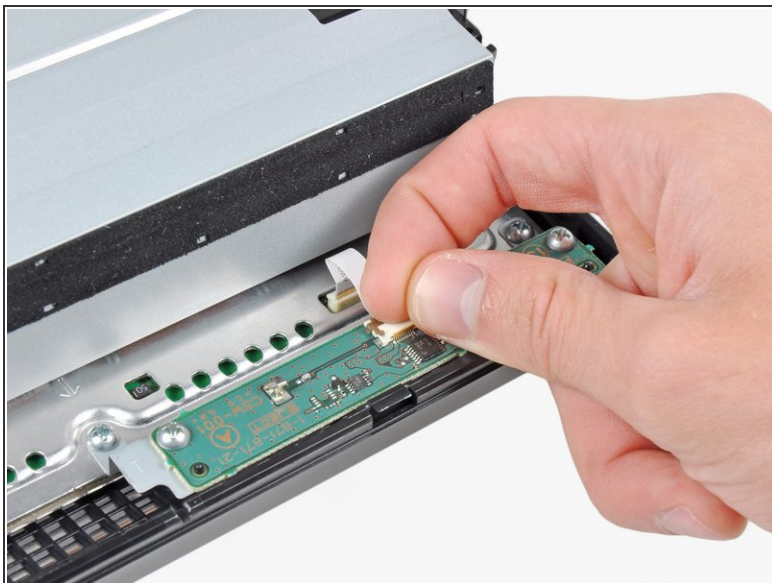
- Remove the following seven screws:
  - Six 52 mm Phillips screws
  - One 30 mm Phillips screw

## Step 6



- Lift the top cover from its rear edge and rotate it toward the front of the PS3.
- Remove the top cover.
- There is a plastic hook located in a hole on the top back right hand side corner. Carefully push the plastic hook a bit front the rear of the machine with a spudger to release the rear right of the casing.

## Step 7 — Control Board

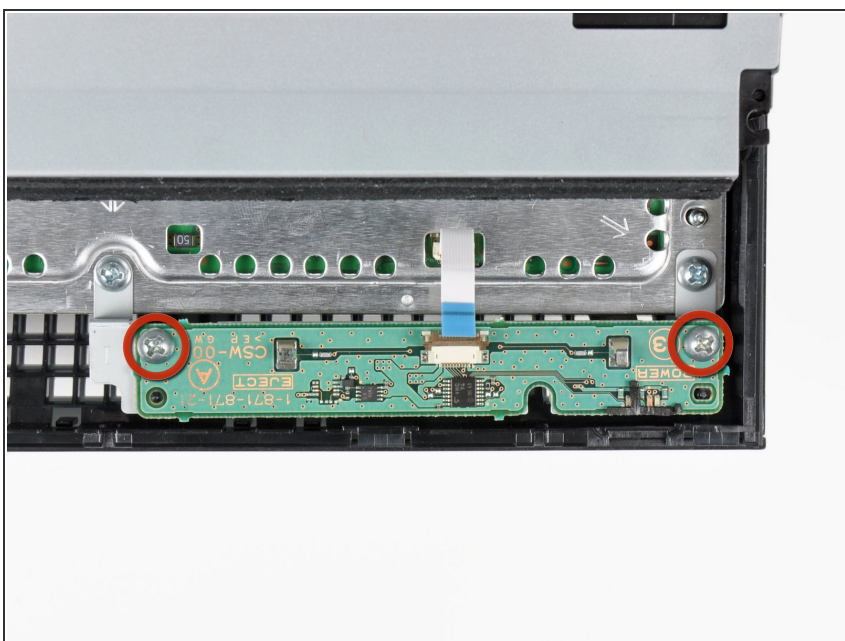


- Use your fingernail to flip up the retaining flap on the control board ribbon cable socket.

⚠ Be sure you are prying up on the retaining flap, **not** the socket itself.

- Pull the control board ribbon cable out of its socket.

## Step 8



- Remove the two 12 mm Phillips screws securing the control board to the lower case.



## Step 9



- Remove the control board from the lower case.

To reassemble your device, follow these instructions in reverse order.