



PlayStation 3 Memory Card Reader Replacement

Replace the PS3's memory card reader board.

Written By: Walter Galan



INTRODUCTION

Use this guide to replace your PlayStation 3's memory card reader board.



TOOLS:

- [Phillips #1 Screwdriver](#) (1)
- [Spudger](#) (1)
- [T10 Torx Screwdriver](#) (1)



PARTS:

- [Sony PlayStation 3 Models A, C, and E Memory Board](#) (1)
- [Sony PlayStation 3 Models A, C, and E Memory Board Data Cable](#) (1)

Step 1 — Smart Plate



- Use the tip of a spudger to remove the black rubber screw cover from the side of the PS3.
- ⓘ The screw cover may be underneath a warranty sticker. This sticker will change appearance, and show "VOID" after it has been removed.

Step 2



- Remove the single 8.5 mm T10 Security Torx screw from the smart plate.


Step 3



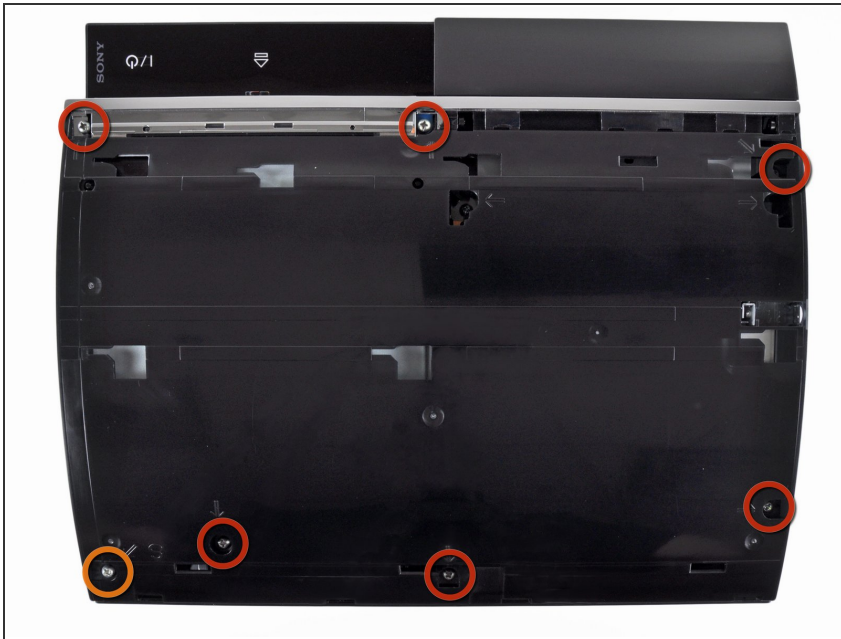
- Pull the smart plate toward the hard drive bay, then lift it off the body of the PS3.

Step 4



 Be sure to keep track of the small metal bracket loosely held in the top cover, if equipped.

Step 5 — Top Cover



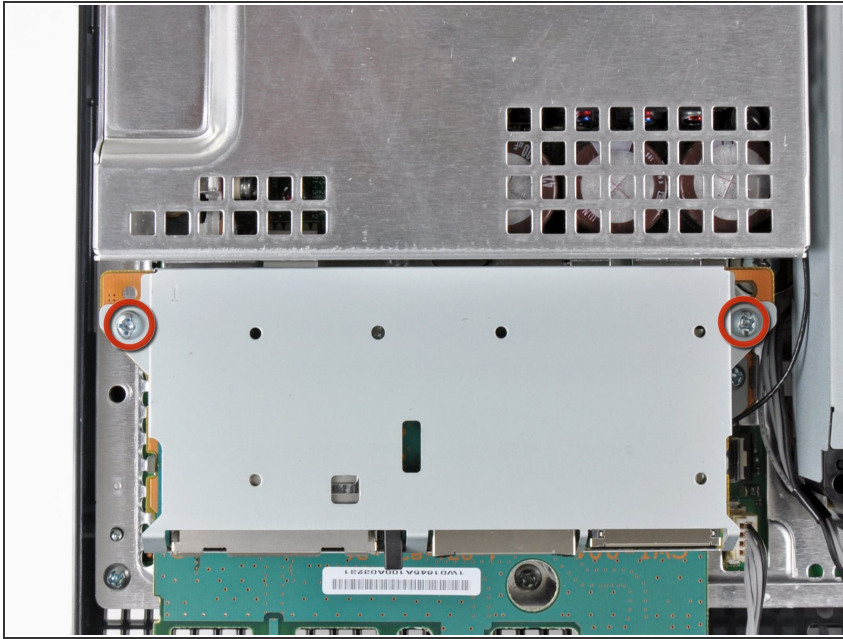
- Remove the following seven screws:
 - Six 52 mm Phillips screws
 - One 30 mm Phillips screw

Step 6



- Lift the top cover from its rear edge and rotate it toward the front of the PS3.
- Remove the top cover.
- There is a plastic hook located in a hole on the top back right hand side corner. Carefully push the plastic hook a bit front the rear of the machine with a spudger to release the rear right of the casing.

Step 7 — Memory Card Reader



- Remove the two 9 mm Phillips screws securing the memory card reader to the chassis.

Step 8



- Lift the memory card reader out of the PS3 enough to access its cable.
 - Flip up the retaining flap on the memory card reader ribbon cable socket.
- ⚠ Be sure you are prying up on the retaining flap, **not** the socket itself.
- Pull the ribbon cable out of its socket.
 - Remove the memory card reader from the PS3.

To reassemble your device, follow these instructions in reverse order.