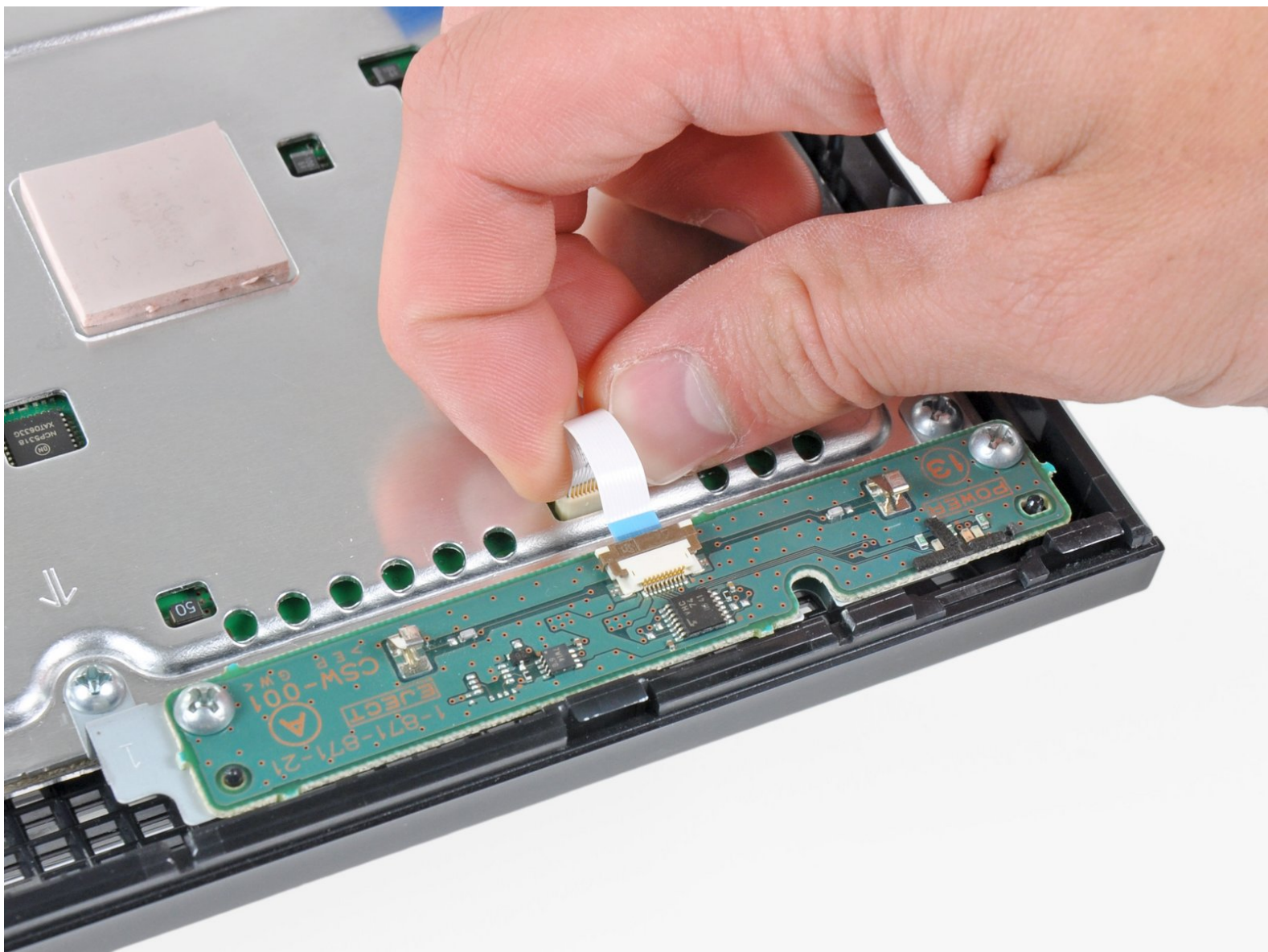




PlayStation 3 Motherboard Assembly Replacement

Written By: Walter Galan

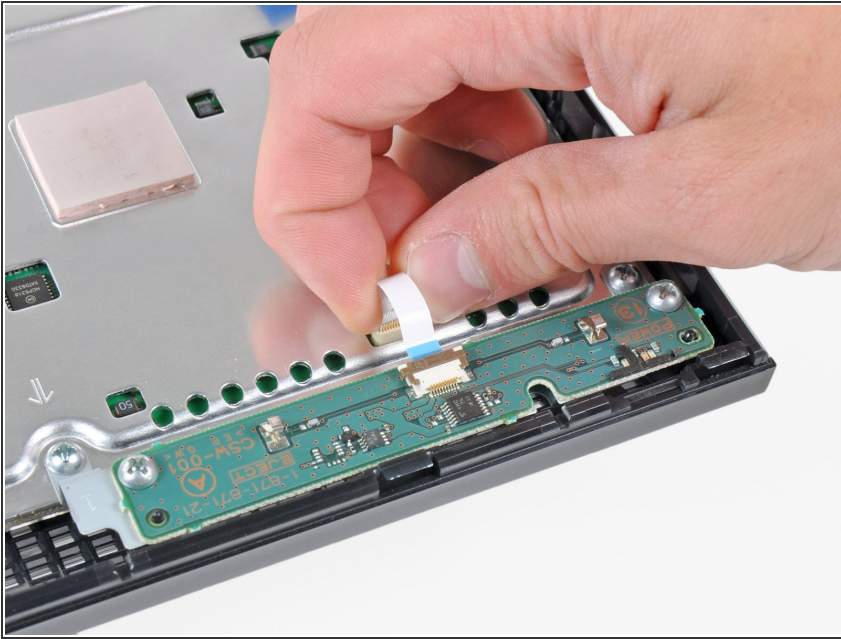




TOOLS:

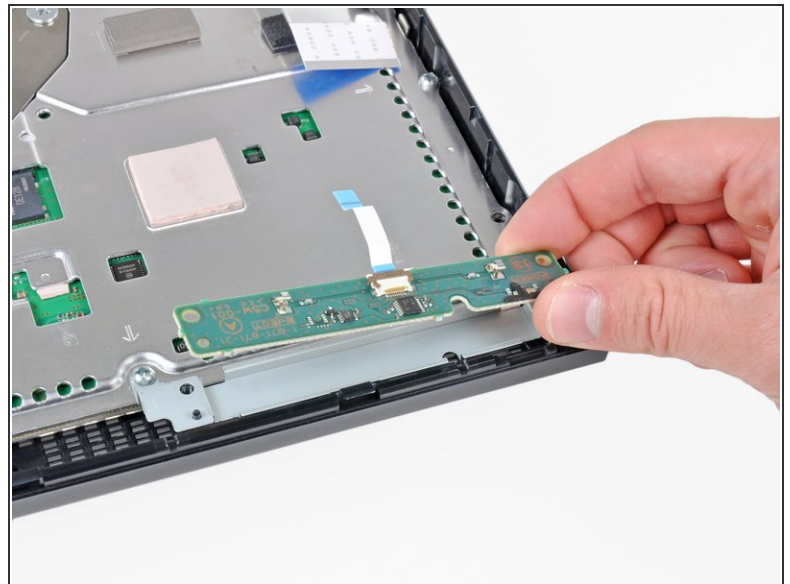
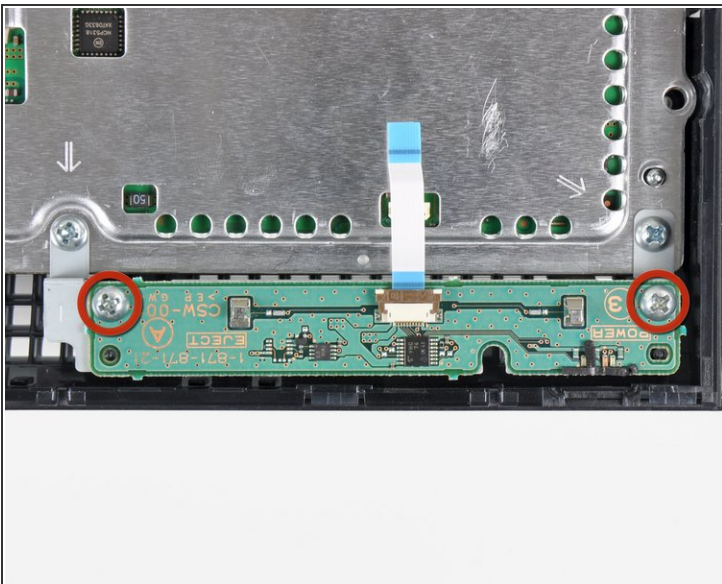
- [Phillips #0 Screwdriver](#) (1)
- [Phillips #2 Screwdriver](#) (1)
- [Spudger](#) (1)

Step 1 — Motherboard Assembly



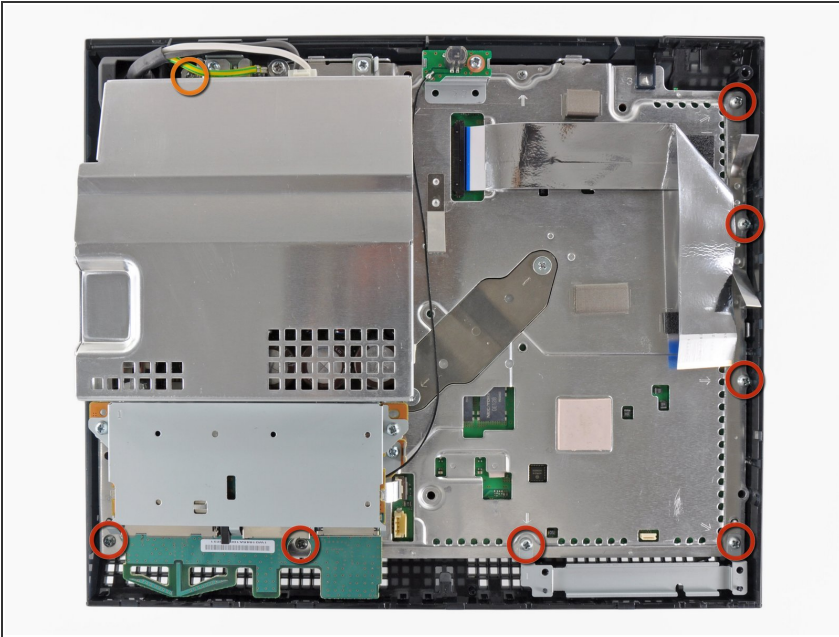
- Pull the control board ribbon cable straight up and out of its socket on the motherboard.

Step 2



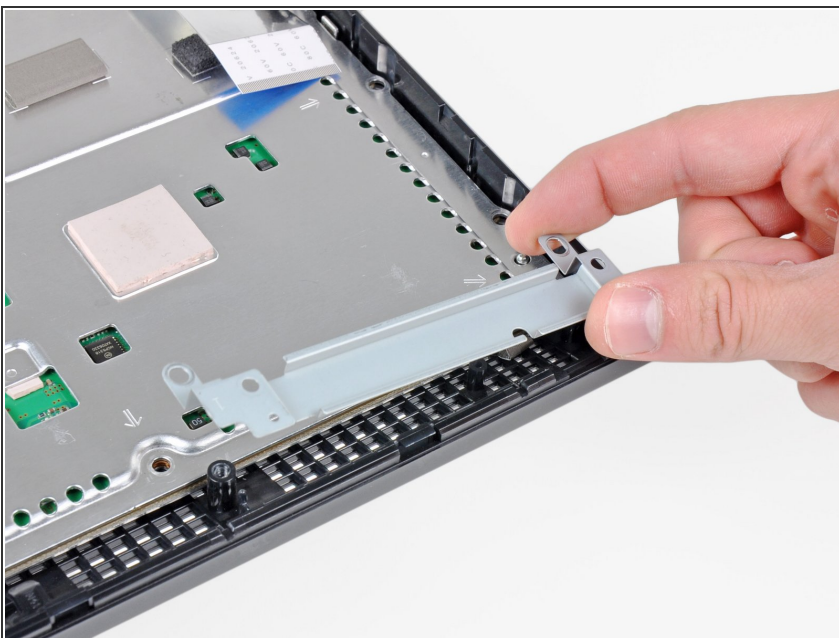
- Remove the two 12 mm Phillips screws securing the control board to the lower case.
- Remove the control board and its attached cable from the PS3.

Step 3



- Remove the following eight screws securing the motherboard assembly to the lower case:
 - Seven 12 mm Phillips screws (ph2)
 - One 30 mm Phillips screw

Step 4



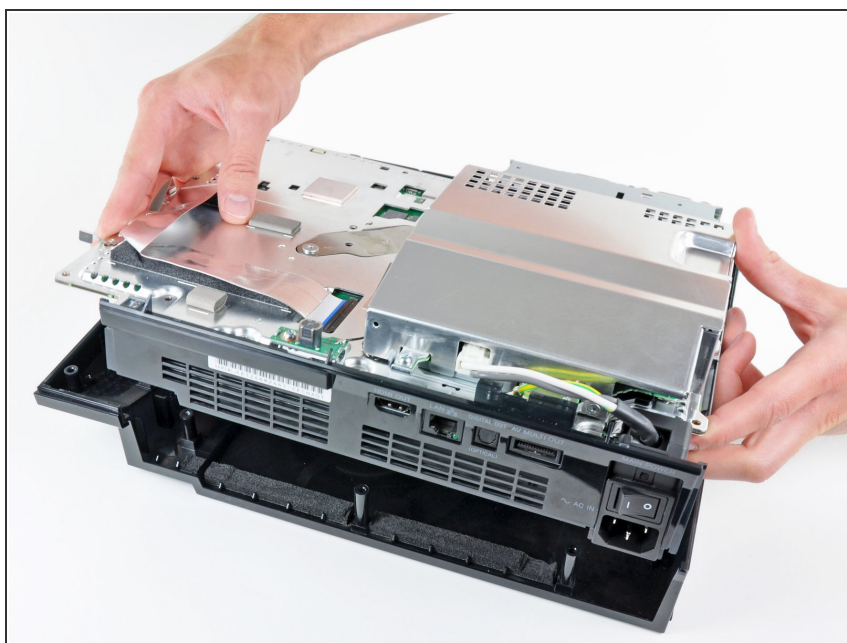
- Remove the control board bracket.

Step 5



- Use the flat end of a spudger to pry the hard drive bay cover away from the lower case.
- Remove the hard drive bay cover.

Step 6



- Lift the motherboard assembly out of the lower case.

To reassemble your device, follow these instructions in reverse order.