



# PlayStation 3 PRAM Battery Replacement

Replace a dead PRAM battery on your PS3.

Written By: Walter Galan



# INTRODUCTION

Use this guide to replace your PlayStation 3's proprietary PRAM battery.



## TOOLS:

- [Phillips #1 Screwdriver](#) (1)
- [Spudger](#) (1)
- [T10 Torx Screwdriver](#) (1)



## PARTS:

- [Sony PlayStation 3 Models A, B, C, and E PRAM Battery](#) (1)

## Step 1 — Smart Plate



- Use the tip of a spudger to remove the black rubber screw cover from the side of the PS3.
- ⓘ The screw cover may be underneath a warranty sticker. This sticker will change appearance, and show "VOID" after it has been removed.

## Step 2



- Remove the single 8.5 mm T10 Security Torx screw from the smart plate.



## Step 3



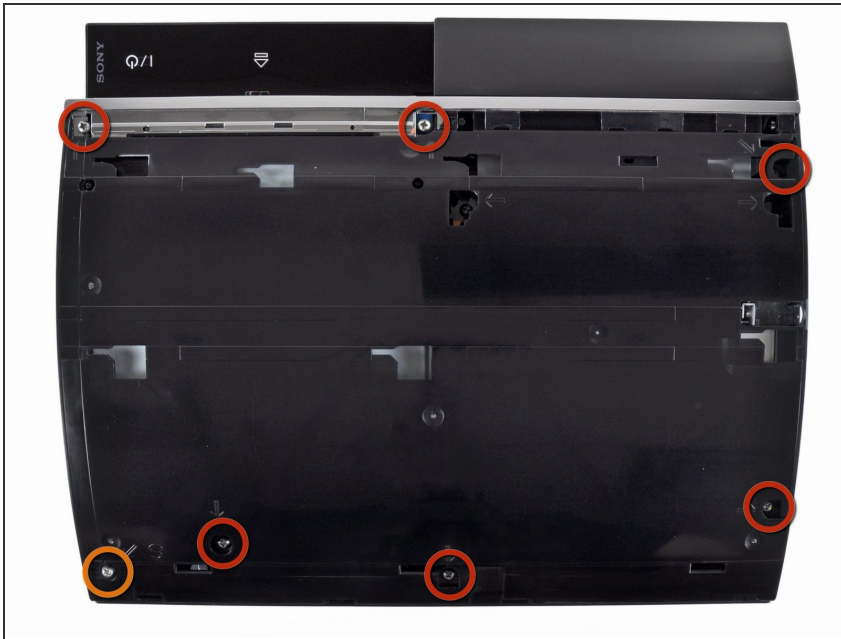
- Pull the smart plate toward the hard drive bay, then lift it off the body of the PS3.

## Step 4



⚠ Be sure to keep track of the small metal bracket loosely held in the top cover, if equipped.

## Step 5 — Top Cover



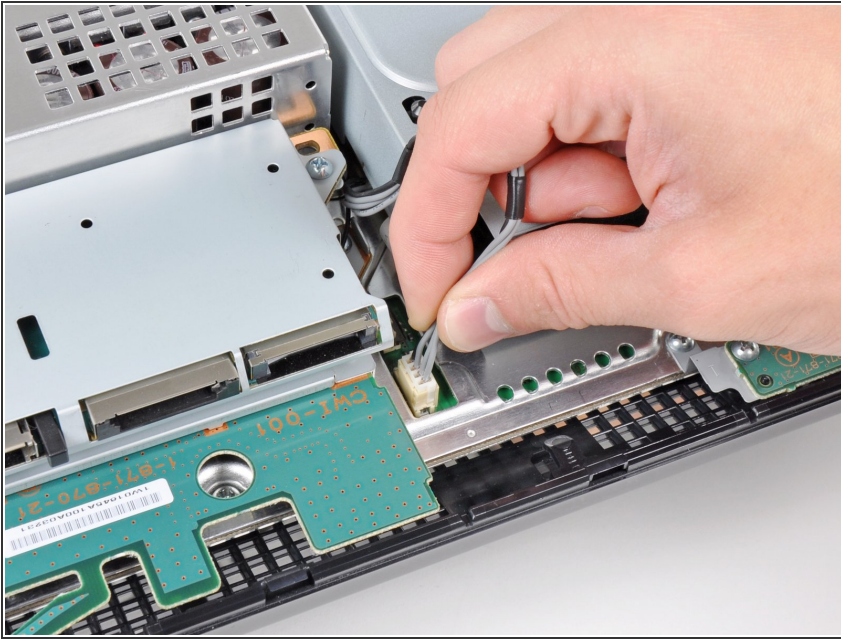
- Remove the following seven screws:
  - Six 52 mm Phillips screws
  - One 30 mm Phillips screw

## Step 6



- Lift the top cover from its rear edge and rotate it toward the front of the PS3.
- Remove the top cover.
- There is a plastic hook located in a hole on the top back right hand side corner. Carefully push the plastic hook a bit front the rear of the machine with a spudger to release the rear right of the casing.

## Step 7 — Blu-ray Disc Drive



- Disconnect the Blu-ray power cable from the motherboard.
- ❗ Pull the connector straight up and out of its socket.

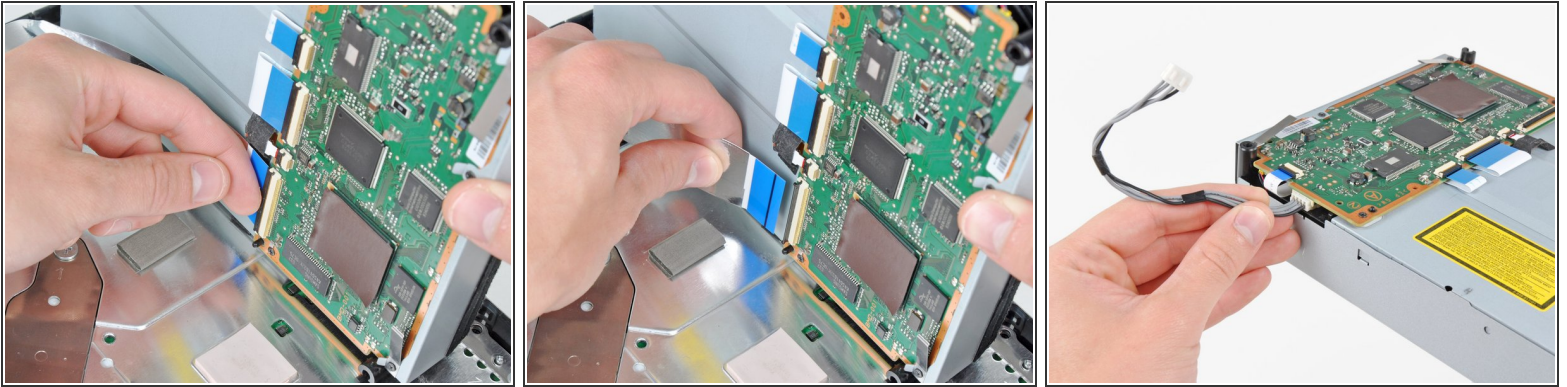
## Step 8



- Lift the Blu-ray drive from the edge nearest the power supply and rotate it away from the chassis enough to access its ribbon cable.



## Step 9



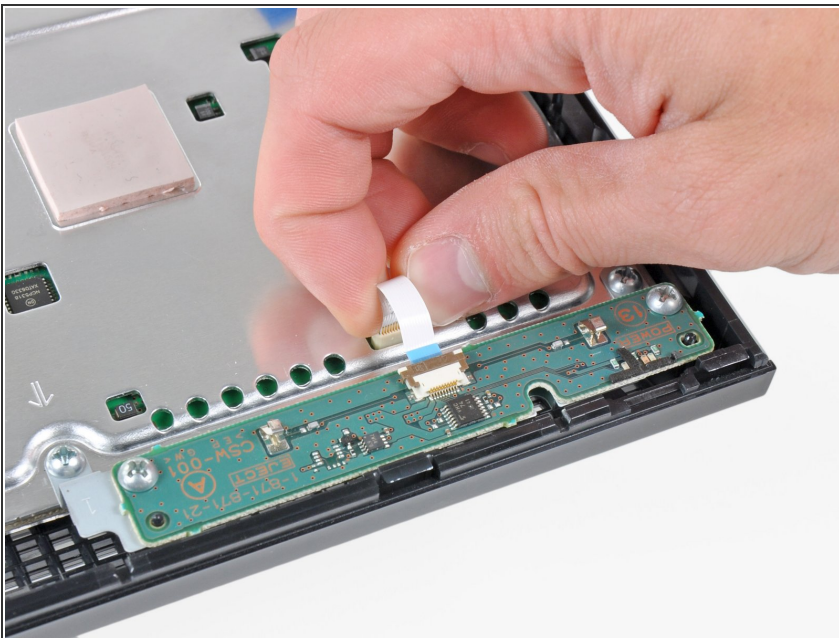
- Use your fingernail to flip up the retaining flap on the Blu-ray ribbon cable socket.

⚠ Be sure you are prying up on the retaining flap, **not** the socket itself.

- Pull the ribbon cable out of its socket.
- Remove the Blu-ray drive from the PS3.

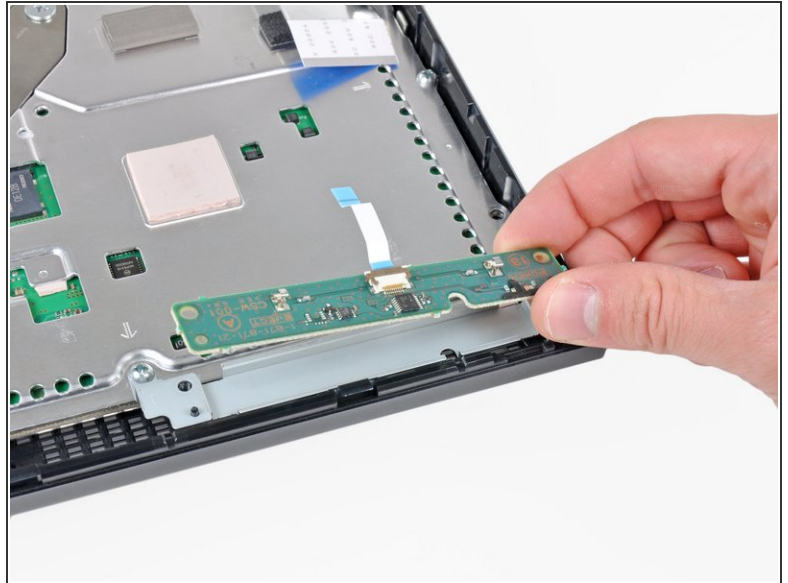
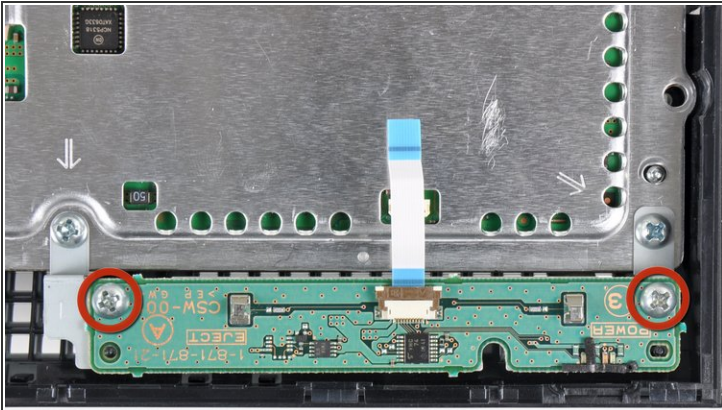
✦ If replacing the Blu-ray drive, transfer the power cable to your new drive.

## Step 10 — Motherboard Assembly



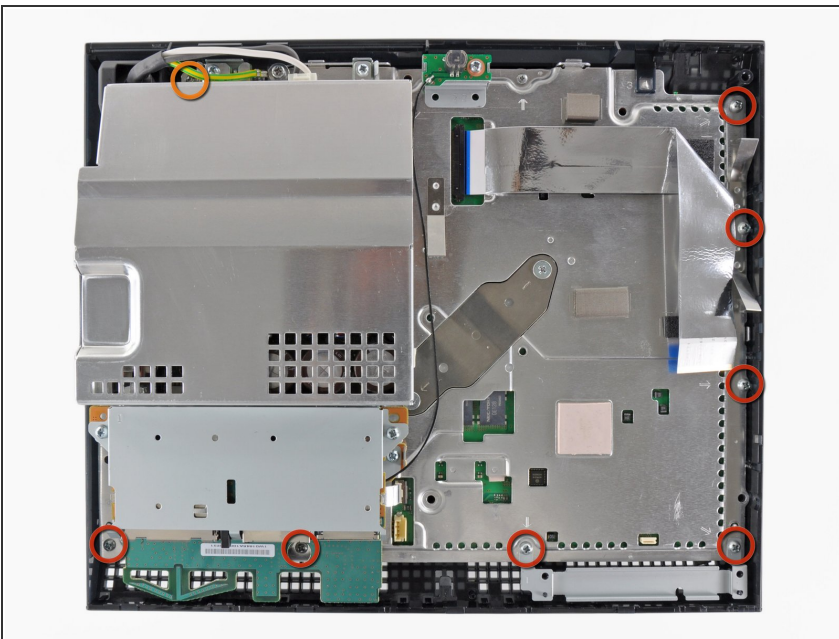
- Pull the control board ribbon cable straight up and out of its socket on the motherboard.

## Step 11



- Remove the two 12 mm Phillips screws securing the control board to the lower case.
- Remove the control board and its attached cable from the PS3.

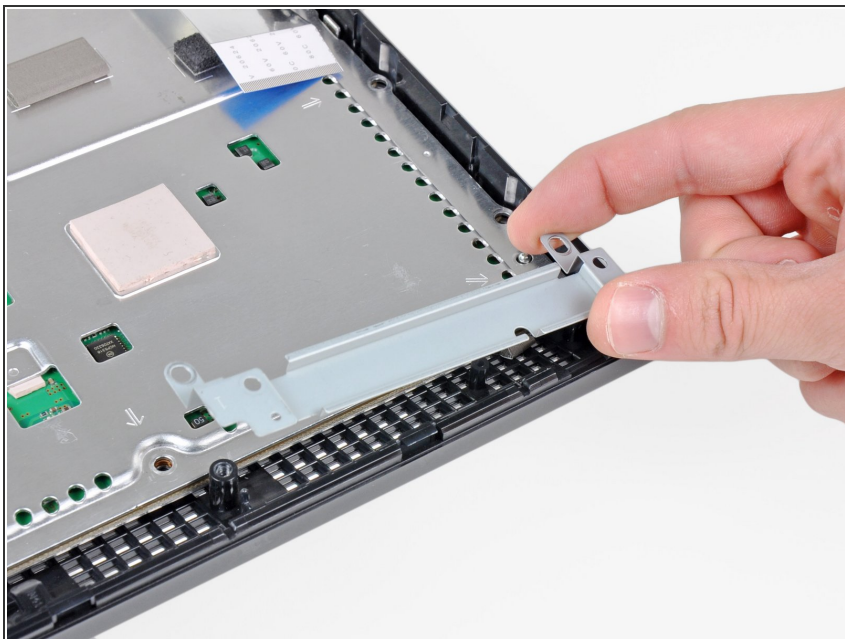
## Step 12



- Remove the following eight screws securing the motherboard assembly to the lower case:
  - Seven 12 mm Phillips screws (ph2)
  - One 30 mm Phillips screw



## Step 13



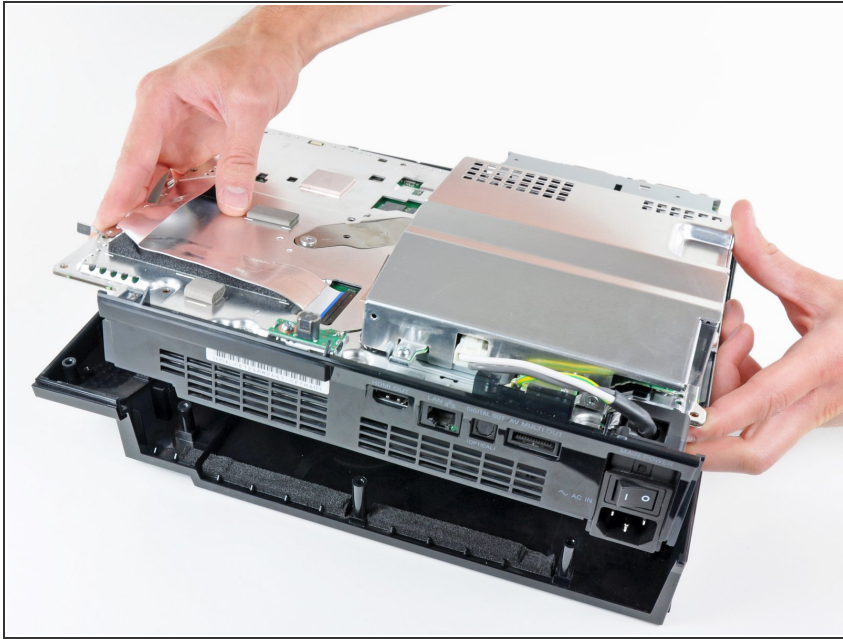
- Remove the control board bracket.

## Step 14



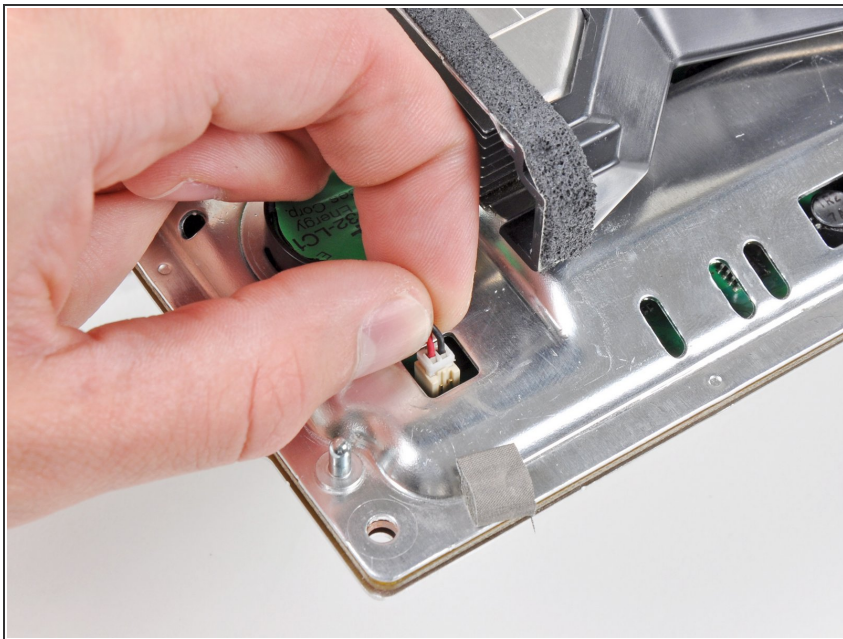
- Use the flat end of a spudger to pry the hard drive bay cover away from the lower case.
- Remove the hard drive bay cover.

## Step 15



- Lift the motherboard assembly out of the lower case.

## Step 16 — PRAM Battery



- Disconnect the PRAM battery from the motherboard.
- ⚠ Be careful when separating the connector from its socket, as the socket easily breaks off the motherboard. If possible, hold down the socket as you lift the connector.

## Step 17



- Rotate the PRAM battery counter-clockwise and remove it from the chassis.

To reassemble your device, follow these instructions in reverse order.