



PlayStation 3 Slim Laser Unit (Laser and Mechanism) Replacement

Written By: ZFix



PS3

PlayStation 3 Slim

Laser Unit replacement

INTRODUCTION

PlayStation 3 - How to replace Laser Lens and Mechanism (Laser Deck).

[video: <https://www.youtube.com/watch?v=VwWaRIjCndw>]

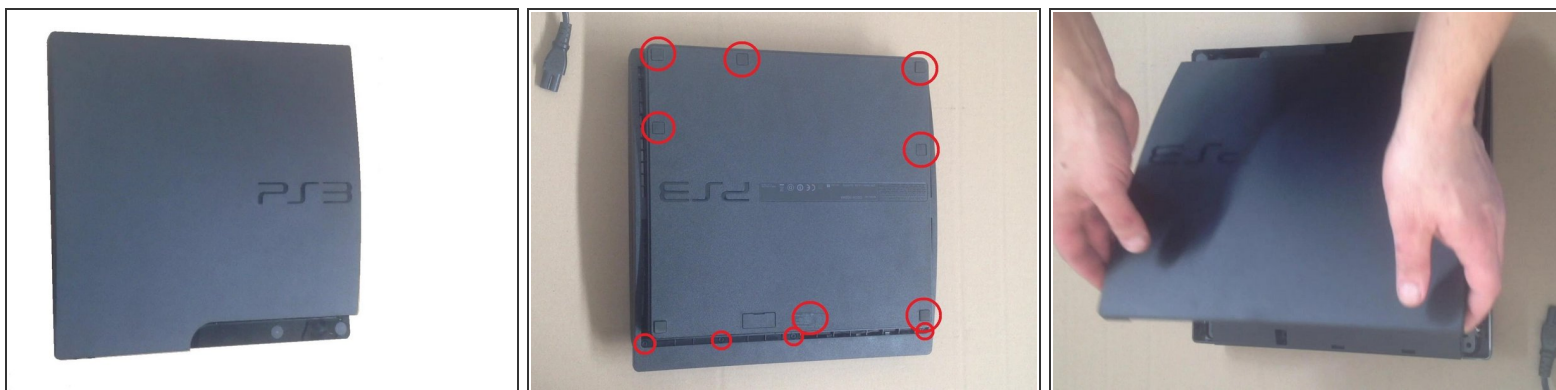
More info about disassembling, you can find in

[PlayStation 3 Slim Teardown](#)

TOOLS:

- [Phillips #00 Screwdriver](#) (1)
 - [T8 Torx Security Bit Screwdriver](#) (1)
-

Step 1 — Laser Unit (Laser and Mechanism)



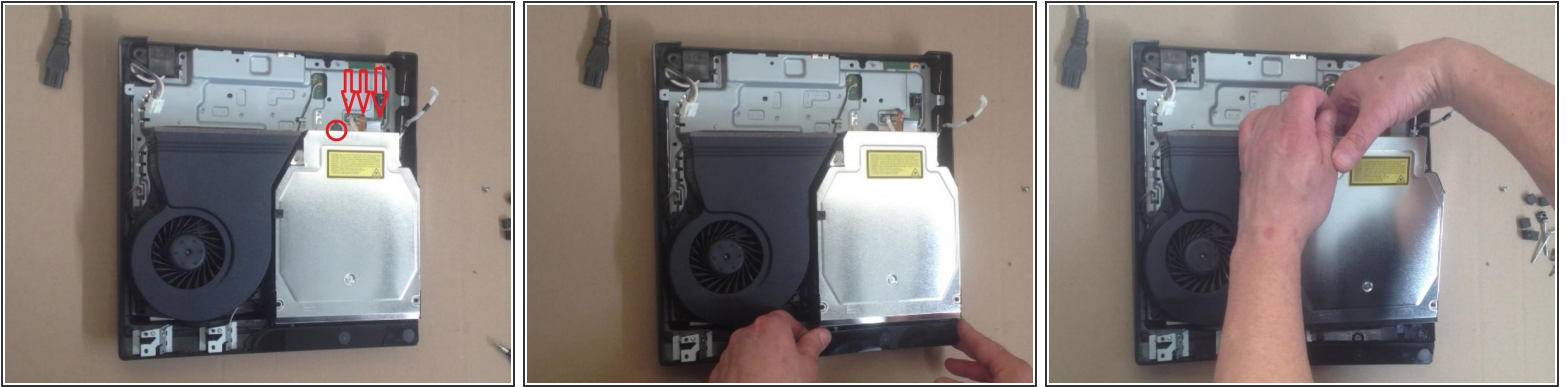
- **Disconnect all cables. You have 4x Torx T8 screws and 7x Phillips screws. Now you can remove outer case.**

Step 2



- **Remove Power Supply.**

Step 3



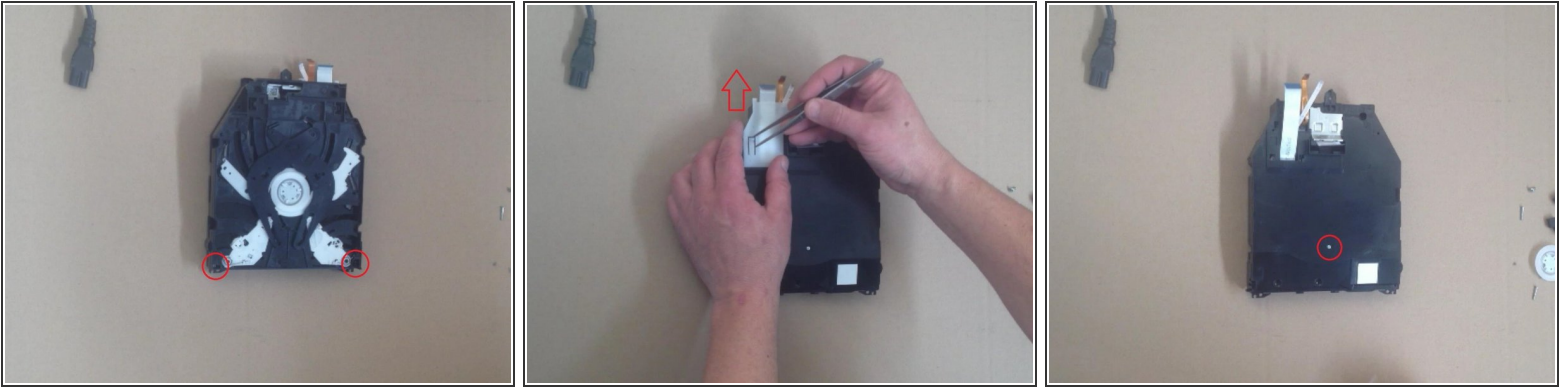
- **Separate cables, unscrew the screw and remove the Blu Ray drive.**

Step 4



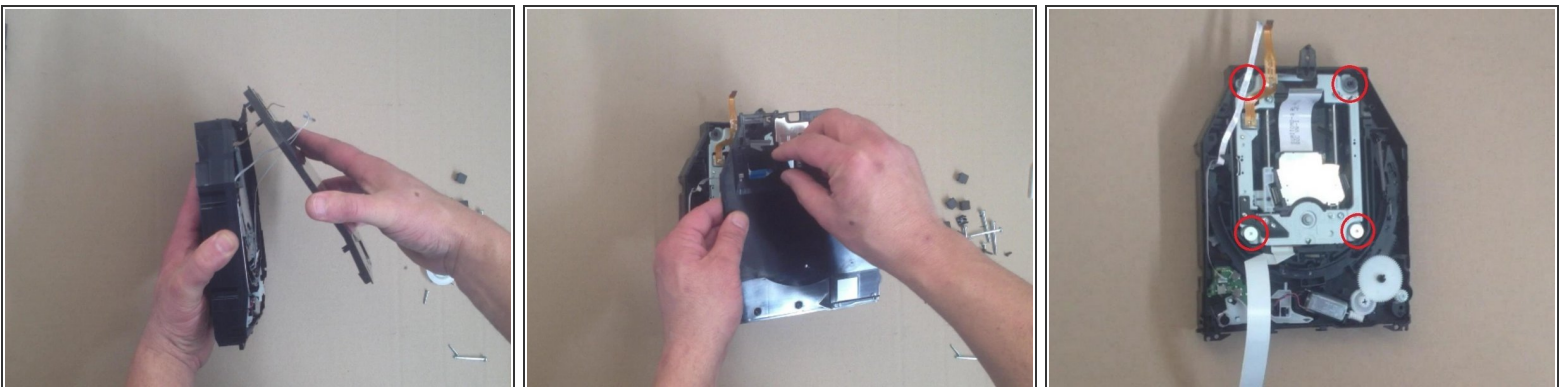
- **Disassemble the upper metal shield.**

Step 5



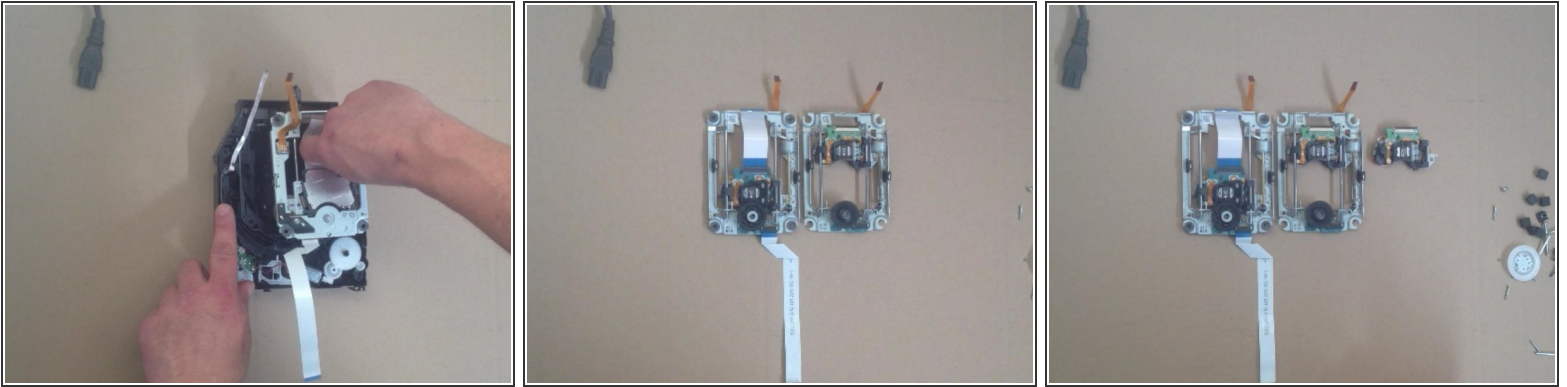
- Remove the two very small phillips screws in each lower corner referenced by the red circles.

Step 6



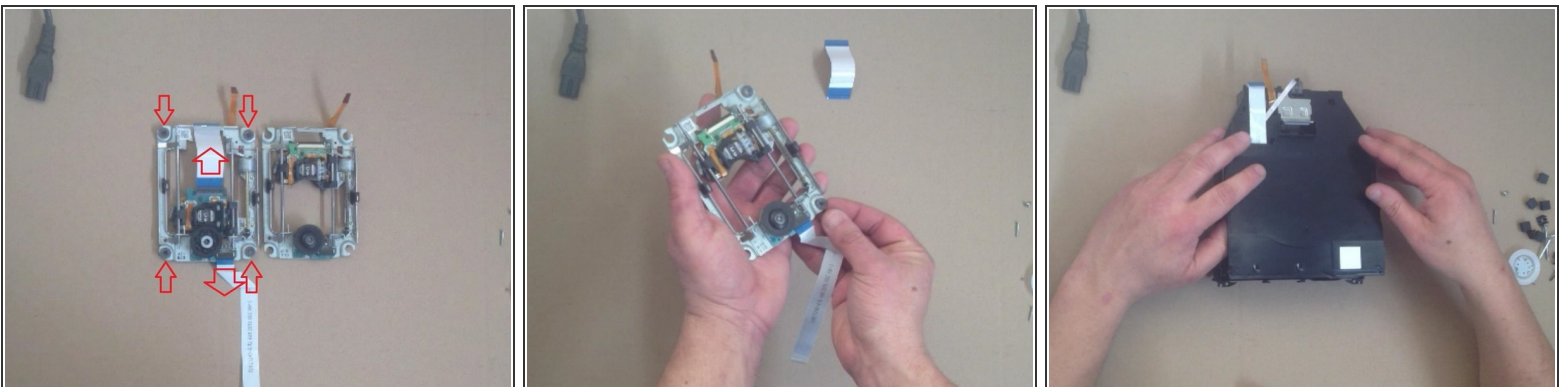
- Be careful with flex cables.

Step 7



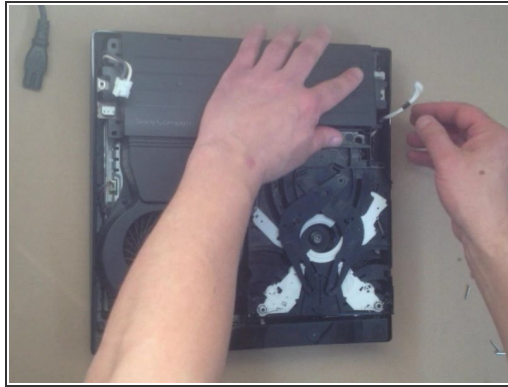
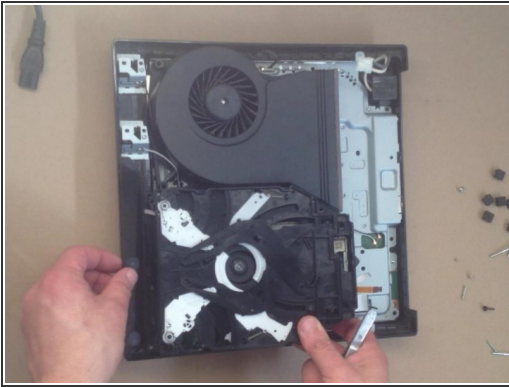
- Now you can remove the Laser Deck.

Step 8



- Transfer two flex cables and 2x rubbers.

Step 9



- **You can test the console before full assembling.**

To reassemble your device, follow these instructions in reverse order.