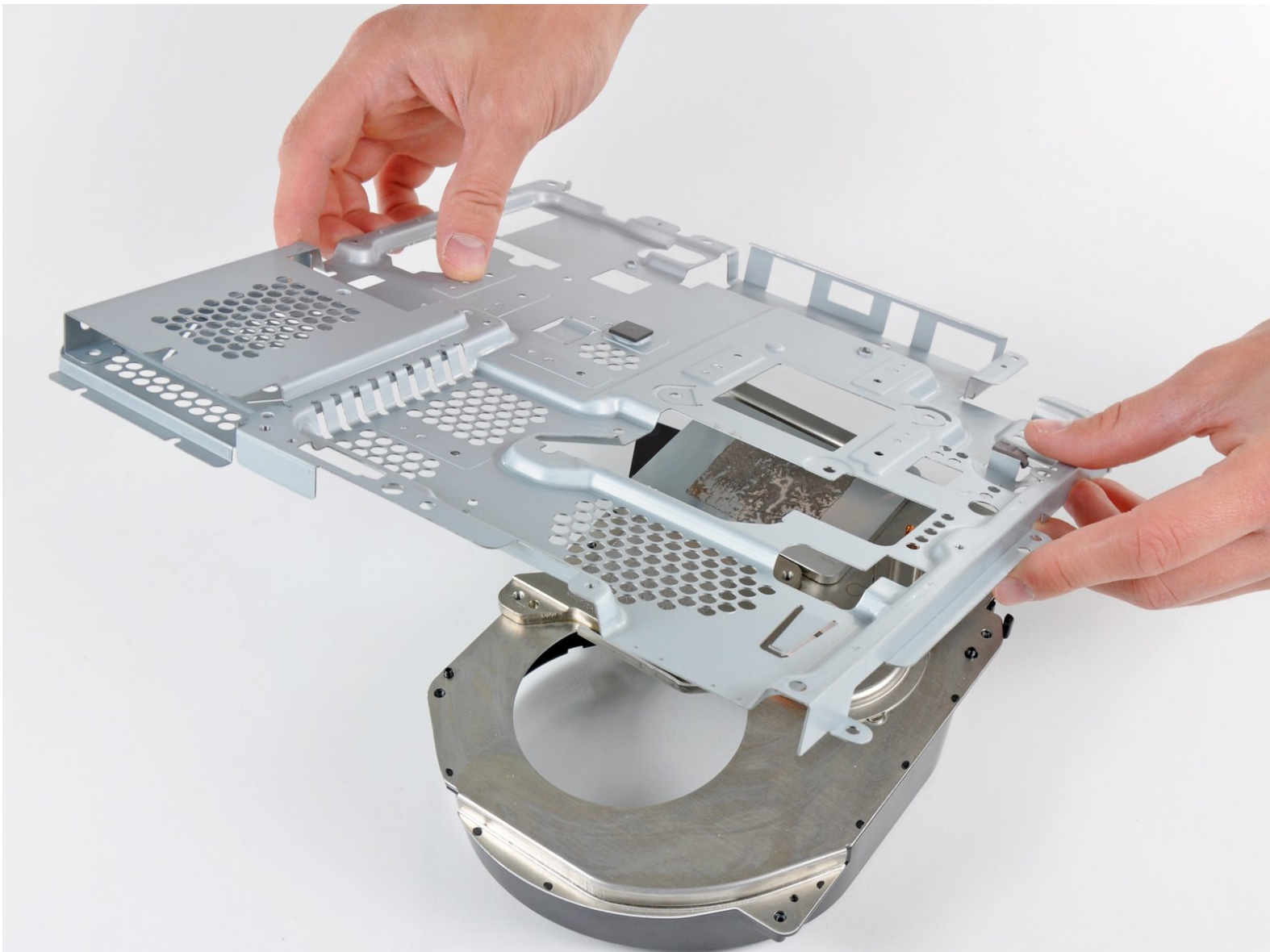




# PlayStation 3 Slim Heat Sink Replacement

Replace your PS3 Slim's heat sink and its integrated fan shroud.

Written By: Andrew Bookholt



## INTRODUCTION

Use this guide to replace your heat sink. It is essential to apply a new layer of thermal paste during reassembly.



### TOOLS:

- [Arctic Silver ArctiClean](#) (1)
- [Arctic Silver Thermal Paste](#) (1)
- [Metal Spudger](#) (1)
- [Phillips #1 Screwdriver](#) (1)
- [Spudger](#) (1)
- [T8 Torx Security Bit Screwdriver](#) (1)



### PARTS:

- [Sony PlayStation 3 Slim Heat Sink](#) (1)

## Step 1 — Top Cover



- Turn the PS3 over and lay it on its backside.
- Carefully peel the warranty sticker up off the lower case to reveal a hidden screw cover.
- ☑ To avoid activating the **VOID** that may come up, heat the sticker carefully to remove and replace it cleanly.

## Step 2



- Use the flat end of a metal spudger to pry up the seven screw covers around the edge of the lower case.

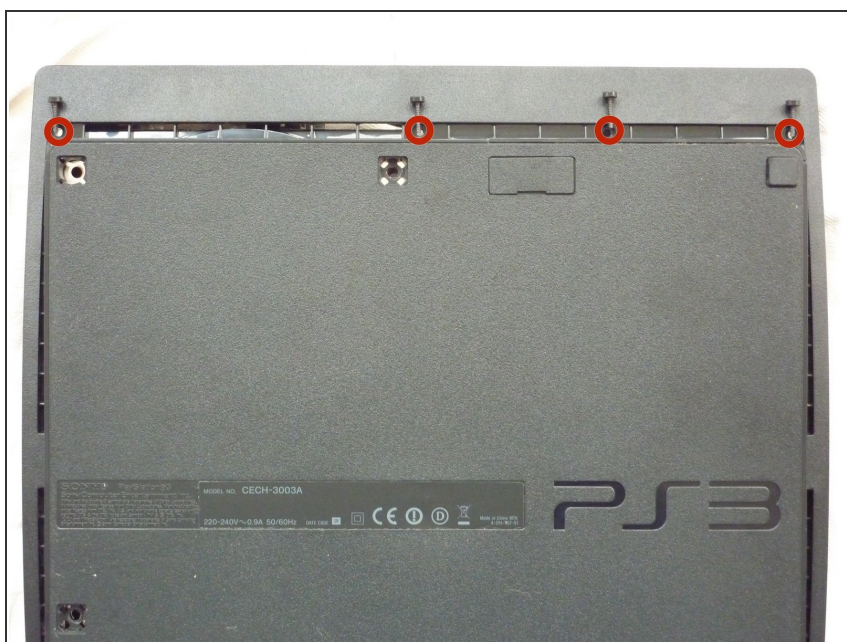


## Step 3



- Remove the seven 37 mm Phillips screws securing the top cover to the lower case.

## Step 4



- Remove the four 13.3 mm T8 security Torx screws beneath the Blu-ray drive opening. (Some models may only have three screws)

## Step 5



- Lift the top cover from its rear edge and rotate it toward the front of the PS3.
- Lift the top cover off the PS3.

## Step 6 — Power Supply



- Squeeze the AC inlet connector's locking mechanism and pull straight up to disconnect it from the power supply.



## Step 7



- Pull the DC-Out cables straight up to lift their connector up and out of its socket on the power supply.

## Step 8



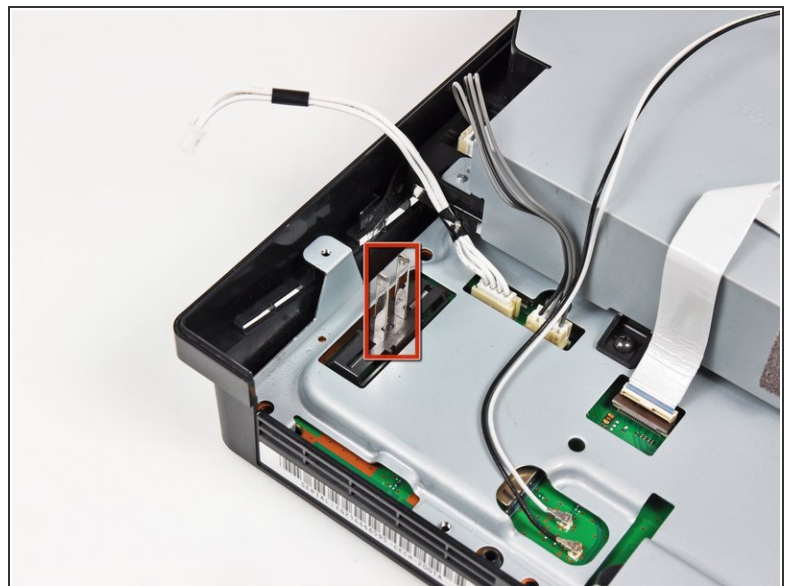
- Remove the two 7.6 mm Phillips screws securing the power supply to the lower case.

## Step 9



- Lift the power supply upward from its left edge as viewed from the front of the PS3.

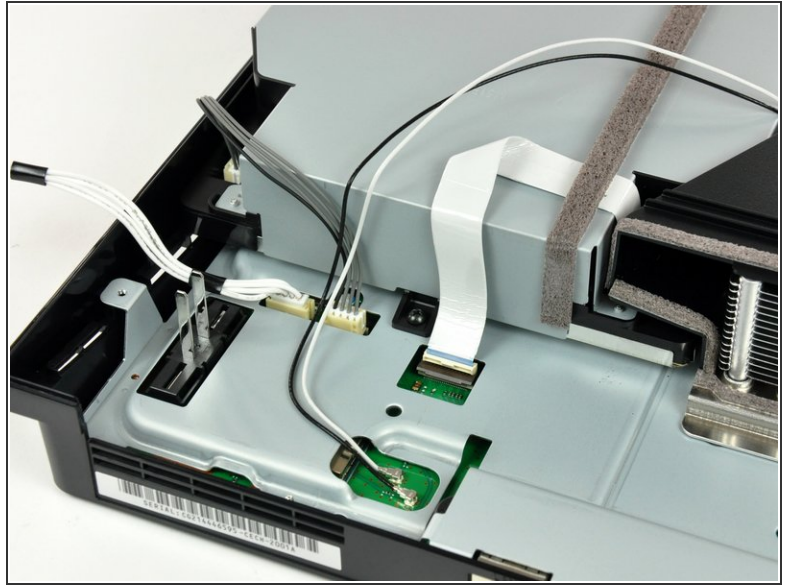
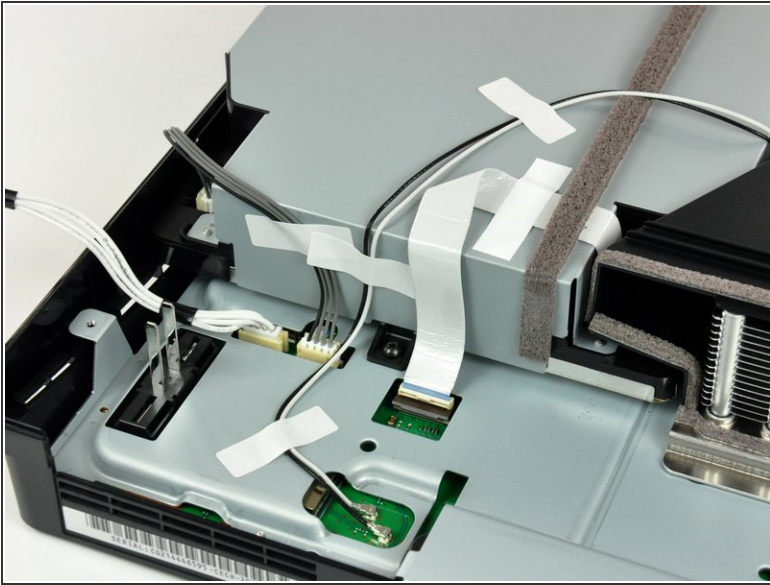
## Step 10



- Continue to lift the left edge of the power supply until it lifts off the two metal posts shown in the second picture.
- Remove the power supply from the PS3, minding any cables that may get caught.

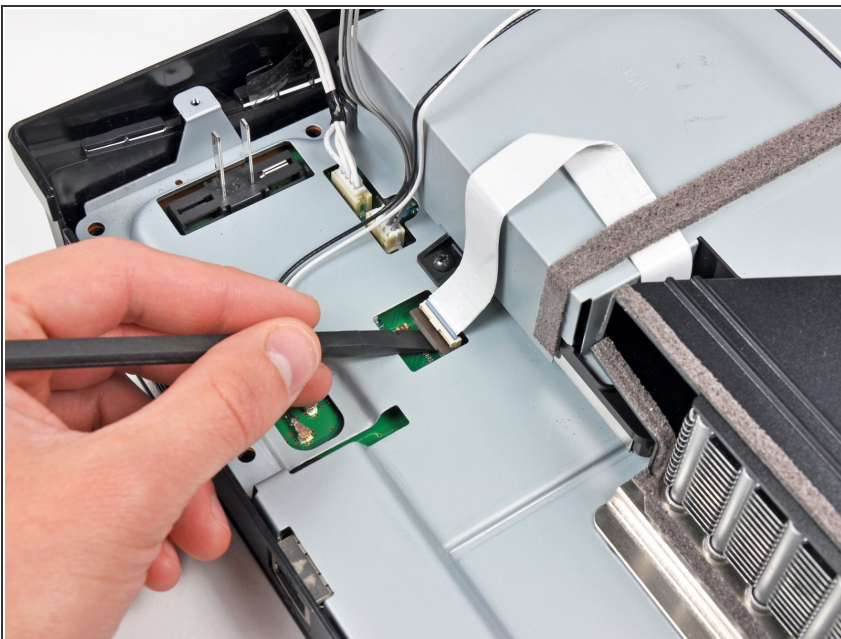


## Step 11 — Blu-ray Disc Drive



- ⓘ If present, remove the pieces of tape securing the cables to the body of the Blu-ray drive.

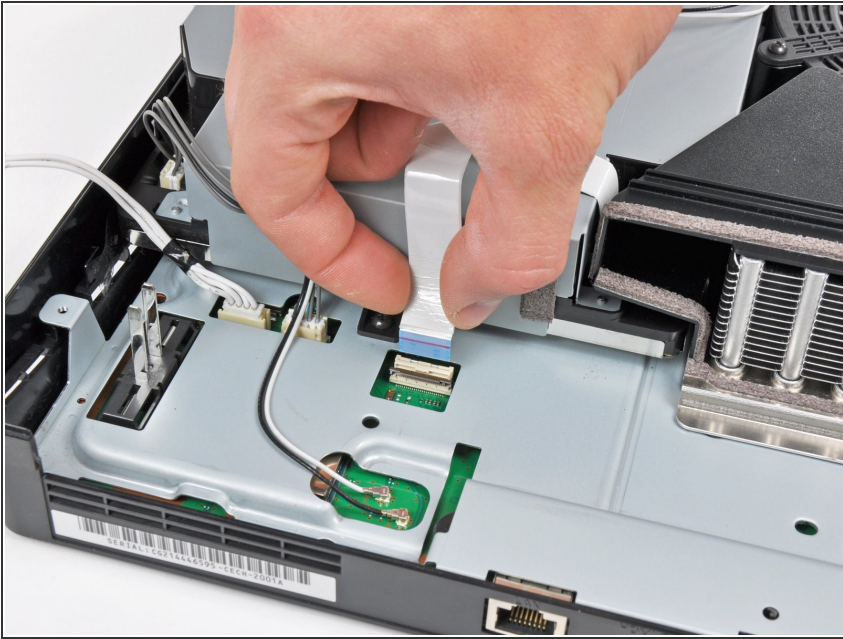
## Step 12



- Use the flat end of a spudger or your fingernail to flip up the retaining flap on the Blu-ray ribbon cable socket.
- ⚠ Be sure you are prying up on the movable retaining flap, **not** the socket itself.



## Step 13



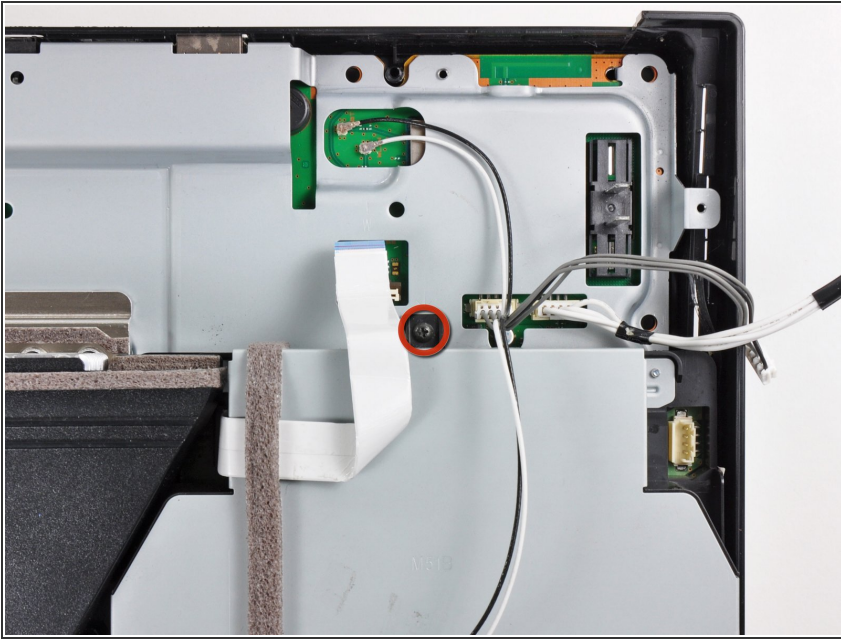
- Pull the Blu-ray ribbon cable straight up and out of its socket.

## Step 14



- Pull the Blu-ray power cable straight up to lift its connector out of the socket on the Blu-ray drive.

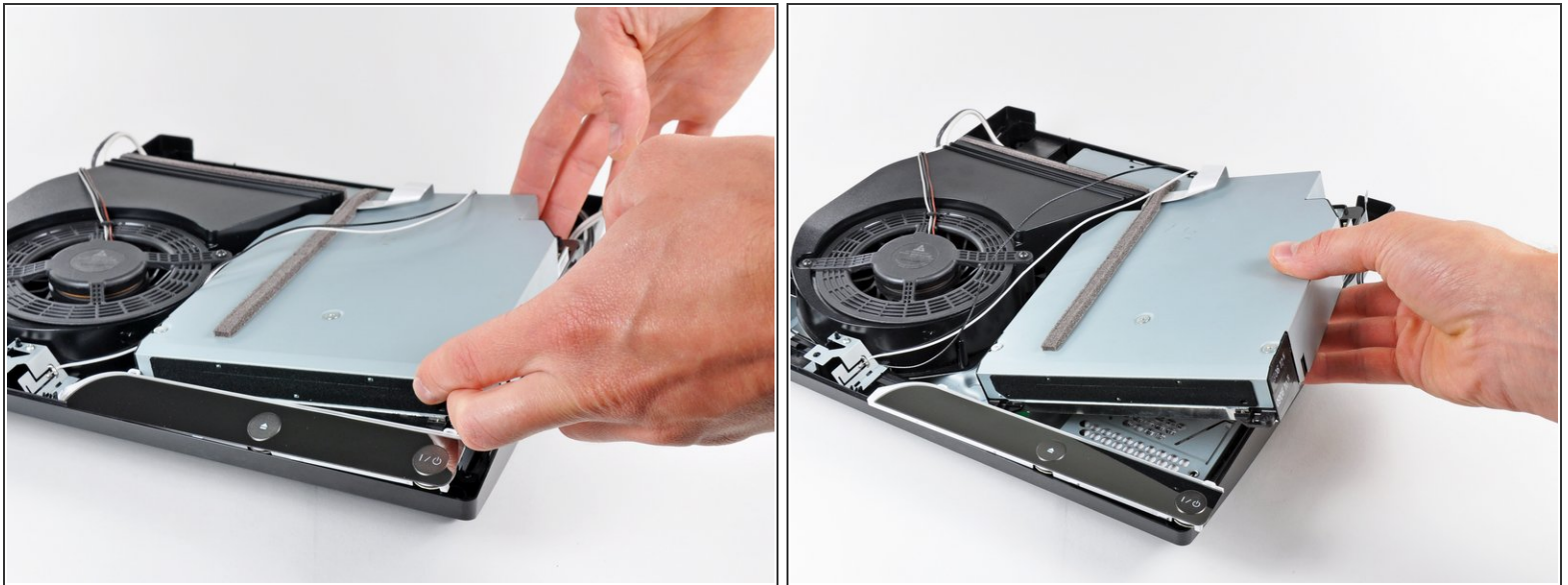
## Step 15



- Remove the single 9.5 mm Phillips screw securing the Blu-ray drive to the lower case.



## Step 16



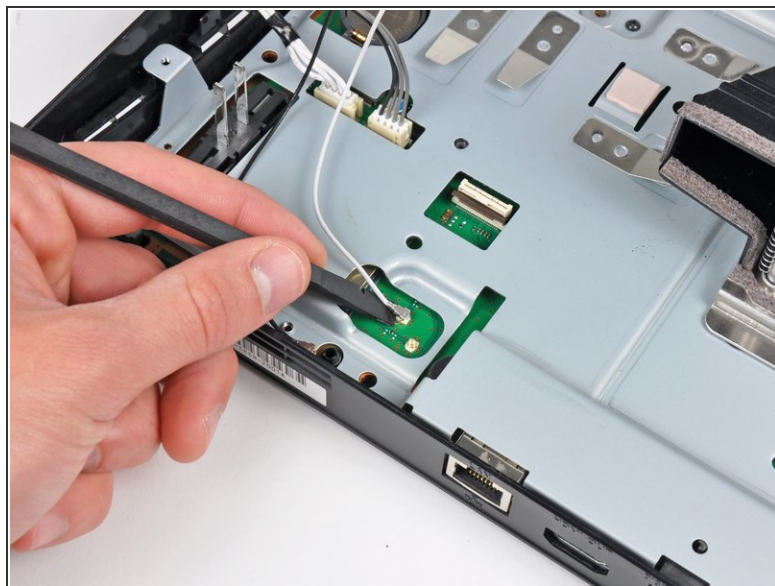
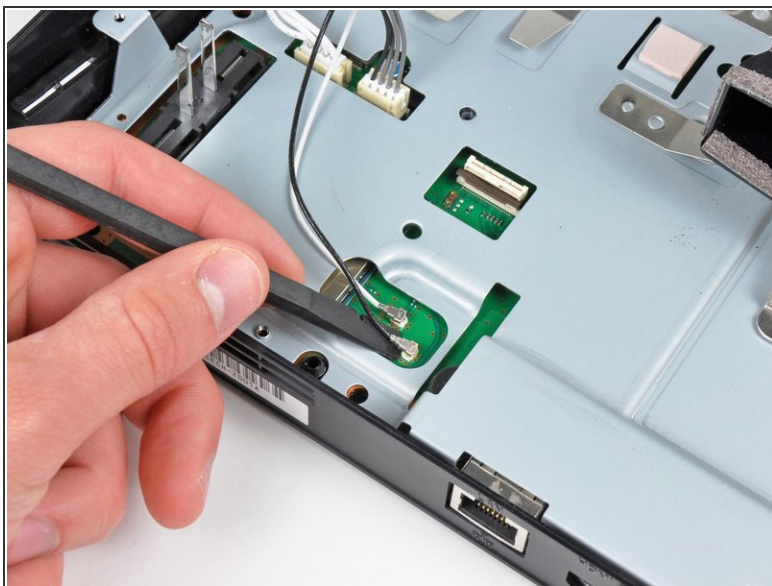
- Lift the Blu-ray drive slightly by its right edge to dislodge the control board from its housing.
  - Remove the Blu-ray drive from the PS3.
- ⚠ After you reinstall the Blu-ray drive, be sure the control board is firmly seated in the lower case before proceeding.
- ℹ If replacing the Blu-ray drive with a new drive, [swap the circuit board from your old drive into the new drive](#).

## Step 17 — Motherboard Assembly



- Pull the AC-In cables upward to remove the AC inlet from the lower case.

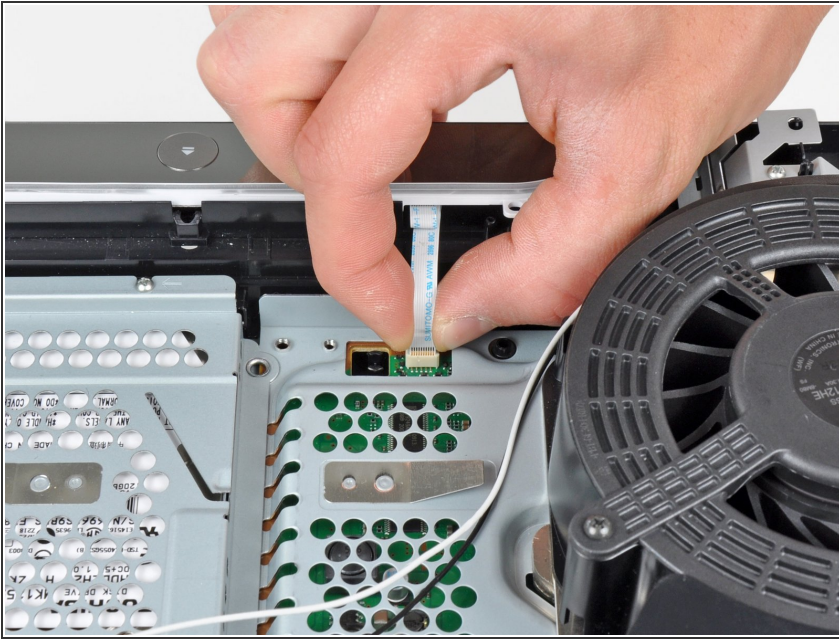
## Step 18



- Use the flat end of a spudger to pry both antenna connectors up from their sockets on the motherboard.



## Step 19



- Pull the control board ribbon cable up and out of its socket on the motherboard.
- Remove the control board.

## Step 20



- Turn the PS3 over and lay it on its backside.
- Use the flat edge of a metal spudger to pop up the small access door on the bottom cover near the front of the PS3.
- Remove the blue Phillips screw hidden under the access door.

## Step 21



- Slide the hard drive bay cover toward the right side of the lower case, then pull it away from the front edge to remove it from the PS3.

## Step 22



- Using its attached metal handle, pull the hard drive out of its bay.

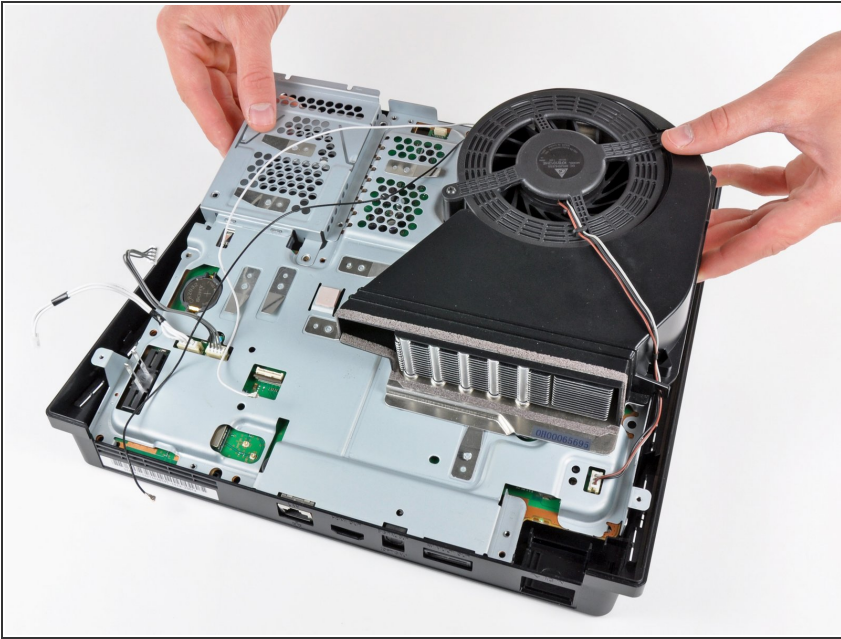


## Step 23




- Remove the following five screws securing the motherboard assembly to the lower case:
  - Two silver 6 mm Phillips
  - Three black 8 mm Phillips

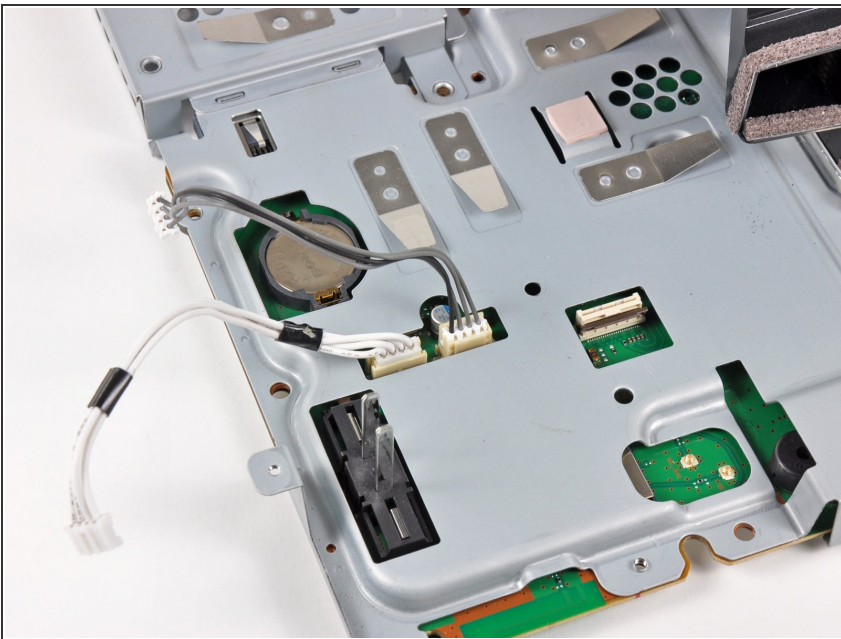
## Step 24




- Lift the motherboard assembly from its front edge and remove it from the lower case, minding the antenna cable still attached to the lower case.

 Be careful not to bend the metal antenna bodies as you lift the motherboard assembly.

## Step 25 — Top Shield Assembly

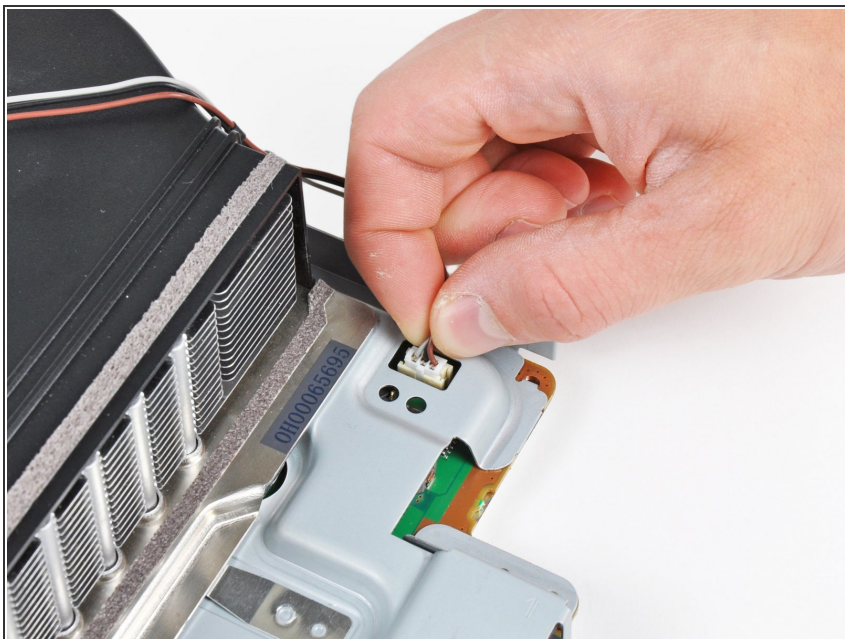


- Disconnect the DC-In and Blu-ray power cables from the motherboard.

 Pull the cables straight upward to lift the connectors up and out of their sockets on the motherboard.

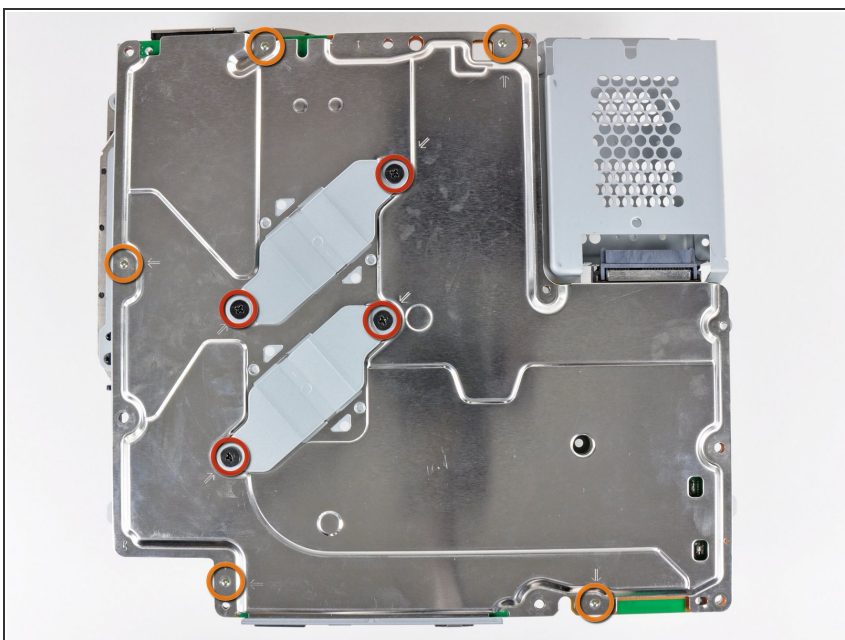


## Step 26



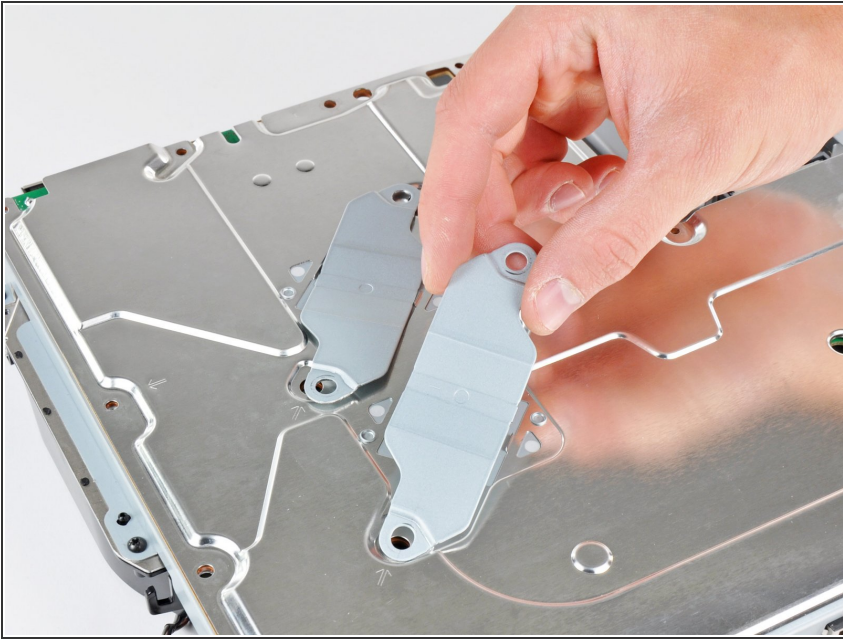
- Pull the fan cables straight up to lift the fan connector up and out of its socket on the motherboard.

## Step 27



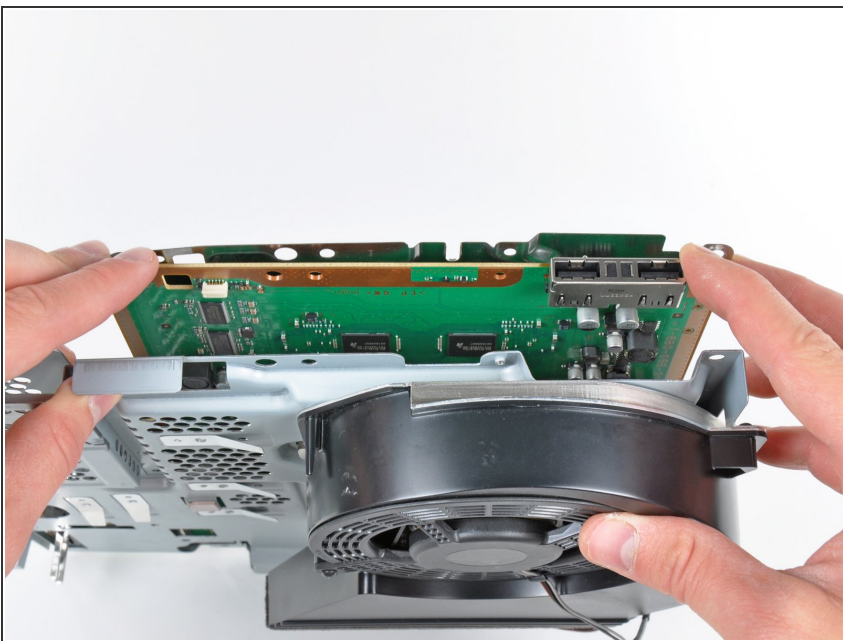
- Remove the following nine screws holding the motherboard assembly together:
  - Four 14.8 mm shouldered Phillips
  - Five 9.5 mm Phillips

## Step 28



- Remove the two heat sink clamps from the bottom of the motherboard assembly.

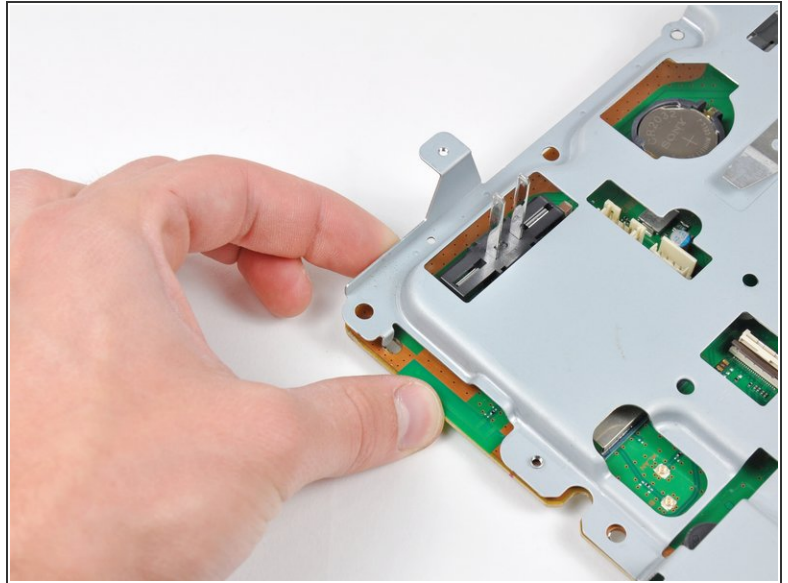
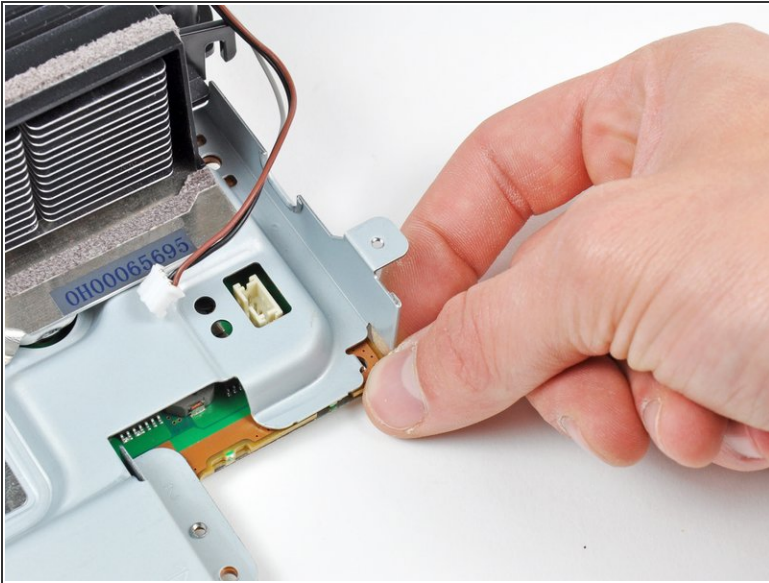
## Step 29



- ⓘ If necessary, gently pry the motherboard off the top shield near the heat sink and its shroud.

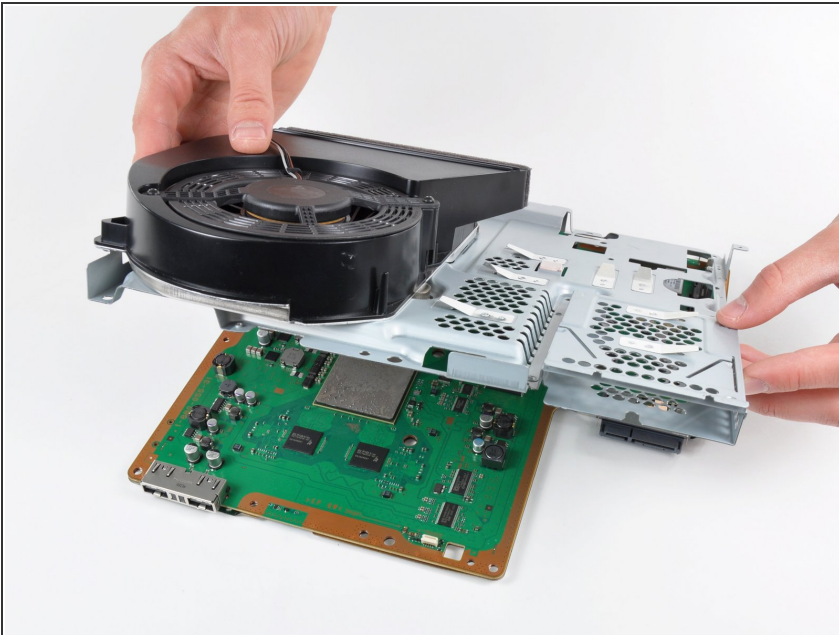


## Step 30



- Gently press the board away from the top shield assembly near the fan connector and the corner of the board near the wireless sockets.

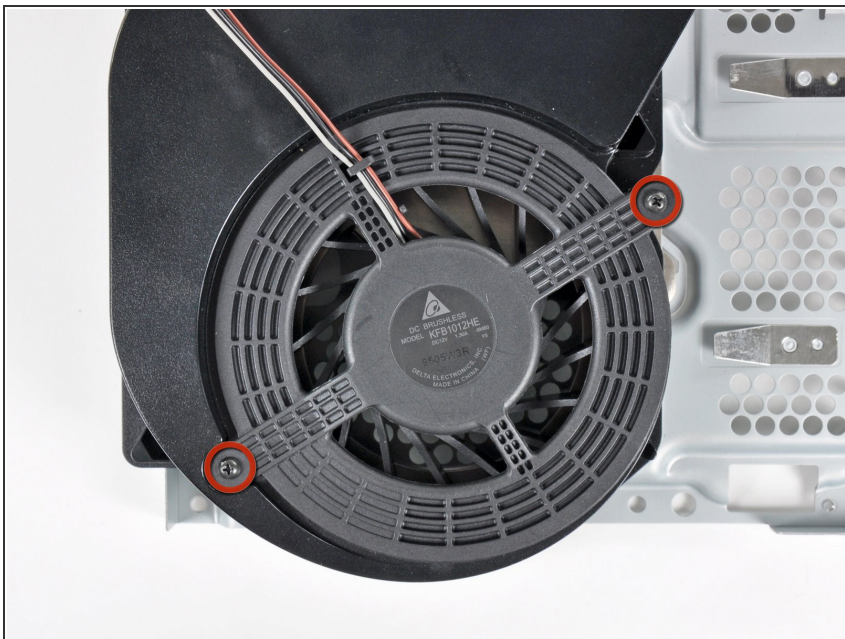
## Step 31



- Lift the top shield assembly off the motherboard from its front edge.
- ⚠ Be careful not to damage the sockets as you rotate the top shield assembly away from the motherboard.



## Step 32 — Heat Sink



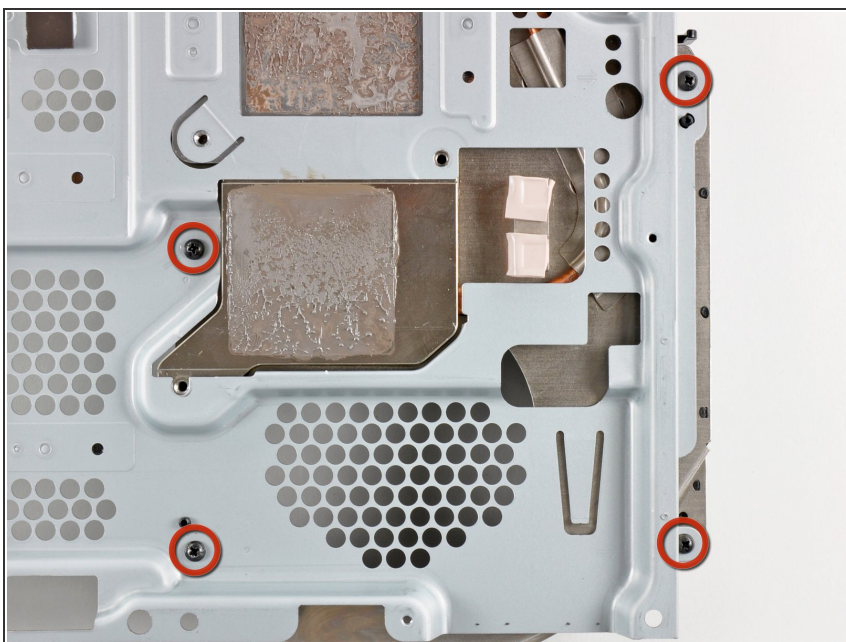
- Remove the two 9.5 mm Phillips screws securing the fan to the heat sink.

## Step 33



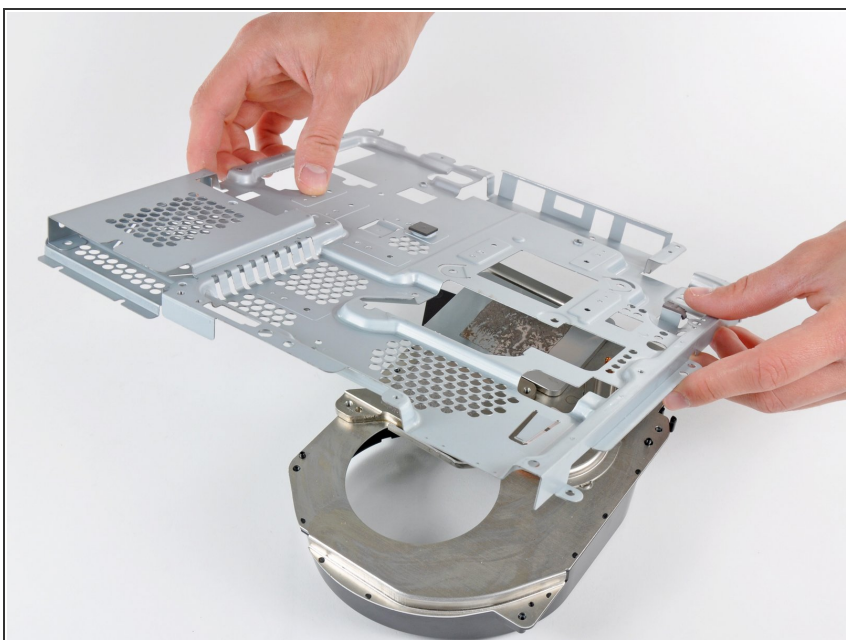
- Remove the fan from the heat sink, minding the cables that may get caught on the fan shroud.

## Step 34



- Remove the four 9.5 mm Phillips screws securing the heat sink to the top shield.

## Step 35



- Lift the top shield off the heat sink.
- ★ Before installing the heat sink onto the motherboard, it is essential to apply a new layer of thermal paste. [This](#) guide will show you how to do it.

To reassemble your device, follow these instructions in reverse order.