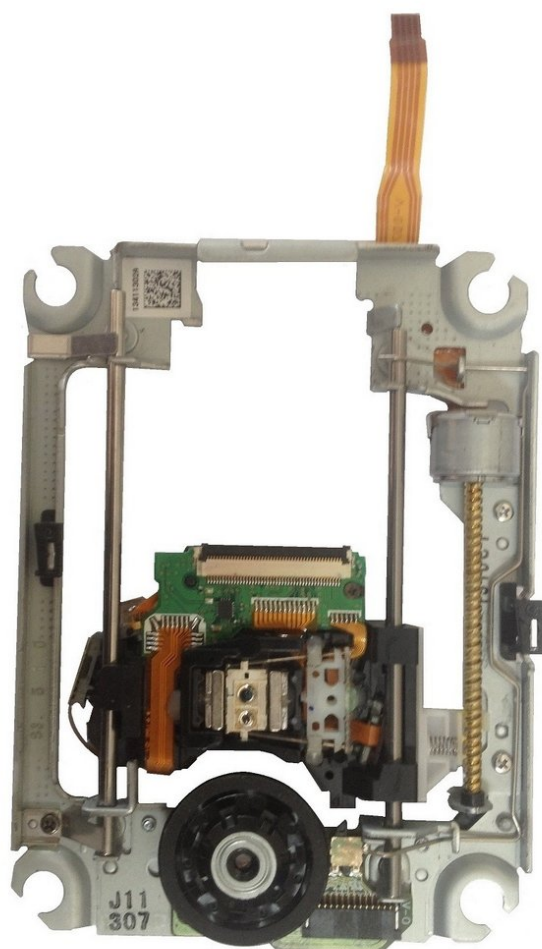




PlayStation 3 Slim Laser lens Replacement

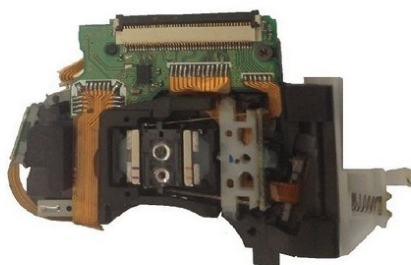
PlayStation 3 Slim Laser lens Replacement

Written By: ZFix



PS3
PlayStation 3 slim

**laser lens
replacement**



INTRODUCTION

Video tutorial - how to replace Laser Lens only:

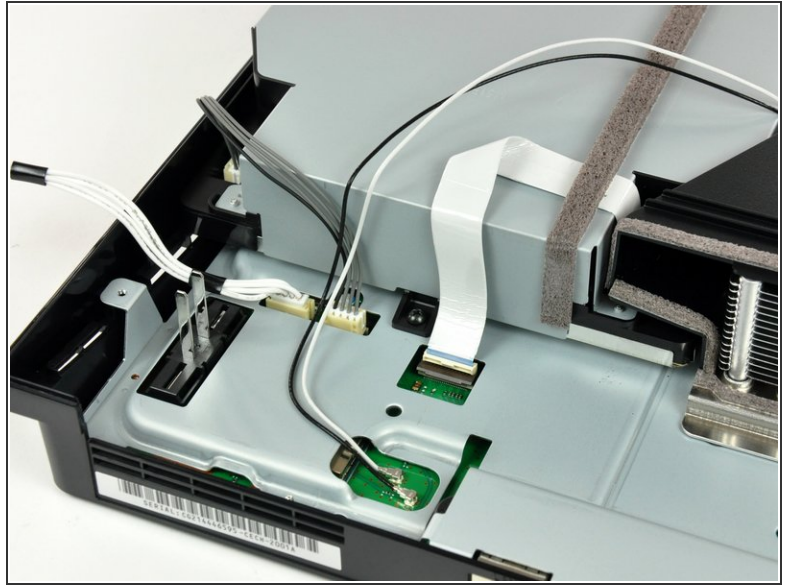
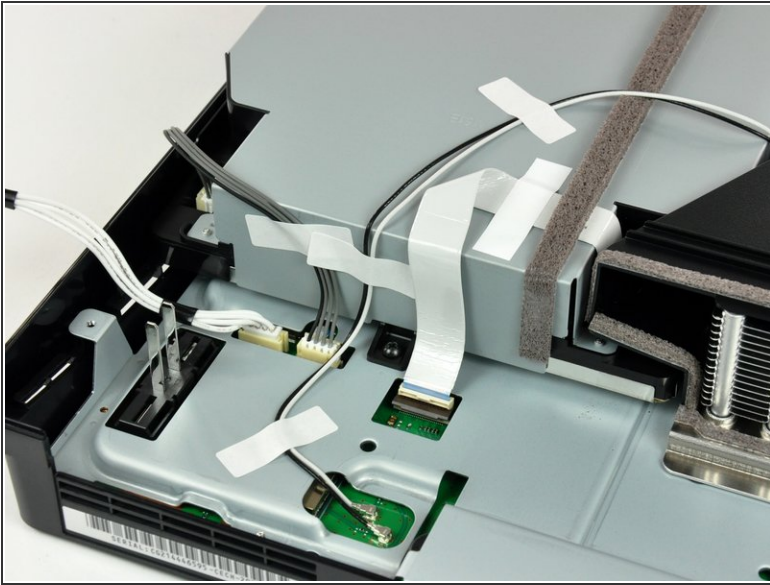
[video: <https://www.youtube.com/watch?v=GvL3r8N1-dc>]




TOOLS:

- [Metal Spudger](#) (1)
 - [Phillips #1 Screwdriver](#) (1)
 - [Spudger](#) (1)
 - [T8 Torx Security Bit Screwdriver](#) (1)
-


Step 1 — Blu-ray Disc Drive



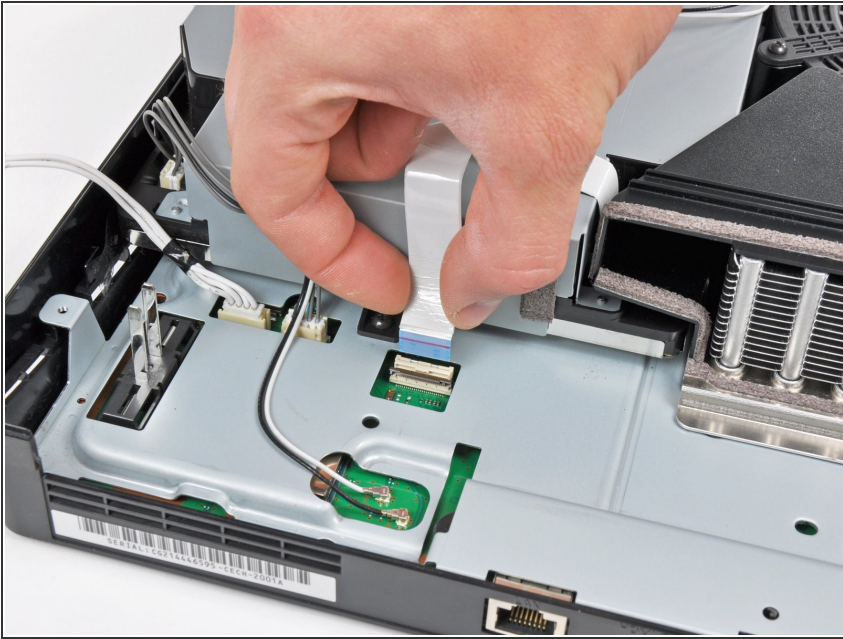
 If present, remove the pieces of tape securing the cables to the body of the Blu-ray drive.

Step 2



- Use the flat end of a spudger or your fingernail to flip up the retaining flap on the Blu-ray ribbon cable socket.
-  Be sure you are prying up on the movable retaining flap, **not** the socket itself.

Step 3



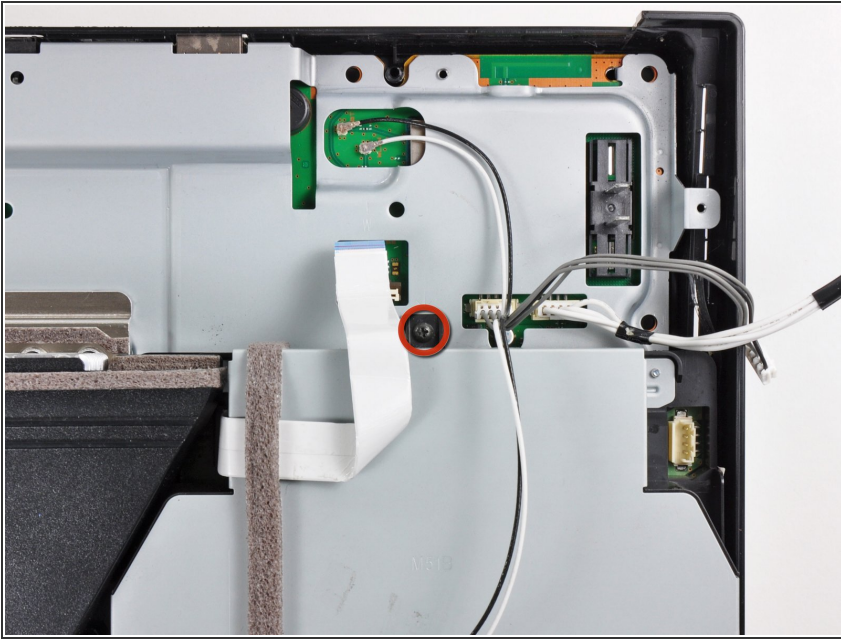
- Pull the Blu-ray ribbon cable straight up and out of its socket.

Step 4



- Pull the Blu-ray power cable straight up to lift its connector out of the socket on the Blu-ray drive.

Step 5





- Remove the single 9.5 mm Phillips screw securing the Blu-ray drive to the lower case.

Step 6



- Lift the Blu-ray drive slightly by its right edge to dislodge the control board from its housing.
- Remove the Blu-ray drive from the PS3.

 After you reinstall the Blu-ray drive, be sure the control board is firmly seated in the lower case before proceeding.

 If replacing the Blu-ray drive with a new drive, [swap the circuit board from your old drive into the new drive](#).

To reassemble your device, follow these instructions in reverse order.