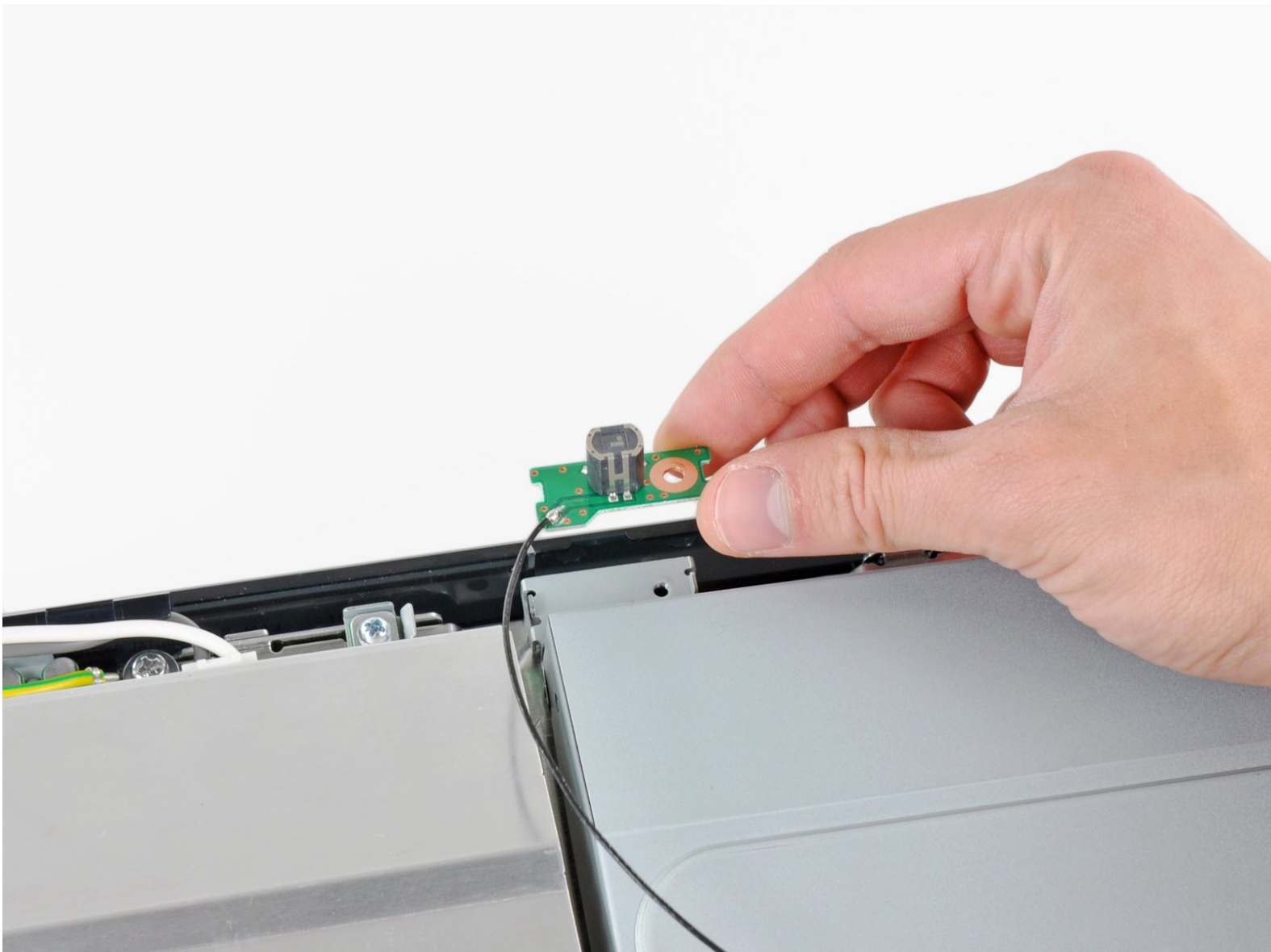




PlayStation 3 Wi-Fi Antenna Replacement

Replace your PS3's Wi-Fi antenna.

Written By: Walter Galan



INTRODUCTION

Use this guide to replace your Wi-Fi antenna to regain wireless internet connectivity.



TOOLS:

- [Phillips #1 Screwdriver](#) (1)
- [Spudger](#) (1)
- [T10 Torx Screwdriver](#) (1)



PARTS:

- [Sony PlayStation 3 Wi-Fi Antenna](#) (1)

Step 1 — Smart Plate



- Use the tip of a spudger to remove the black rubber screw cover from the side of the PS3.
- ⓘ The screw cover may be underneath a warranty sticker. This sticker will change appearance, and show "VOID" after it has been removed.

Step 2



- Remove the single 8.5 mm T10 Security Torx screw from the smart plate.


Step 3



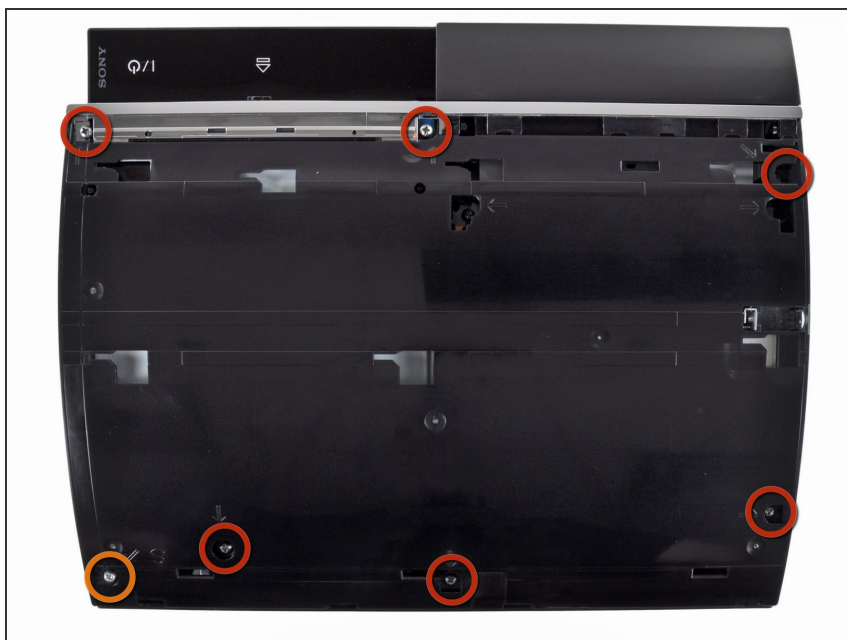
- Pull the smart plate toward the hard drive bay, then lift it off the body of the PS3.

Step 4



 Be sure to keep track of the small metal bracket loosely held in the top cover, if equipped.

Step 5 — Top Cover



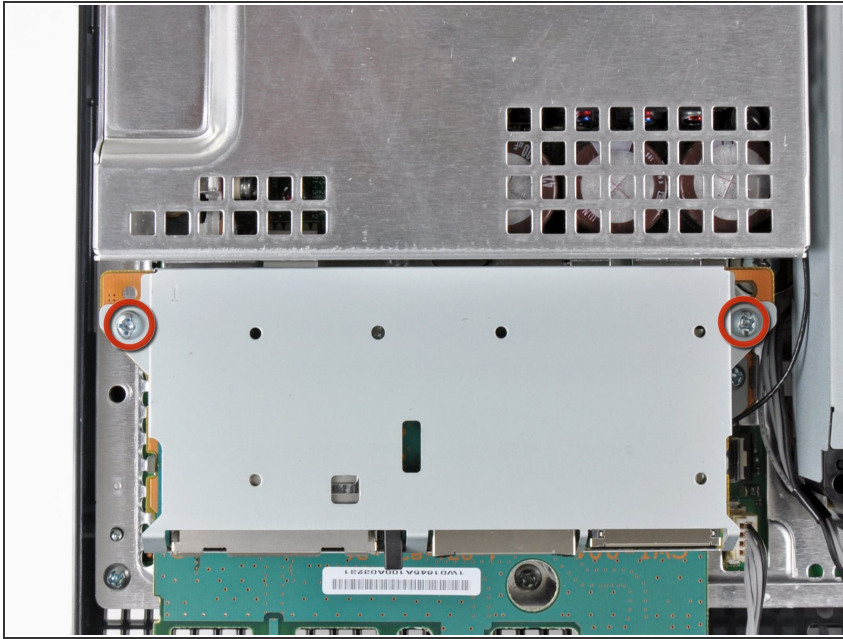
- Remove the following seven screws:
 - Six 52 mm Phillips screws
 - One 30 mm Phillips screw

Step 6



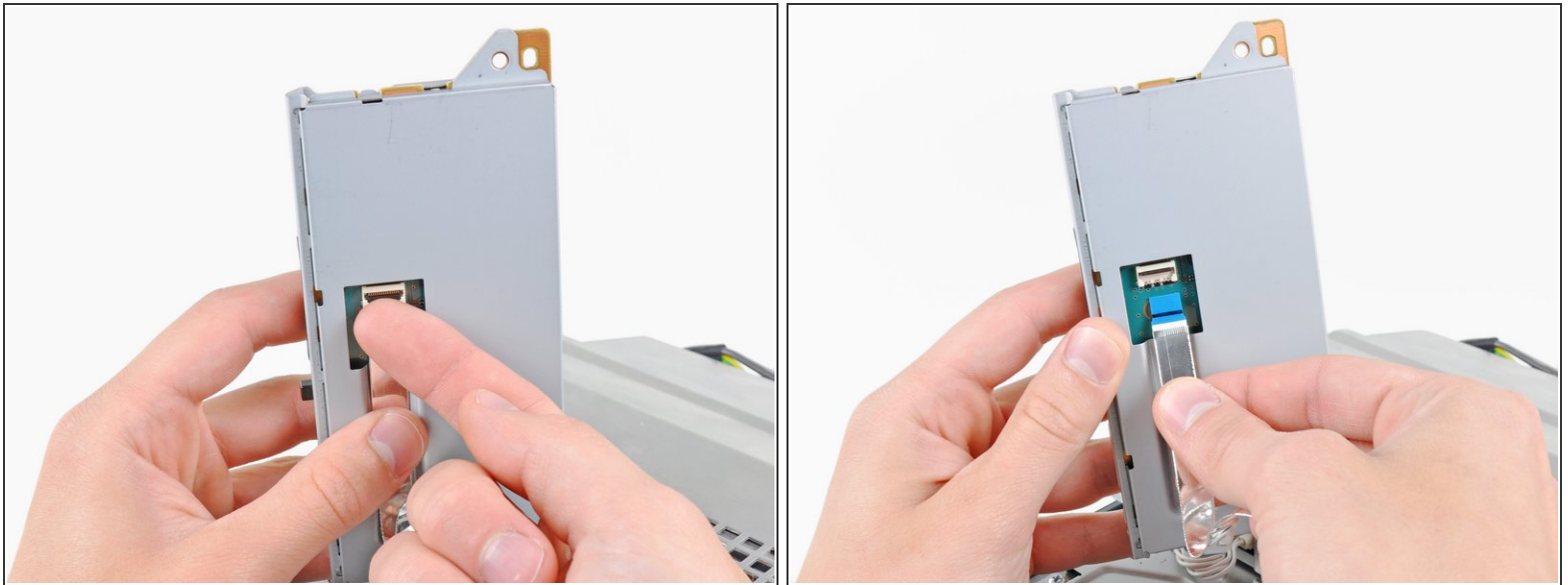
- Lift the top cover from its rear edge and rotate it toward the front of the PS3.
- Remove the top cover.
- There is a plastic hook located in a hole on the top back right hand side corner. Carefully push the plastic hook a bit front the rear of the machine with a spudger to release the rear right of the casing.

Step 7 — Memory Card Reader



- Remove the two 9 mm Phillips screws securing the memory card reader to the chassis.

Step 8

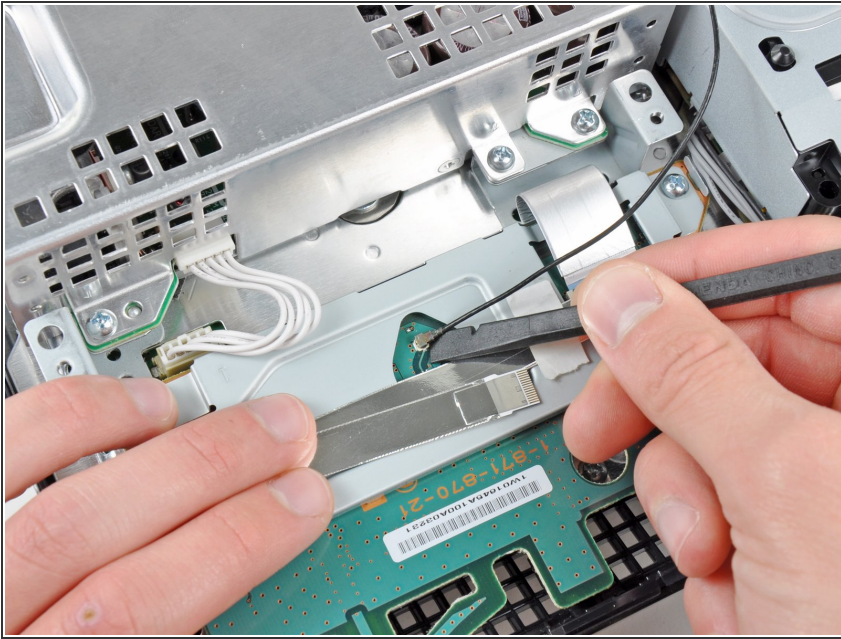


- Lift the memory card reader out of the PS3 enough to access its cable.
- Flip up the retaining flap on the memory card reader ribbon cable socket.

⚠ Be sure you are prying up on the retaining flap, **not** the socket itself.

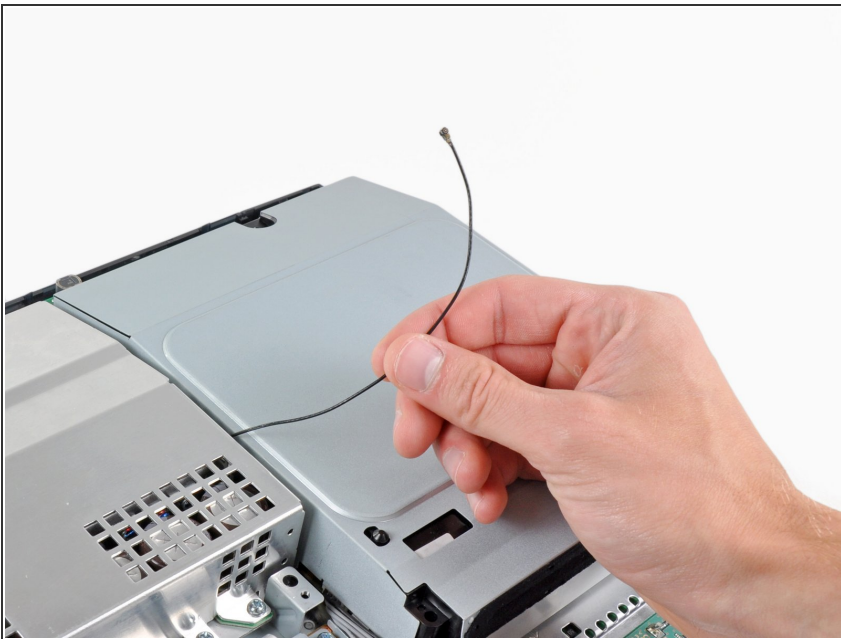
- Pull the ribbon cable out of its socket.
- Remove the memory card reader from the PS3.

Step 9 — Wi-Fi Antenna



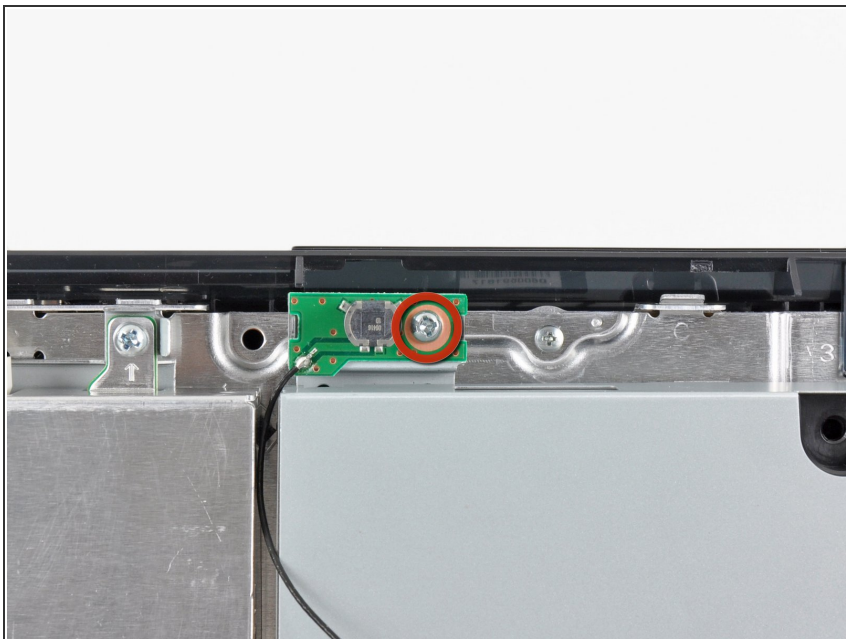
- Use the flat end of a spudger to pry the Wi-Fi antenna connector off its socket on the Wi-Fi/Bluetooth board.

Step 10



- De-route the Wi-Fi antenna cable from the gap between the power supply and the Blu-ray drive.

Step 11



- Remove the 9 mm Phillips screw securing the Wi-Fi antenna to the chassis.

Step 12



- Remove the Wi-Fi antenna, minding its cable that may get caught.

To reassemble your device, follow these instructions in reverse order.