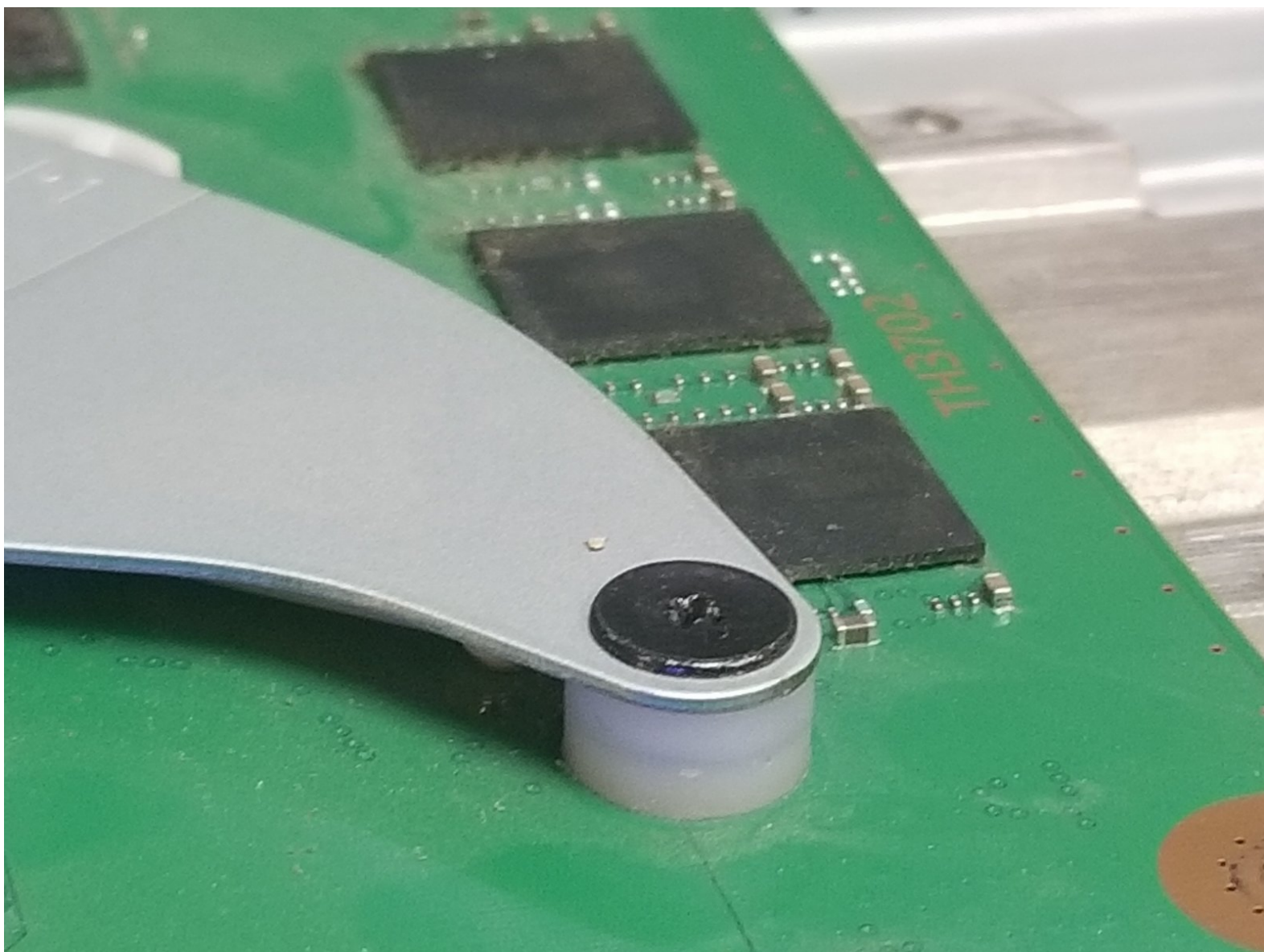




# PlayStation 4 BLOD (gen 1 and gen 2)

Fix the blinking/pulsing blue light of death for playstation 4.

Written By: Kasey Yeagley



## INTRODUCTION

Add washers underneath the APU leafspring to stop the blinking blue light.

For steps on how to get to this stage, please search for a guide to teardown a ps4 gen 1 or 2 depending on which one you have. You only need to take the top off of the gen 1, and for the gen 2 you will need to remove the top plastic as well as the top metal shielding.

The washers used are 1mm outer diameter, about 5/10mm inner diameter, and 2/10mm thickness. Made out of nylon/plastic.

For the gen 1 playstation 4 (the first model with the capacitive touch button) place 1 nylon/plastic washer under the leafspring on each screw and tighten down. Do not overtighten or it will cause the same issue.

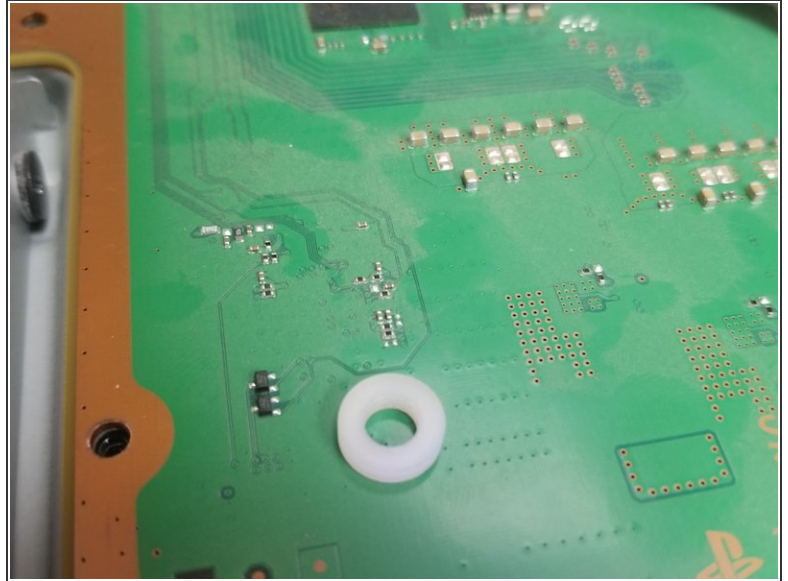
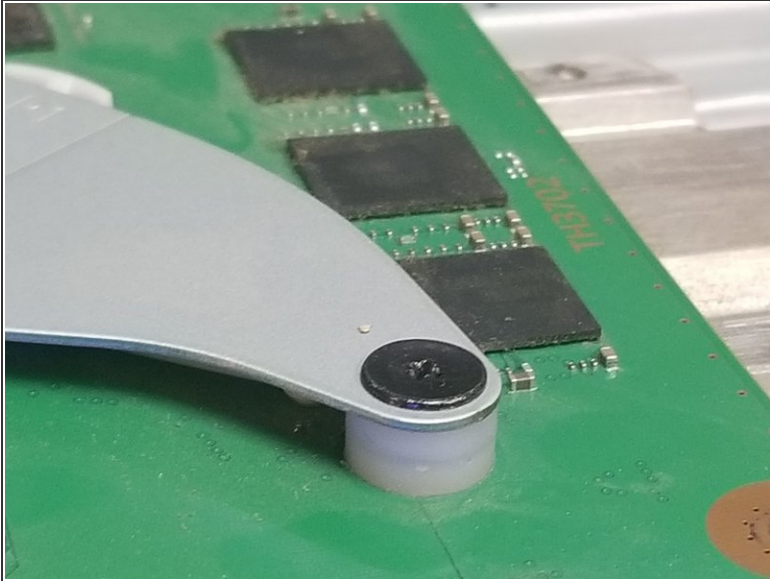
For the gen 2 playstation 4 (second revision with the physical press button for power and eject) place two stacked washers underneath the leafspring on each screw, so not over tighten.



### TOOLS:

- [TR9 Torx Security Screwdriver](#) (1)
  - [Phillips #0 Screwdriver](#) (1)
  - [Phillips #1 Screwdriver](#) (1)
-

## Step 1 — No part replacement



- Place washer underneath leafspring. 2 washers per screw on gen 2 playstation 4, the one pictured above.

To reassemble your device, follow these instructions in reverse order.