



PlayStation 4 Motherboard Replacement

Replacement of the motherboard, including the HDMI port.

Written By: Robert Harvey



INTRODUCTION

If you are having an issue with the motherboard (or any of its ports: HDMI, USB, etc.) and need to replace it, this is the guide for you. Be aware that any replacement or teardown beyond the hard drive voids the Sony warranty

Removing the motherboard separates the original thermal paste between the processor and the heat sink. **Before you reassemble your device**, reapply a new layer of thermal paste. Follow [this guide](#) to learn how.



TOOLS:

- [Phillips #1 Screwdriver](#) (1)
- [TR9 Torx Security Screwdriver](#) (1)
- [Arctic Silver Thermal Paste](#) (1)
- [Arctic Silver ArctiClean](#) (1)



PARTS:

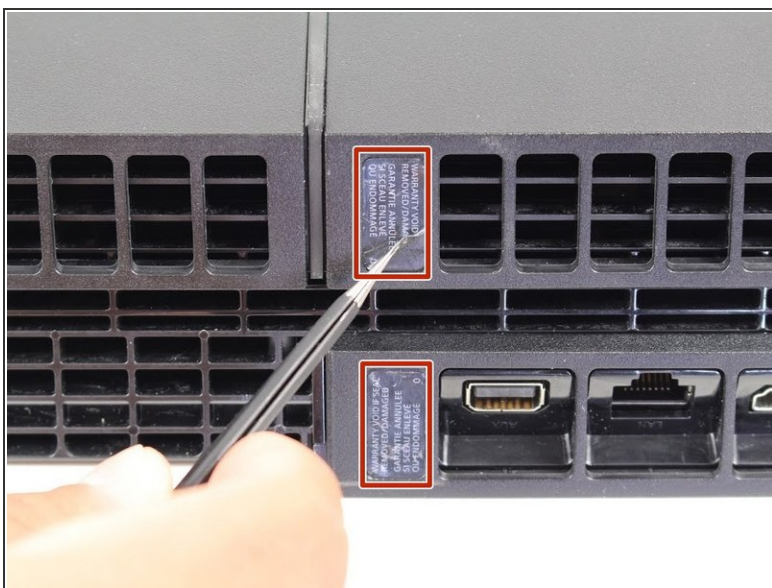
- [PlayStation 4 SAA-001 Motherboard and Paired Optical Drive](#) (1)
- [Playstation 4 SAB-001 Motherboard and Paired Optical Drive](#) (1)
- [PlayStation 4 SAC-001 Motherboard and Paired Optical Drive](#) (1)
- [PlayStation 4 \(CUH-11XXA\) Left Case](#) (1)
- [PlayStation 4 \(CUH-11XXA\) Right Case](#) (1)
- [PlayStation 4 Console Screw Set](#) (1)
- [PlayStation 4 SAB-001 Motherboard Optical Drive Board](#) (1)

Step 1 — Motherboard



- Flip the PS4 upside down on its top.

Step 2



- Remove the four stickers from the back of the PS4.

⚠ Removing any of these stickers voids your warranty with Sony.

Step 3



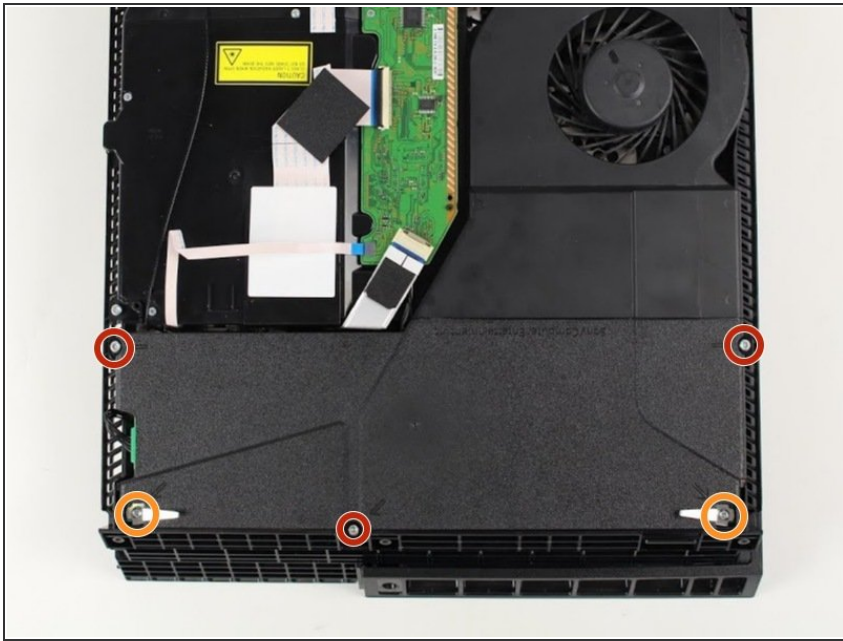
- Remove the four 9mm TR9 Security Torx screws from the back of the PS4.

Step 4



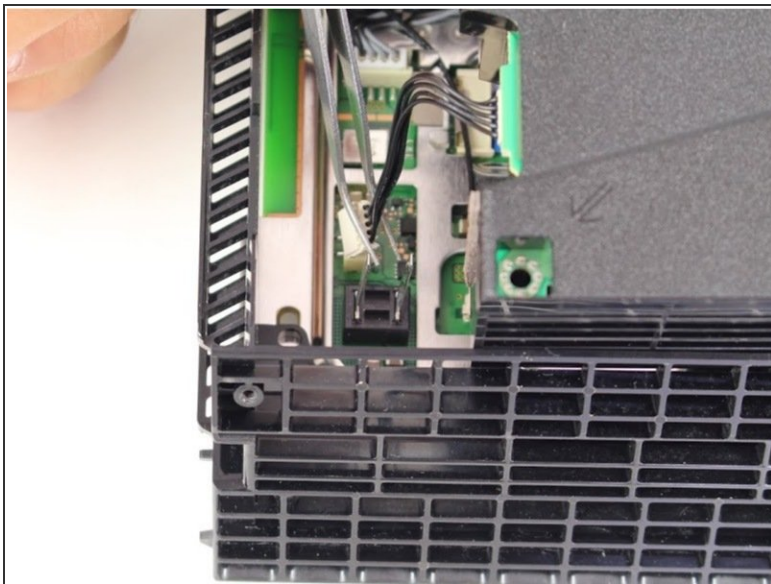
- With the device upside down, lift up on the back side of the device to remove the bottom cover.

Step 5



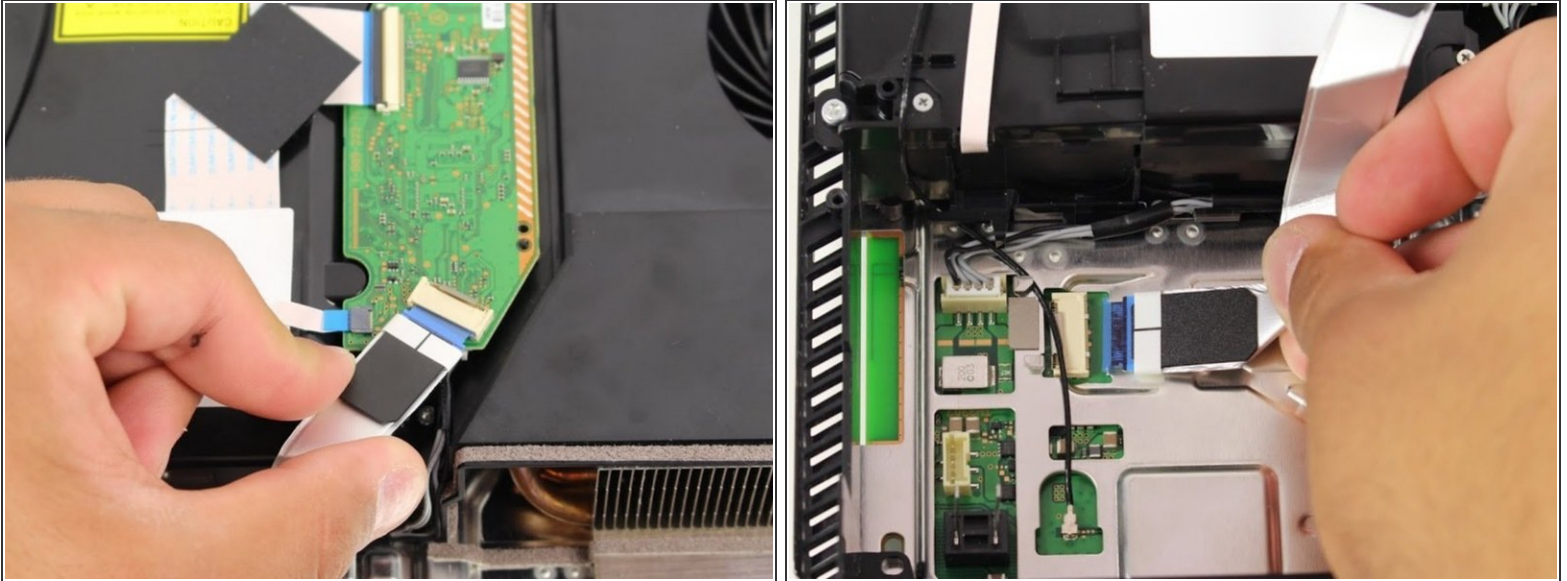
- Remove the three 9mm TR9 Security Torx screws on the power supply.
- Remove the two 4mm Phillips #1 screws.

Step 6



- Disconnect the power supply connector from the power supply.
- Lift the power supply unit to remove it from the case.

Step 7



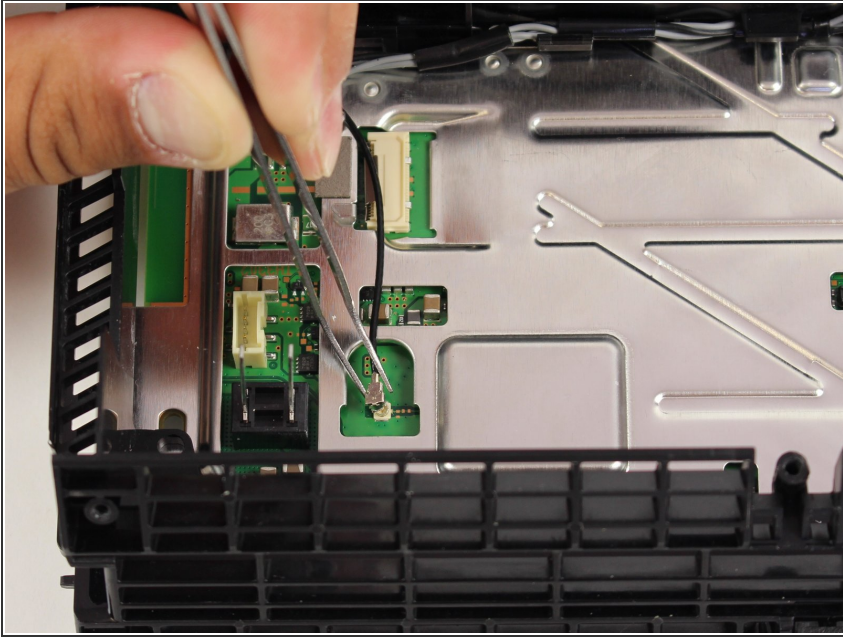
- Disconnect the ribbon wire from the optical drive by pressing down on the metal release tab and gently pulling the ribbon wire. This should not require force.
- Disconnect the same ribbon wire from the motherboard; making sure you're pressing down on the metal release tab and gently pulling the ribbon wire.

Step 8



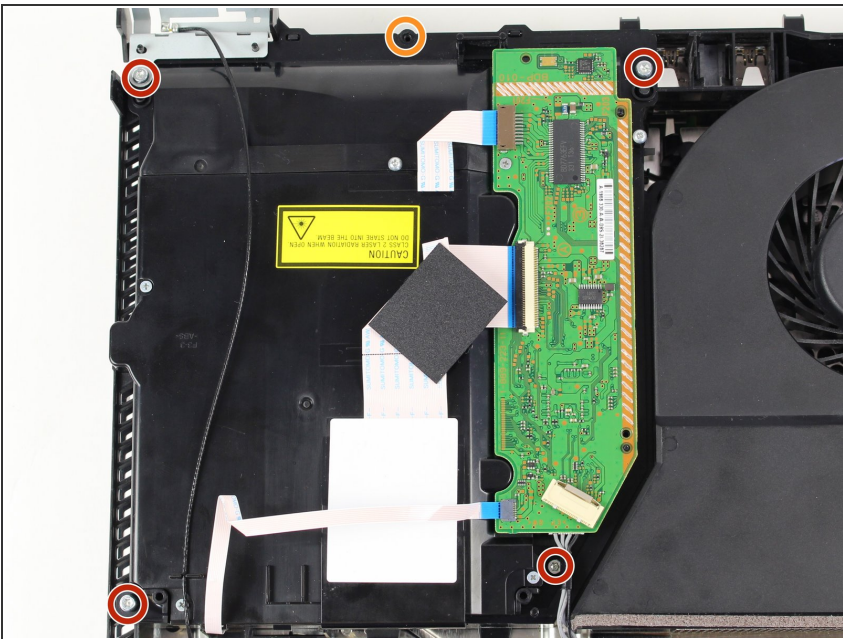
- Unplug the optical drive cord from the motherboard.

Step 9



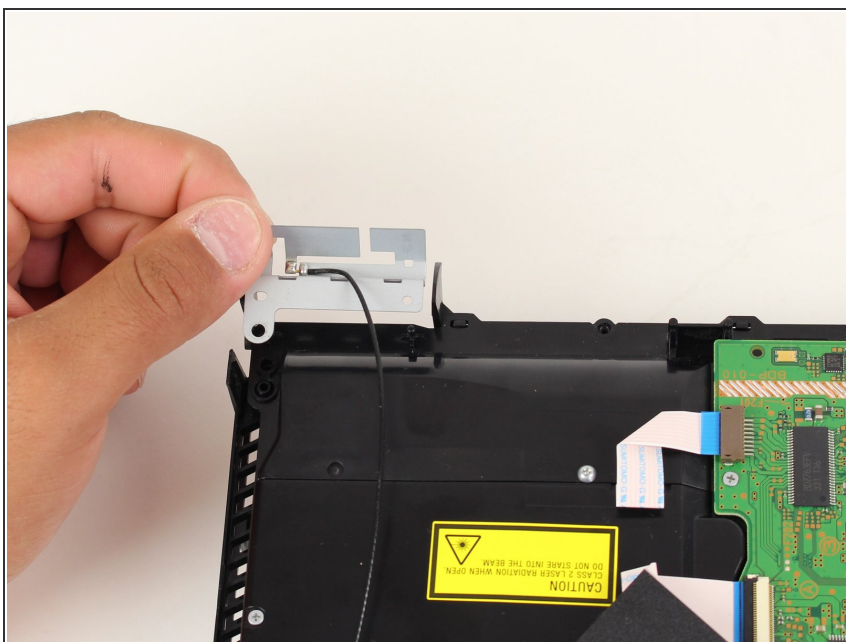
- Remove the wifi cord from the motherboard.

Step 10



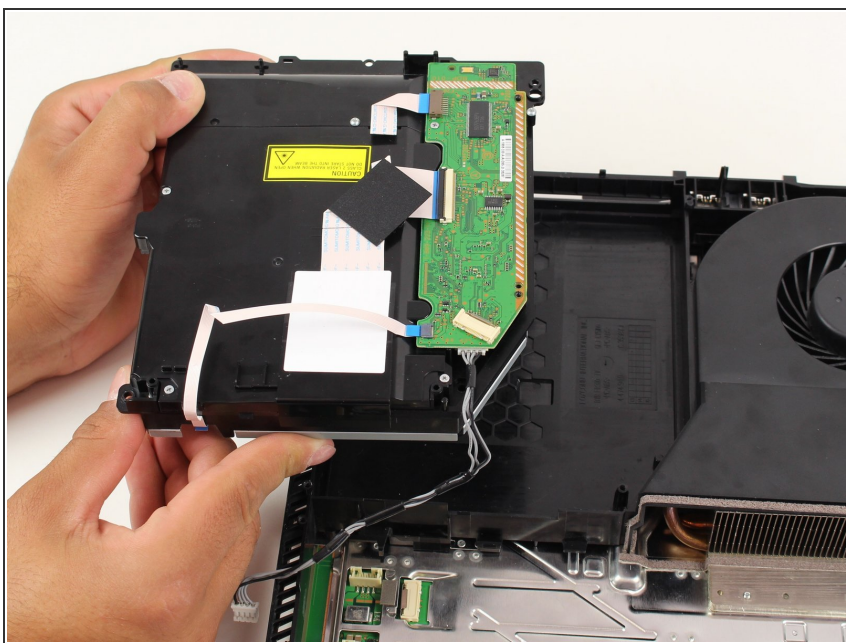
- Remove the four 9mm TR9 Security Torx screws.
- Remove the 5mm Phillips #1 screw.

Step 11



- Remove the wifi antenna.

Step 12



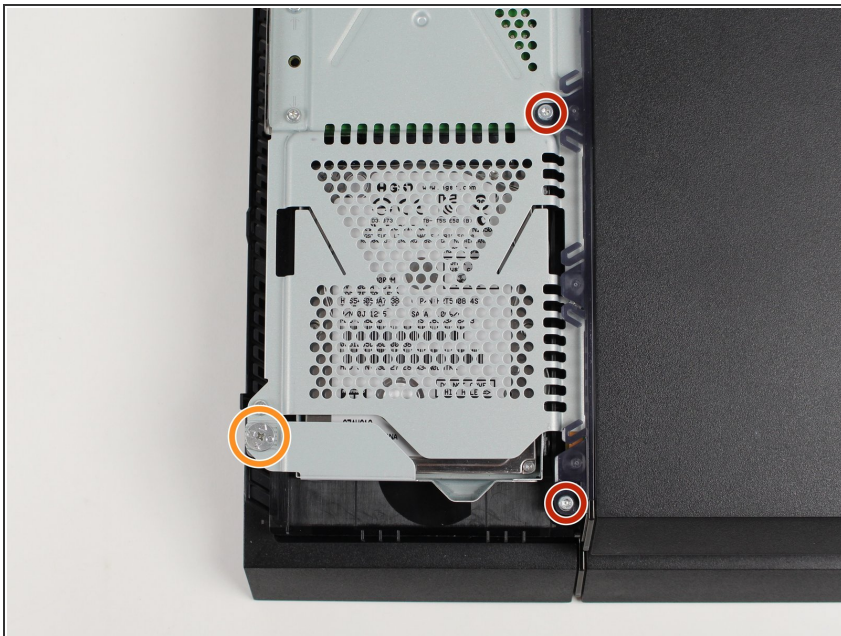
- Lift the optical drive up and remove it from the system.

Step 13



- Flip the system over and remove the left top panel by pressing it back and lifting up.

Step 14



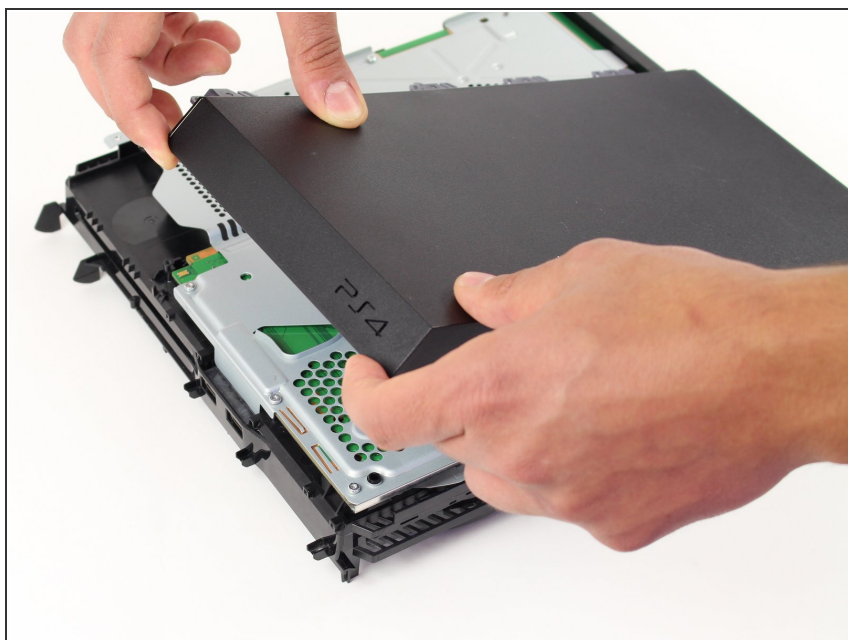
- Remove the two 9mm TR9 Security Torx screws.
- Remove the 5mm Phillips #1 screw.

Step 15



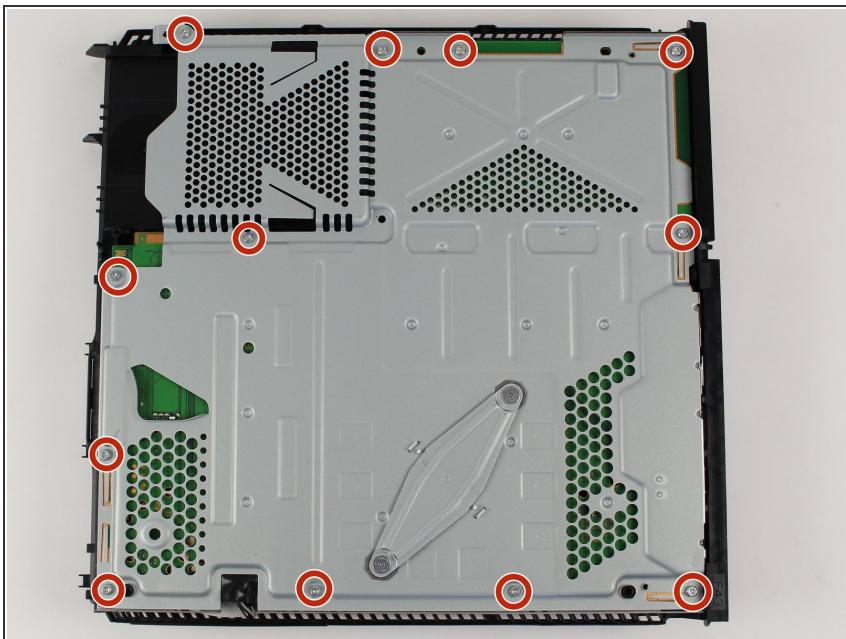
- Pull out and remove the hard drive from the system.

Step 16



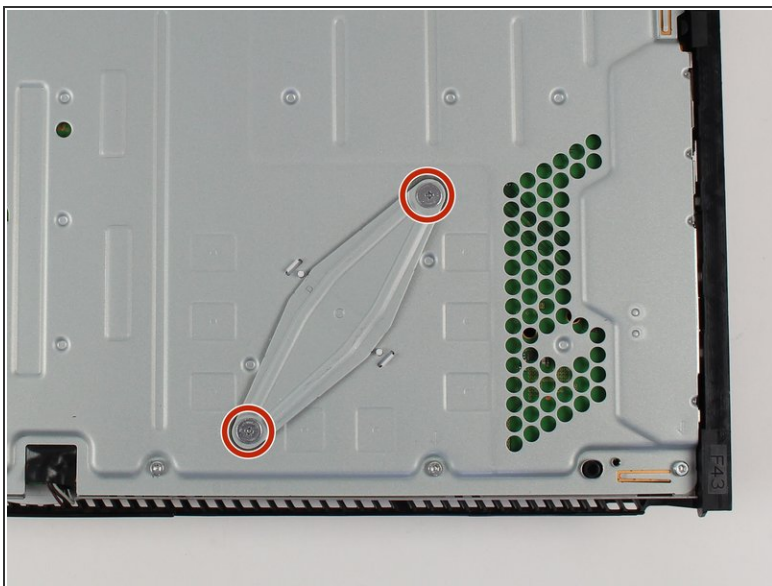
- Lift up on the front of the top cover and slide backwards.

Step 17



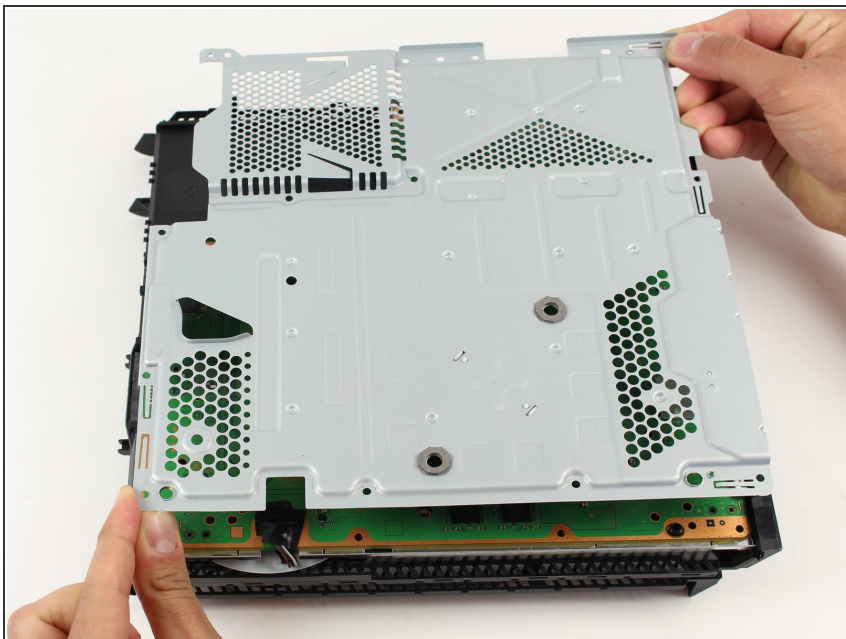
- Remove the twelve 9mm TR9 Security Torx screws.

Step 18



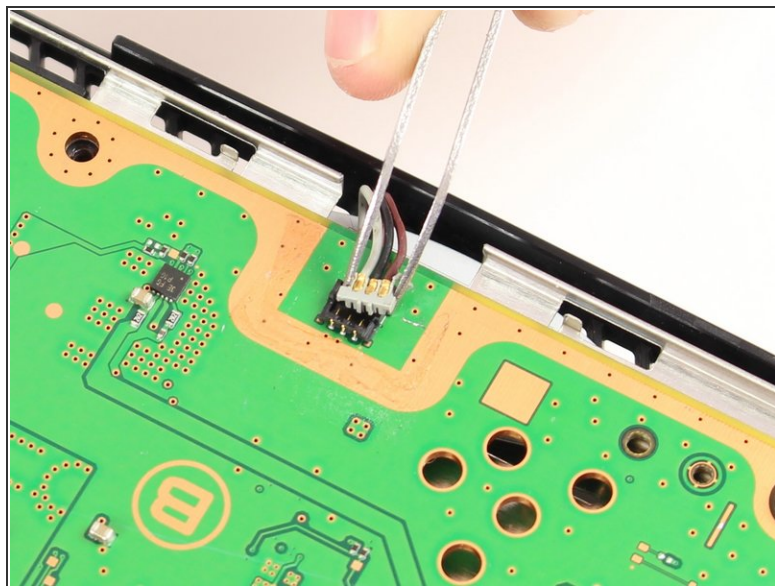
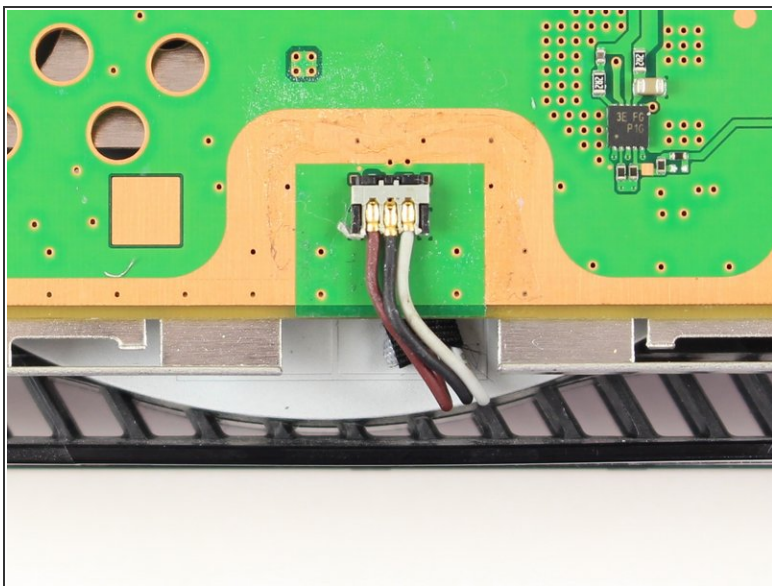
- Remove the two 9mm Phillips head #1 screws.
- Remove the metal support bracket.

Step 19



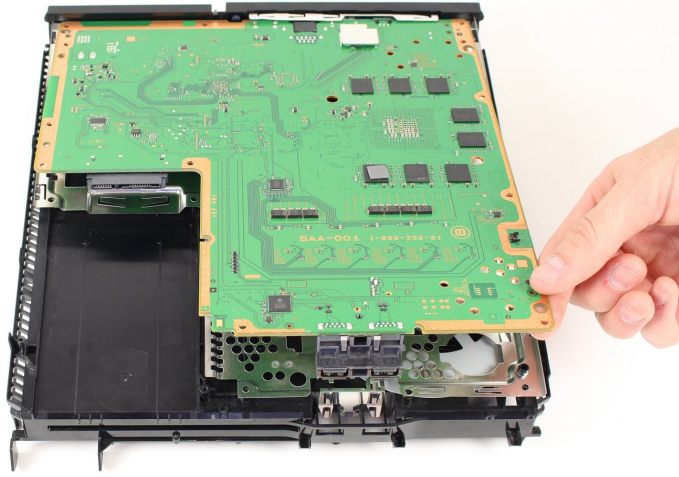
- Lift up and remove the metal covering.

Step 20



- Disconnect the three wire plug from the motherboard by gently prying upwards and away from the motherboard.

Step 21



- Lift up and remove the motherboard from the system.

⚠ Removing the motherboard separates the original thermal paste between the processor and the heat sink. **Before you reassemble your device**, reapply a new layer of thermal paste. Follow [this guide](#) to learn how.

To reassemble your device, follow these instructions in reverse order.