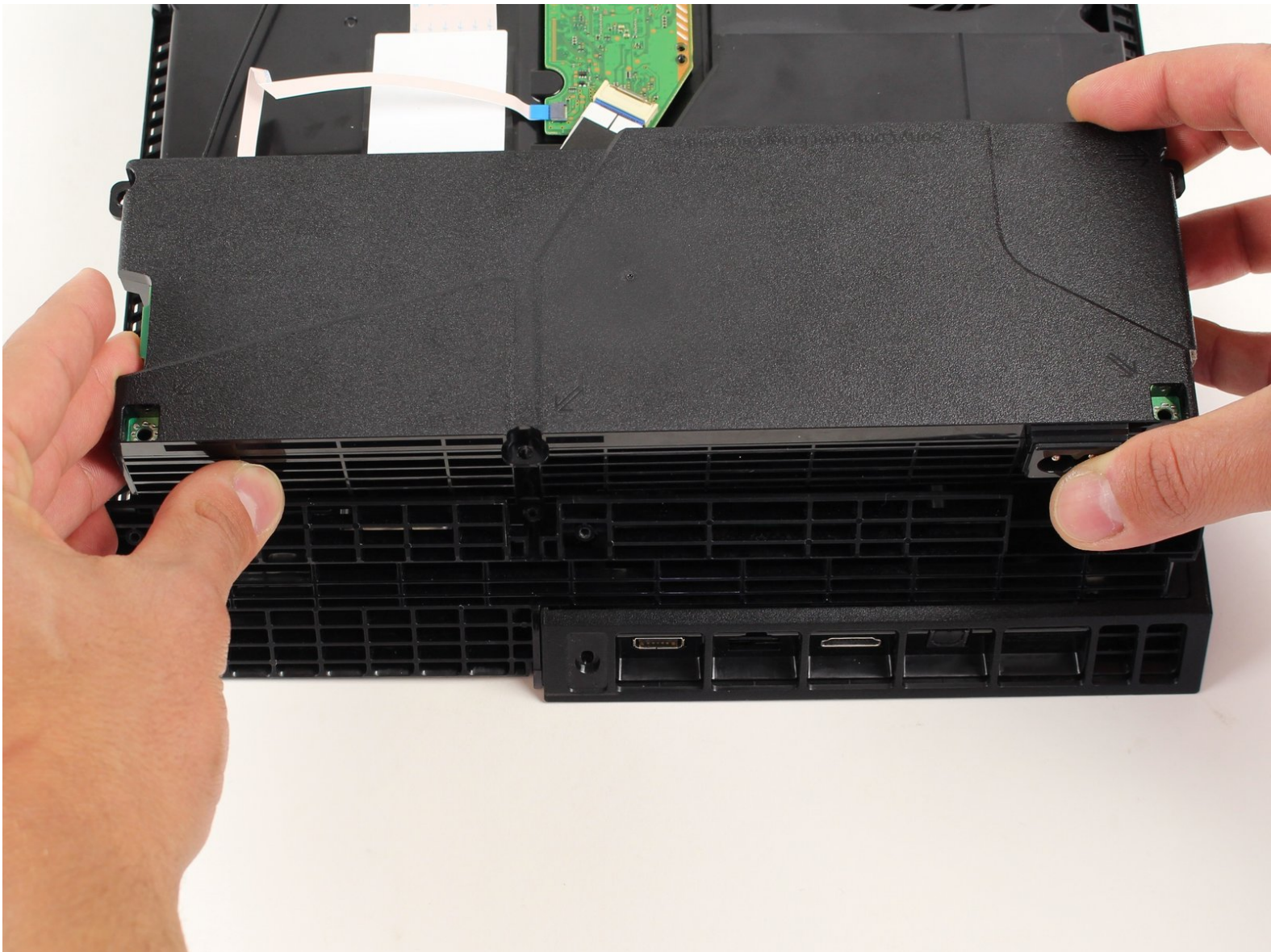




# PlayStation 4 Power Supply Replacement

Replacement of Power Supply

Written By: Robert Harvey



## INTRODUCTION

Use this guide to replace the power supply of Sony's first generation PS4. Be aware that any replacement or teardown beyond the hard drive voids the Sony warranty.



### TOOLS:

- [Phillips #1 Screwdriver](#) (1)
- [TR9 Torx Security Screwdriver](#) (1)
- [Tweezers](#) (1)



### PARTS:

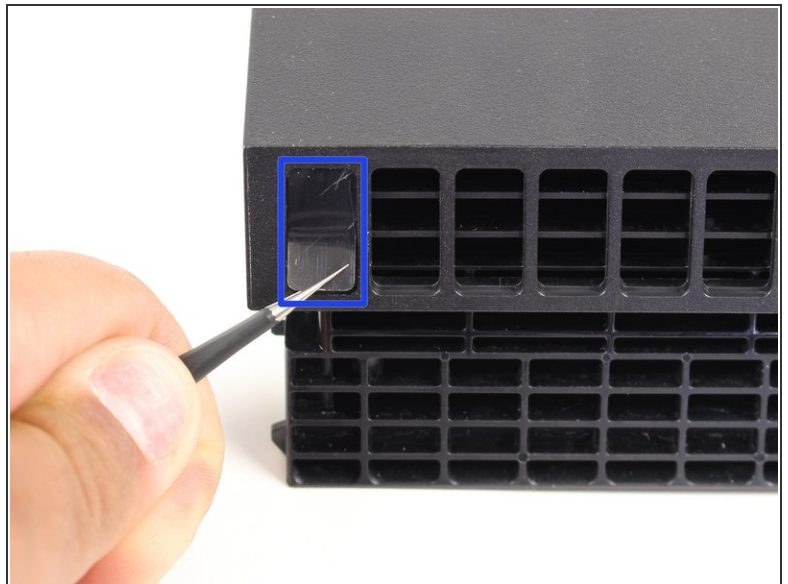
- [PlayStation 4 ADP-240CR Power Supply](#) (1)
- [PlayStation 4 ADP-240AR Power Supply](#) (1)
- [PlayStation 4 ADP-200ER Power Supply](#) (1)
- [PlayStation 4 Console Screw Set](#) (1)

## Step 1 — Power Supply



- Flip the PS4 over on its top.

## Step 2



- Remove the four stickers on the back of the PS4.

⚠ Despite the scary-sounding warning on the sticker, [Sony cannot legally void your warranty for removing it](#)—only if you damage your device.



### Step 3



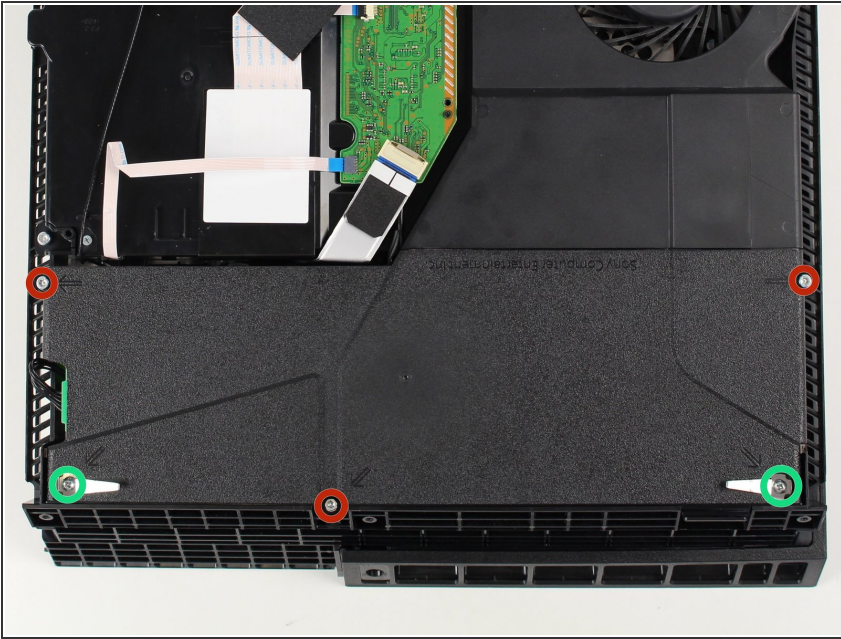
- Remove the three 9mm TR8 Torx Security screws on the back of the system.

### Step 4



- Remove the bottom panel by lifting the front piece up and sliding the panel towards the back.

## Step 5



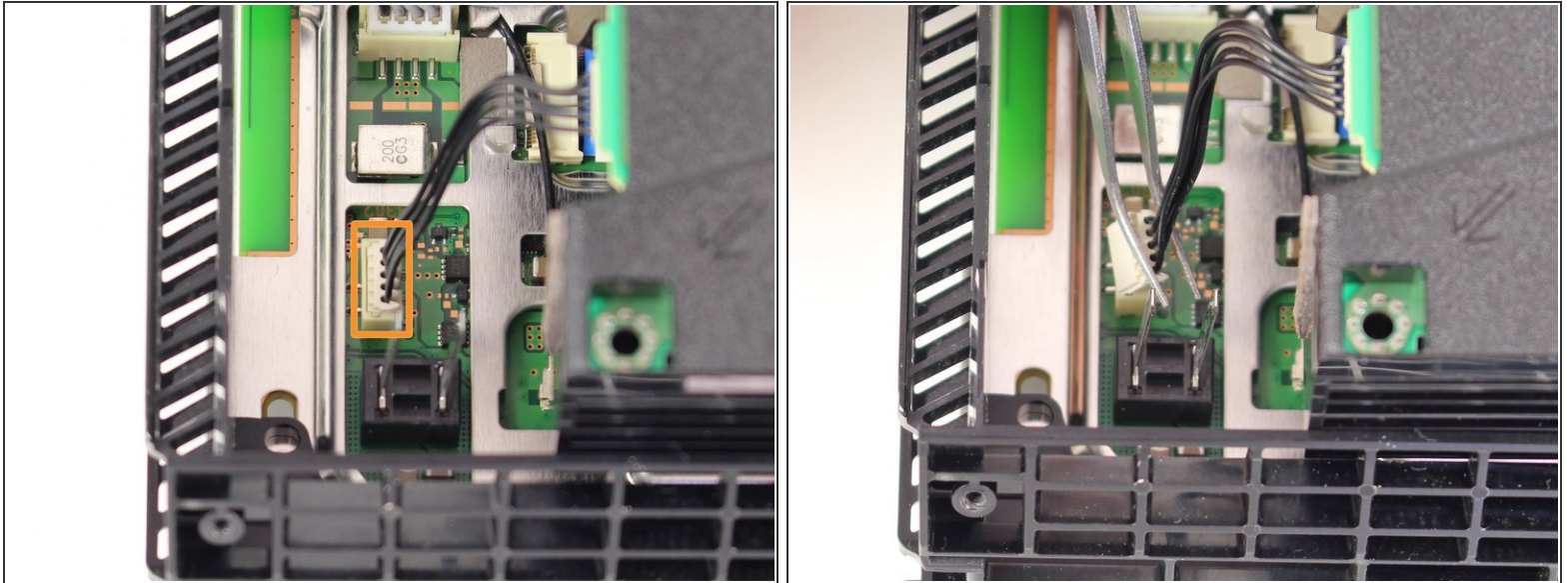
- Remove the three 9mm TR9 Torx screws.
- Remove the two 4cm Phillips head #1 screws.

## Step 6



- Lift straight up on the power supply.

## Step 7



- Remove the 5 wire plug that is attached from the power supply to the motherboard.
- You can now fully remove the power supply from the system.

To reassemble your device, follow these instructions in reverse order.