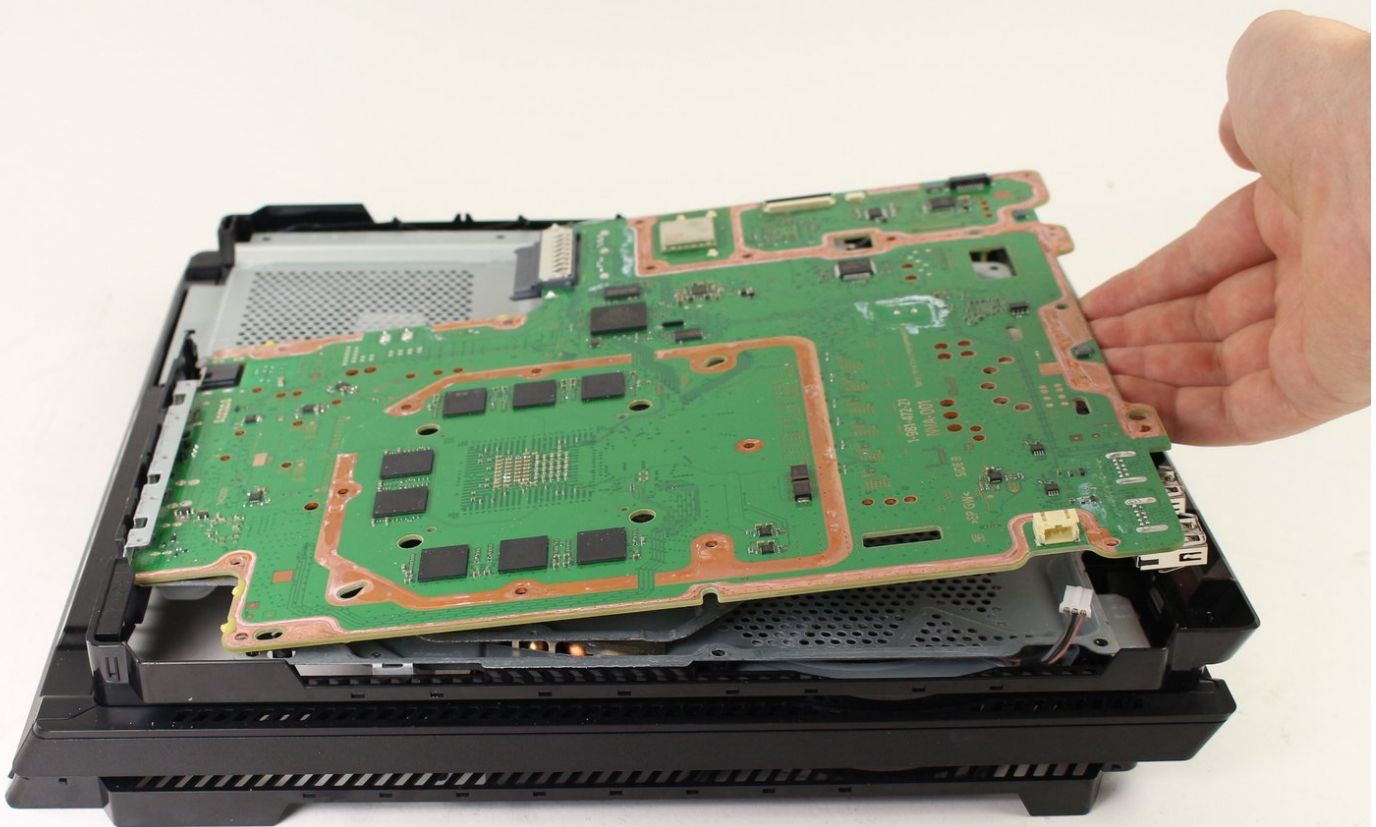




# PlayStation 4 Pro Motherboard Replacement

This guide will show you how to replace your motherboard in your Playstation 4 Pro.

Written By: Thomas



## INTRODUCTION

This guide will show the steps needed to remove the motherboard in the PlayStation 4 Pro. The motherboard has many small components that are rather delicate, careful handling is necessary. This guide has warranty-voiding disassembly.



### TOOLS:

- [Phillips #0 Screwdriver](#) (1)
- [T8 Torx Security Bit Screwdriver](#) (1)
- [Phillips #1 Screwdriver](#) (1)
- [iFixit Opening Tools](#) (1)



### PARTS:

- [PlayStation 4 Pro Motherboard](#) (1)
- [PlayStation 4 Pro Screw Set](#) (1)

## Step 1 — Hard Drive Caddy



- Flip the console upside down.
- Use your finger to pull and snap off the plastic cover over the hard drive.

## Step 2



- Use a Phillips #0 Screwdriver to remove the single screw securing the hard drive caddy.
- Pull the hard drive caddy straight out.

### Step 3 — Power Supply Assembly



- Flip the console right side up.
- Grip the two corners located at the front of the device.
- Pull upwards until a loud click is heard.
- ⓘ This may require a lot of force, so do not be afraid to get a little rough with your console.
- After both corners detach, slide the cover backwards and lift off.

### Step 4



- Use a T8 Torx Security screwdriver to remove five screws from the rear of the device.
  - Two 31mm screws.
  - Three 10mm screws.
- Remove the metal plate by pulling it up.



## Step 5



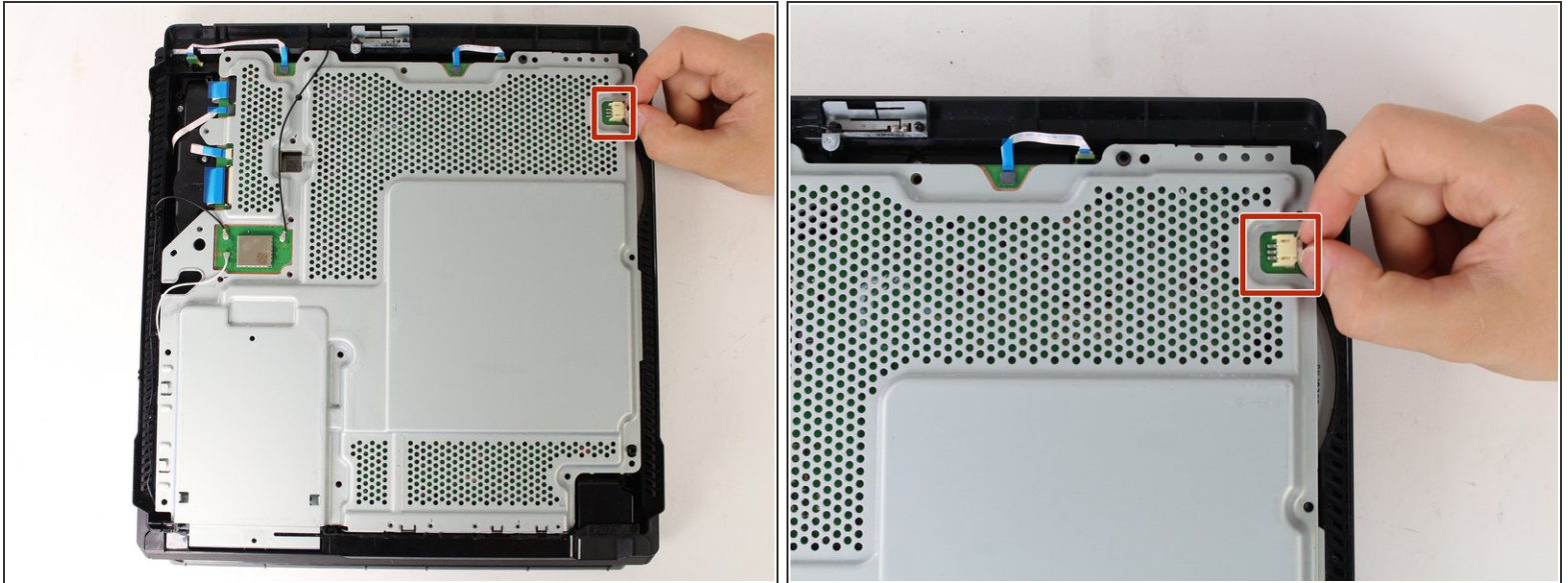
- Flip the console over so the bottom is facing up.
- Use a T8 Torx Security screwdriver to remove the three black 7mm screws in the back panel.
- Remove the bottom cover in the same way as the top cover. Grip the cover on both sides and pull up until it clicks. Then slide the cover off.

## Step 6



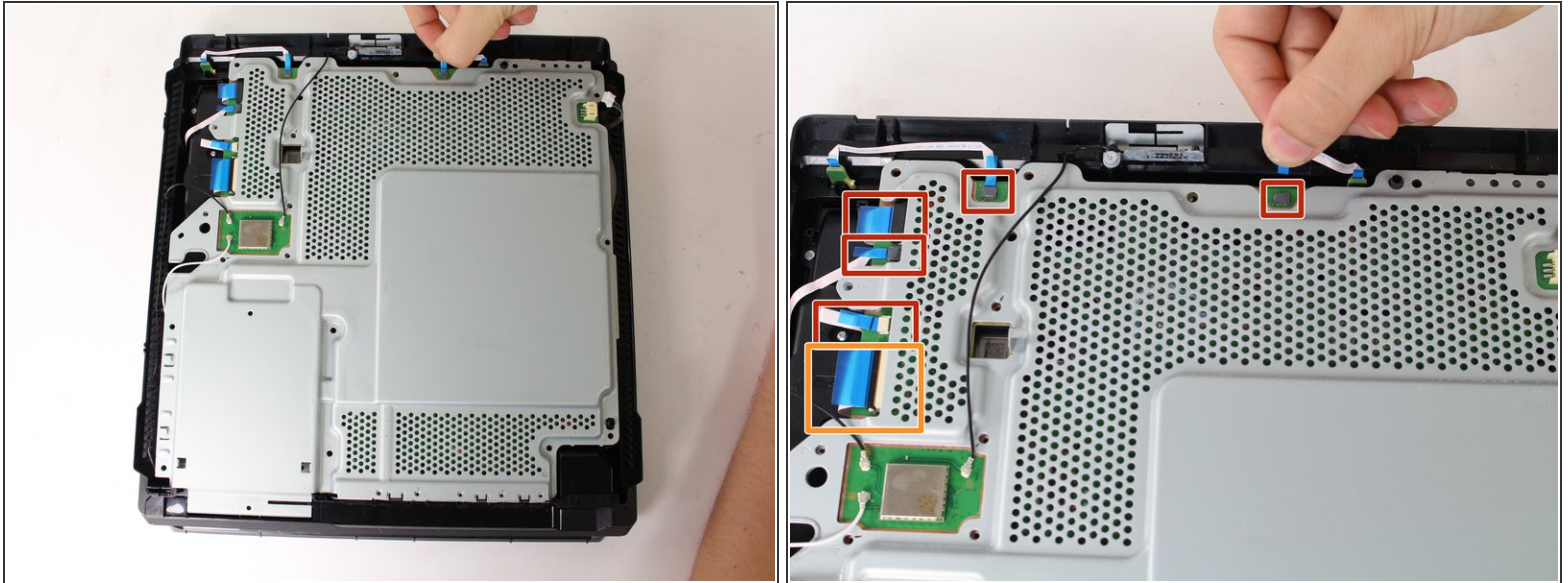
- Use a T8 Torx security screwdriver to remove the eleven 10mm silver screws from the metal plate.
- Use a Phillips #1 screwdriver to remove the eleven 4mm black screws from the metal plate.
- Use a spudger to disconnect the three antenna cables (two black and one white) by prying them straight up from their sockets.

## Step 7



- Pull the white fan connector straight out of the yellow mount on the motherboard.

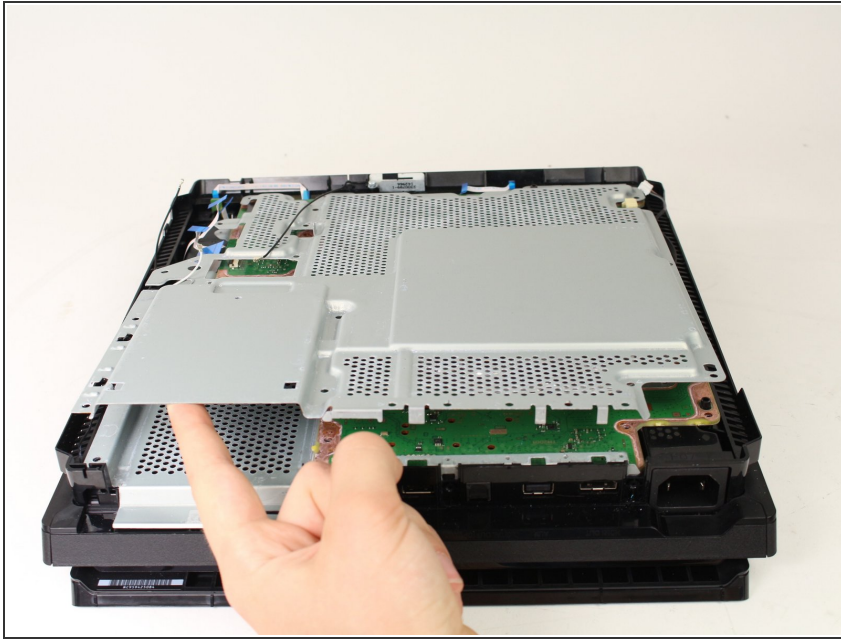
## Step 8



- Pull out the five small, blue low profile cables connected to the metal plate.
  - Lift the retaining flap on the ZIF connector of the large ribbon cable.
  - Pull the large ribbon cable from its socket.
- ⚠ Do not pull on the biggest blue cable without lifting the tab first. Doing so can damage the connection.

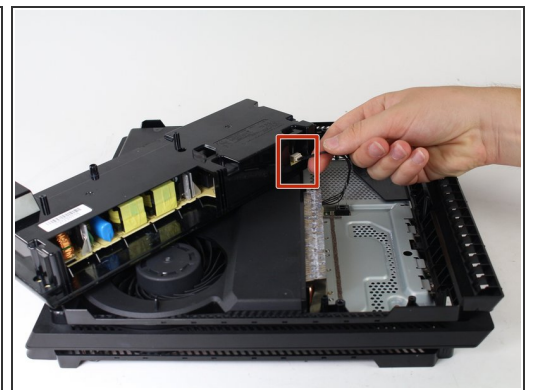
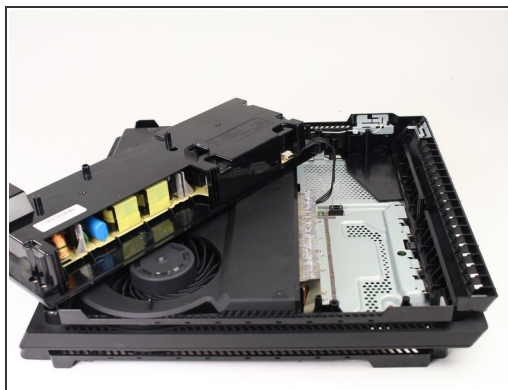


## Step 9



- Pull up and remove the metal plate.

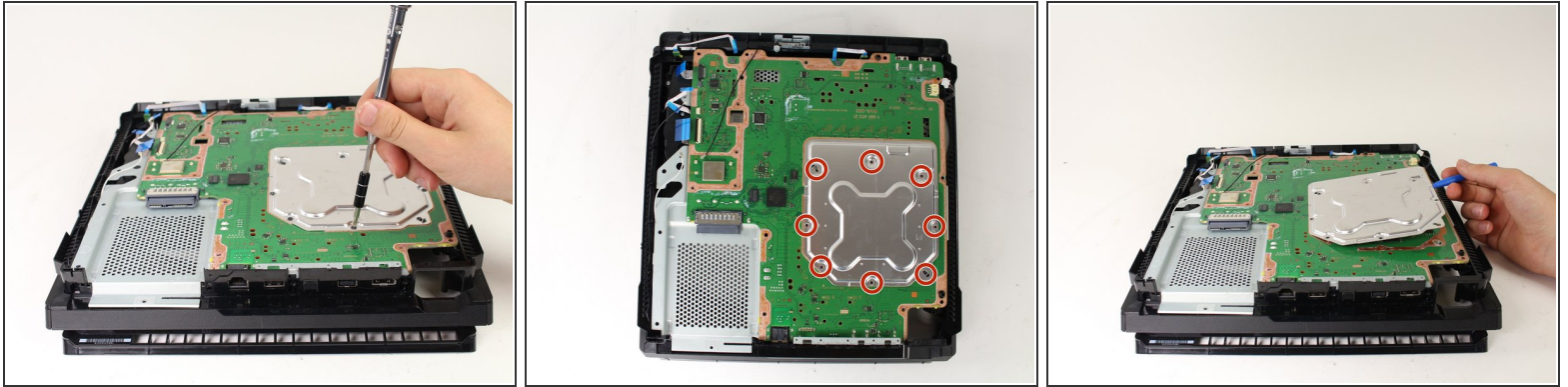
## Step 10



- Flip the console over to continue working on the top side.
- Pull up on the power supply unit and set it on the console.
- ⚠ Be careful not to pull too far, the assembly is still connected at one point.
- Grip the connector behind the power supply and pull straight out.



## Step 11 — Motherboard



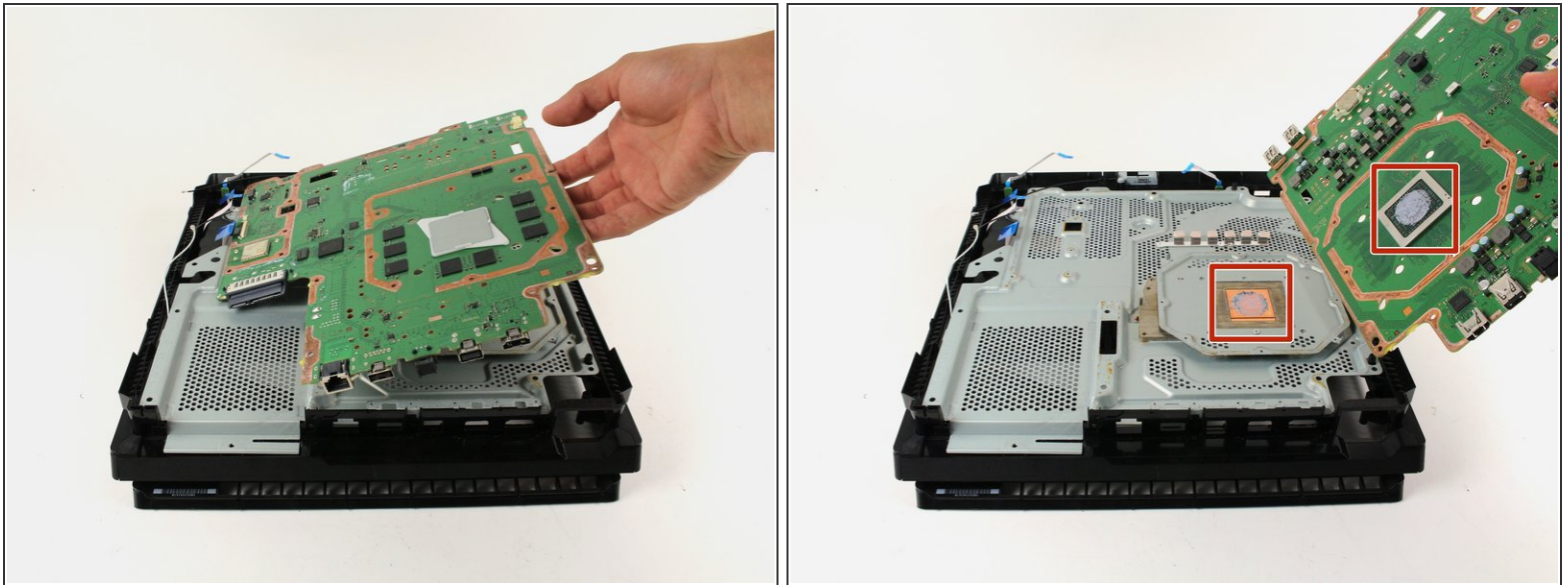
- Carefully flip the console over so the bottom is facing up.
- Use a Phillips #1 screwdriver to remove the eight 4mm screws on the metal plate with the X-like symbol.
- Use a plastic opening tool to remove the metal plate with the X-like shape.

## Step 12



- Use a Phillips #1 screwdriver to remove the four 13mm screws on the X-shaped metal plate underneath.
- Grip the X-shaped retaining bracket and lift straight up.

## Step 13



- Grip the edge of the motherboard and slowly lift upwards to remove it from the device.
- ☑ For reassembly, use [this guide](#) to reapply thermal paste between the motherboard and the metal plate underneath.

To reassemble your device, follow these instructions in reverse order.