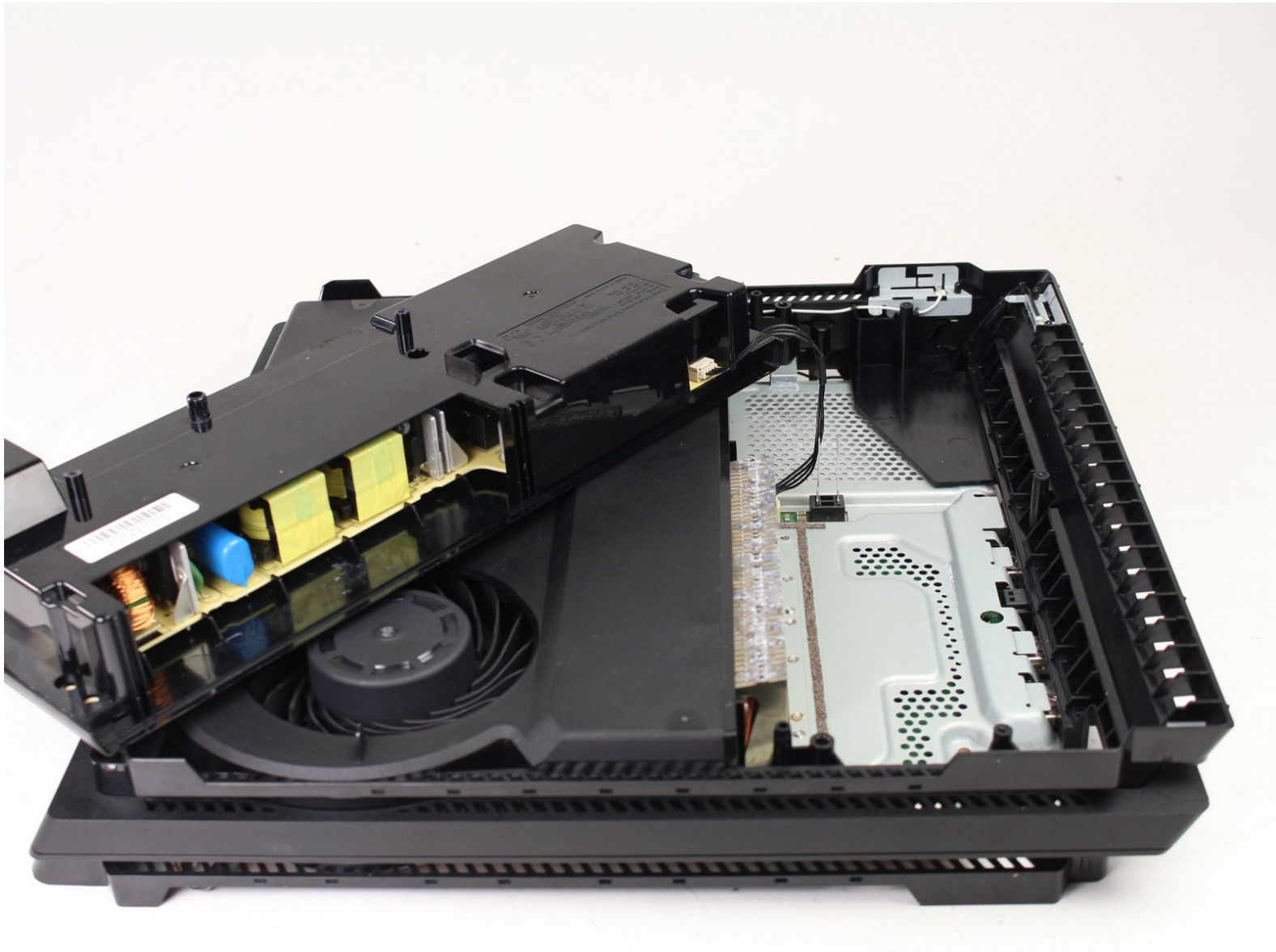




# PlayStation 4 Pro Power Supply Unit Replacement

This guide will show you how to remove the power supply unit from your Playstation 4 Pro.

Written By: Ashlyn Chow



## INTRODUCTION

This guide will go through the steps necessary to remove the power supply unit from the PlayStation 4 Pro. Some disassembly is required for this removal, but it is one of the first things that can be removed from the PS4 Pro.



### TOOLS:

- [Phillips #0 Screwdriver](#) (1)
- [T8 Torx Security Bit Screwdriver](#) (1)
- [Phillips #1 Screwdriver](#) (1)



### PARTS:

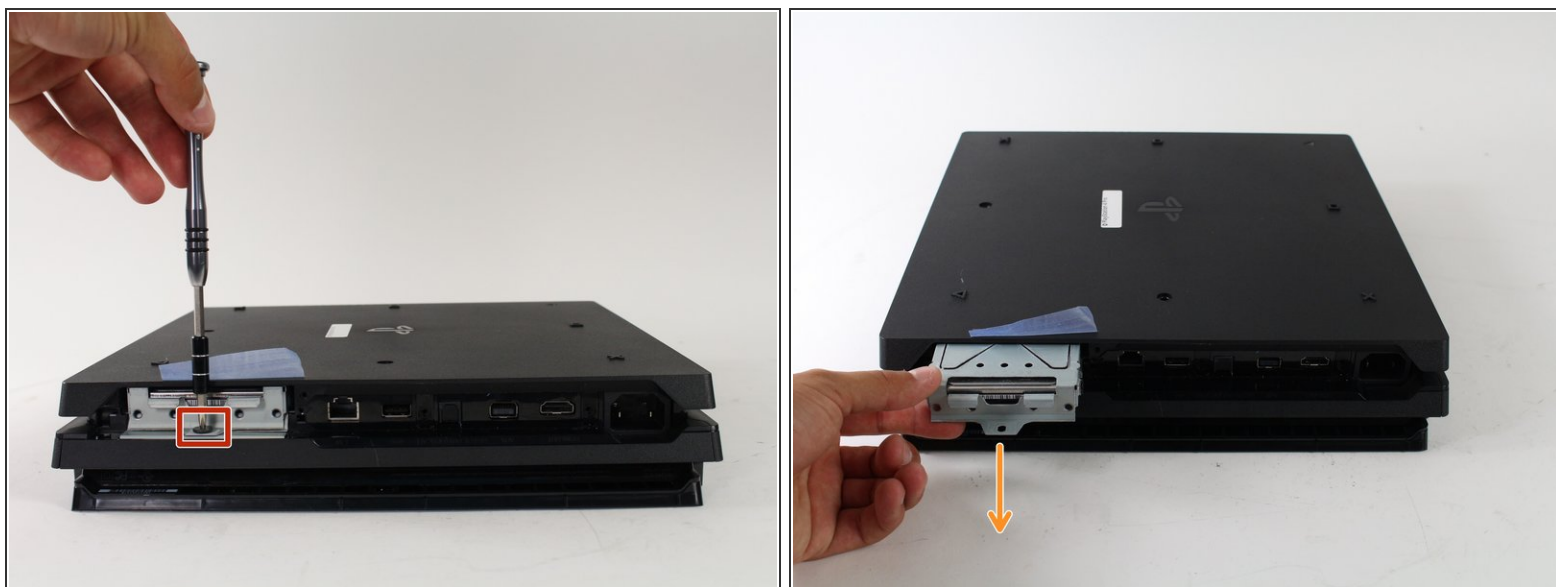
- [PlayStation 4 Pro ADP-300CR Power Supply](#) (1)
- [PlayStation 4 Pro ADP-300FR Power Supply](#) (1)

## Step 1 — Power Supply Unit



- Begin by flipping the console upside down.
- Use your finger to pull and snap off the plastic cover over the hard drive.

## Step 2



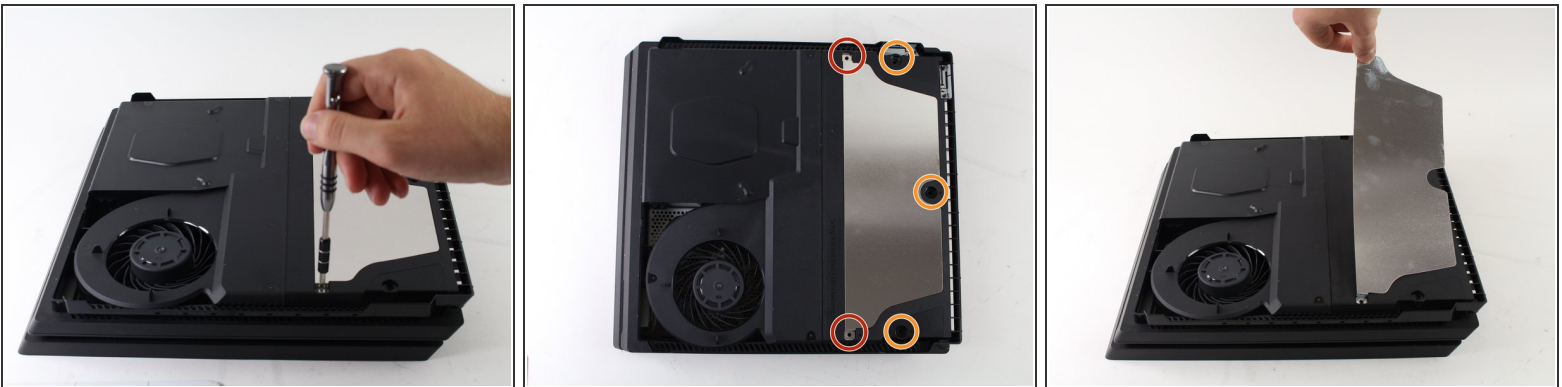
- Use a screwdriver to remove the single Phillips #0 screw securing the hard drive caddy.
- Pull the hard drive caddy straight out.

### Step 3



- Flip the console right side up.
- Grip the two corners located at the front of the device.
- Pull upwards until a loud click is heard.
- ⓘ This may require a lot of force, so do not be afraid to get a little rough with your console.
- After both corners detach, slide the cover backwards and lift off.

### Step 4



- Use a T8 Torx Security screwdriver to remove the five screws.
  - Two 31mm screws.
  - Three 10mm screws.
- Remove the metal plate.

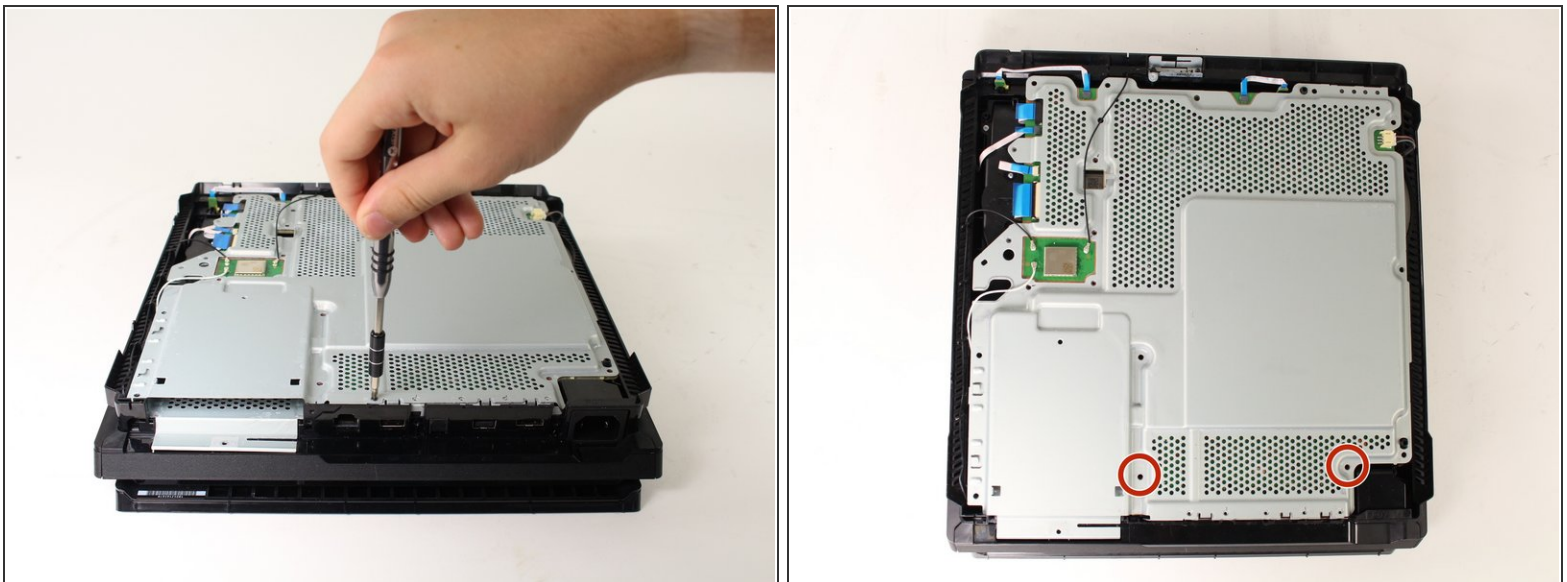


## Step 5



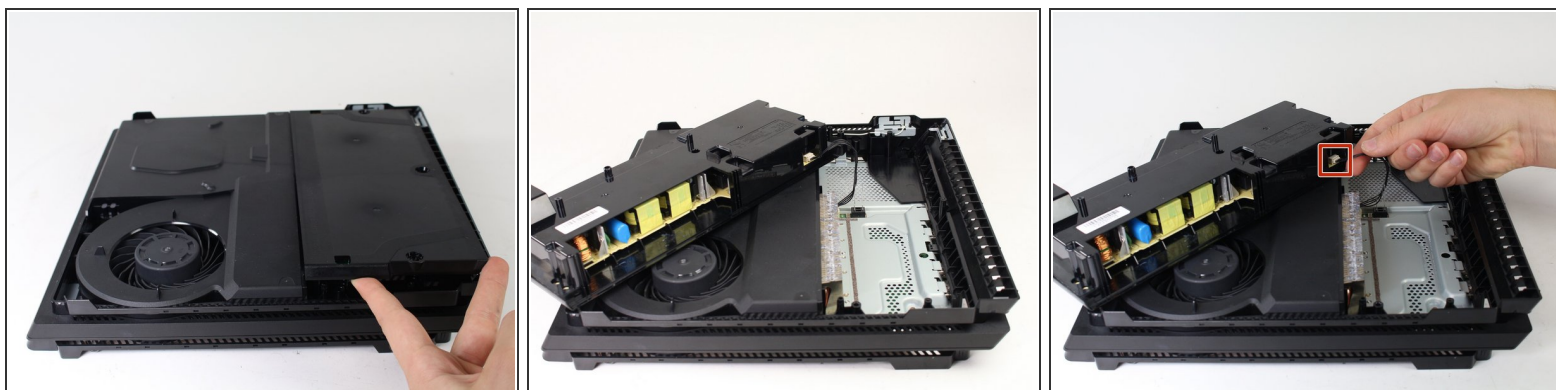
- Flip the console to its back once again.
- Use a T8 Torx Security screwdriver to remove the three black 7mm screws in the back panel.
- Remove the bottom cover in the same way as the top cover. Grip on both sides, pull up until a click is heard and slide off.

## Step 6



- Use a T8 Torx security screwdriver to remove the two 10mm silver screws from the metal plate.

## Step 7



- Flip the console over to continue working on the top side.
- Place fingers underneath edge of power supply unit on both sides and pull straight up.
- ⓘ Be careful not to pull too far, the assembly is still connected at one point.
- Grip the connector behind the power supply and pull straight out.

To reassemble your device, follow these instructions in reverse order.