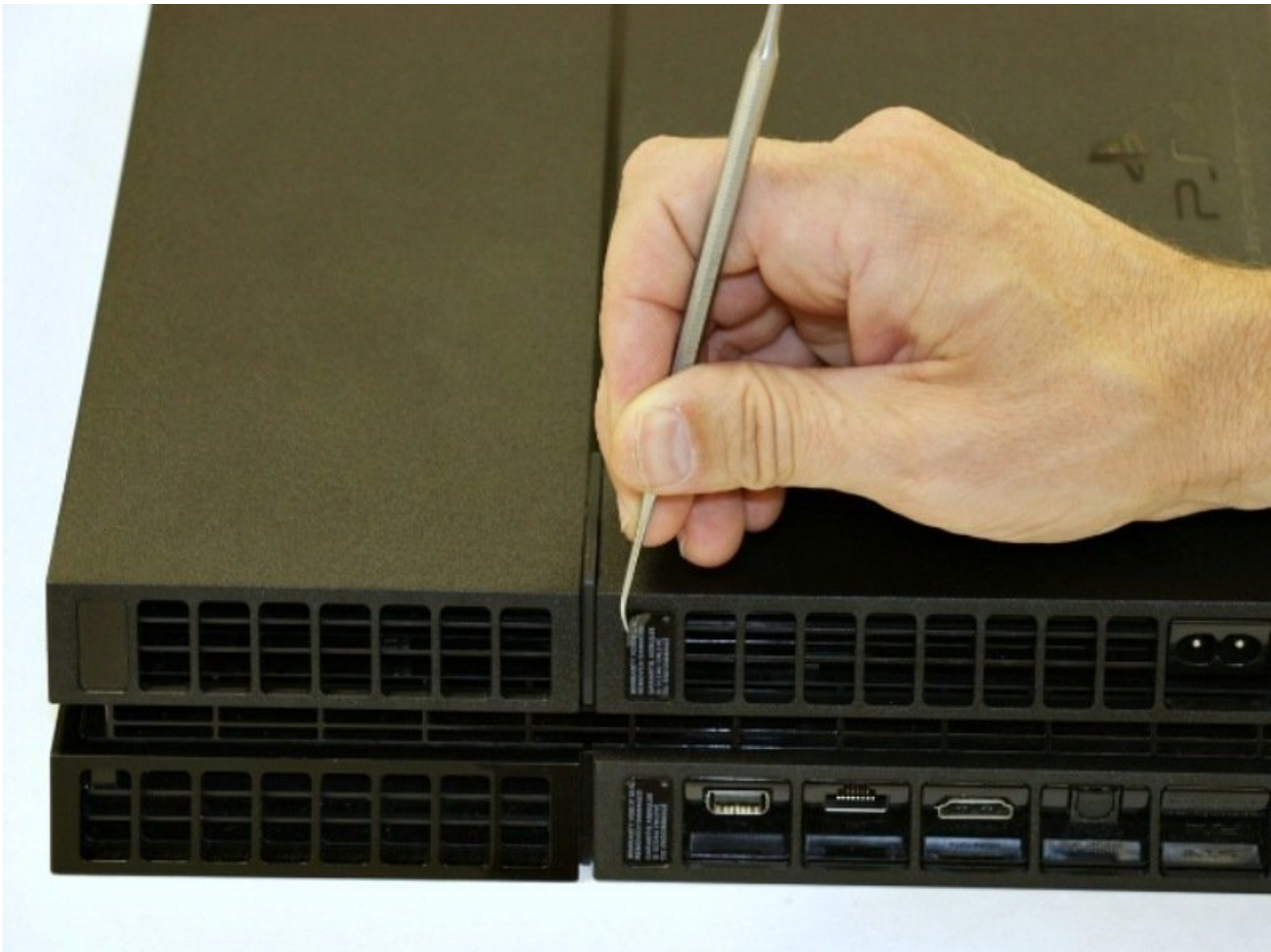




PlayStation 4 WiFi Antenna Replacement

This guide will help you remove the WiFi antenna from your PS4.

Written By: TronicsFix



INTRODUCTION

If your controllers no longer work from long distances you might have a broken WiFi antenna.

Be aware that any replacement or teardown beyond the hard drive voids the Sony warranty.

*You are using this guide at your own risk. TronicsFix take no responsibility and will not be held liable for any damages that may occur while using this guide.



TOOLS:

- [Phillips #1 Screwdriver](#) (1)
- [Metal Probe](#) (1)
- [TR9 Torx Security Screwdriver](#) (1)
- [Tweezers](#) (1)



PARTS:

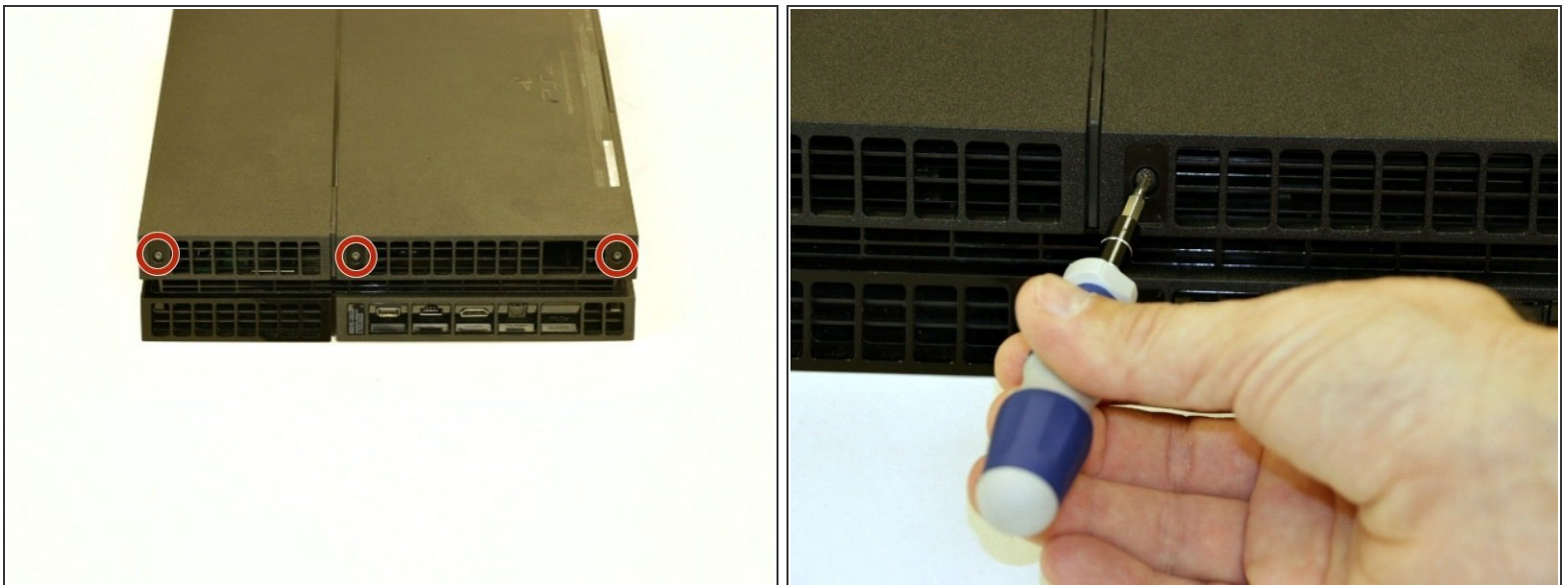
- [PlayStation 4 Wi-Fi Antenna](#) (1)
- [PlayStation 4 \(CUH-12XXA\) Wi-Fi Antenna](#) (1)
- [PlayStation 4 Console Screw Set](#) (1)

Step 1 — Remove Stickers



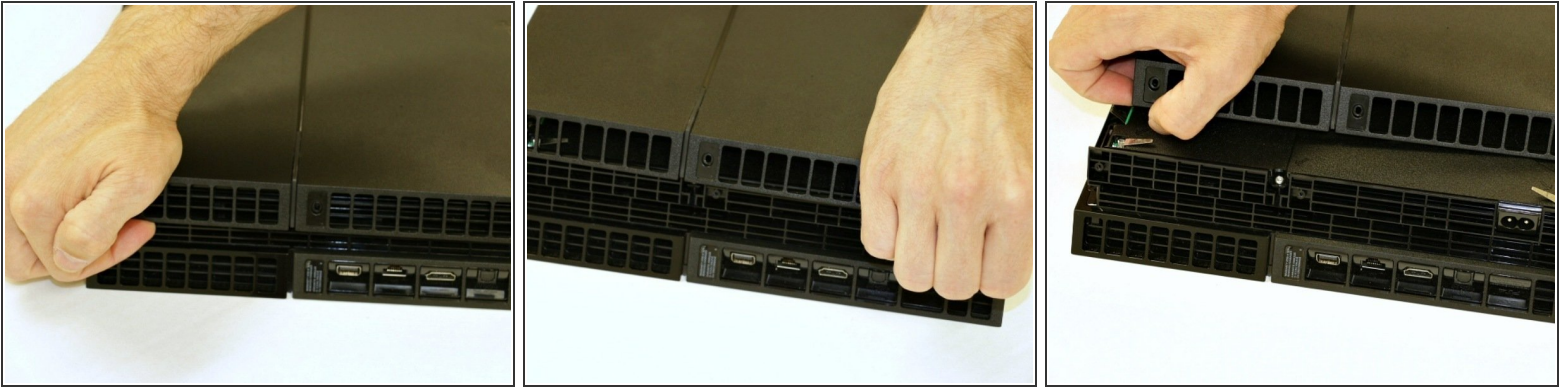
- Using a dental pick or something similar, remove the three stickers on the bottom casing.

Step 2 — Remove Bottom Case Screws



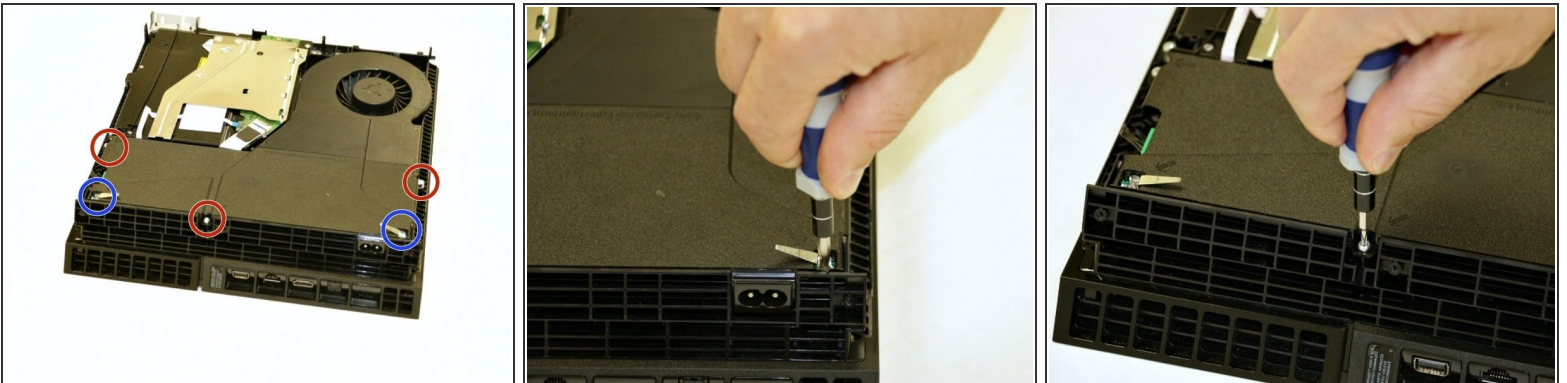
- Remove the three black screws in the bottom case using a T9 security torx bit.

Step 3 — Remove Bottom Case



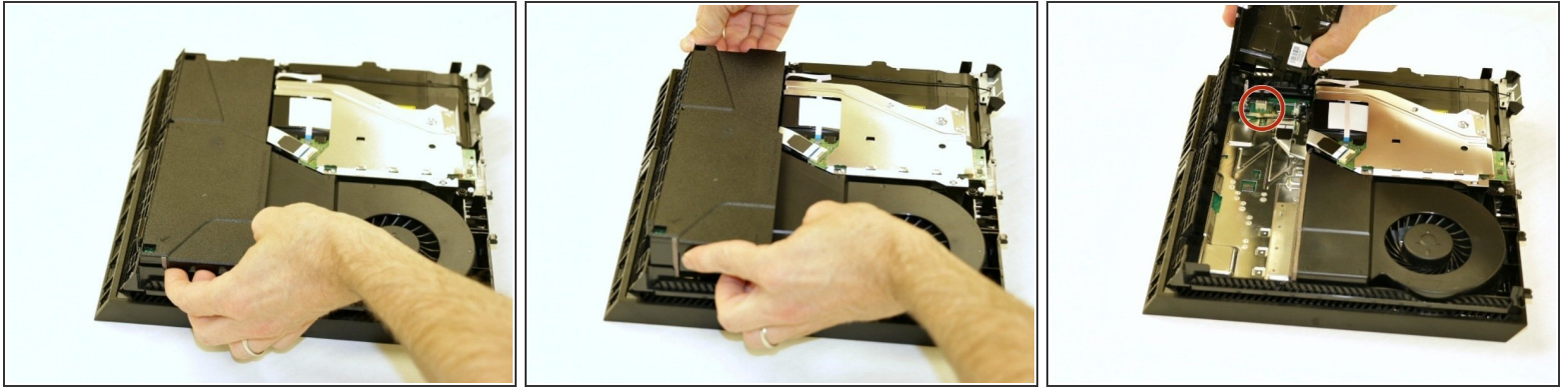
- Pull up on one side of the case, then the other then slide the case back. It will then be free from the rest of the console.

Step 4 — Remove Power Supply Screws



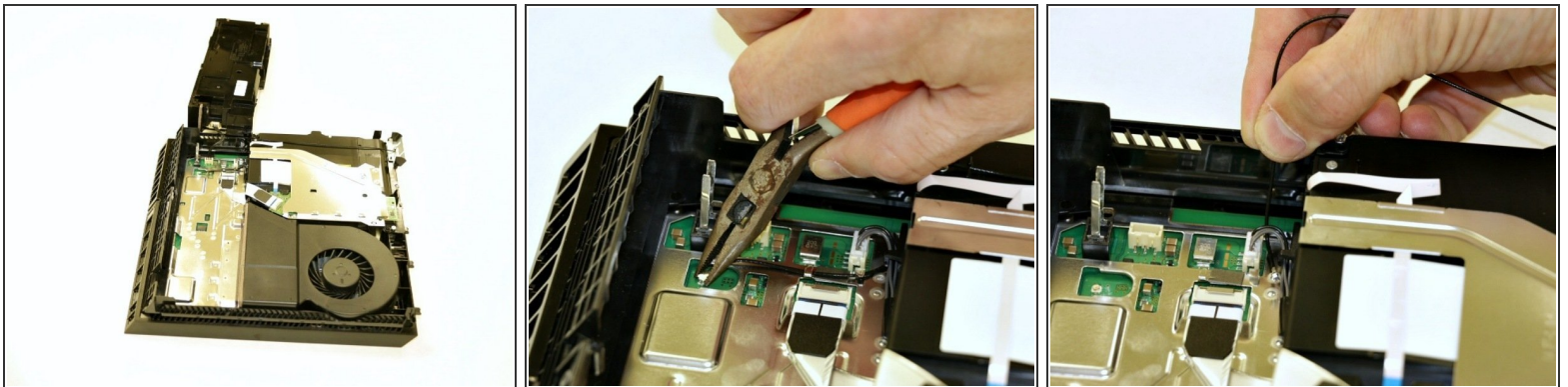
- Remove the five screws that secure the power supply. There are two PH1 and three T9 torx security screws.

Step 5 — Remove Power Supply



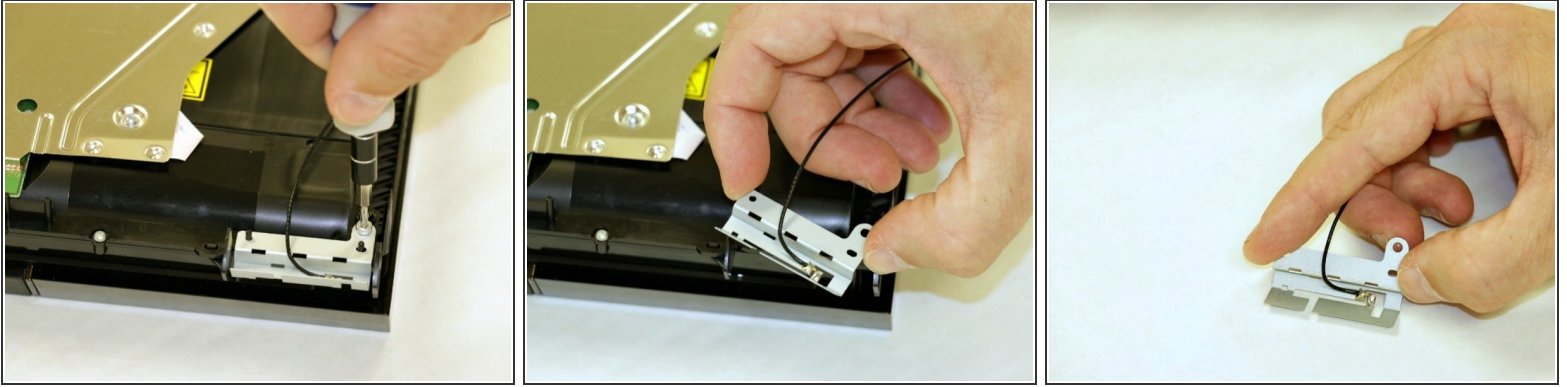
- First pull up on one side of the power supply, then pull up on the other side. Gently but firmly wiggle it out.
- Be careful as you pull up on the power supply as it is still connected with a connector from the motherboard.

Step 6 — Disconnect WiFi Antenna



- The power supply can be lifted out and rotated down and set on the workbench.
 - Be very careful not to pull on the power supply as it will still be connected to the motherboard.
- Use ESD-safe tweezers to carefully disconnect the wi-fi antenna by pulling it straight up.
 - Be careful not to apply too much force on the WiFi connector as it can break off.
- After the WiFi cable is disconnected, de-route the cable from the two clips and under the optical drive cable.

Step 7 — Remove WiFi Screw & WiFi Antenna



- Remove the one torx T9 security screw from the WiFi antenna located at the front of the console.
- The WiFi Antenna can now be fully removed from the PS4.

To reassemble your device, follow these instructions in reverse order.

Be sure to route the WiFi antenna cable the same way as it was routed before disassembly. Then take a break and have some ice cream!