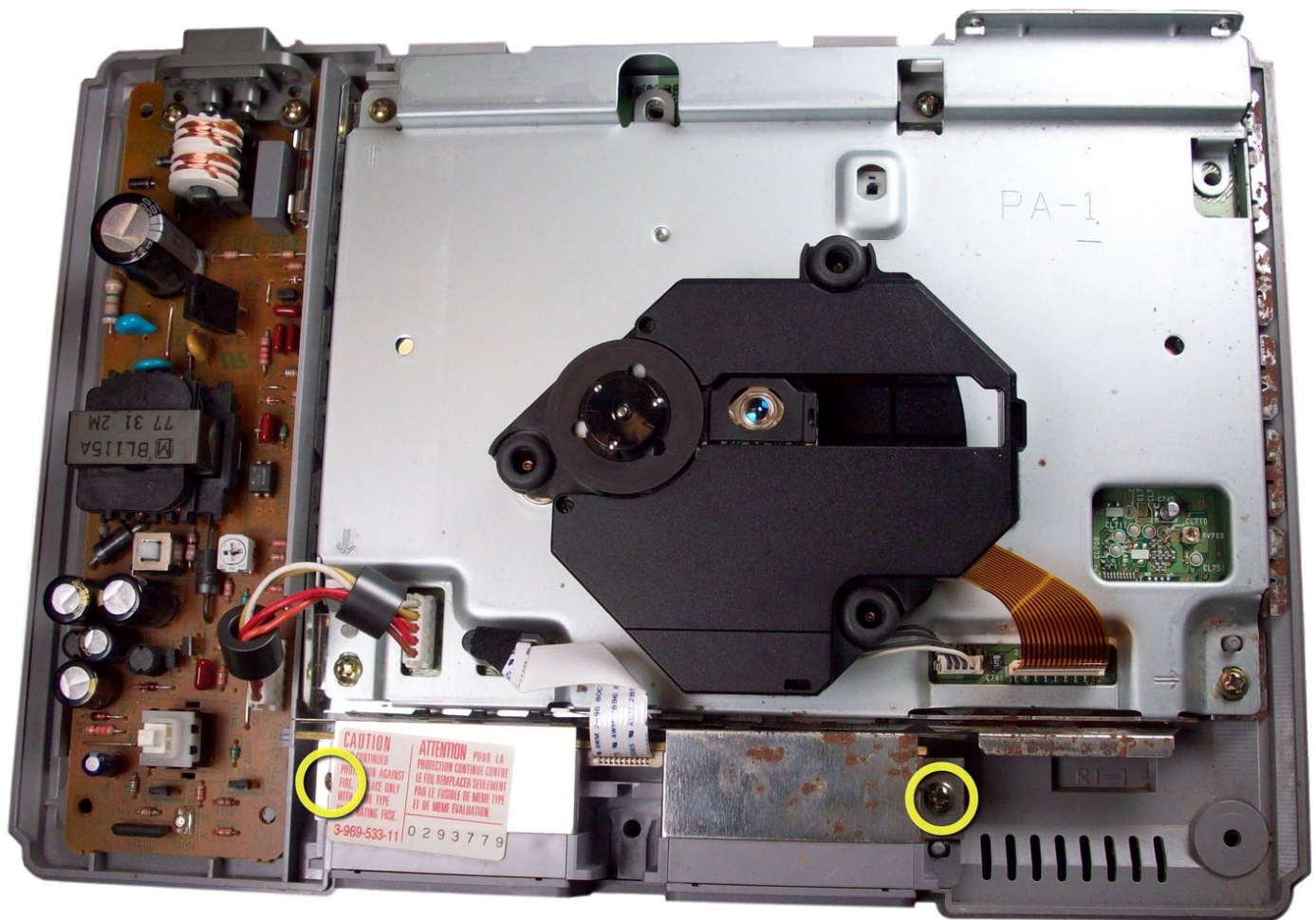




PlayStation Controller Port Replacement

Written By: JakeDeschamps



INTRODUCTION

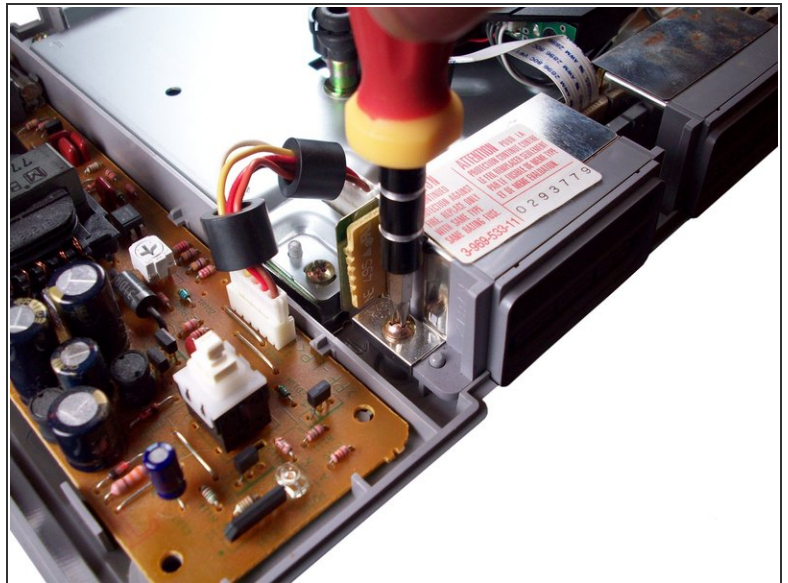
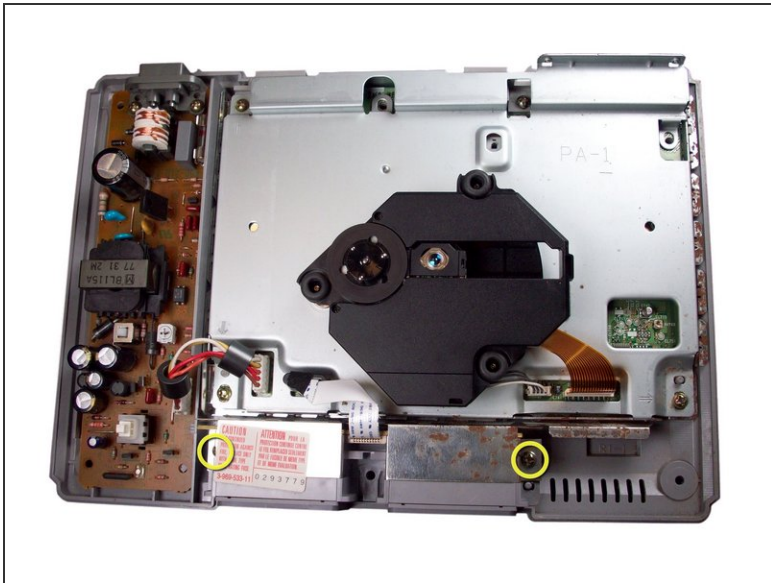
This will guide you through the replacement of your controller port.



TOOLS:

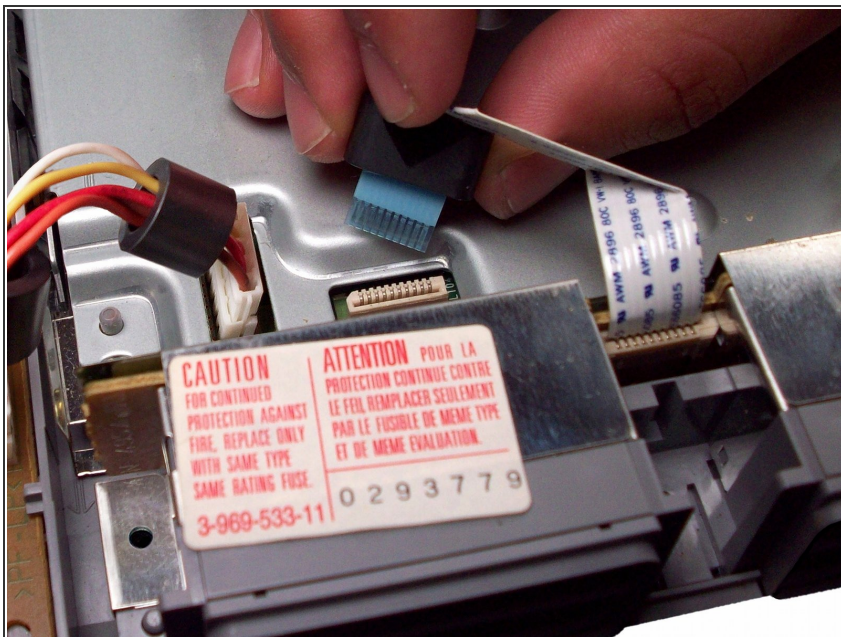
- [Phillips #1 Screwdriver](#) (1)
-

Step 1 — Controller Port



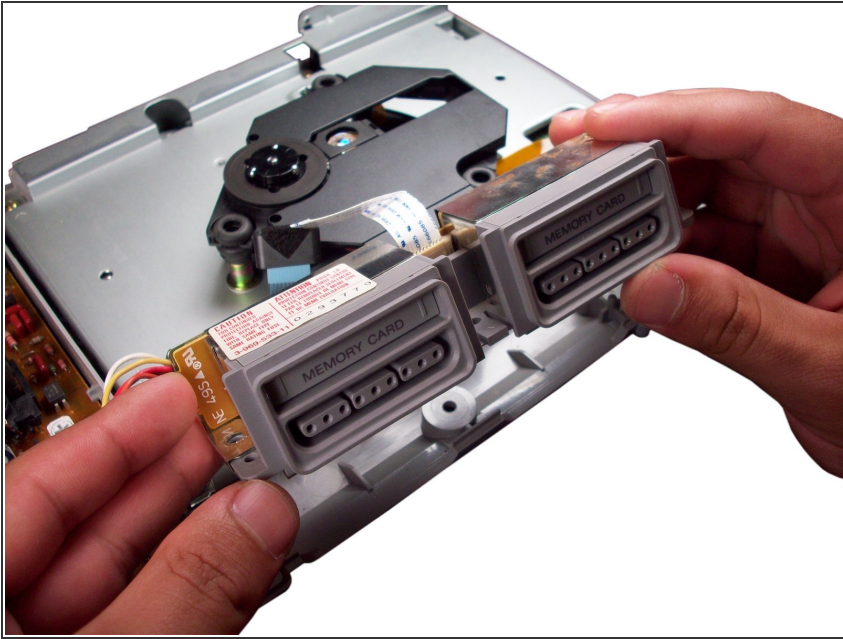
- Remove the two screws securing the controller port to the case.

Step 2



- Gently disconnect the ribbon cable from the logic board. This is done by pulling on the blue area of the cable near the connector.

Step 3



- Remove and replace the controller port.

To reassemble your device, follow these instructions in reverse order.