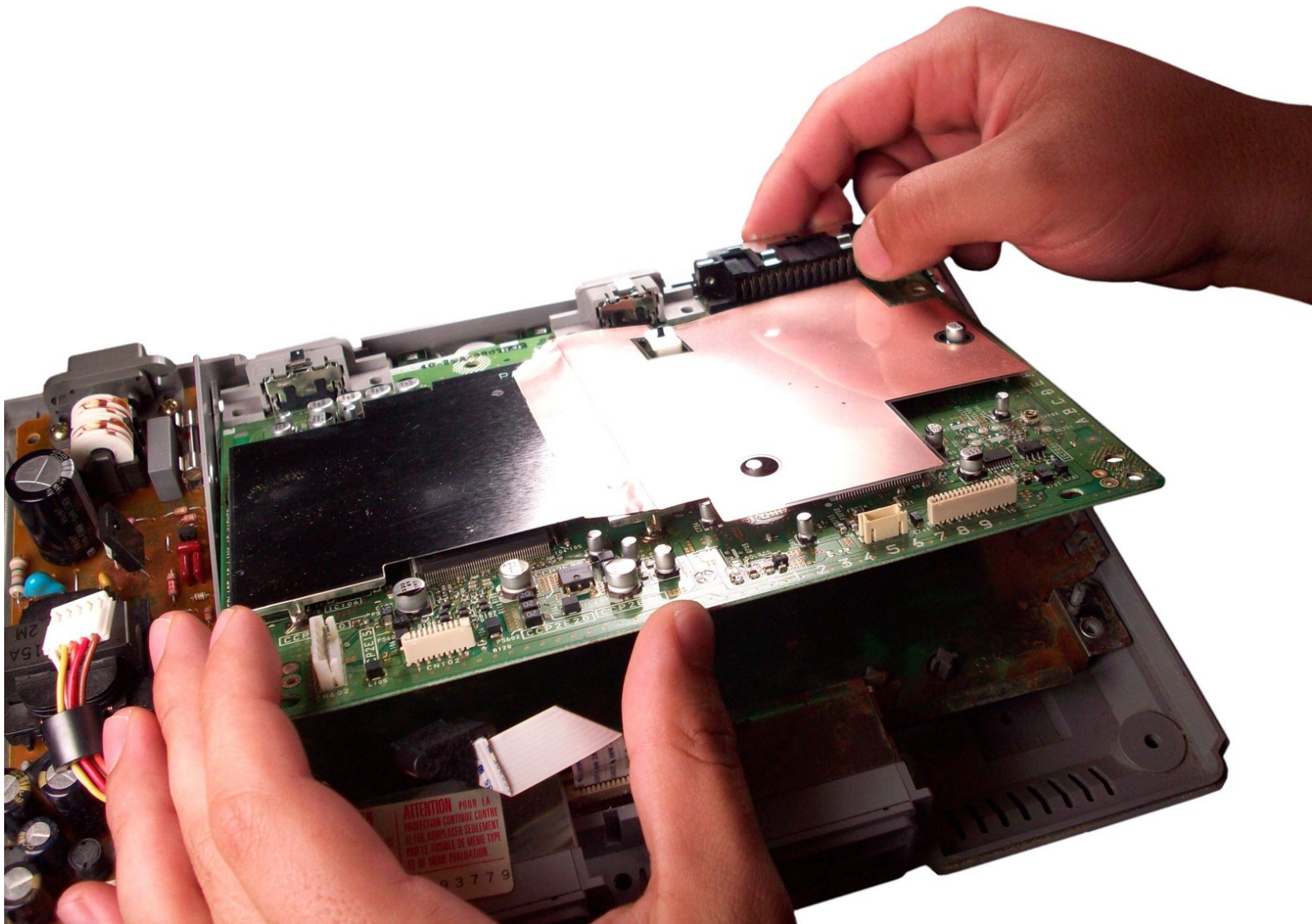




PlayStation Logic Board Replacement

Written By: JakeDeschamps



INTRODUCTION

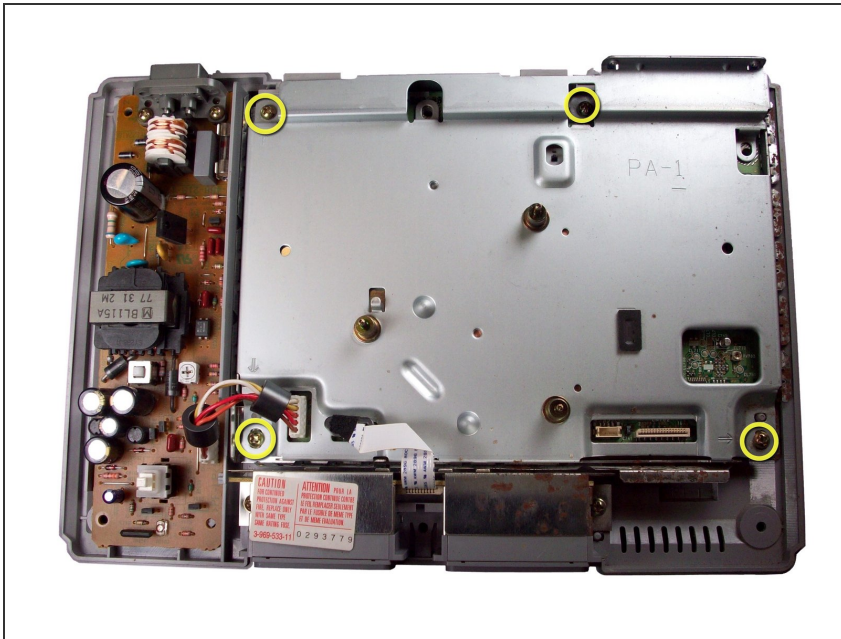
This will guide you through the process of replacing your logic board.



TOOLS:

- [Phillips #1 Screwdriver](#) (1)
 - [Spudger](#) (1)
-

Step 1 — Logic Board



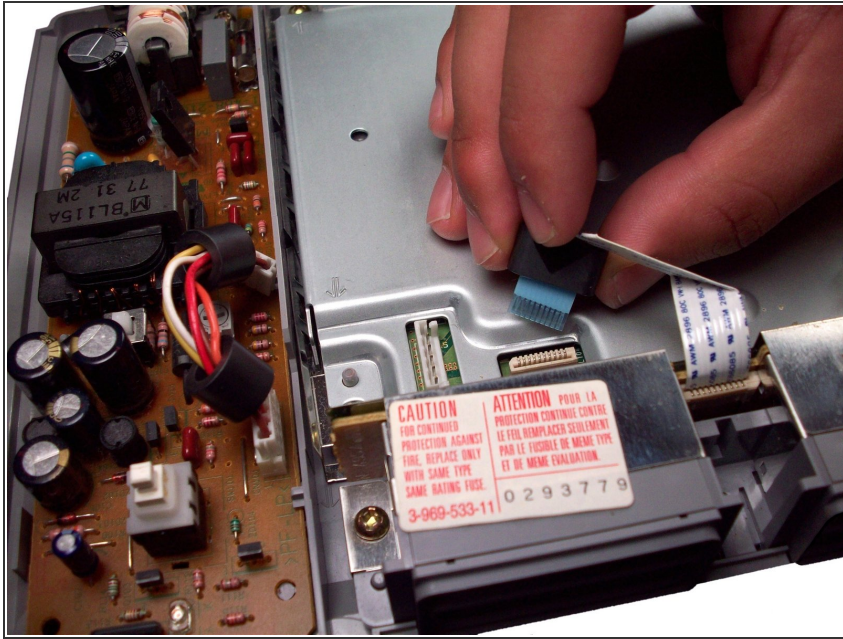
- Remove the four screws from the logic board's metal cover.

Step 2



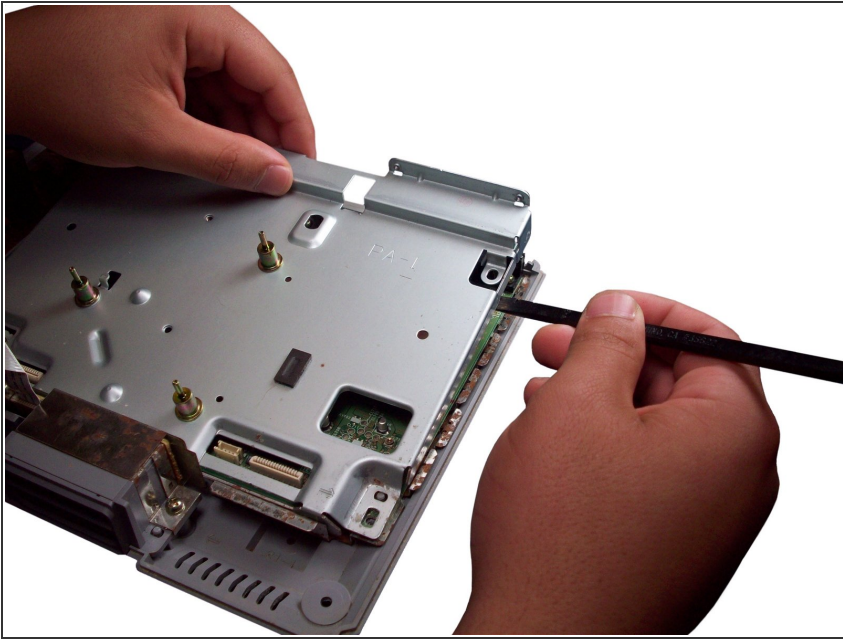
- Detach power supply connector from logic board by pulling on the plastic tab.

Step 3



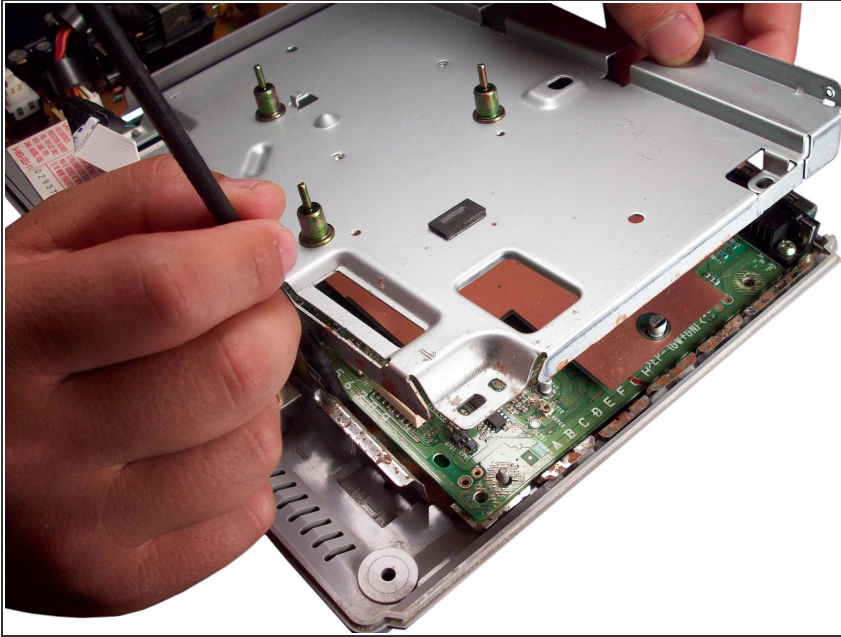
- Detach white ribbon cable from logic board by gently lifting on it.

Step 4



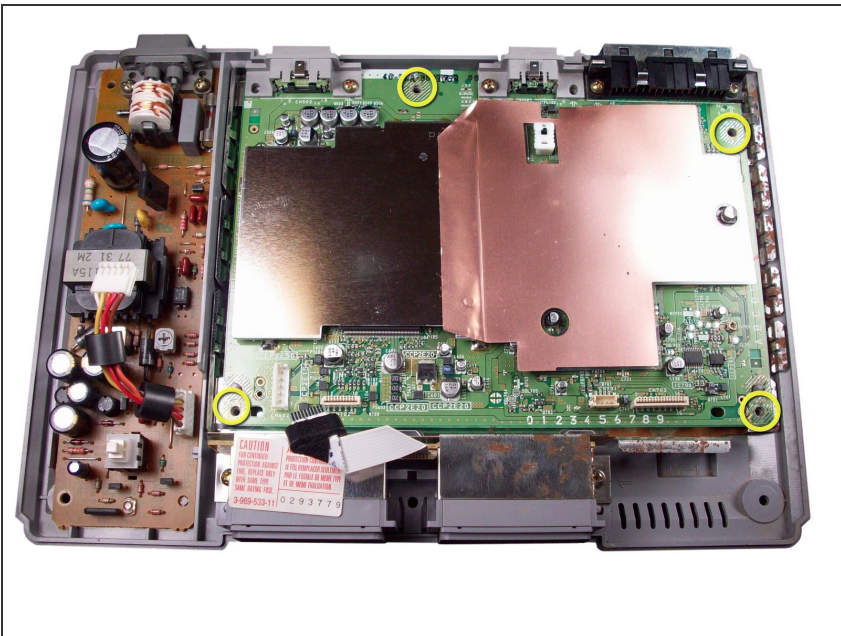
- With one hand, hold the main board's protective metal cover. With your other hand, wedge the spudger in between the right side of the protective cover and the thin metal clamps that surround it.
- With the spudger in place, gently lift the upper portion of the metal cover. The cover should detach from the right side.

Step 5



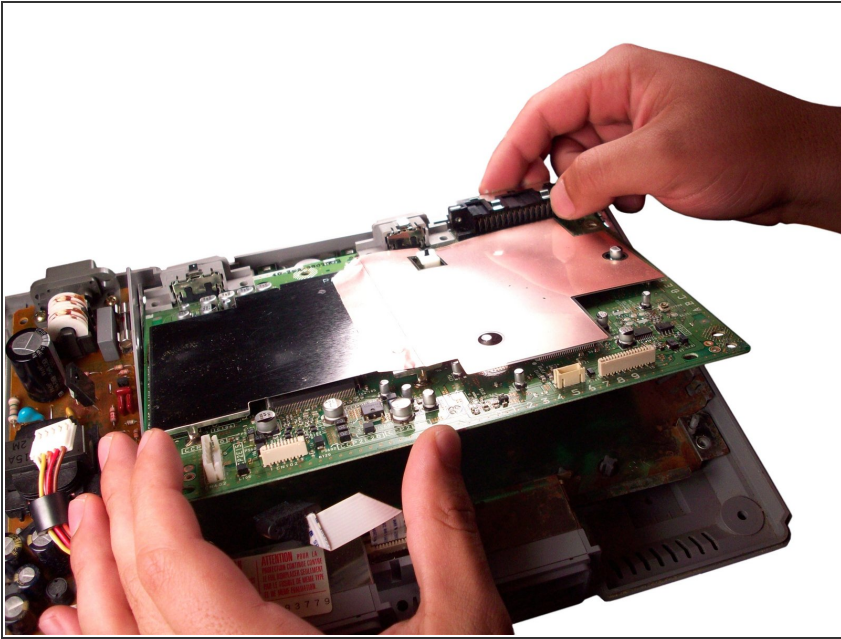
- Using the same process from the previous step, wedge the spudger between the clamps and metal cover on the bottom side (as shown in the picture).
- With your other hand, pull up on the top right corner of the metal cover to lift it off.

Step 6



- Remove the last four screws from the logic board.

Step 7



- Lift the logic board out of the PlayStation and replace with a new logic board.

To reassemble your device, follow these instructions in reverse order.