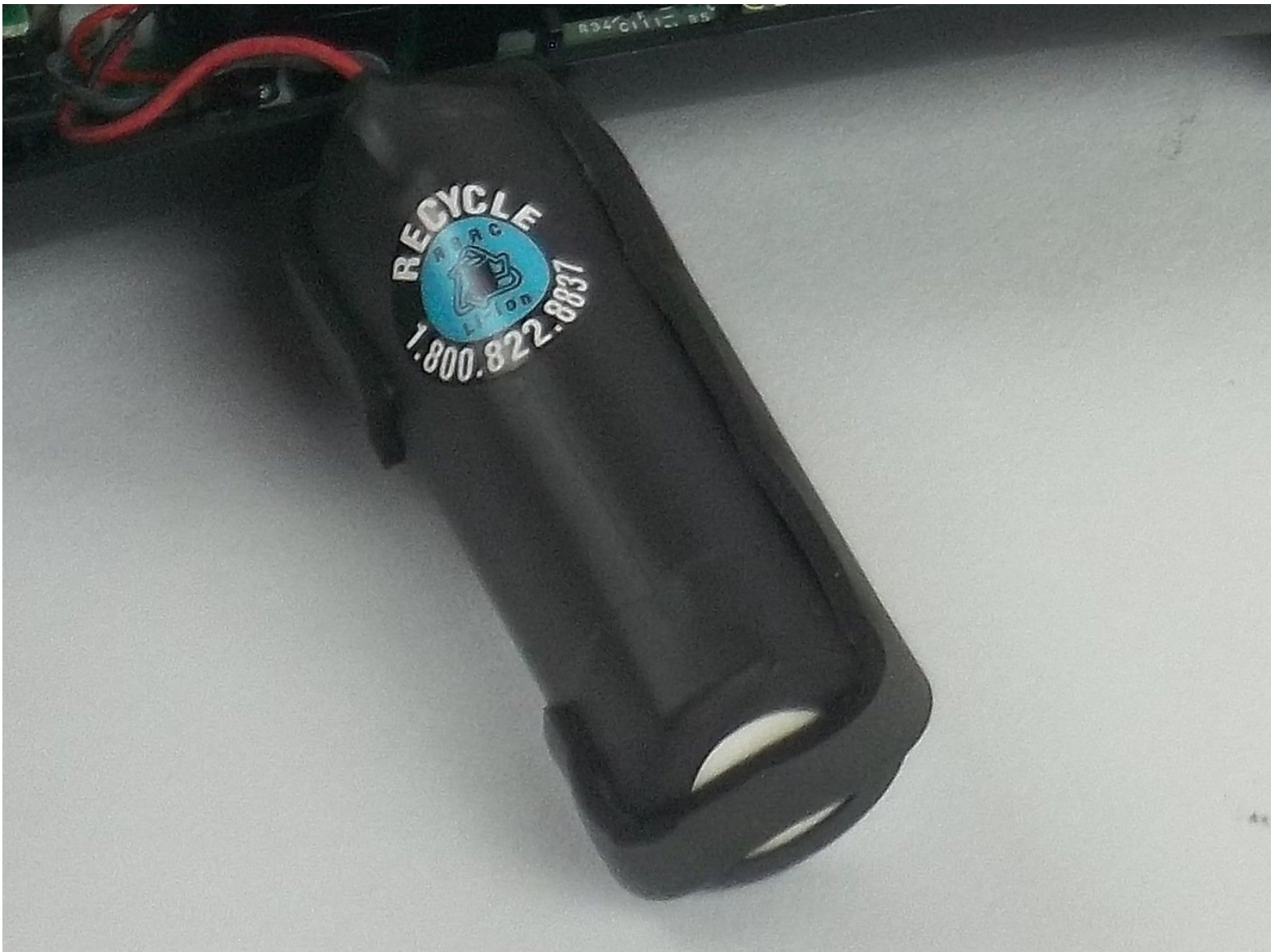




PlayStation Move Battery Replacement

Remove the battery from your Move Controller.

Written By: Jenelle Mohammed



INTRODUCTION

This guide will show the steps to dismantle the move controller and remove the battery in order to have it replaced.



TOOLS:

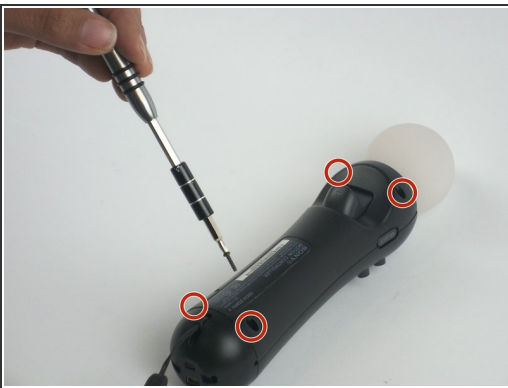
- [Tweezers](#) (1)
 - [iFixit Opening Tools](#) (1)
 - [Phillips #0 Screwdriver](#) (1)
-

Step 1 — Battery



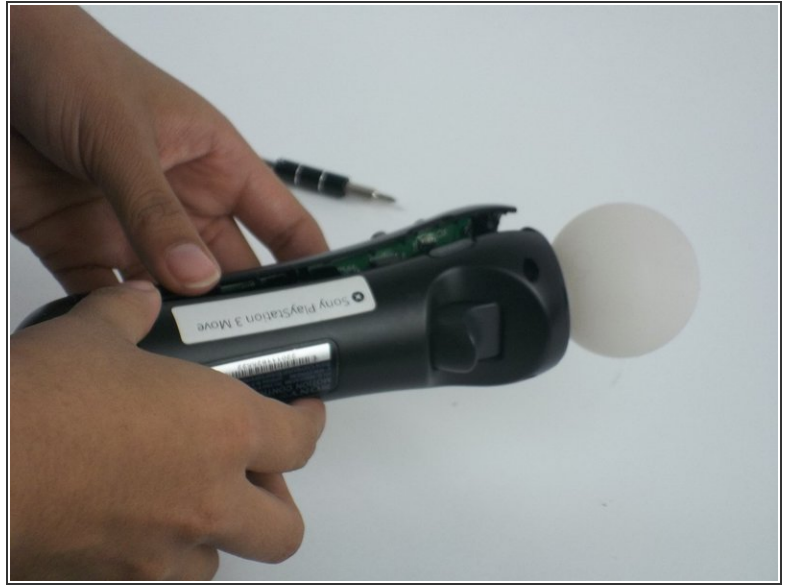
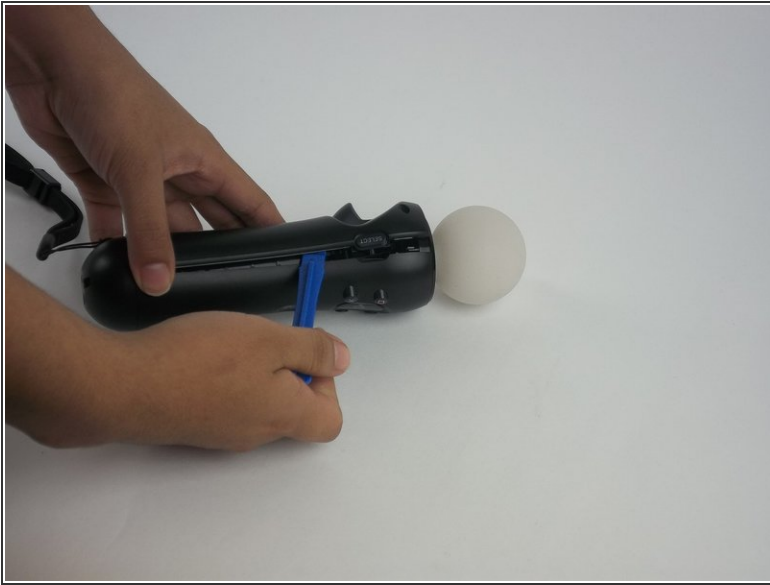
- Using a Phillips #1 screwdriver, remove the four 10mm screws from the corners of the trigger button.

Step 2



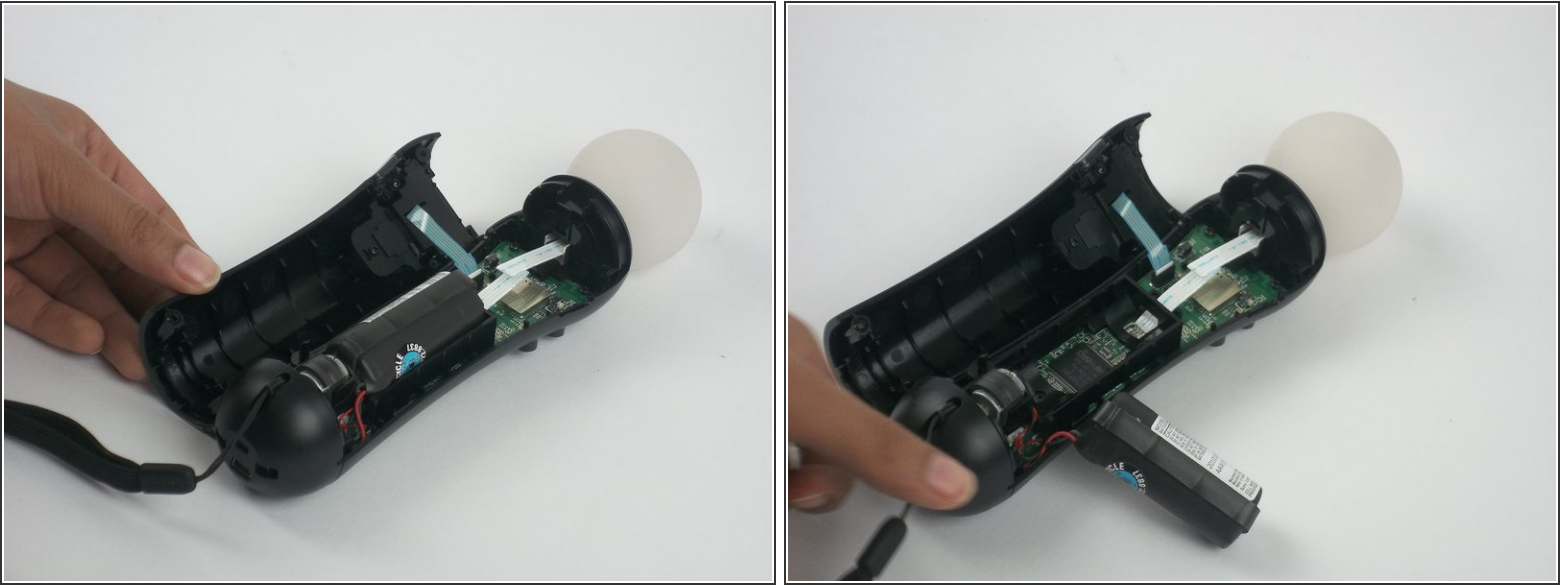
- Using a Phillips #0 screwdriver, remove the four 10mm screws located at the back of the device.

Step 3



- Insert the plastic opening tool at the indent along the front and back surfaces of the controller.
- Gently use a forward and backward motion to safely pop open the cover.
- Use your hands to further pull it apart and pop it open.

Step 4



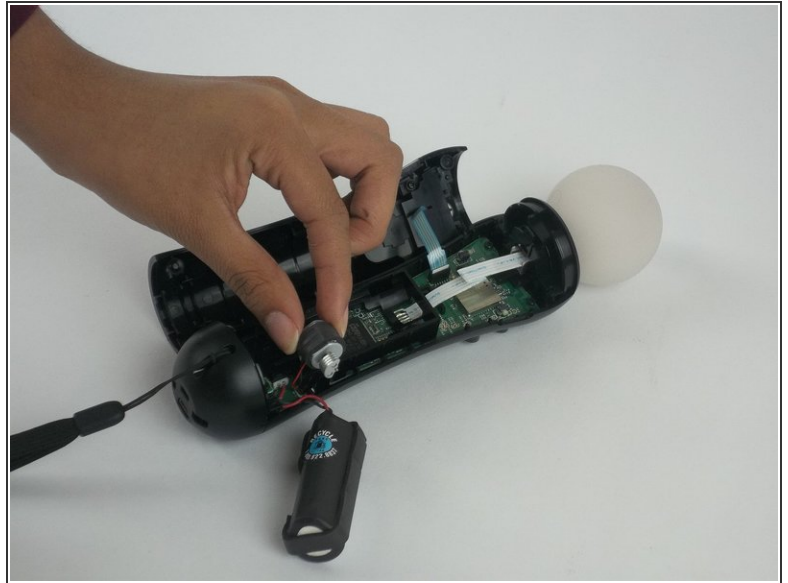
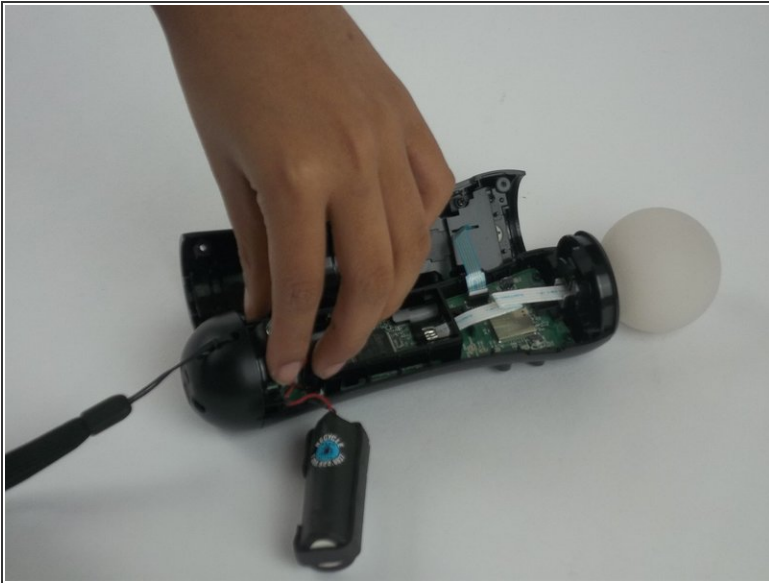
- Once the device is opened, lift the battery out of the black plastic holder.
- ⚠ Carefully pull the battery out and ensure that it's wires are still connected to the inside.

Step 5



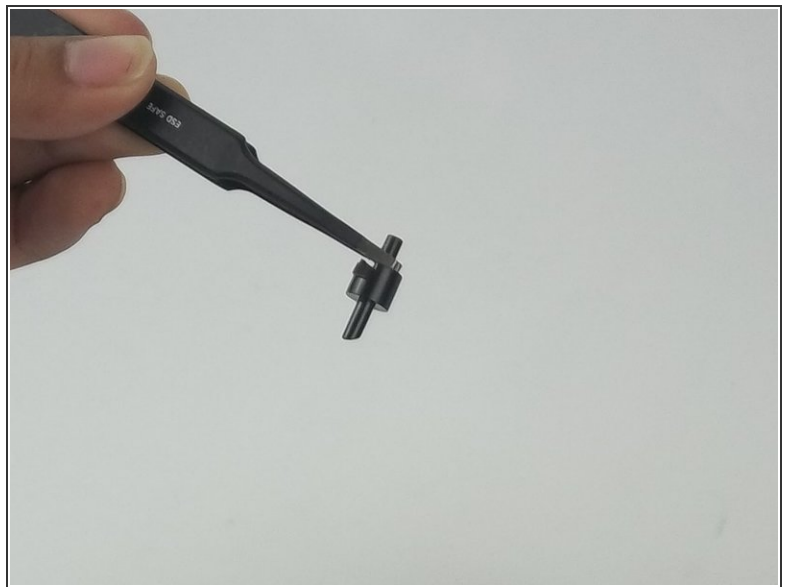
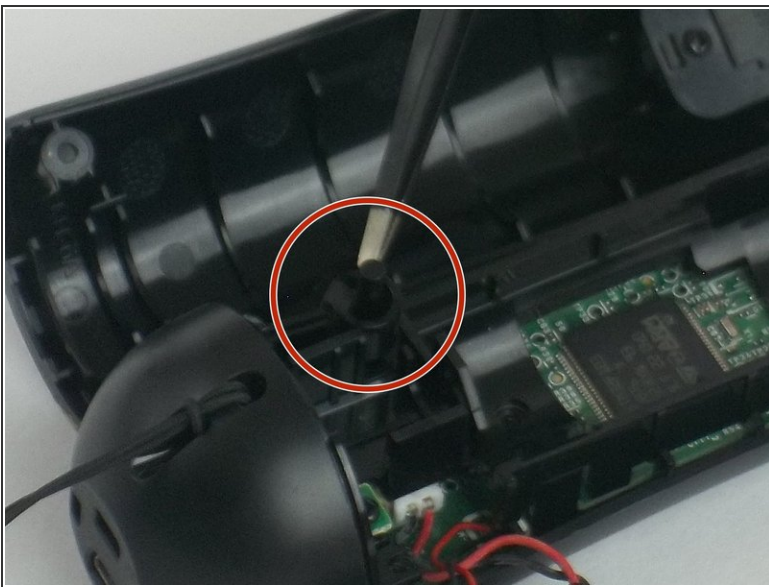
- Using a Phillips head screwdriver, remove the 9mm screw located to the right of the battery, which is connected to the inner plastic frame.
- Use the plastic opening tool to carefully take out the grey cylindrical piece (vibrator) that is also attached to a wire.

Step 6



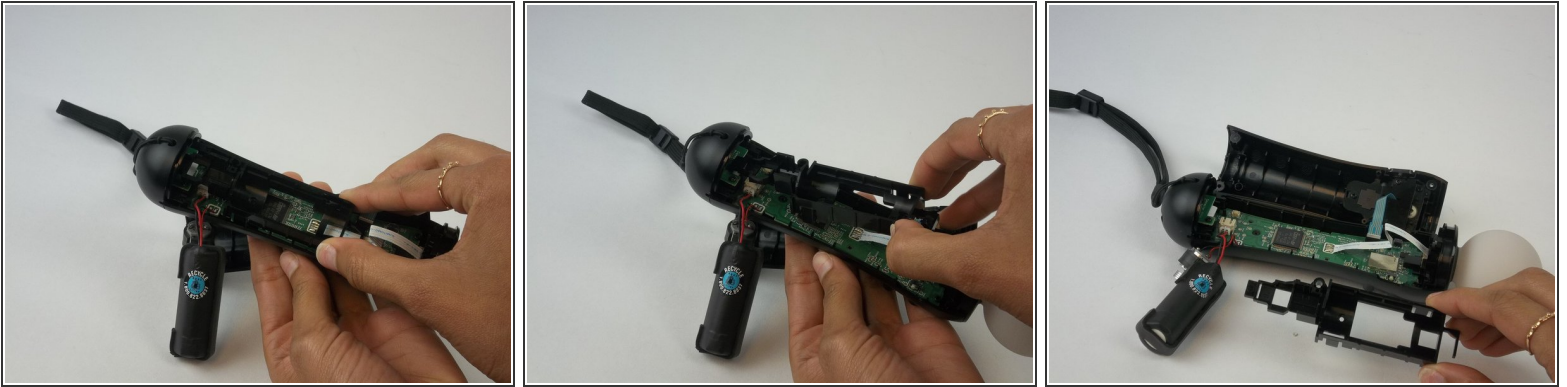
- Gently pull out the small cylindrical grey piece (vibrator).
- ⓘ Removing this piece makes it easier to access the wire connection of the battery and remove it.

Step 7



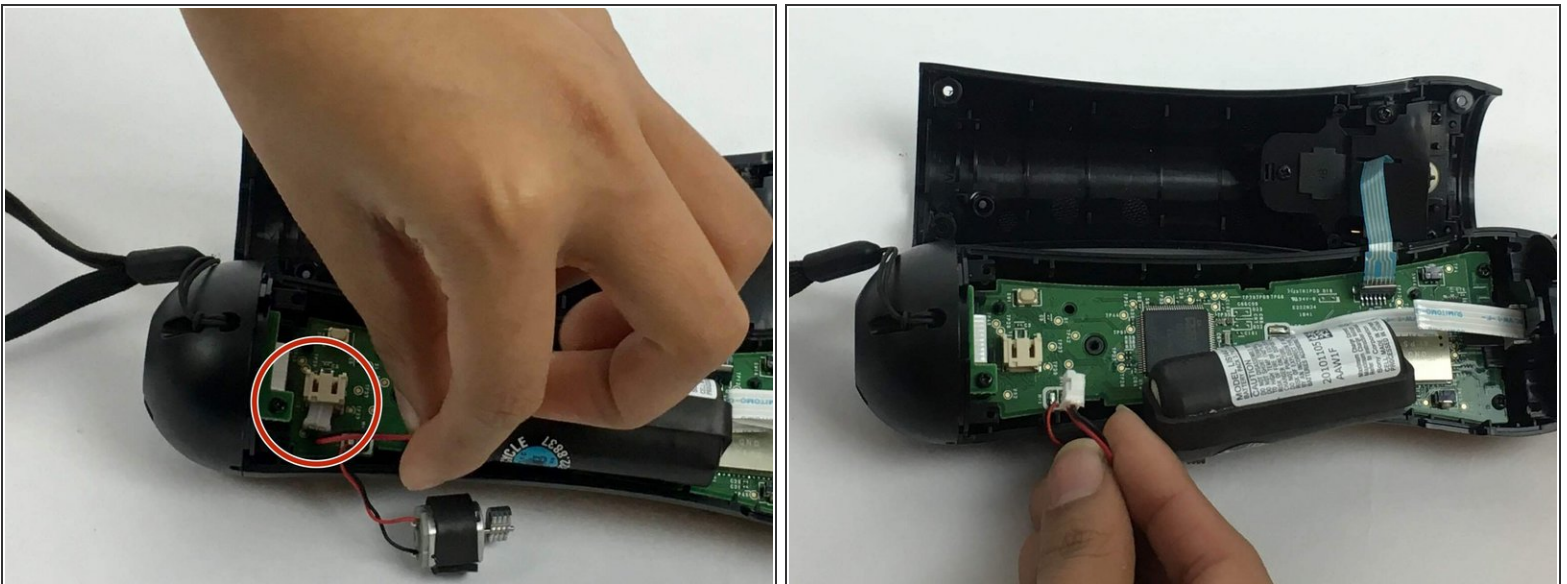
- Use tweezers to remove the small piece with a cylindrical top that is located to the left of the inner plastic frame.

Step 8



- Use one hand to hold the bottom of the device, and the other hand to squeeze the inner plastic frame.
 - While squeezing the inner plastic frame, pull it up and then pull it towards you to detach it.
- ⚠ While removing the frame, be extremely careful because it could damage the frame or the motherboard.

Step 9



- Gently pull on the end of the red and black wires which is closest to the connector to disconnect the battery.

To reassemble your device, follow these instructions in reverse order.