



# PlayStation Move Case Replacement

This is a prerequisite guide that will show you how to disassemble the PlayStation Move controller.

Written By: Sarah Shand



# INTRODUCTION

This is a prerequisite guide that will show you how to disassemble the PlayStation Move controller.



## TOOLS:

- [Phillips #00 Screwdriver](#) (1)
  - [iFixit Opening Tools](#) (1)
-

## Step 1 — Case



- Turn the controller over and unscrew the four 10mm screws with a PH #00 screwdriver.

## Step 2



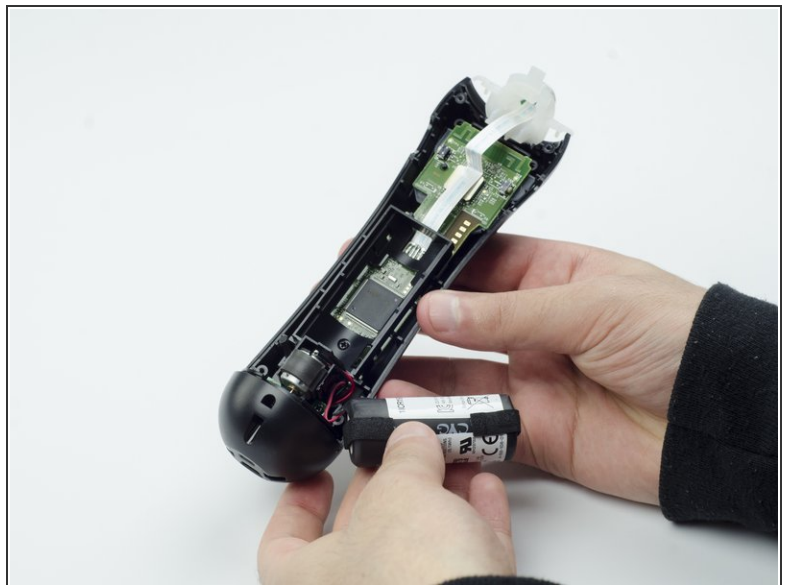
- Pinch the sides of the back panel to remove it and set it aside.

### Step 3



- Hold the base of the controller with one hand and with the other carefully pull up on the white spherical piece to remove it.

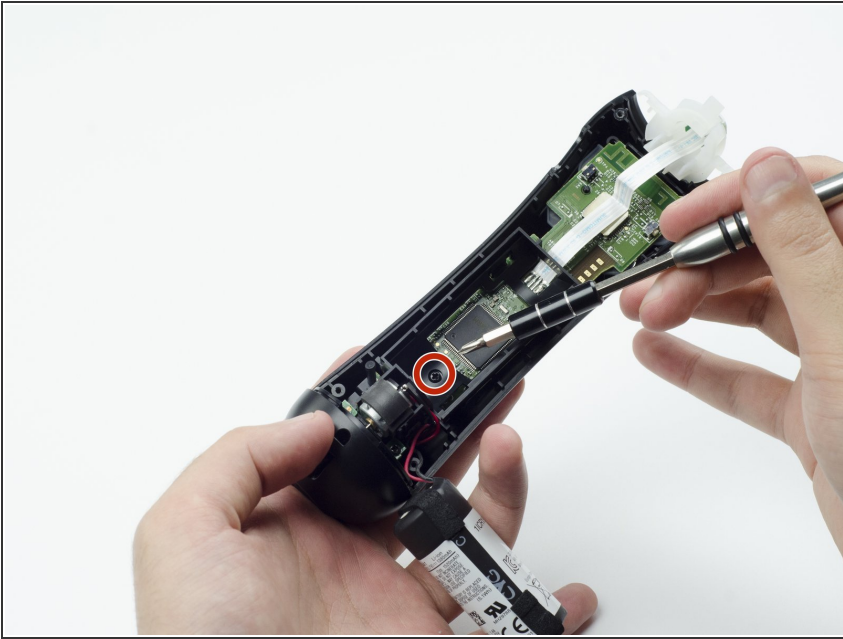
### Step 4



- Push the Lithium Ion battery from its slot to remove it.
- ⓘ Be mindful not to damage the wires or wired components, as the battery will still be attached via its connector.



## Step 5



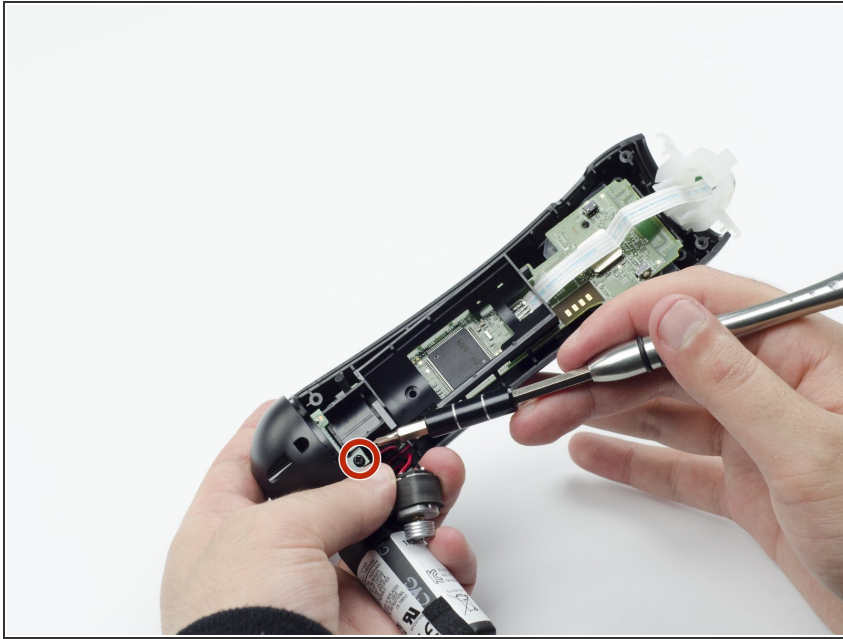
- Unscrew the 9mm screw in the battery slot with a PH #00 screwdriver.

## Step 6



- Using a plastic opening tool, carefully pry the rumble motor free.

## Step 7



- Unscrew the 9mm screw behind the rumble motor slot with a PH #00 screwdriver.

## Step 8



- Carefully pinch the plastic sides of the battery slot and lift it (along with the circuit board) from the plastic shell of the move controller.

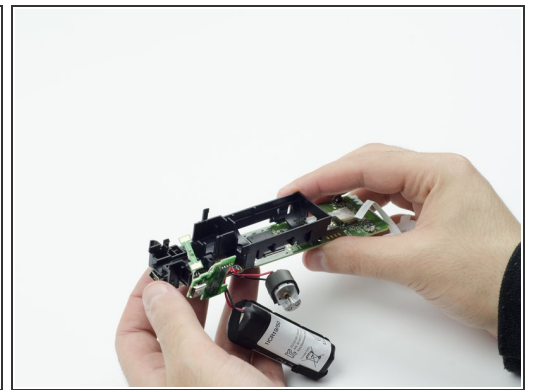
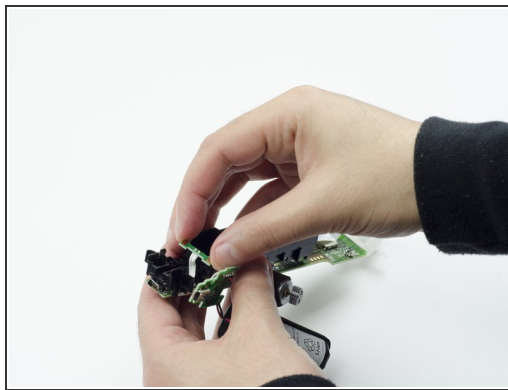
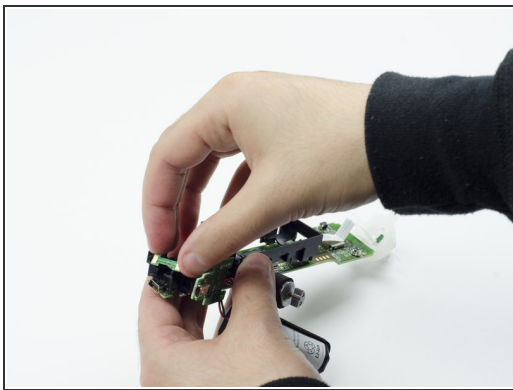
## Step 9



- Using your fingers, carefully pry the square green piece beneath the battery slot free.

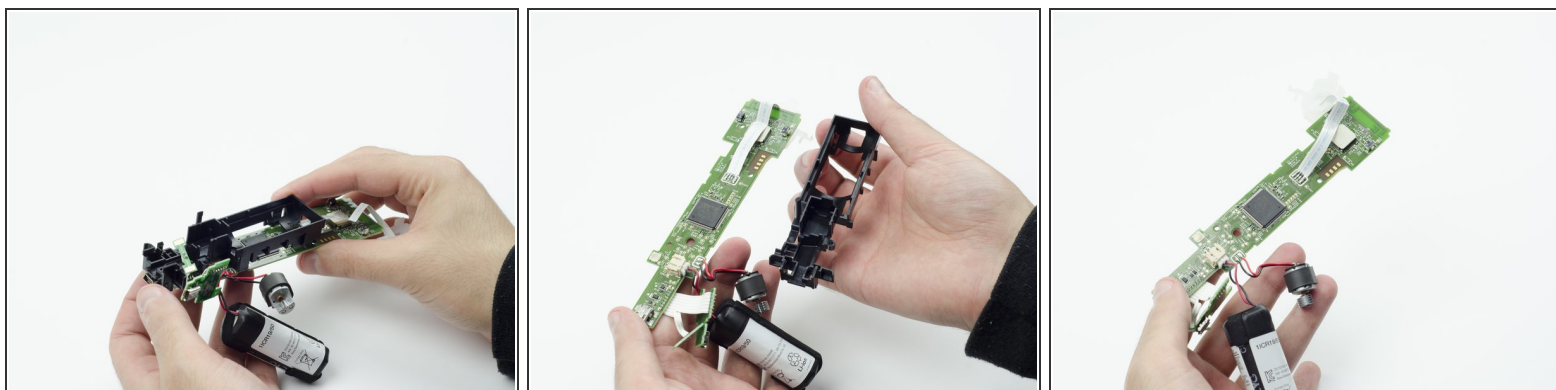
**i** It is attached via white ribbons which need to be kept intact.

## Step 10



- Follow the white ribbon attached to the part you just removed to a smaller, more rectangular piece.
- Lift the rectangular piece from its slot to free it.

## Step 11



- Carefully lift the entire circuit board from the black plastic encasing it.
- ⓘ Take extra care not to damage any of the wired components.

To reassemble your device, follow these instructions in reverse order.